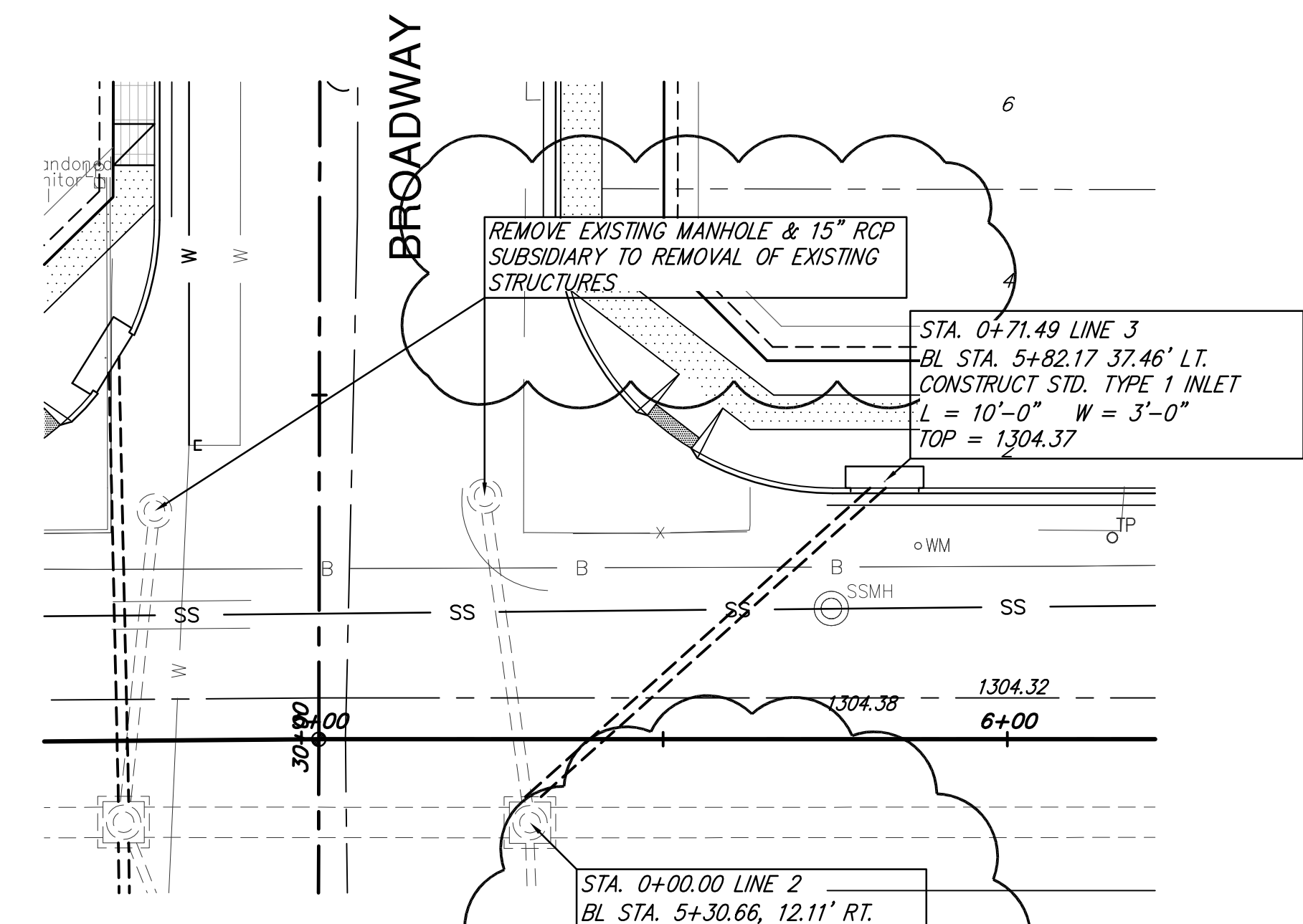
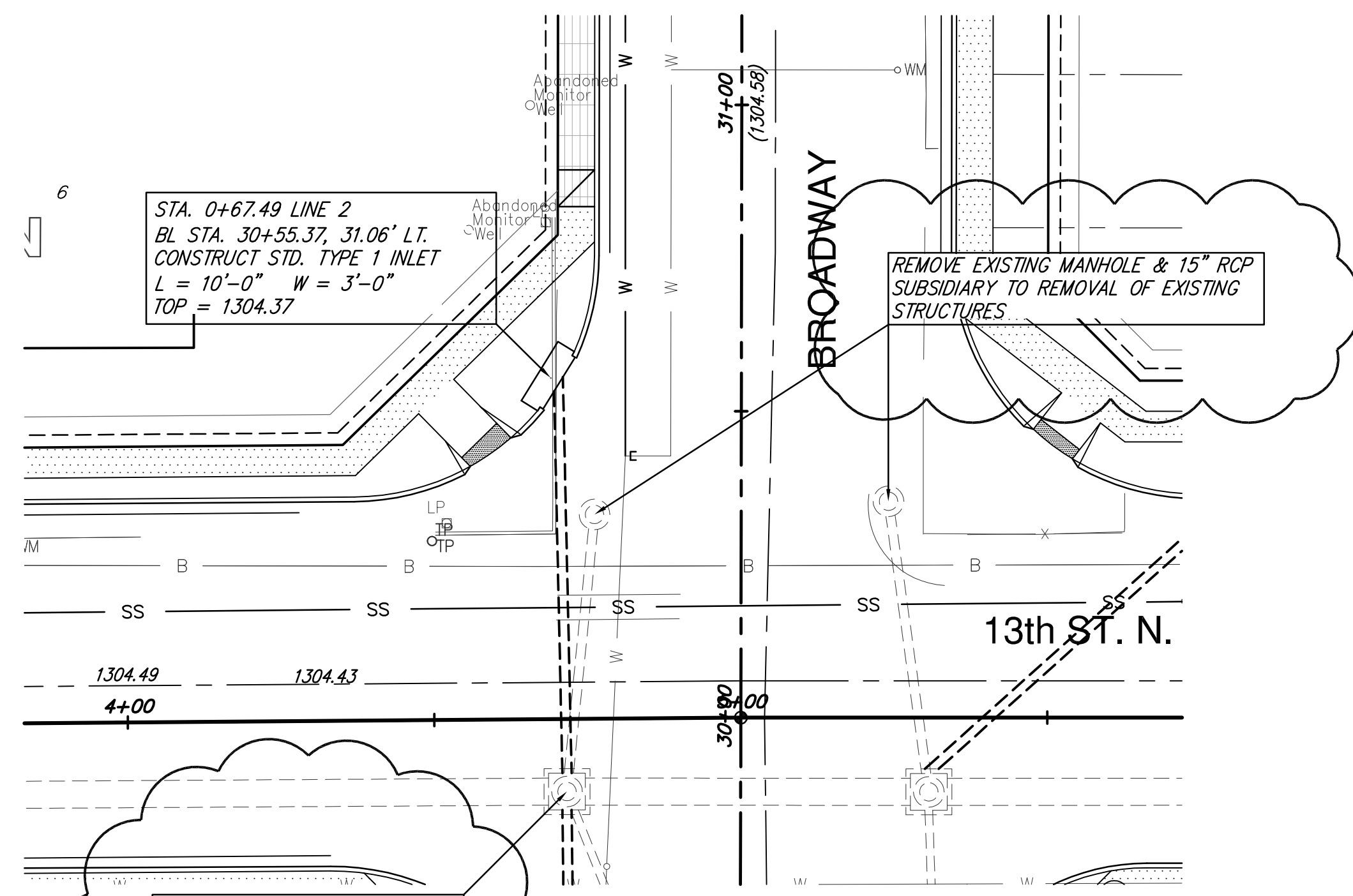


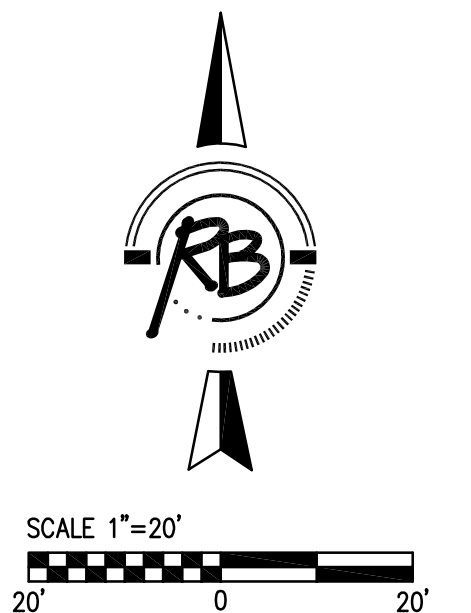
FHWA REGION NO.	STATE	PROJECT NUMBER	FISCAL YEAR	SHEET NUMBER	TOTAL SHEETS
7	KANSAS	87N-0245-01	2006	19	55



STA. 0+00.00 LINE 2  
 BL STA. 29+87.88 28.33' LT.  
 INSTALL 68 L.F. SWS  
 PIPE RCP 18". CONNECT TO  
 EXISTING STORM WATER SEWER  
 MANHOLE. INSTALL NEW RING &  
 COVER AND ADJUST MH TOP  
 EXISTING RIM ELEV = 1303.67  
 PROPOSED RIM ELEV = 1303.96

STA. 0+00.00 LINE 2  
 BL STA. 5+30.66, 12.11' RT.  
 INSTALL 72 L.F. SWS PIPE RCP  
 18". CONNECT TO EXISTING  
 STORM WATER SEWER MANHOLE.  
 INSTALL NEW RING & COVER  
 AND ADJUST MANHOLE TOP  
 EXISTING RIM ELEV = 1303.85  
 PROPOSED RIM ELEV = 1303.95

ALL UTILITY LINES EXPOSED DURING CONSTRUCTION  
 SHALL BE SUPPORTED WHILE EXPOSED. METHOD TO  
 BE APPROVED BY FIELD ENGINEER.



Note : Permanent pavement will be installed with Street Project.

REVISED:  
12/14/07

**Kriegels & Bohm, P.A.**  
 Engineering, Surveying, Land Planning  
 524 North Main  
 Wichita, Kansas 67203  
 Phone: 316.268.0008  
 Fax: 316.268.0009  
 Email: info@kriegels.com

STATION	LINE 2	LINE 3
1295		
1300		
1305		
1310		
0+00	STA. 0+00.00 LINE 2 BL STA. 29+87.88, 28.33' LT. CONNECT TO EXISTING SWS MANHOLE  STA. 0+30.03 PROPOSED 8" SEWER FL ELEV=1299.67  STA. 0+67.49 LINE 2 BL STA. 30+55.37, 31.06' LT. CONSTRUCT STD. TYPE 1 INLET  67.49 18" RCP @ 0.300%	STA. 0+00.00 LINE 3 BL STA. 5+30.66, 12.11' RT. CONNECT TO EXISTING SWS MANHOLE  STA. 0+40.76 PROPOSED 8" SEWER FL ELEV=1299.79  STA. 0+71.49 LINE 3 BL STA. 5+82.17, 37.46' LT. CONSTRUCT STD. TYPE 1 INLET  71.49 18" RCP @ 0.30%
+50		

PROJECT NUMBER: SWS Extensions North  
 DRAWING FILE: SWS Extensions North  
 DESIGN: PDC  
 CHECK: PDC  
 DATE: Sept. 29, 2004  
 REVIEW: REVIEW

Storm Water Sewer - Line 2 & 3  
 13th & Broadway Improvements

19  
 of  
 55