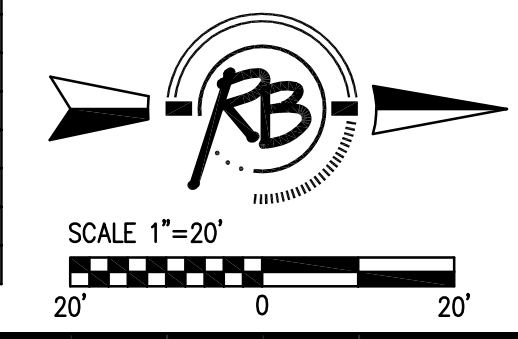


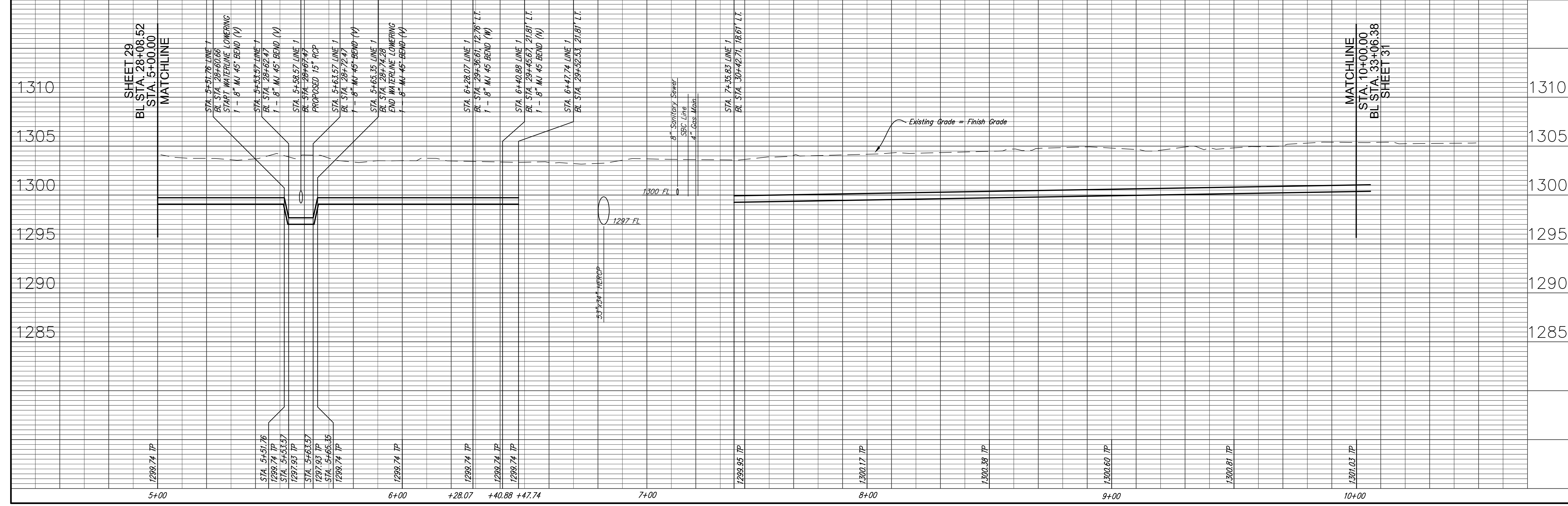
NEW 1" WATER SERVICE AND SET SUMMARY

NO.	BL STATION	LT./RT.	SERVICE (LONG OR SHORT)	ACCOUNT	ADDRESS
10	28+90.02	LT.	SHORT	2666	1343 N. BROADWAY
11	31+05.72	RT.	LONG	ABANDON	DO NOT REPLACE
12	31+27.18	RT.	LONG	ABANDON	DO NOT REPLACE
13	31+51.68	RT.	LONG	ABANDON	DO NOT REPLACE
14	31+66.76	LT.	SHORT	2440	1411 N. BROADWAY
15	32+56.82	LT.	SHORT	5517	1417 N. BROADWAY
16	32+62.75	LT.	SHORT	17322	1416 N. BROADWAY
17	32+82.53	LT.	SHORT	46226	1421 N. BROADWAY



Sta. 23+05 thru 26+95  
 Concrete Base (6 inch)  
 Commercial Asphalt Surface (2 inch)

Remove pavement, construct temporary pavement in overlay area.  
 Note: Permanent pavement will be installed with Street Project.



REVISED: 10/08/07

Ruggles & Bohm, P.A.  
 Engineering, Surveying, Land Planning  
 1000 North Main Street  
 Wichita, Kansas 67202  
 www.ruggles.com  
 Phone: 316.264.4000  
 Email: info@ruggles.com

PROJECT NUMBER: 448-89345  
 DRAWING FILE: water cover Water P&P 2

DESIGN POC: [ ]  
 DRAWN POC: [ ]  
 UTILITY DATE: Sept. 15, 2004  
 REVIEW DATE: [ ]

8" Water Main Replacement  
 WICHITA, KANSAS

RB JOB SHEET: 1219W  
 OF 30  
 55