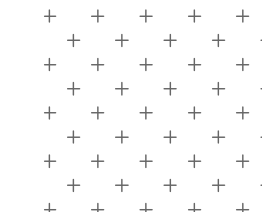
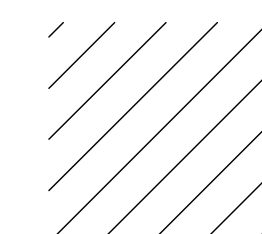
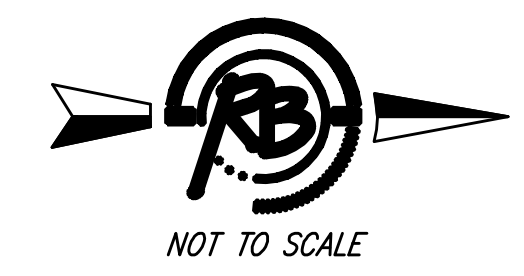
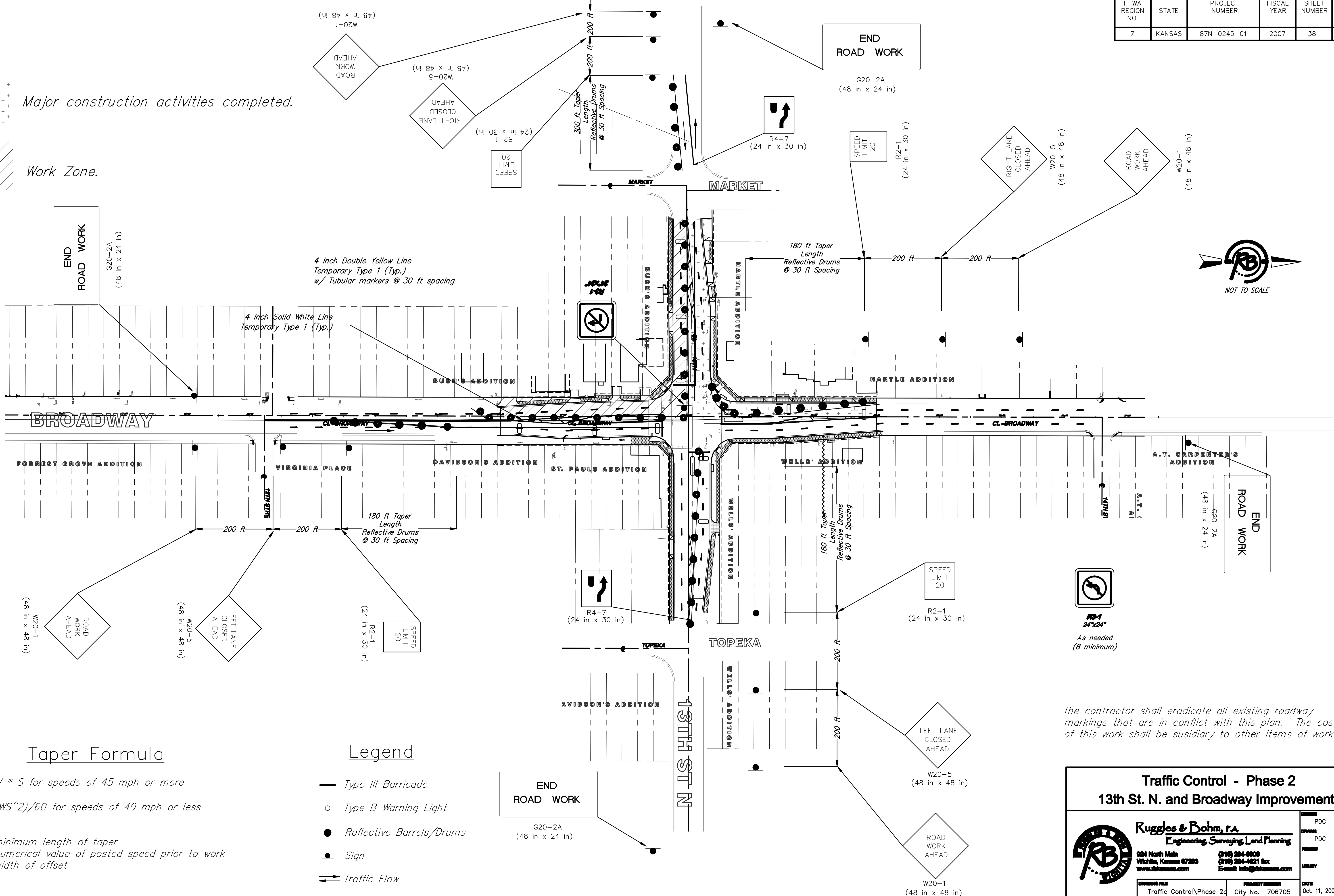


FHWA REGION NO.	STATE	PROJECT NUMBER	FISCAL YEAR	SHEET NUMBER	TOTAL SHEETS
7	KANSAS	87N-0245-01	2007	38	55

 Major construction activities completed.

 Work Zone.




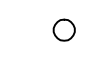


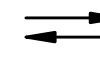
**Taper Formula**

$L = W * S$  for speeds of 45 mph or more

$L = (WS^2)/60$  for speeds of 40 mph or less

Where:  
 L = minimum length of taper  
 S = numerical value of posted speed prior to work  
 W = width of offset

**Legend**

-  Type III Barricade
-  Type B Warning Light
-  Reflective Barrels/Drums
-  Sign
-  Traffic Flow

The contractor shall eradicate all existing roadway markings that are in conflict with this plan. The cost of this work shall be subsidiary to other items of work.

**Traffic Control - Phase 2**  
**13th St. N. and Broadway Improvements**

**Ruggles & Bohm, P.A.**  
 Engineering, Surveying, Land Planning

224 North Main  
 Wichita, Kansas 67203  
 www.rbgpa.com

(316) 264-8008  
 (316) 264-4821 fax  
 E-mail: info@rbgpa.com

DESIGN	PDC	38
DRAWN	PDC	
DATE	Oct. 11, 2004	55