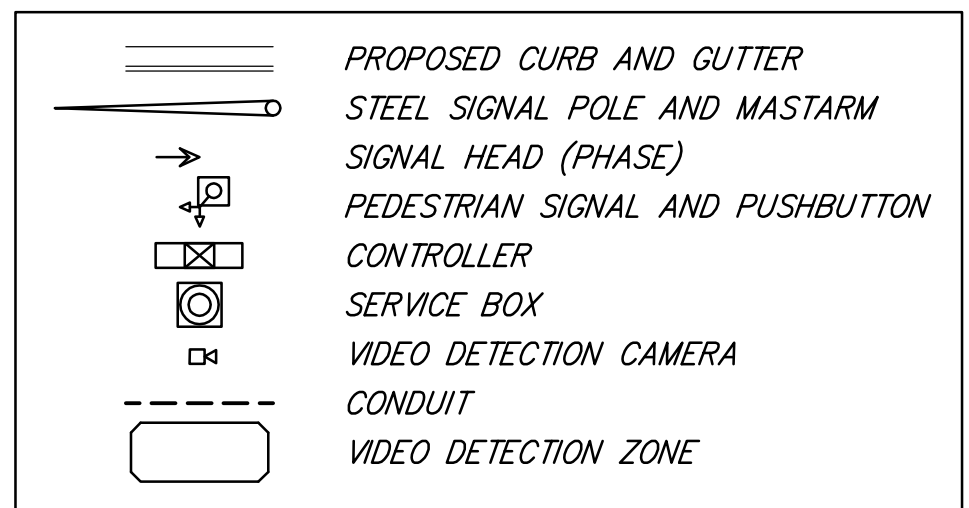
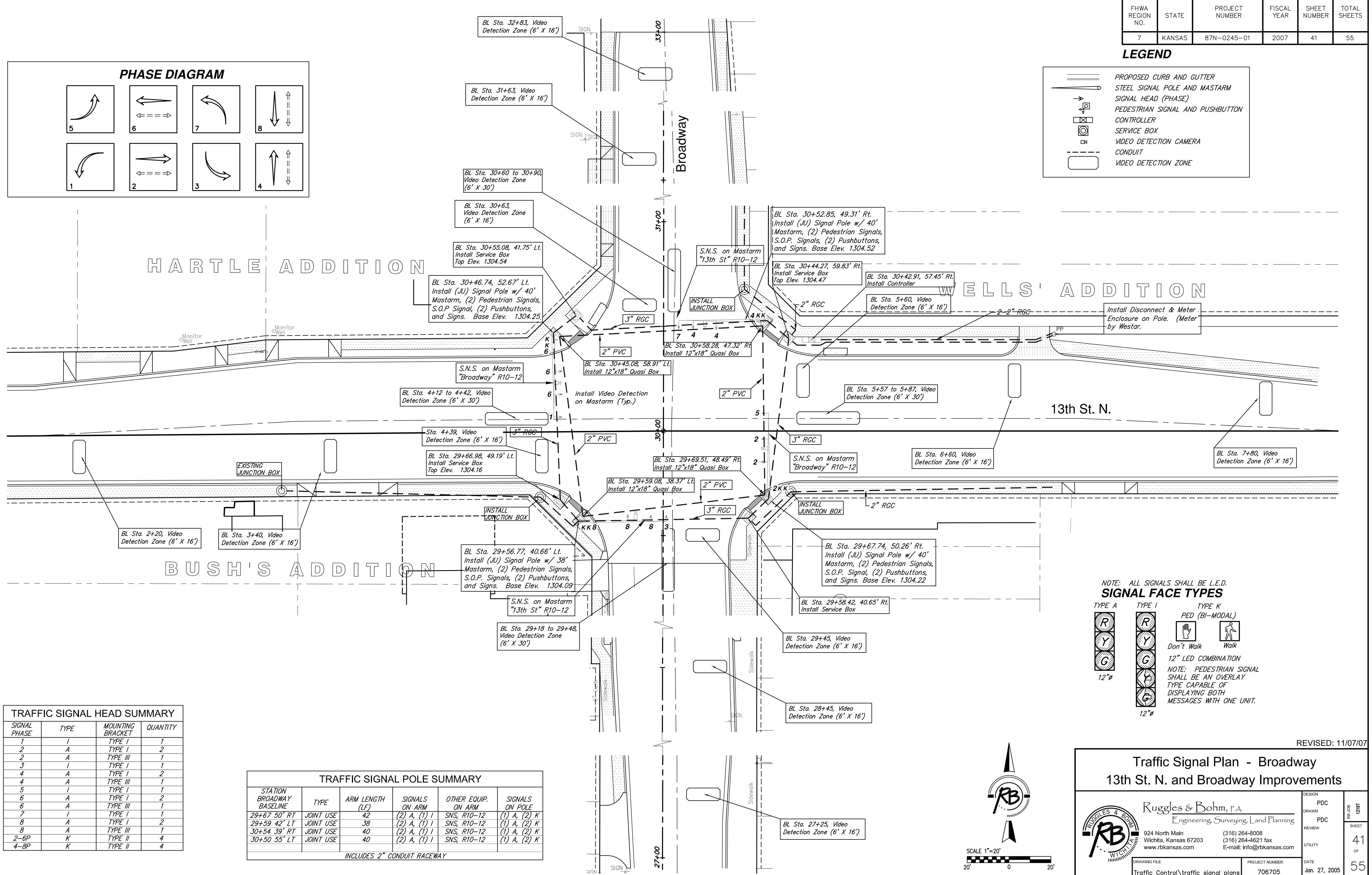
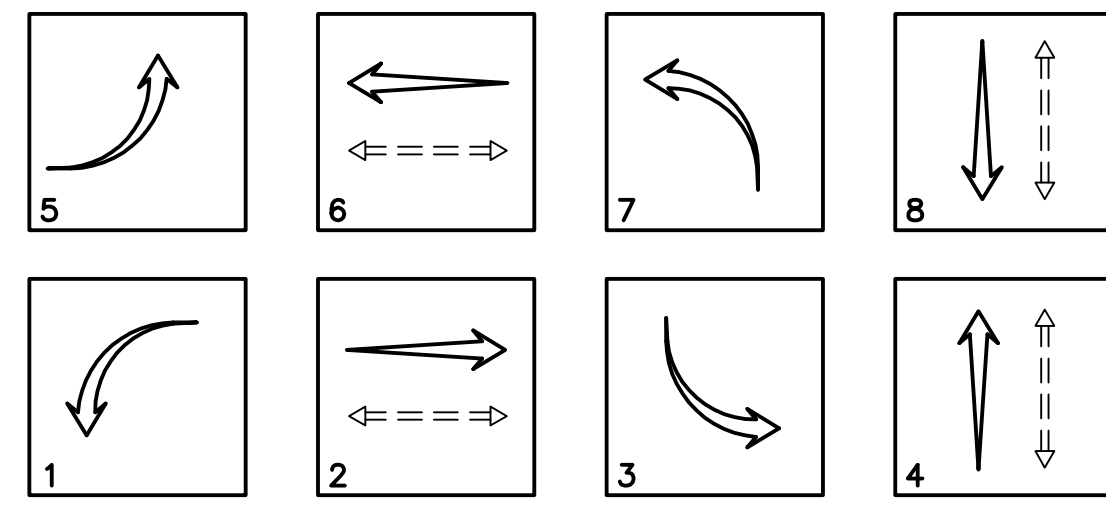


FHWA REGION NO.	STATE	PROJECT NUMBER	FISCAL YEAR	SHEET NUMBER	TOTAL SHEETS
7	KANSAS	87N-0245-01	2007	41	55

**LEGEND**



**PHASE DIAGRAM**



NOTE: ALL SIGNALS SHALL BE L.E.D.  
**SIGNAL FACE TYPES**  
 TYPE A: R, Y, G (12"Ø)  
 TYPE I: R, Y, G, W (12"Ø)  
 TYPE K: PED (BI-MODAL) Don't Walk, Walk (12" LED COMBINATION)  
 NOTE: PEDESTRIAN SIGNAL SHALL BE AN OVERLAY TYPE CAPABLE OF DISPLAYING BOTH MESSAGES WITH ONE UNIT.

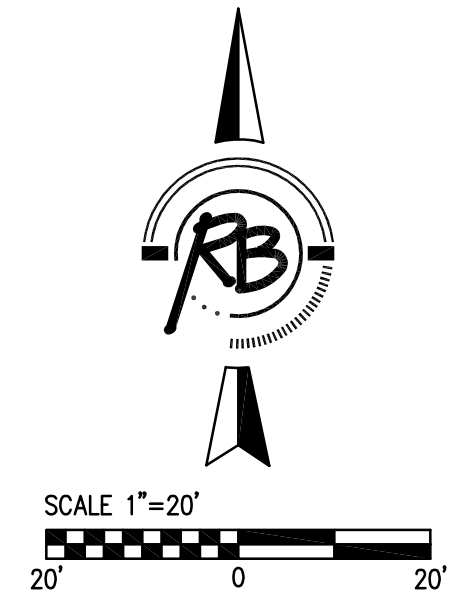
**TRAFFIC SIGNAL HEAD SUMMARY**

SIGNAL PHASE	TYPE	MOUNTING BRACKET	QUANTITY
1	I	TYPE I	1
2	A	TYPE I	2
2	A	TYPE III	1
3	I	TYPE I	1
4	A	TYPE I	2
4	A	TYPE III	1
5	I	TYPE I	1
6	A	TYPE I	2
6	A	TYPE III	1
7	I	TYPE I	1
8	A	TYPE I	2
8	A	TYPE III	1
2-6P	K	TYPE II	4
4-8P	K	TYPE II	4

**TRAFFIC SIGNAL POLE SUMMARY**

STATION BROADWAY BASELINE	TYPE	ARM LENGTH (LF)	SIGNALS ON ARM	OTHER EQUIP. ON ARM	SIGNALS ON POLE
29+67.50' RT	JOINT USE	42	(2) A, (1) I	SNS, R10-12	(1) A, (2) K
29+59.42' LT	JOINT USE	38	(2) A, (1) I	SNS, R10-12	(1) A, (2) K
30+54.39' RT	JOINT USE	40	(2) A, (1) I	SNS, R10-12	(1) A, (2) K
30+50.55' LT	JOINT USE	40	(2) A, (1) I	SNS, R10-12	(1) A, (2) K

INCLUDES 2" CONDUIT RACEWAY



REVISED: 11/07/07

**Traffic Signal Plan - Broadway  
13th St. N. and Broadway Improvements**

**Ruggles & Bohm, P.A.**  
 Engineering, Surveying, Land Planning  
 924 North Main Wichita, Kansas 67203 www.rbkansas.com (316) 264-8008 (316) 264-4621 fax E-mail: info@rbkansas.com

DESIGN: PDC  
 DRAWN: PDC  
 REVIEW: PDC  
 UTILITY: PDC  
 DATE: Jan. 27, 2005

DRAWING FILE: Traffic Control\traffic signal plans  
 PROJECT NUMBER: 706705

SHEET 41 OF 55