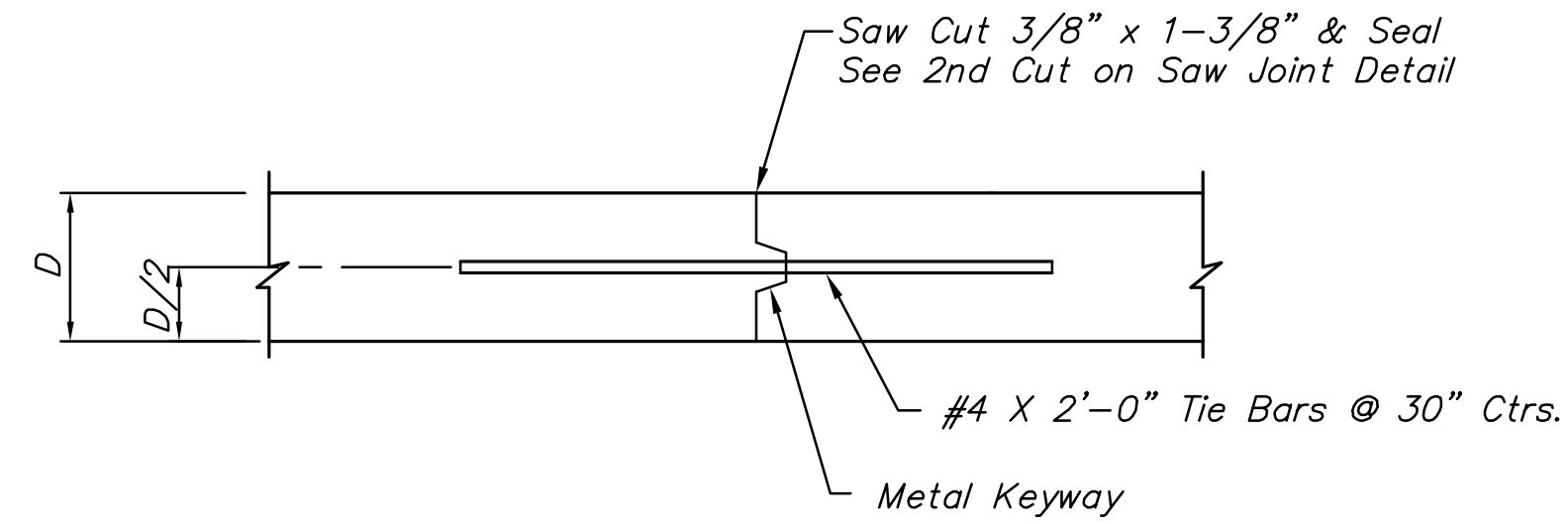
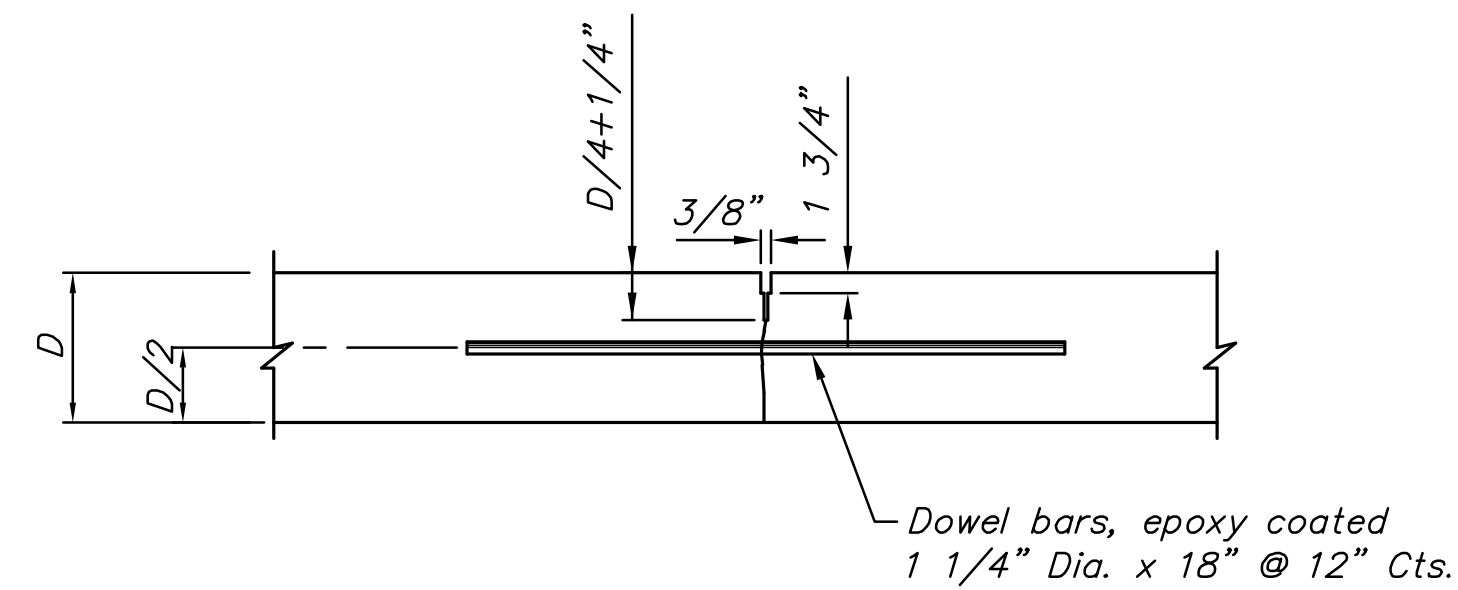


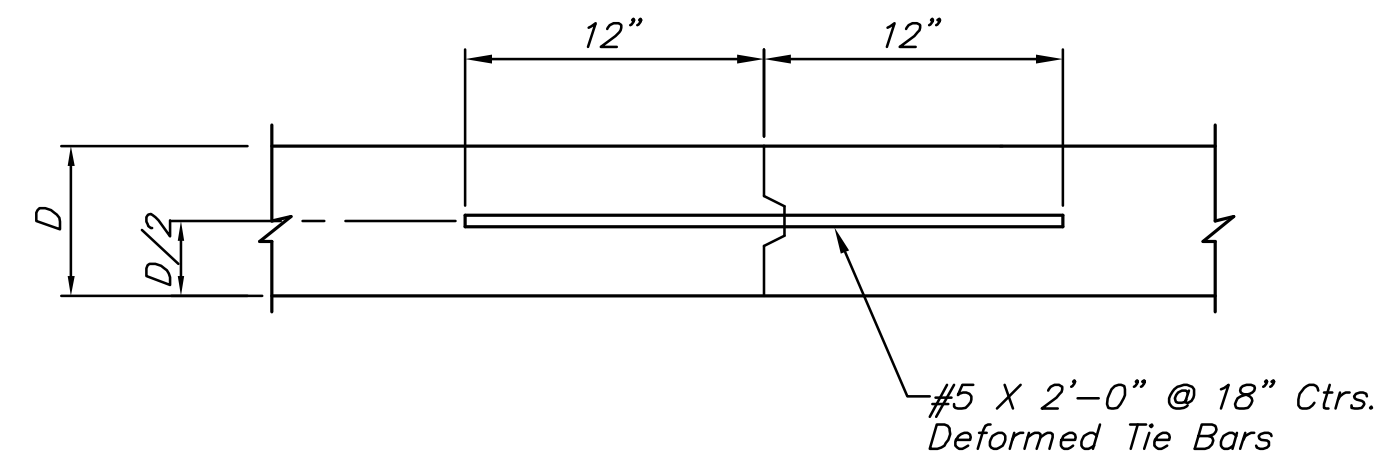
LONGITUDINAL JOINT DETAIL (L.J.)



OPTIONAL LONGITUDINAL JOINT DETAIL (L.J.)

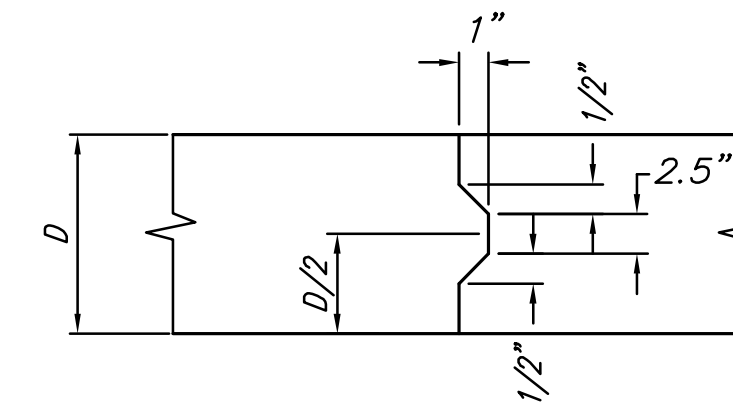


*** DOWELED CONTRACTION JOINT DETAIL (C.J.)**

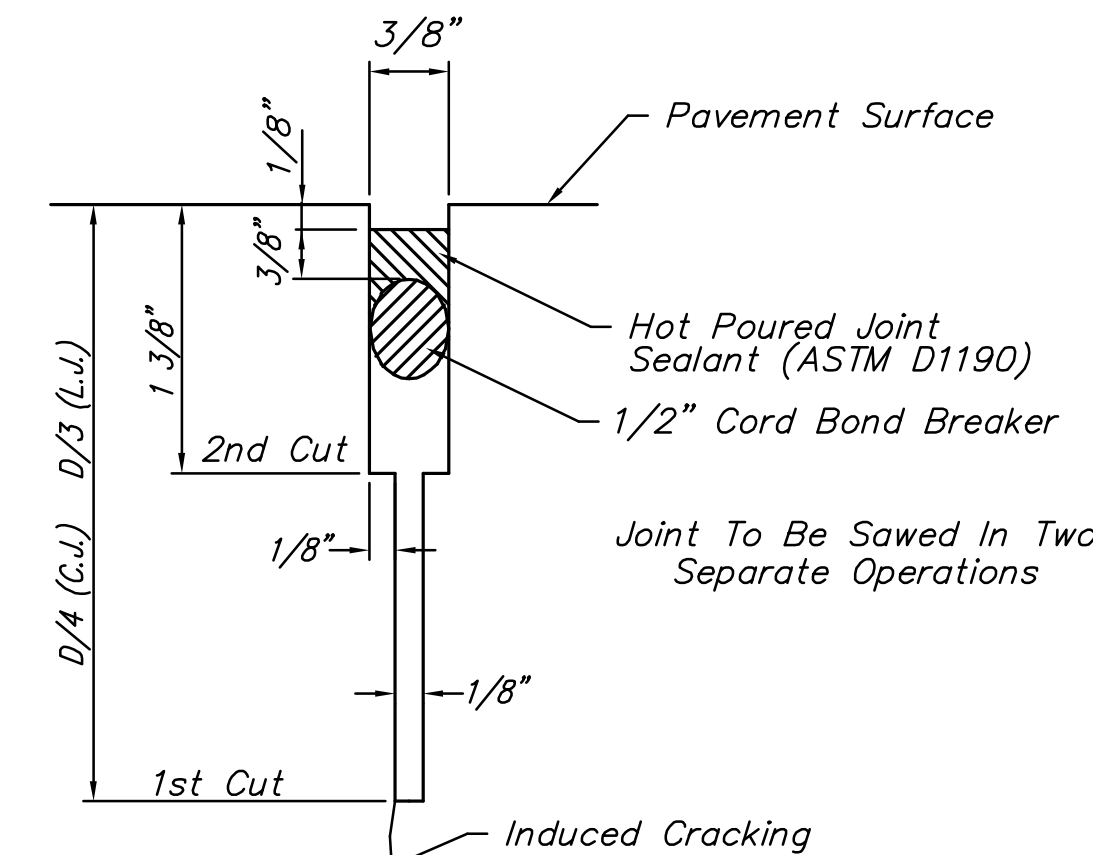


*** TIED CONSTRUCTION JOINT DETAIL (T.J.)**

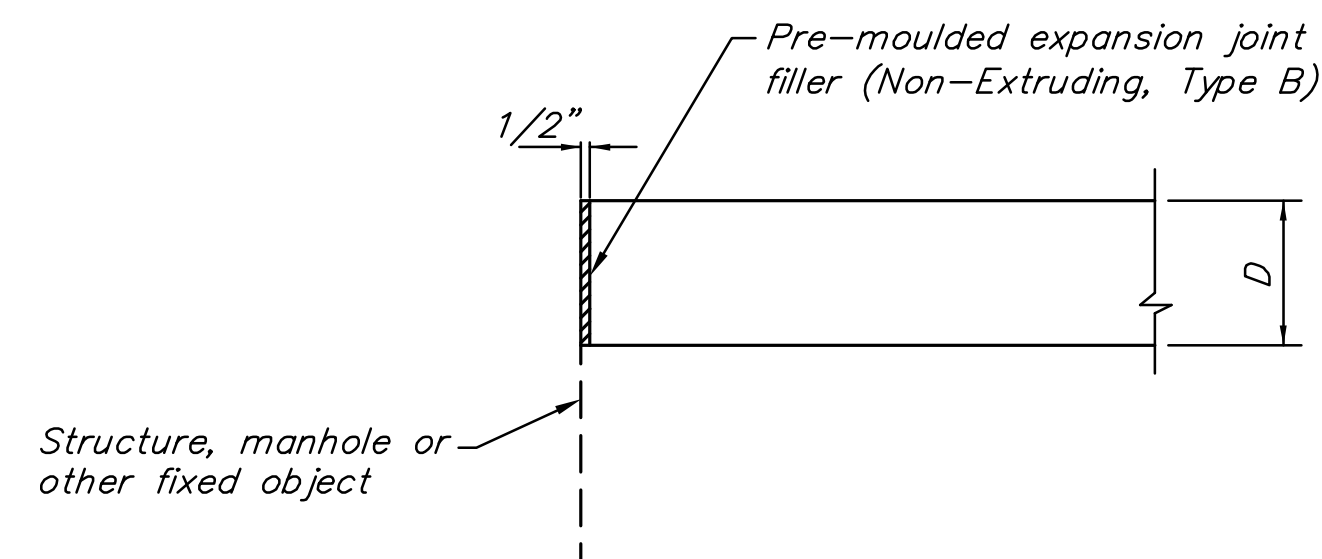
* Note: Contraction joints will be constructed at the planned location or as directed by the Engineer. When necessary to interrupt continuous placement for a substantial length of time or at the end of a day's pour, the Contractor has the option of ending placement at a contraction joint or with a construction joint located a minimum of five (5) feet from a contraction joint. Either joint type may be constructed by placing a header at the end of the pour or by paving past the joint location, sawing the joint after the concrete has hardened, and drilled holes for the tie bars and securing into the concrete with epoxy or cement grout.



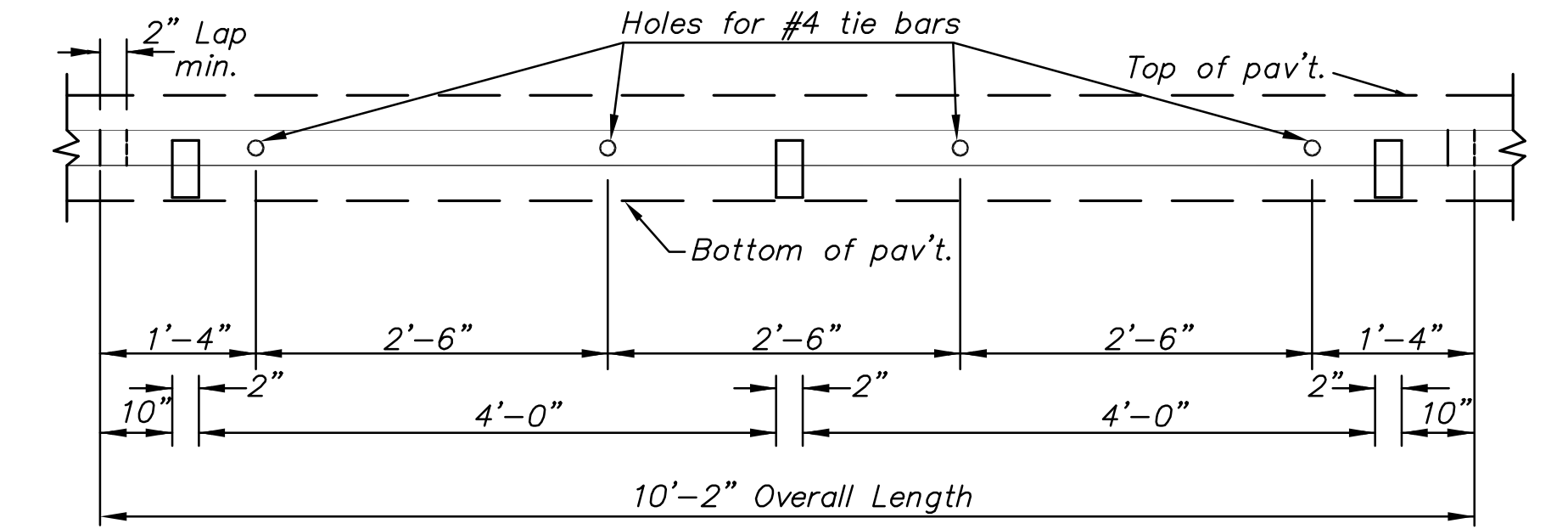
KEYWAY DETAIL



SAW JOINT DETAIL

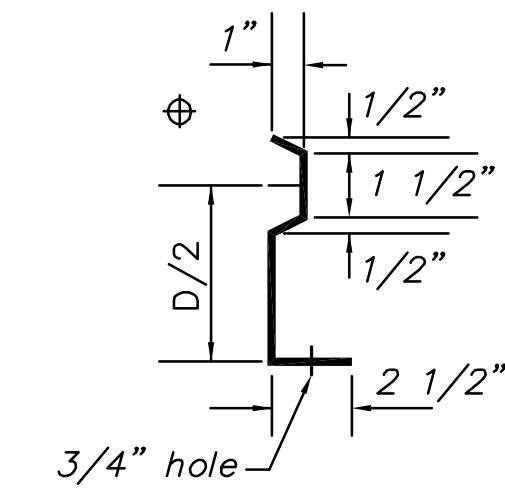


ISOLATION JOINT (I.J.)



METAL STRIP FOR LONGITUDINAL CONSTRUCTION JOINT

To be used only against forms. Shall not extend through contraction or expansion joints. Other types of construction shall be permitted with the approval of the engineer.



SECTION OF RECESSED FORM LEG

⊕ Snap-in leg or other approved designs may be used in lieu of welded leg.

J:\Civil\04177\ADDENDUM PLANS\04177ADD_PAVDETAIL2.DWG 11/07/2007 05:13:56 PM CST



**UTILITY IMPROVEMENTS
17TH STREET AT BSNF RAIL CORRIDOR**
PROJECT NAME

CONCRETE PAVEMENT DETAILS
SHEET TITLE

JRA DESIGN BY:	DPG DRAWN BY:	JRA CHECKED BY:
SEPTEMBER 2007 DATE	04177 JOB NO.	3 / 28 SHEET/OF