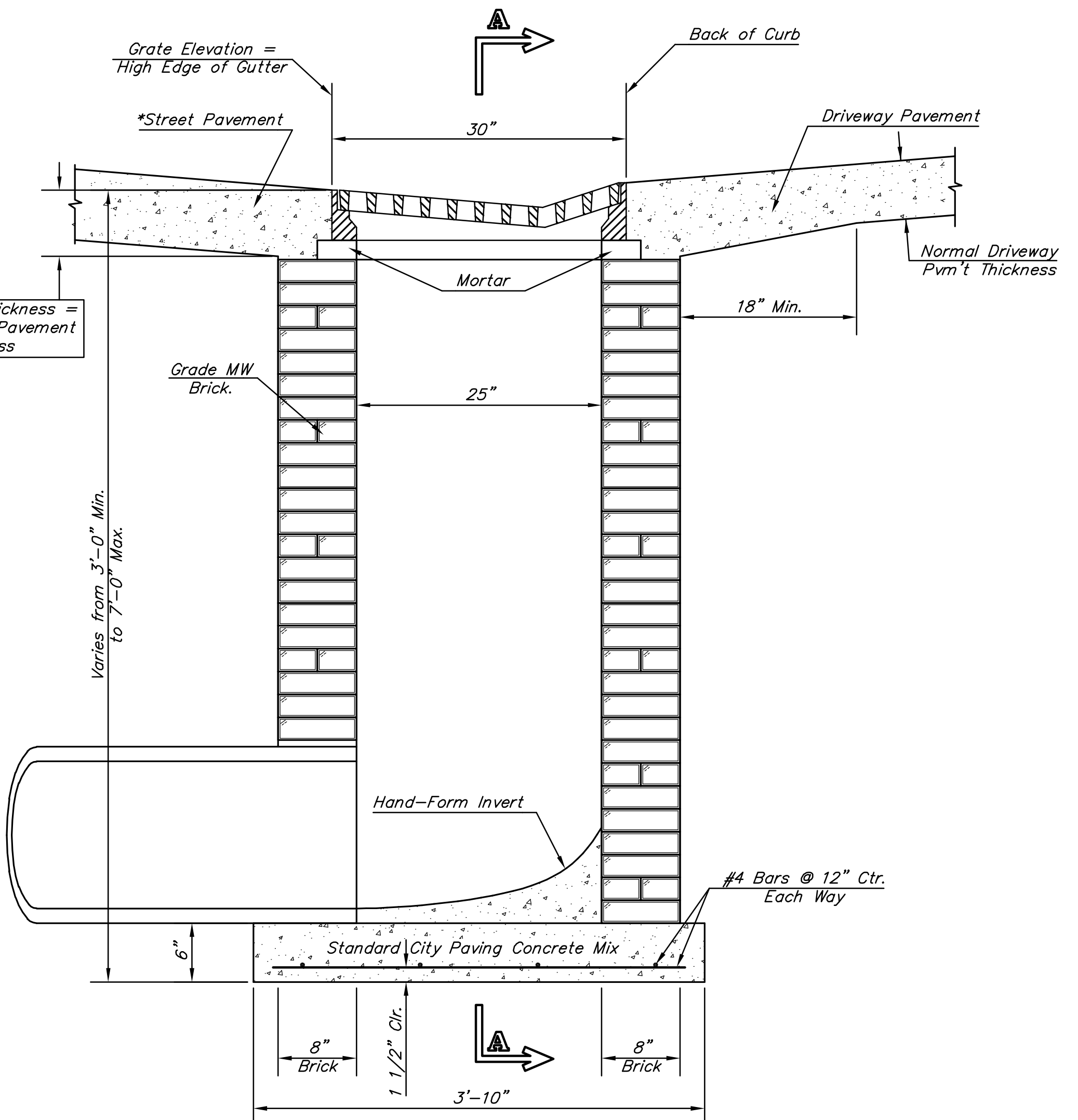
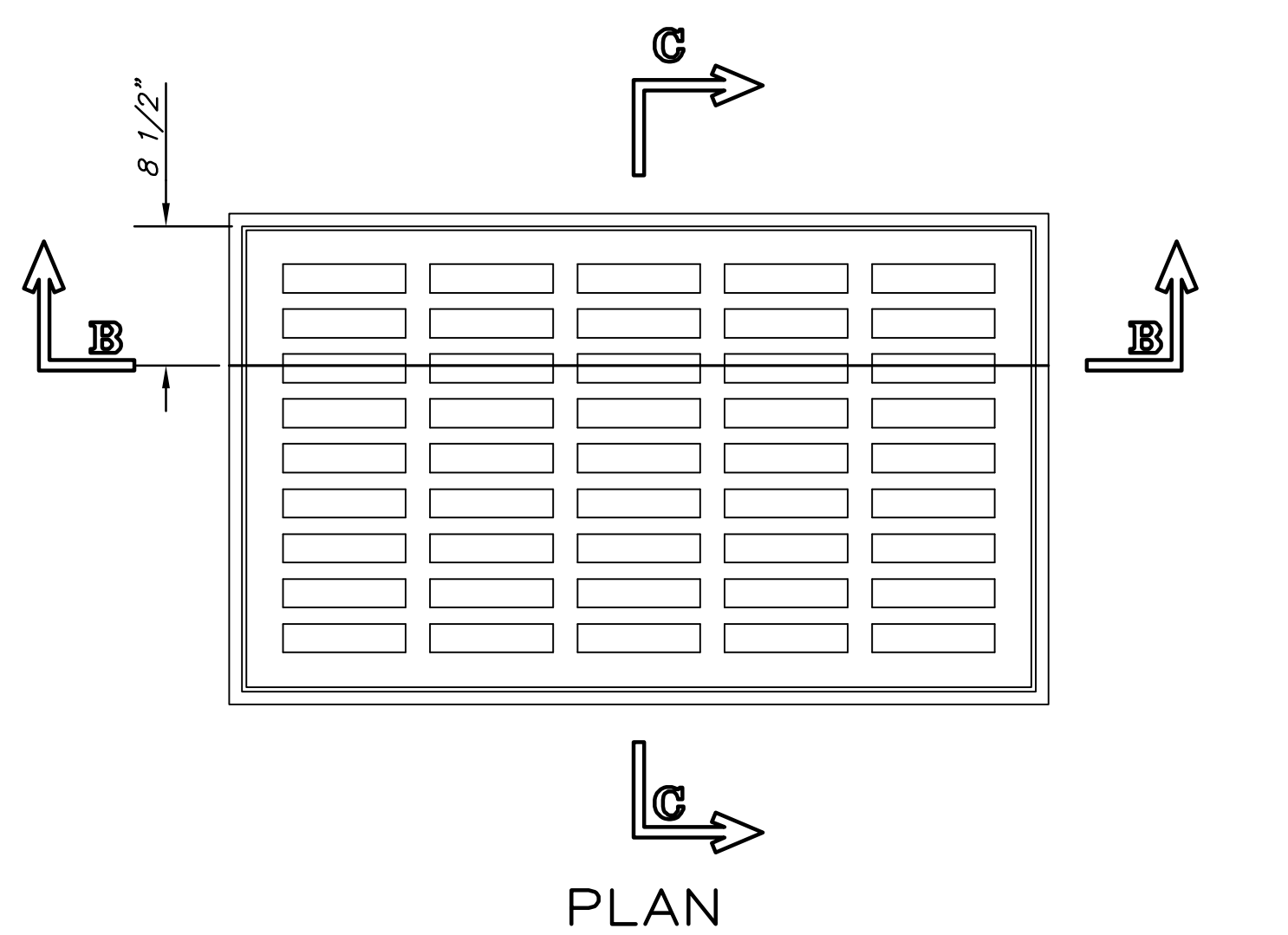


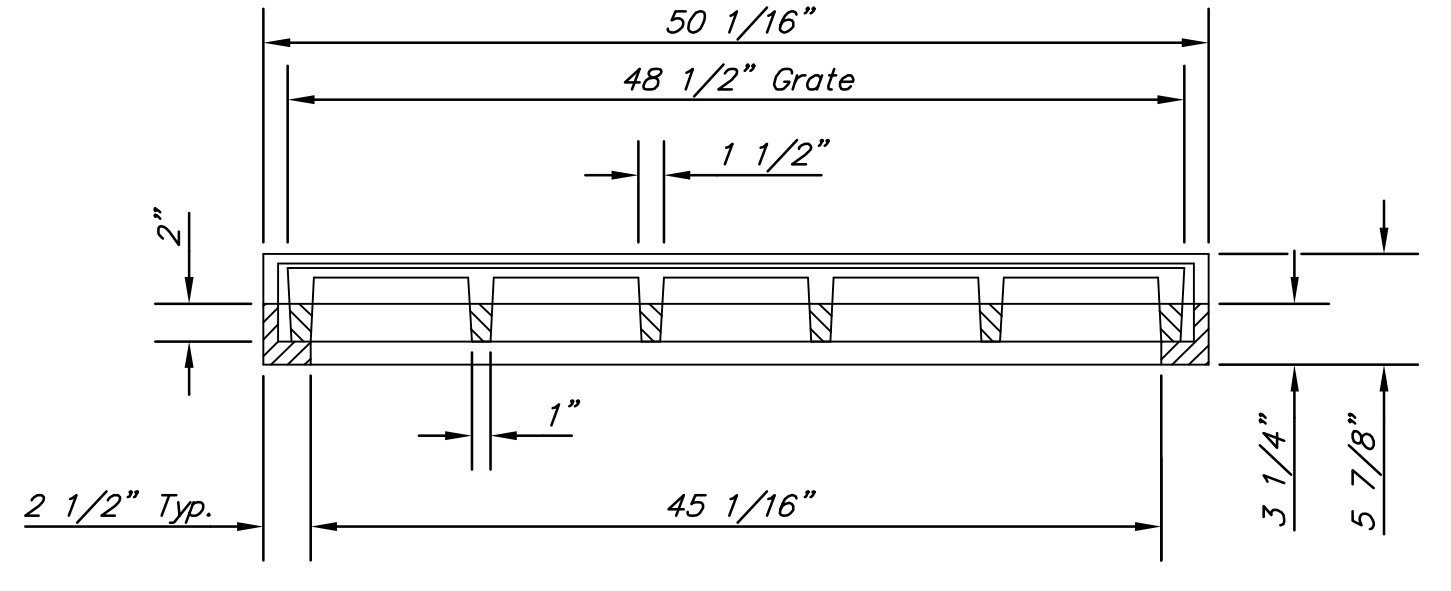
END OUTLET SECTION B-B



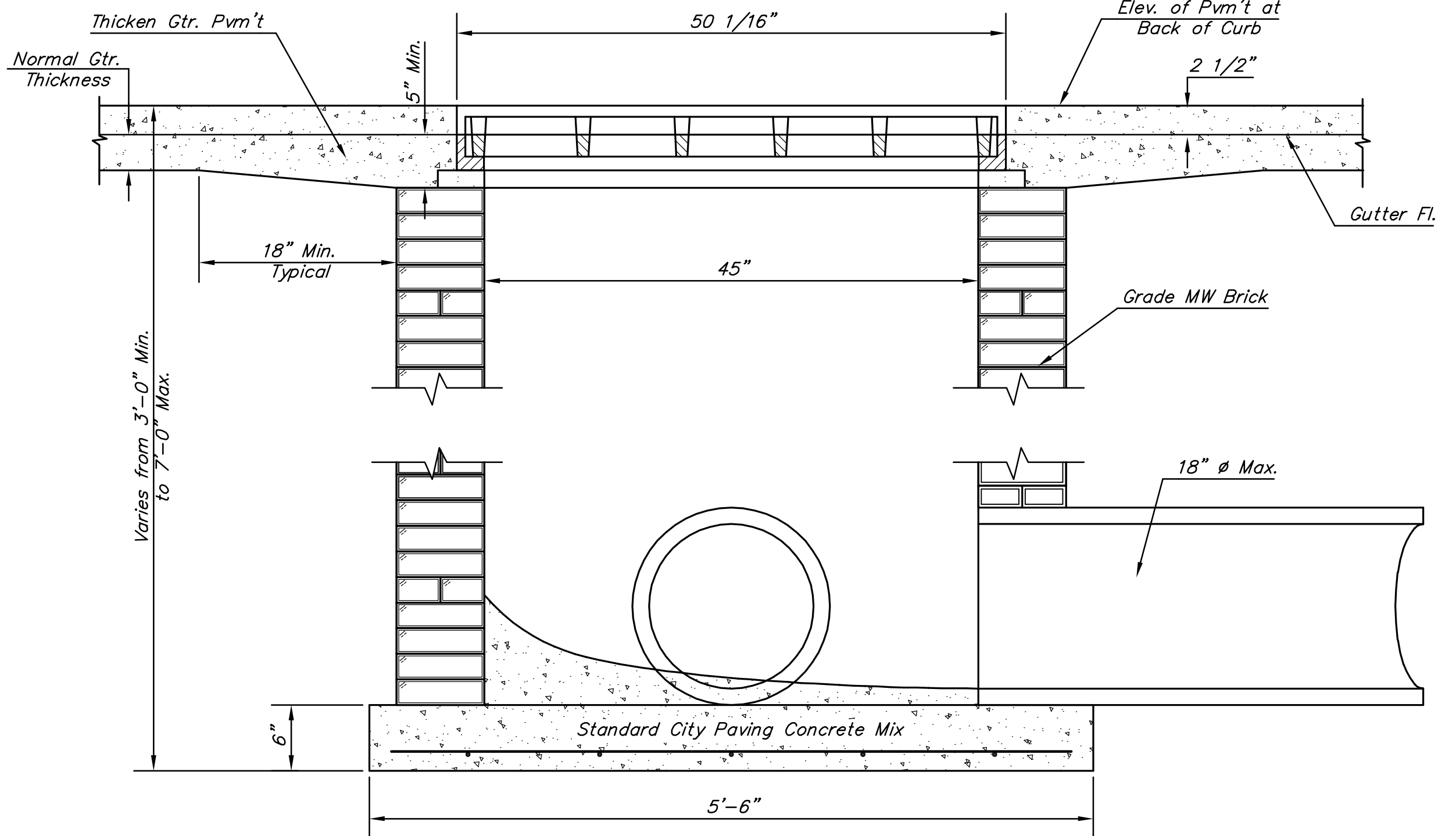
SIDE OUTLET SECTION B-B



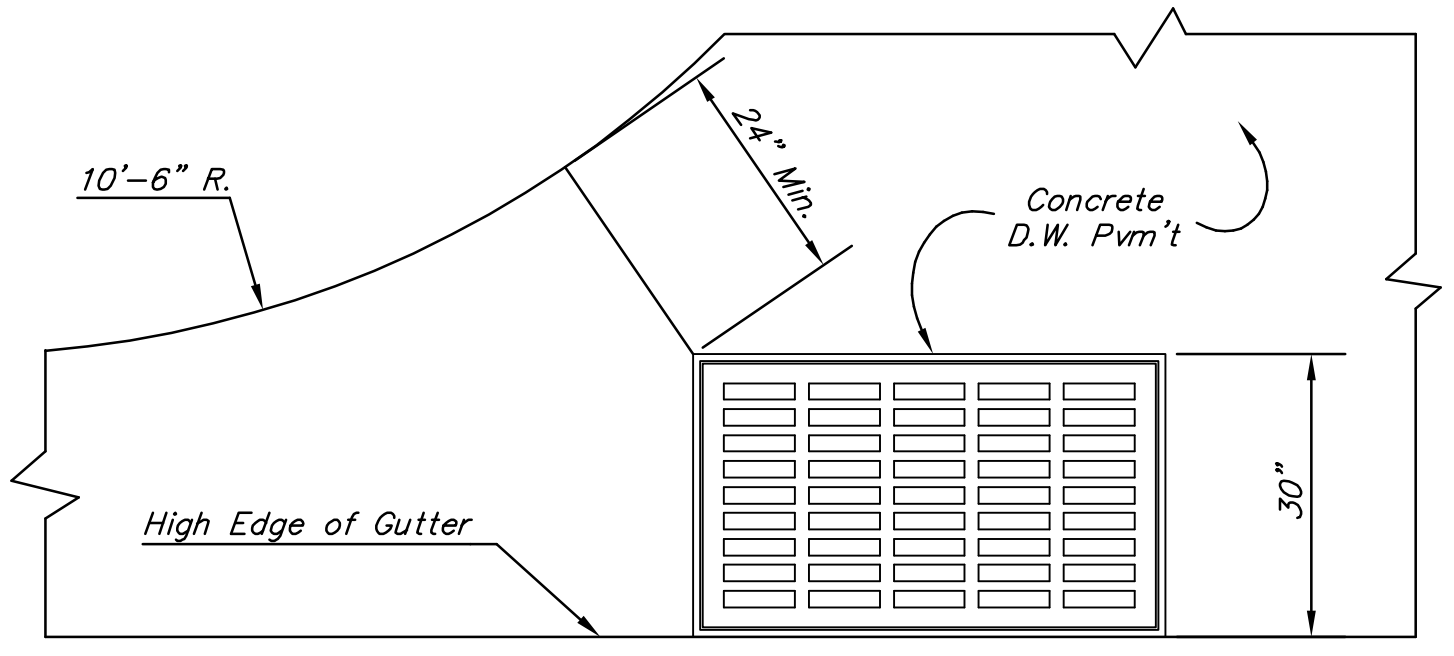
PLAN



SECTION B-B

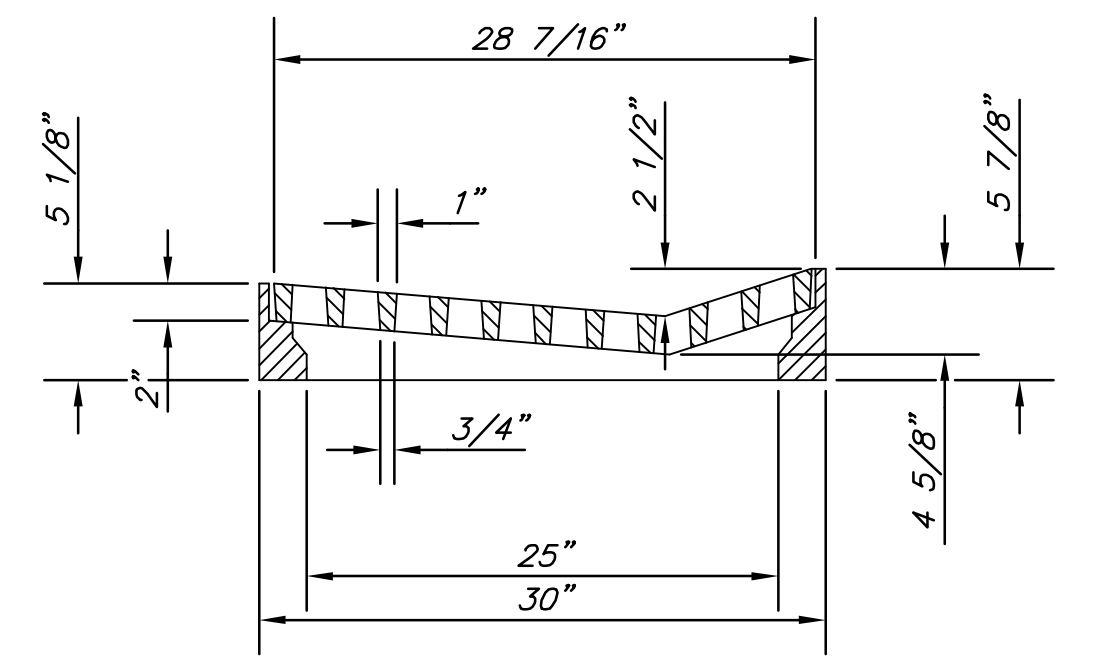


SECTION A-A



PLAN

Radius Ramp Drive to be Constructed On Lot 3, Block 2 per City Standard



SECTION C-C

GENERAL NOTES

1. Grate frame to be installed on thin mortar cushion to insure full support along brick walls. Concrete used for inlet construction shall be concrete pavement mix.
2. Inlet invert shall be shaped with 8 sack sand mix concrete to create flow channels and to increase hydraulic efficiency such that the inlet will be self cleaning between all inlet and/or outlet pipes.
3. The ends of all pipes installed in inlets shall be cut off flush with the inside face of the inlet wall.
4. Inlet Frame and Grate to be Deeter #2095 of approved equal

DEETER #2095 FRAME & GRATE

TOTAL WEIGHT: 705 lbs.

J:\Civil\04177\ADDENDUM PLANS\04177ADD\_SINGLE GRATE.dwg 11/19/2007 04:37:28 PM CST



UTILITY IMPROVEMENTS  
17TH STREET AT BSNF RAIL COORIDOR  
PROJECT NAME

DRIVEWAY GRATED INLET - SINGLE  
SHEET TITLE

JRA DESIGN BY:	DPG DRAWN BY:	JRA CHECKED BY:
SEPTEMBER 2007 DATE	04177 JOB NO.	12 / 28 SHEET/OF