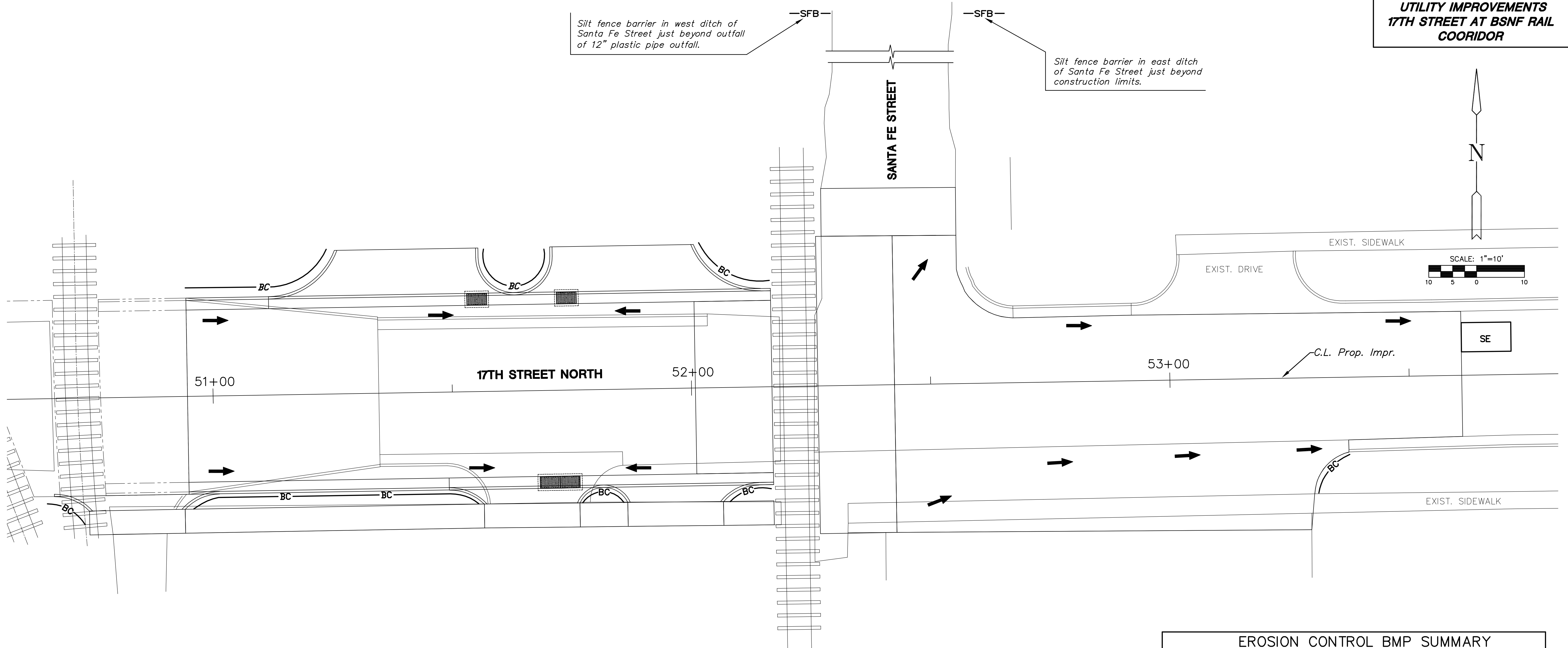


**UTILITY IMPROVEMENTS
17TH STREET AT BSNF RAIL
CORRIDOR**



Silt fence barrier in west ditch of Santa Fe Street just beyond outfall of 12" plastic pipe outfall.

Silt fence barrier in east ditch of Santa Fe Street just beyond construction limits.

LEGEND

- | | | | |
|--|-------------------------------|--|---------------------------------|
| | STABILIZED ENTRANCE | | SLOPE BARRIER |
| | STABILIZED ENTRANCE REMOVED | | SLOPE BARRIER REMOVED |
| | AREA INLET PROTECTION | | BACK OF CURB PROTECTION |
| | AREA INLET PROTECTION REMOVED | | BACK OF CURB PROTECTION REMOVED |
| | CURB INLET PROTECTION | | DITCH CHECK PROTECTION |
| | CURB INLET PROTECTION REMOVED | | DITCH CHECK PROTECTION REMOVED |
| | DIRECTION OF DRAINAGE | | SILT FENCE BARRIER |

EROSION CONTROL BMP SUMMARY		
ITEMS	QUANTITY	UNIT
Erosion Control BMP (Back of Curb Protection)	178	L.F.
Erosion Control BMP (Curb Inlet Protection)		Each
Erosion Control BMP (Stablization Entrances)	1	Each

RECAPITULATION		
BID ITEMS	TOTAL	UNIT
Erosion Control BMP (Back of Curb Protection)	178	L.F.
Erosion Control BMP (Curb Inlet Protection)		Each
Erosion Control BMP (Stablization Entrances)	1	Each

NOTES:
THIS PROJECT WILL DISTURB LESS THAN ONE ACRE.
REFER TO CITY OF WICHITA STANDARDS FOR BMP INSTALLATION, INSPECTION AND MAINTENANCE DETAILS AND SPECIFICATIONS.
COST FOR EACH EROSION AND SEDIMENT CONTROL ITEM SHALL INCLUDE MAINTENANCE, INSPECTION AND EVENTUAL REMOVAL. BESIDES KEEPING EACH DEVICE IN WORKING ORDER, MAINTENANCE SHALL INCLUDE, AT A MINIMUM, SEDIMENT REMOVAL BEFORE 50% OF THE DEVICE'S CAPACITY IS REACHED.
CONTRACTOR SHALL ADJUST EROSION AND SEDIMENT CONTROL PLANS TO CONFORM TO ACTUAL CONSTRUCTION OPERATIONS. ALL CHANGES TO PLAN SHALL BE APPROVED BY THE CITY.

J:\Civil\04177\ADDENDUM PLANS\04177ADD_EROSION PLAN.DWG 11/16/2007 02:02:12 PM CST

MKEC
ENGINEERING
CONSULTANTS
411 N. WEBB ROAD
WICHITA, KS. 67206
316 - 684 - 9600

**UTILITY IMPROVEMENTS
17TH STREET AT BSNF RAIL CORRIDOR**
PROJECT NAME

EROSION AND SEDIMENT CONTROL PLAN
SHEET TITLE

JRA DESIGN BY:	DPG DRAWN BY:	JRA CHECKED BY:
SEPTEMBER 2007 DATE	04177 JOB NO.	21 / 28 SHEET/OF