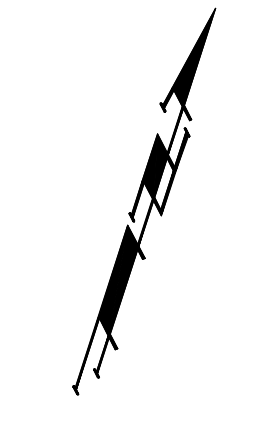
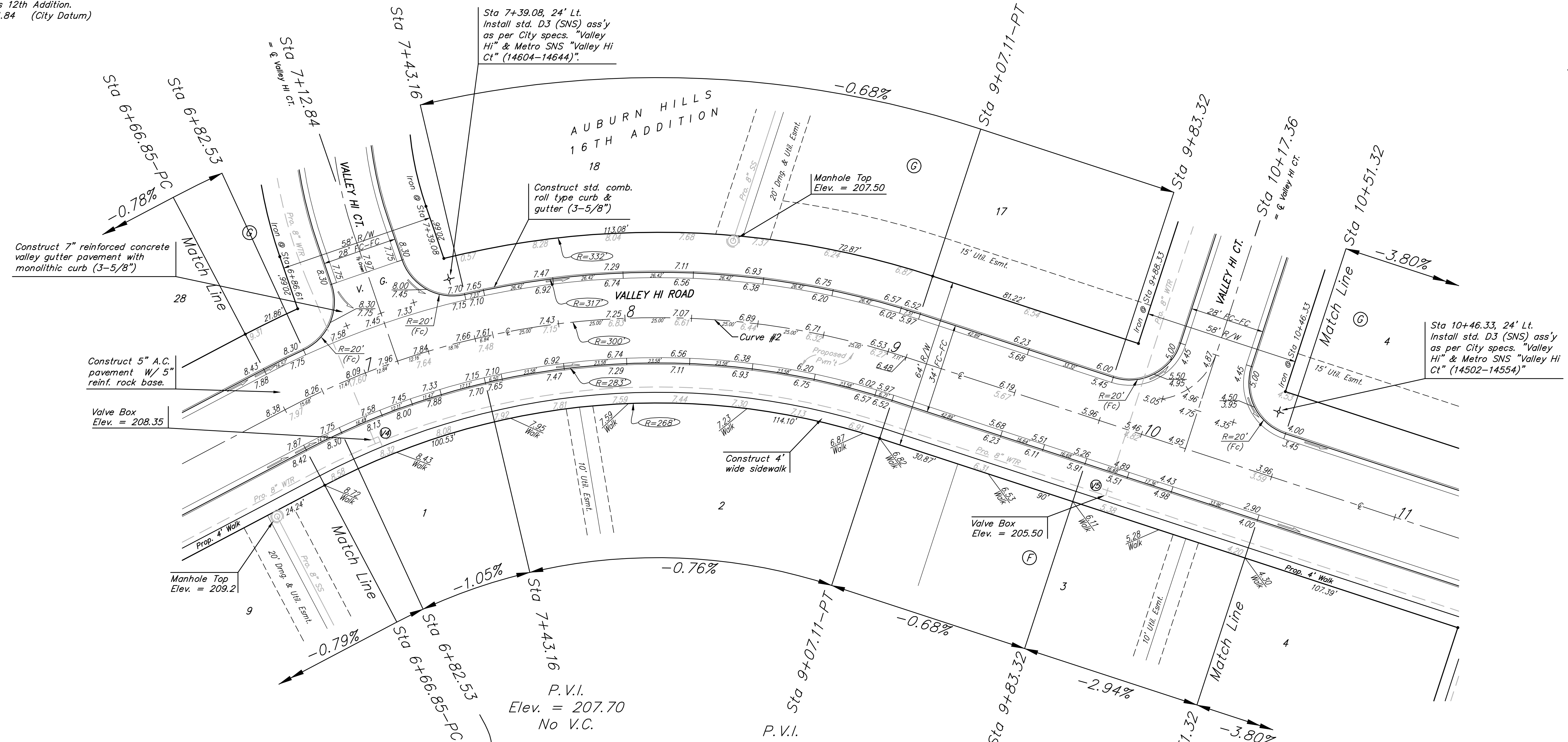


BENCHMARKS:
 BM #1: "C" Cut on Top of Curb at West Line of Lot 7, Block A, Auburn Hills 5th Addition. Elev. = 207.73 (City Datum)

BM #2: Disc in Back of Curb, North of Front Corner Common to Lots 23 and 24, Block D, Auburn Hills 12th Addition. Elev. = 191.84 (City Datum)



Scale: 1" = 20'
 • = Iron



Curve #2
 Curve Data Based on Centerline
 Rad. = 300', Delta = 45°53'09" Tangent = 126.99'
 Arc = 240.26' L.C. = 233.89' Def./Fl. = 5.72952 Min.

Station	Arc	Face Chord Lengths		Defl.	Total Defl.
		8' Left	8' Right		
6+66.85	-	-	-	0'00"00"	0'00"00"
6+82.53	15.68'	16.98'	14.37'	1'29"50"	1'29"50"
7+00.00	17.47'	18.92'	16.01'	1'40"06"	3'09"56"
7+12.84	12.84'	13.91'	11.77'	1'13"34"	4'23"30"
7+25.00	12.16'	13.17'	11.15'	1'09"40"	5'33"10"
7+43.16	18.16'	19.67'	16.64'	1'44"03"	7'17"13"
7+50.00	6.84'	7.41'	6.27'	0'39"12"	7'56"25"
7+75.00	25.00'	27.08'	22.91'	2'23"14"	10'19"39"
8+00.00	25.00'	27.08'	22.91'	2'23"14"	12'42"53"
8+25.00	25.00'	27.08'	22.91'	2'23"14"	15'06"07"
8+50.00	25.00'	27.08'	22.91'	2'23"15"	17'29"22"
8+75.00	25.00'	27.08'	22.91'	2'23"14"	19'52"36"
9+00.00	25.00'	27.08'	22.91'	2'23"14"	22'15"50"
9+07.11	7.11'	7.70'	6.52'	0'40"44"	22'56"34"

WATER VALVE LOCATION TABLE

VALVE NUMBER	BASELINE STATION	OFFSET DISTANCE	OFFSET DIRECTION
V4	6+93.24	26'	Rt.
V5	9+94.39	26'	Rt.

Paving contractor will be responsible to operate all water valves on the project, in the presence of the inspector, to ensure accessibility to the valves, and that all valves are left in the "ON" position when the project is completed.

Trees and shrubs in public right-of-way which are in direct conflict with proposed new construction shall be removed by the Contractor ONLY with the Developer or Baughman Company approval. Trees and shrubs which are not in direct conflict with proposed new construction shall be saved and protected from damage.

NOTE: ROLL TYPE CURB & GUTTER TO BE CONSTRUCTED ON THE PAVEMENT SHOWN ON THIS SHEET. TOP OF CURB ELEVATIONS ARE GIVEN FOR FULL HEIGHT CURB.

Baughman ENGINEERING | SURVEYING | PLANNING | LANDSCAPE ARCHITECTURE

VALLEY HI ROAD
 Sta 6+66.85 to Sta 10+51.32

AUBURN HILLS 16TH ADD. - PH. III

PROJECT NUMBER 47284292	DESIGN AEG	DRAWN JRW
REVISIONS:	APPROVED AEG	DATE 12-05-07
SCALE Noted		SHEET 8 OF 52

AuburnHills16th\Phase3\Str1 07-09-E928