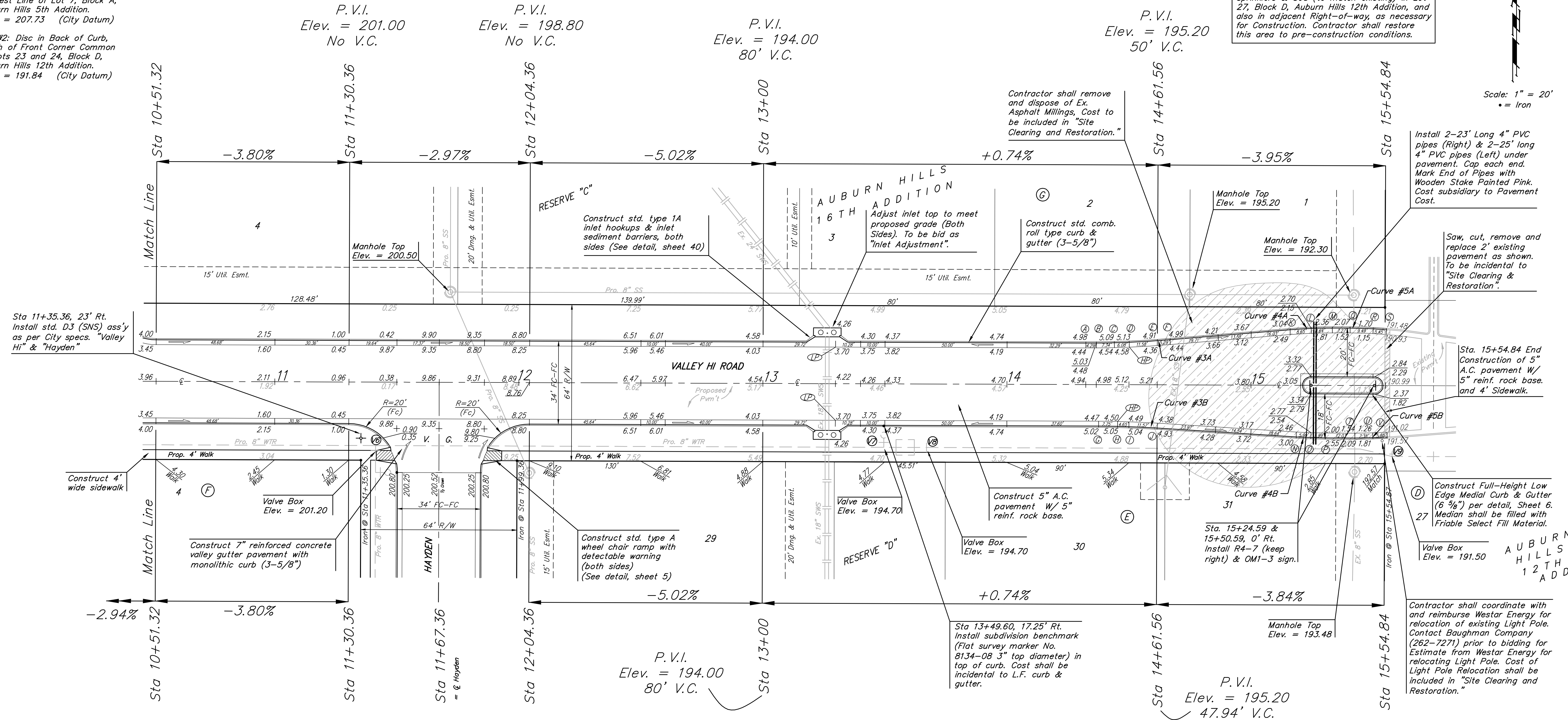


BENCHMARKS:
 BM #1: "C" Cut on Top of Curb at West Line of Lot 7, Block A, Auburn Hills 5th Addition. Elev. = 207.73 (City Datum)
 BM #2: Disc in Back of Curb, North of Front Corner Common to Lots 23 and 24, Block D, Auburn Hills 12th Addition. Elev. = 191.84 (City Datum)

Note: Contractor shall remove/replace Sprinklers & Sod (to match existing) in Lot 27, Block D, Auburn Hills 12th Addition, and also in adjacent Right-of-way, as necessary for construction. Contractor shall restore this area to pre-construction conditions.

Scale: 1" = 20'
 • = Iron



Curve #3A
 Curve Data Based on Centerline
 Rad. = 400' Delta = 4°57'12" Tangent = 17.30'
 Arc = 34.58' L.C. = 34.57' Def./Ft. = 4.29728 Min.

Station	Arc	Face Chord Lengths		
		8' Left	Defl.	Total Defl.
A	-	0'00'00"	0'00'00"	
B	4.29'	4.20'	0'18'26"	0'18'26"
C	7.34'	7.19'	0'31'33"	0'49'59"
D	6.08'	5.96'	0'26'02"	1'16'06"
E	11.58'	11.35'	0'49'46"	2'05'52"
F	5.29'	5.18'	0'22'44"	2'28'36"

Curve #4A
 Curve Data Based on Centerline
 Rad. = 200' Delta = 4°57'13" Tangent = 8.65'
 Arc = 17.29' L.C. = 17.29' Def./Ft. = 8.59505 Min.

Station	Arc	Face Chord Lengths		
		8' Left	Defl.	Total Defl.
K	-	0'00'00"	0'00'00"	
L	8.65'	9.00'	1'14'21"	1'14'21"
M	8.64'	8.99'	1'14'15"	2'28'36"

Curve #5A
 Curve Data Based on Centerline
 Rad. = 200' Delta = 4'16'50" Tangent = 7.47'
 Arc = 14.94' L.C. = 14.94' Def./Ft. = 8.59549 Min.

Station	Arc	Face Chord Lengths		
		8' Left	Defl.	Total Defl.
Q	-	0'00'00"	0'00'00"	
R	9.49'	9.87'	1'21'34"	1'21'34"
S	5.45'	5.67'	0'46'51"	2'08'25"

Curve #3B
 Curve Data Based on Centerline
 Rad. = 400' Delta = 3'26'01" Tangent = 11.99'
 Arc = 23.97' L.C. = 23.97' Def./Ft. = 4.29739 Min.

Station	Arc	Face Chord Lengths		
		8' Right	Defl.	Total Defl.
G	-	0'00'00"	0'00'00"	
H	7.75'	7.60'	0'33'18"	0'33'18"
I	4.65'	4.56'	0'19'59"	0'33'17"
J	11.57'	11.34'	0'49'44"	1'43'01"

Curve #4B
 Curve Data Based on Centerline
 Rad. = 200' Delta = 3'26'02" Tangent = 6.00'
 Arc = 11.98' L.C. = 11.98' Def./Ft. = 8.59905 Min.

Station	Arc	Face Chord Lengths		
		8' Right	Defl.	Total Defl.
N	-	0'00'00"	0'00'00"	
O	5.99'	6.23'	0'31'31"	0'51'31"
P	5.99'	6.23'	0'31'30"	1'43'01"

Curve #5B
 Curve Data Based on Centerline
 Rad. = 200' Delta = 3'47'57" Tangent = 6.63'
 Arc = 13.26' L.C. = 13.26' Def./Ft. = 8.59540 Min.

Station	Arc	Face Chord Lengths		
		8' Right	Defl.	Total Defl.
T	-	0'00'00"	0'00'00"	
U	7.38'	7.68'	1'03'26"	1'03'26"
V	5.88'	6.12'	0'50'33"	1'53'59"

WATER VALVE LOCATION TABLE

VALVE NUMBER	BASELINE STATION	OFFSET DISTANCE	OFFSET DIRECTION
V6	11+41.36	26'	Rt.
V7	13+49.62	26'	Rt.
V8	13+67.12	26'	Rt.
V9	15+57.87	29'	Rt.

NOTE: ROLL TYPE CURB & GUTTER TO BE CONSTRUCTED ON THE PAVEMENT SHOWN ON THIS SHEET. TOP OF CURB ELEVATIONS ARE GIVEN FOR FULL HEIGHT CURB.

Paving contractor will be responsible to operate all water valves on the project, in the presence of the inspector, to ensure accessibility to the valves, and that all valves are left in the "ON" position when the project is completed.

Trees and shrubs in public right-of-way which are in direct conflict with proposed new construction shall be removed by the Contractor ONLY with the Developer or Baughman Company approval. Trees and shrubs which are not in direct conflict with proposed new construction shall be saved and protected from damage.

Baughman AUBURN HILLS 16TH ADD. - PH. III
VALLEY HI ROAD
 Sta 10+51.32 to Sta 15+54.84

Baughman Company, P.A. 315 Ellis St. Wichita, KS 67211 P 316-262-7271 F 316-262-0149
 ENGINEERING | SURVEYING | PLANNING | LANDSCAPE ARCHITECTURE

PROJECT NUMBER: 47284292
 DESIGN: AEG
 DRAWN: JRW

APPROVED: AEG
 DATE: 12-05-07

SCALE: Noted
 SHEET: 9 OF 52

AuburnHills16th\Phase3\Str1 07-09-E928