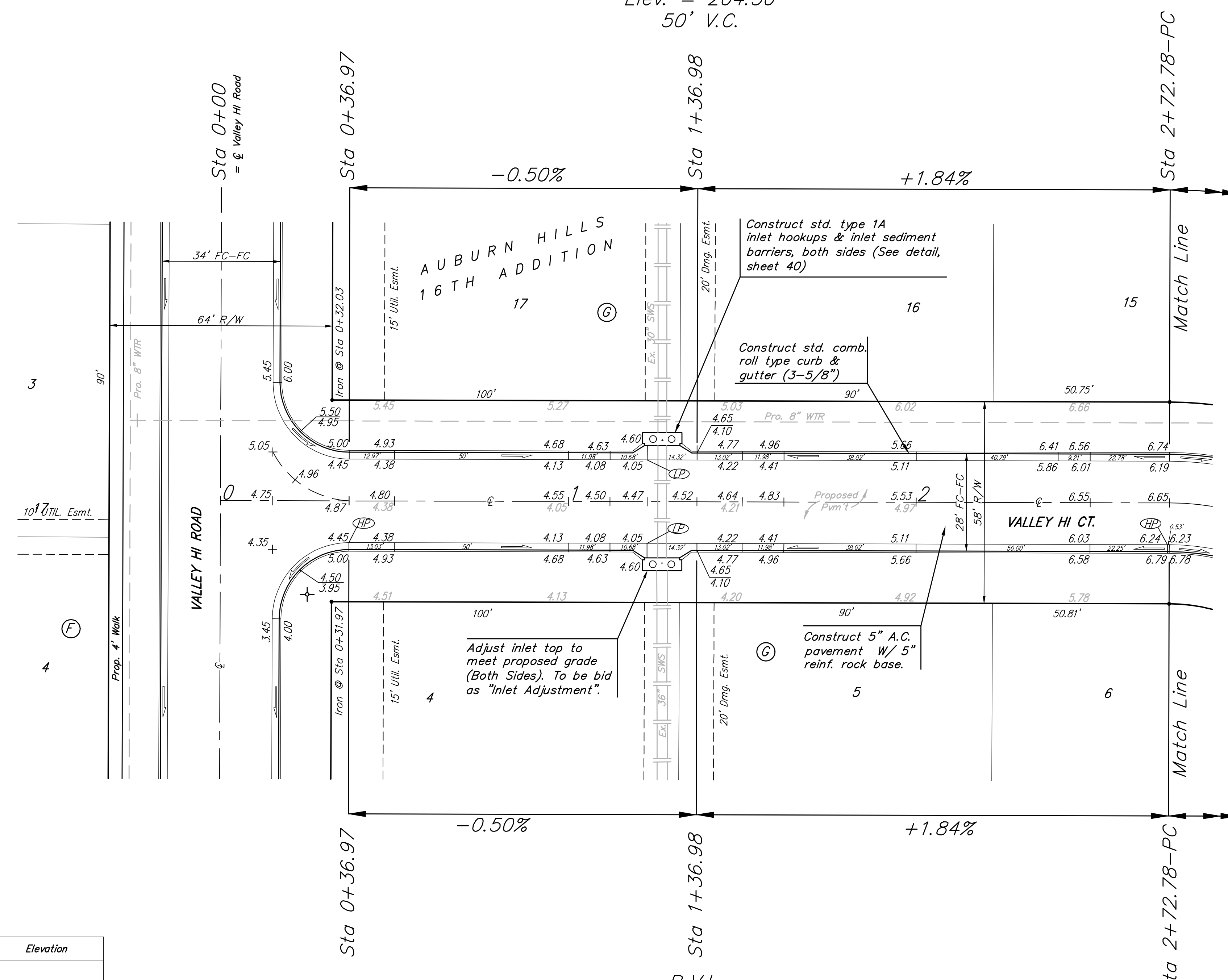
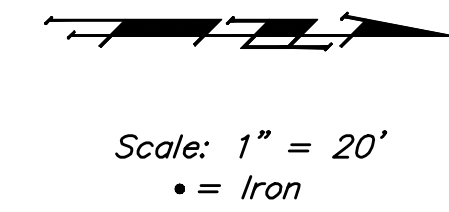


BENCHMARKS:

BM #1: "C" Cut on Top of Curb at West Line of Lot 7, Block A, Auburn Hills 5th Addition. Elev. = 207.73 (City Datum)

BM #2: Disc in Back of Curb, North of Front Corner Common to Lots 23 and 24, Block D, Auburn Hills 12th Addition. Elev. = 191.84 (City Datum)

P.V.I.
Elev. = 207.00
63.98' V.C.



P.V.I.
Elev. = 204.50
50' V.C.

P.V.I.
Elev. = 207.00
45.56' V.C.

Subdivision Bench Marks

Street & Station	Location Description	Elevation
Valley Hi Road 13+49.60, 17.25' Rt.	Adjacent to Fire Hydrant between Lots 29 and 30, Block E.	
Hayden 0+33.80, 17.25' Lt.	Adjacent to Fire Hydrant at NE End of N Curb Return of Hayden & Fawnwood	
Hayden 7+45.93, 17.25' Lt.	Adjacent to Fire Hydrant at S end of W Curb Return of Hayden & Valley Hi Road	
Valley Hi Ct. (Lots 18-28, Block G) 1+04.24, 14.25' Lt.	Adjacent to Fire Hydrant between Lots 27-28, Block G.	
Valley Hi Ct. (Lots 4-17, Block C) 3+41.47, 14.25' Lt.	Adjacent to Fire Hydrant between Lots 13-14, Block G.	
McCormick Cir. (Lots 12-20, Block A) 2+65.45, 14.25' Lt.	Adjacent to Fire Hydrant at E End of N Curb Return of Fawnwood & McCormick Cir.	
McCormick Cir. (Lots 4-20, Block E) 3+21.66, 14.25' Lt.	Adjacent to Fire Hydrant between Lots 17-18, Block E.	

Trees and shrubs in public right-of-way which are in direct conflict with proposed new construction shall be removed by the Contractor ONLY with the Developer or Baughman Company approval. Trees and shrubs which are not in direct conflict with proposed new construction shall be saved and protected from damage.

NOTE: ROLL TYPE CURB & GUTTER TO BE CONSTRUCTED ON THE PAVEMENT SHOWN ON THIS SHEET. TOP OF CURB ELEVATIONS ARE GIVEN FOR FULL HEIGHT CURB.

	AUBURN HILLS 16TH ADD. - PH. III	
	VALLEY HI CT. Sta 0+00 to Sta 2+72.78	
Baughman Company, P.A. 315 Ellis St. Wichita, KS 67211 P 316-262-7271 F 316-262-0149 ENGINEERING SURVEYING PLANNING LANDSCAPE ARCHITECTURE		
PROJECT NUMBER 47284292	DESIGN AEG	DRAWN JRW
REVISIONS:	APPROVED AEG	DATE 12-05-07
SCALE Noted		SHEET 15 OF 52
AuburnHills16th\Phase3\Str1		07-09-E928