

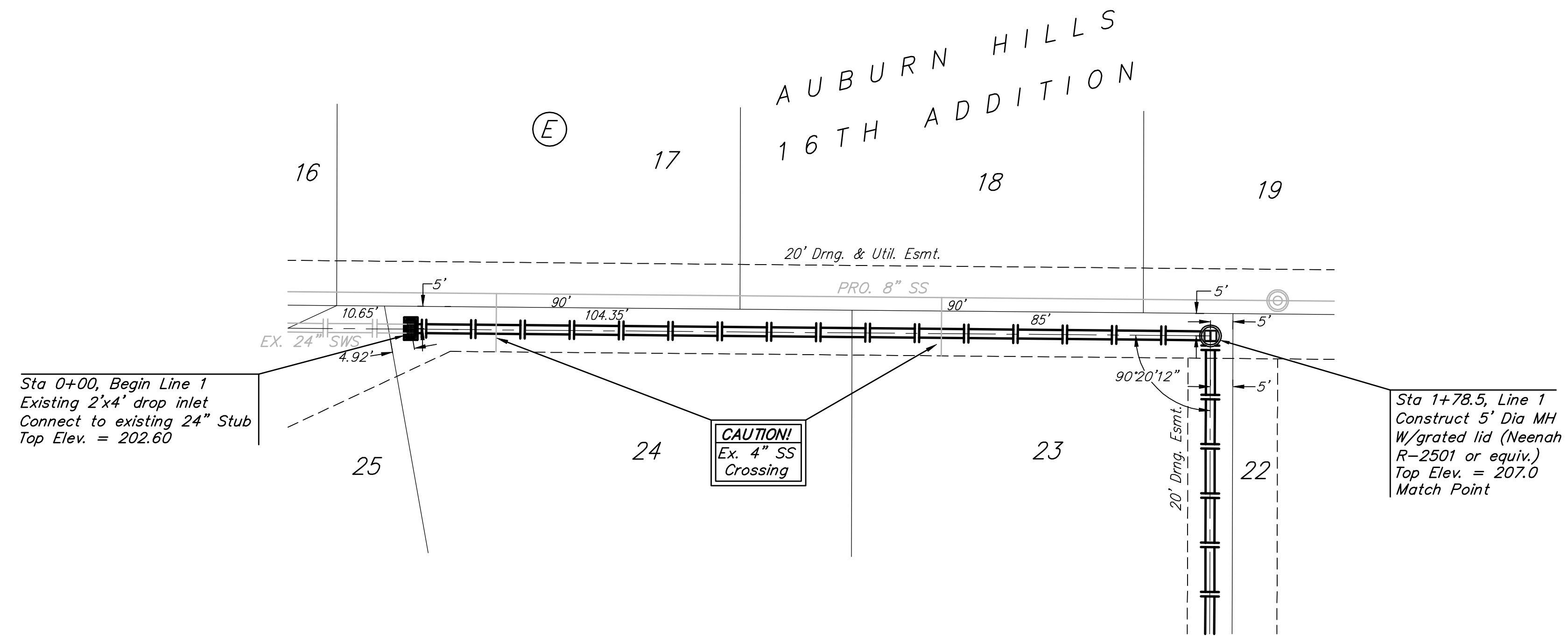
Scale: 1" = 20' Horizontal
 1" = 5' Vertical
 • = Iron



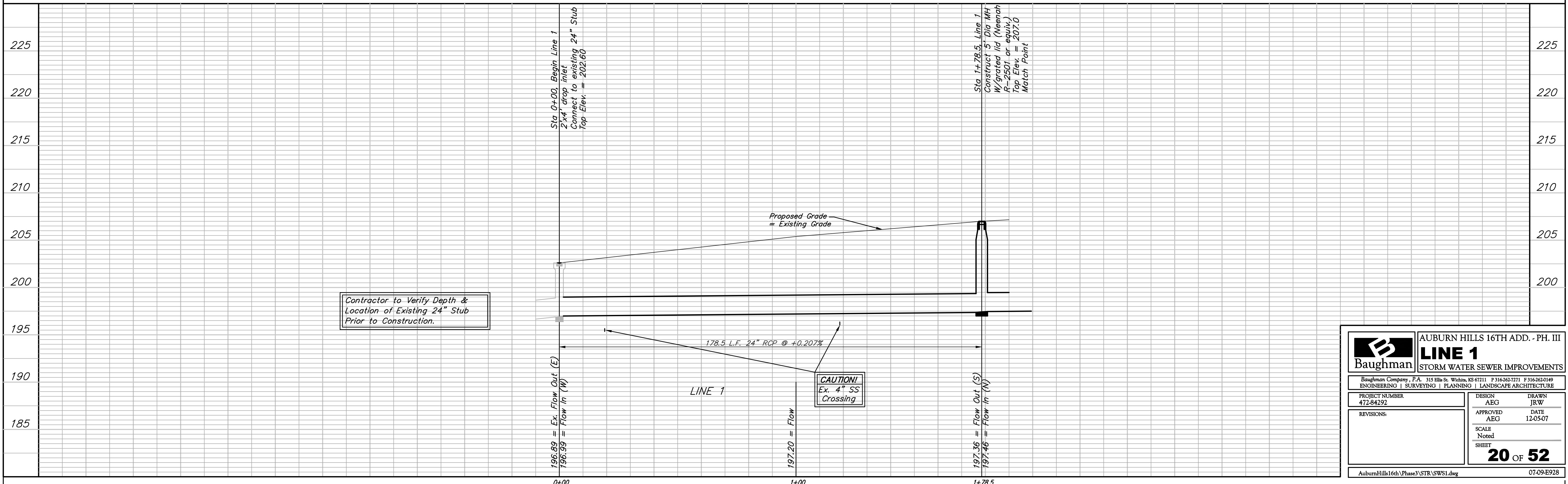
BENCHMARKS:

BM #1: "I" Cut on Top of Curb at West Line of Lot 7, Block A, Auburn Hills 5th Addition. Elev. = 207.73 (City Datum)

BM #2: Disc in Back of Curb, North of Front Corner Common to Lots 23 and 24, Block D, Auburn Hills 12th Addition. Elev. = 191.84 (City Datum)



Remove trees only as necessary for sanitary sewer construction and only with permission of Developer or Baughman Co. Cost of removal to be incidental to lump sum bid item "Site Clearing & Restoration".



Contractor to Verify Depth & Location of Existing 24" Stub Prior to Construction.

CAUTION!
 Ex. 4" SS Crossing

	AUBURN HILLS 16TH ADD. - PH. III LINE 1 STORM WATER SEWER IMPROVEMENTS	
	<small>Baughman Company, P.A. 315 Ellis St. Wichita, KS 67211 P 316-262-7271 F 316-262-0149 ENGINEERING SURVEYING PLANNING LANDSCAPE ARCHITECTURE</small>	
PROJECT NUMBER 472-84292	DESIGN AEG	DRAWN JRW
REVISIONS:	APPROVED AEG	DATE 12-05-07
SCALE Noted		20 OF 52
<small>AuburnHills16th/Phase3/STR/SWS1.dwg</small>		<small>07-09-E928</small>