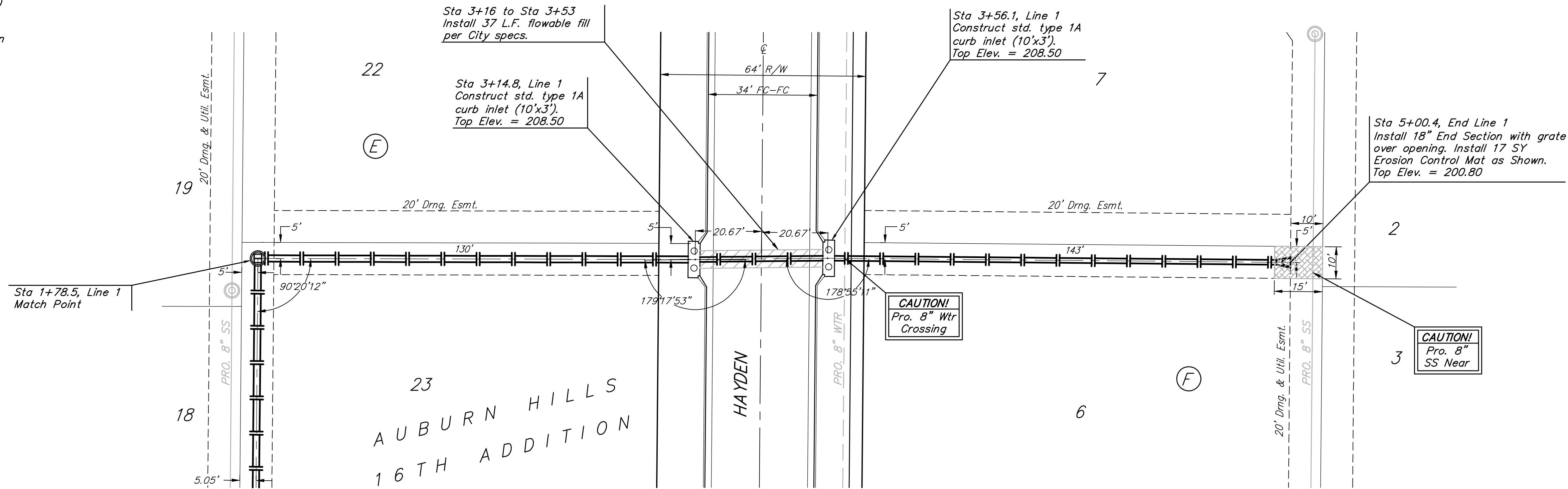


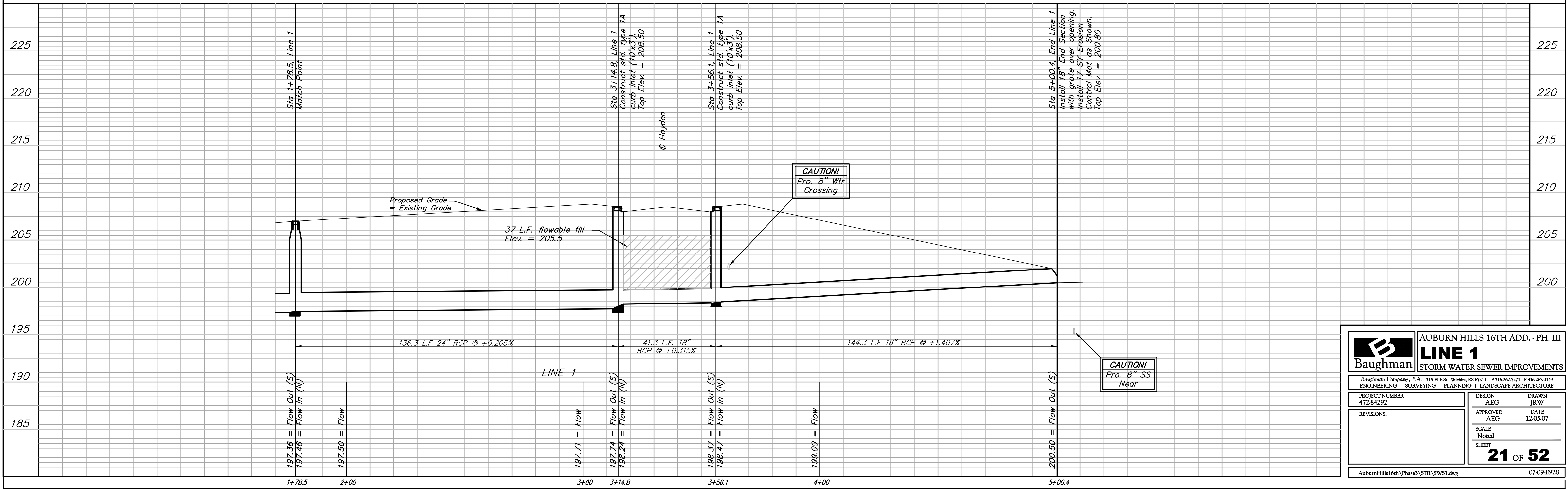
BENCHMARKS:
 BM #1: "I" Cut on Top of Curb at West Line of Lot 7, Block A, Auburn Hills 5th Addition. Elev. = 207.73 (City Datum)

BM #2: Disc in Back of Curb, North of Front Corner Common to Lots 23 and 24, Block D, Auburn Hills 12th Addition. Elev. = 191.84 (City Datum)

Scale: 1" = 20' Horizontal
 1" = 5' Vertical
 • = Iron



Remove trees only as necessary for sanitary sewer construction and only with permission of Developer or Baughman Co. Cost of removal to be incidental to lump sum bid item "Site Clearing & Restoration".



B Baughman		AUBURN HILLS 16TH ADD. - PH. III	
LINE 1		STORM WATER SEWER IMPROVEMENTS	
Baughman Company, P.A. 315 Ellis St. Wichita, KS 67211 P 316-262-7271 F 316-262-0149 ENGINEERING SURVEYING PLANNING LANDSCAPE ARCHITECTURE			
PROJECT NUMBER 472-84292	DESIGN AEG	DRAWN JRW	APPROVED AEG
REVISIONS:	DATE 12-05-07	SCALE Noted	SHEET
21 OF 52			
AuburnHills16th\Phase3\STR\SWS1.dwg			07-09-E928