

BENCHMARKS:
 BM #1: "C" Cut on Top of Curb at West Line of Lot 7, Block A, Auburn Hills 5th Addition. Elev. = 207.73 (City Datum)

BM #2: Disc in Back of Curb, North of Front Corner Common to Lots 23 and 24, Block D, Auburn Hills 12th Addition. Elev. = 191.84 (City Datum)

See Page 30 for Additional Notes

Install two construction entrances onto existing paved roadway per detail, sheet 33.

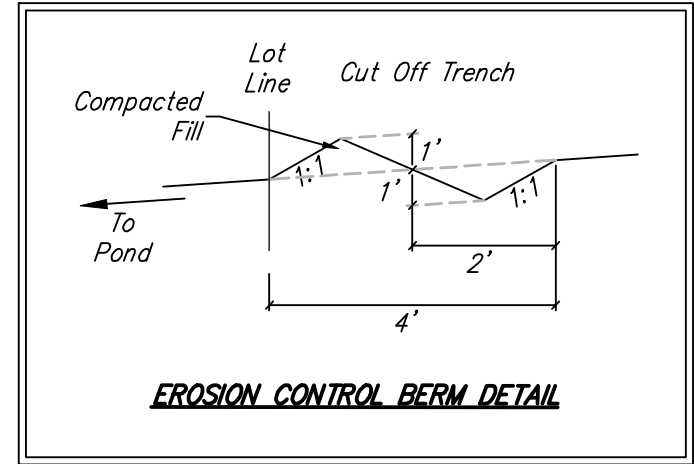
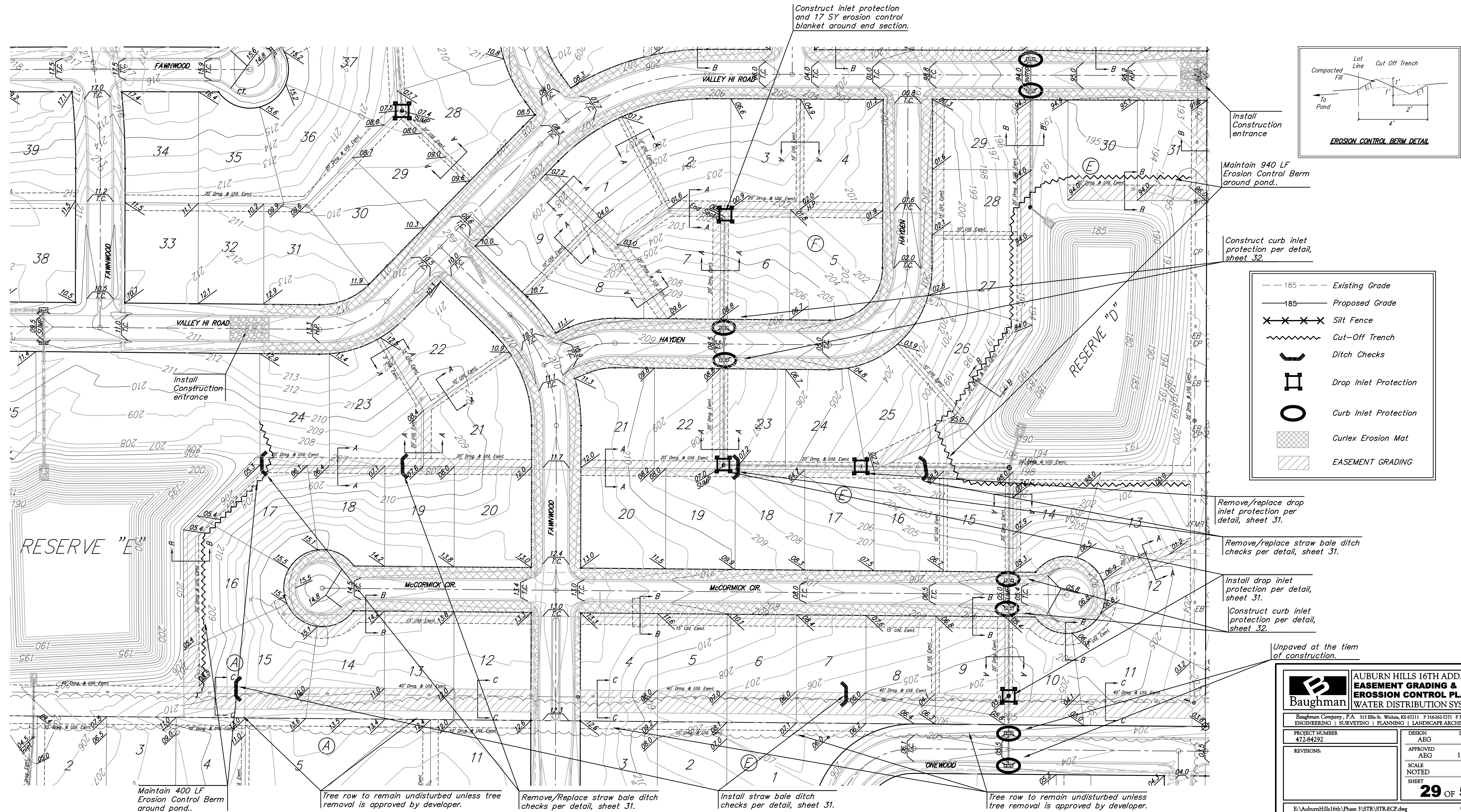
EROSION CONTROL MEASURE	UNITS	QUANTITY
Install Erosion Control Mat	S.Y.	8503
Install Drop Inlet Barrier	Ea.	6
Install Curb Inlet Barrier	Ea.	13
Install Construction Entrance	Ea.	2
Install Straw Bale Ditch Check	Ea.	4
Remove & Replace Drop Inlet Barrier	Ea.	1

Quantities are For Information Only! Contractor shall verify quantities per final bid quantity sheet.

EROSION CONTROL MEASURE	UNITS	QUANTITY
Remove & Replace Straw Bale Ditch Checks	Ea.	5
Maintain Drop Inlet Barrier	Ea.	1
Maintain Erosion Control Berm	L.F.	1340
Sediment Removal & Pipe System Flushing	L.S.	Incidental to Site Clearing

Quantities are For Information Only! Contractor shall verify quantities per final bid quantity sheet.

Scale: 1" = 60'



- 185 --- Existing Grade
- 185 — Proposed Grade
- × × × × Silt Fence
- ~ ~ ~ ~ Cut-Off Trench
- U U U U Ditch Checks
- □ □ □ Drop Inlet Protection
- ○ ○ ○ Curb Inlet Protection
- ▨ ▨ ▨ ▨ Curlex Erosion Mat
- ▨ ▨ ▨ ▨ EASEMENT GRADING

Maintain 400 LF Erosion Control Berm around pond..

Tree row to remain undisturbed unless tree removal is approved by developer.

Remove/Replace straw bale ditch checks per detail, sheet 31.

Install straw bale ditch checks per detail, sheet 31.

Tree row to remain undisturbed unless tree removal is approved by developer.

Install Construction entrance

Maintain 940 LF Erosion Control Berm around pond..

Construct curb inlet protection per detail, sheet 32.

Remove/replace drop inlet protection per detail, sheet 31.

Remove/replace straw bale ditch checks per detail, sheet 31.

Install drop inlet protection per detail, sheet 31.

Construct curb inlet protection per detail, sheet 32.

Unpaved at the time of construction.

Baughman

Baughman Company, P.A. 315 Ellis St. Wichita, KS 67211 P 316-362-7771 F 316-363-0149
ENGINEERING | SURVEYING | PLANNING | LANDSCAPE ARCHITECTURE

**AUBURN HILLS 16TH ADD. - PH. III
EASEMENT GRADING &
EROSION CONTROL PLAN
WATER DISTRIBUTION SYSTEM**

<small>PROJECT NUMBER 472-84292</small>	<small>DESIGN AEG</small>
<small>REVISIONS:</small>	<small>DRAWN JRW</small>
	<small>APPROVED AEG</small>
	<small>DATE 12-05-07</small>
	<small>SCALE NOTED</small>
	<small>SHEET</small>

29 OF 52

E:\AuburnHills16th\Phase 3\STR\STR-ECP.dwg 07-09-E928