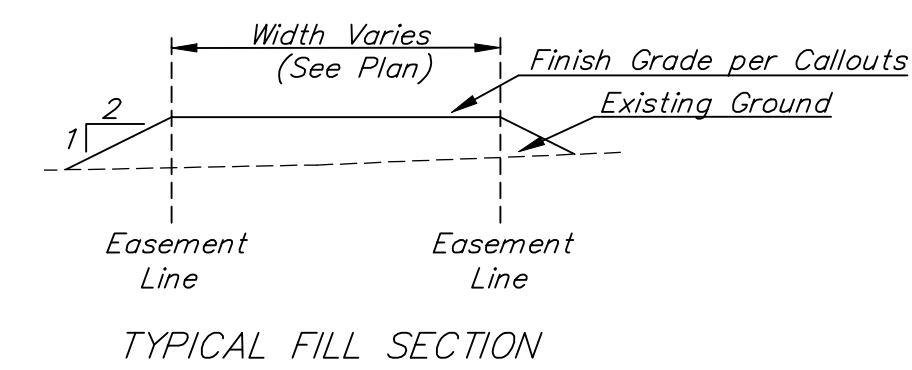
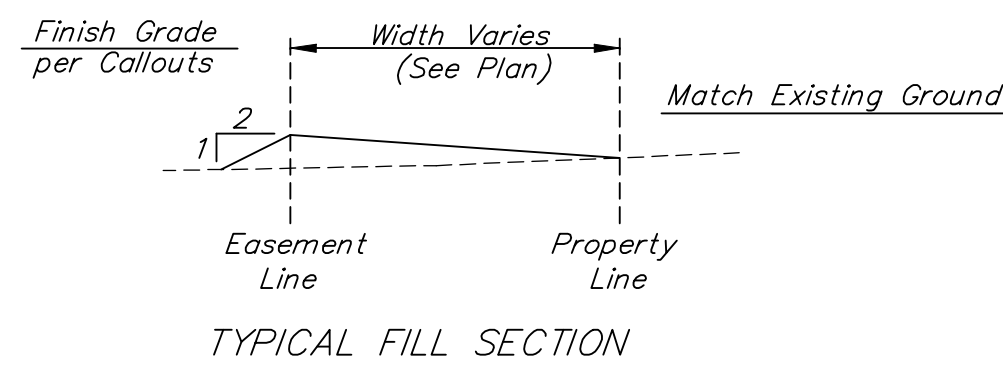


BENCHMARKS:
 BM #1: "I" Cut on Top of Curb at West Line of Lot 7, Block A, Auburn Hills 5th Addition. Elev. = 207.73 (City Datum)

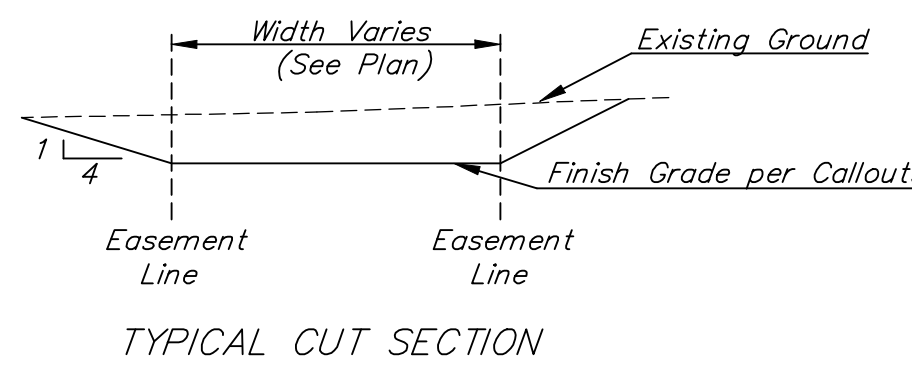
BM #2: Disc in Back of Curb, North of Front Corner Common to Lots 23 and 24, Block D, Auburn Hills 12th Addition. Elev. = 191.84 (City Datum)



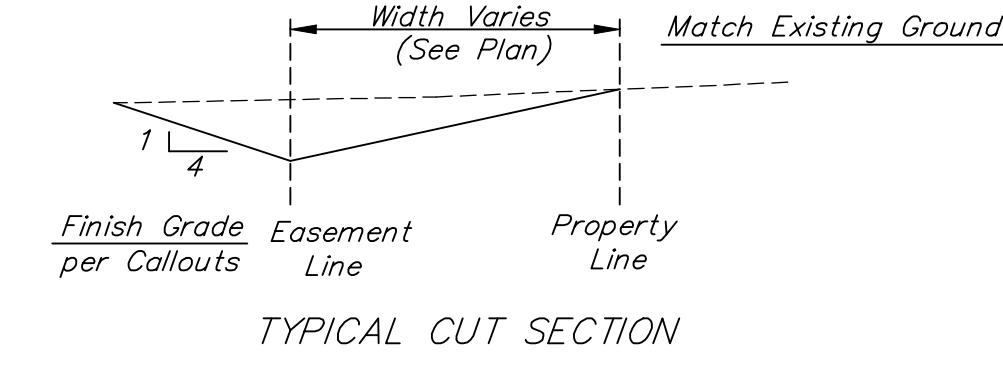
TYPICAL FILL SECTION



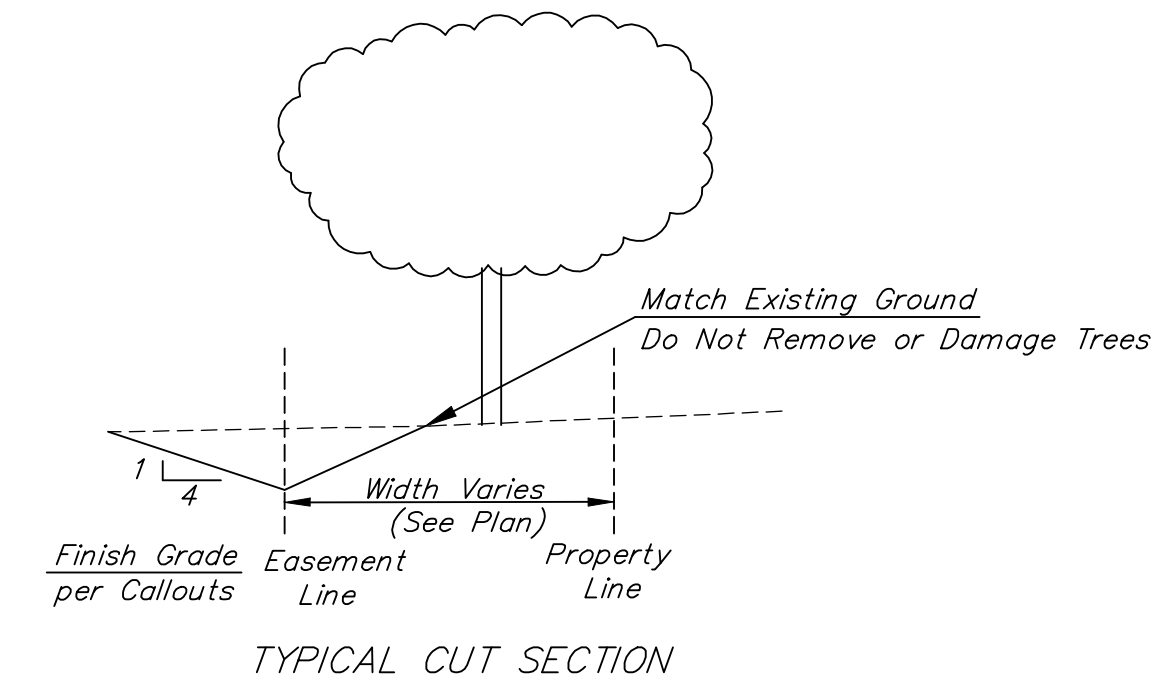
TYPICAL FILL SECTION



TYPICAL CUT SECTION



TYPICAL CUT SECTION



TYPICAL CUT SECTION

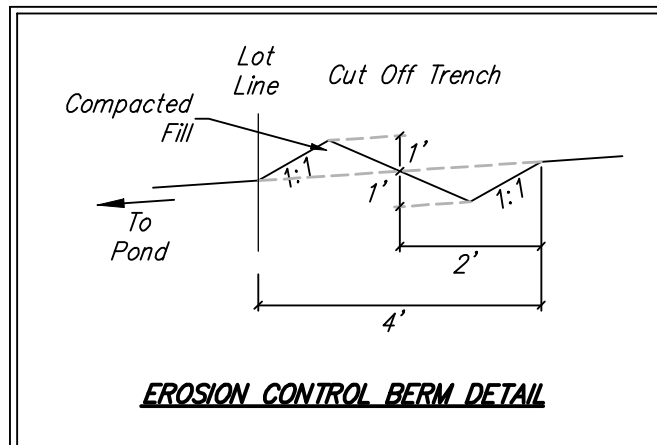
SECTION A-A

SECTION B-B

SECTION C-C

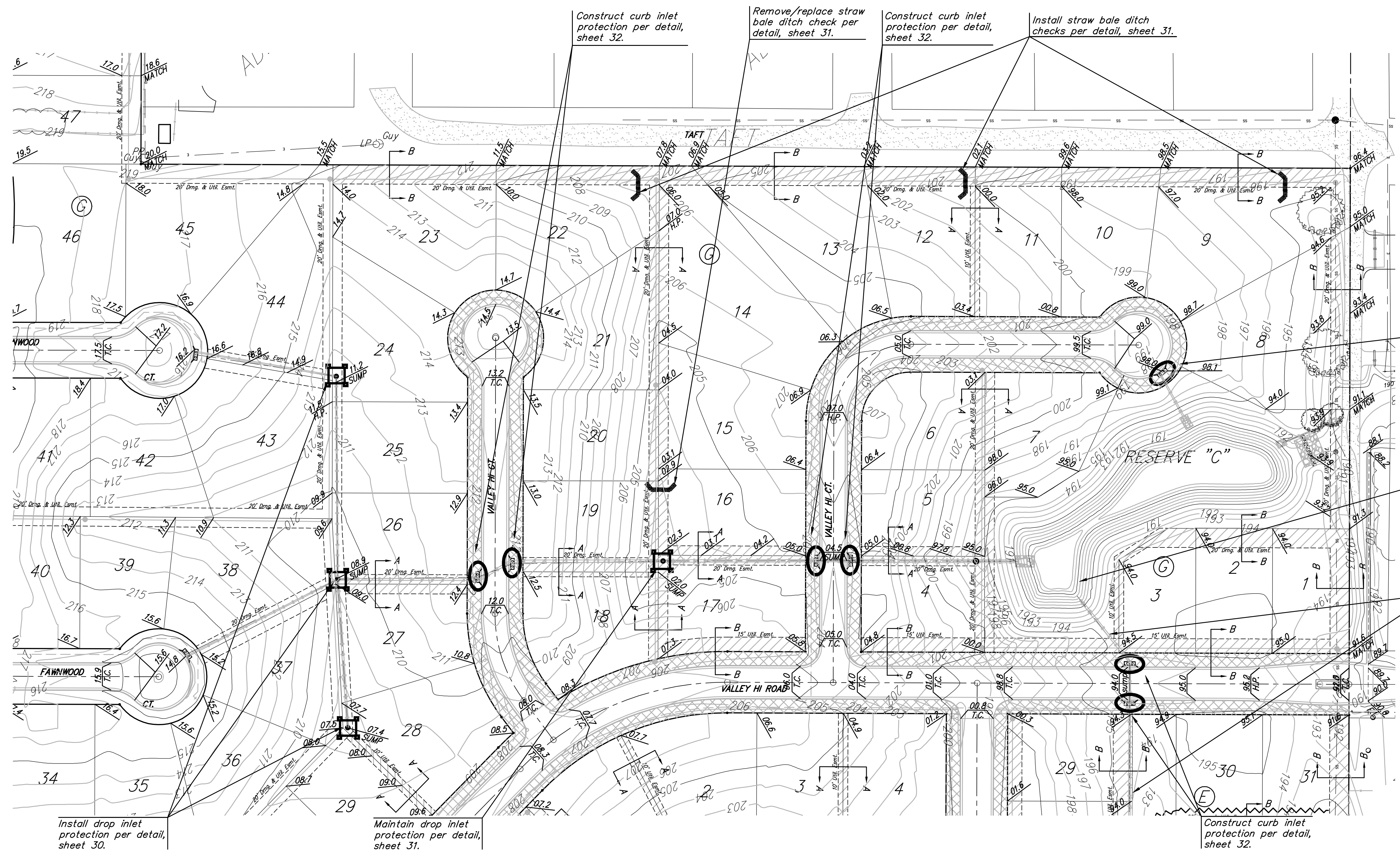
Easements have been rough graded with mass grading. Contractor shall fine grade the easements as shown to within ±0.2' of the elevations given on plan. The contractor shall "straight" grade the easements between the elevations given. Where a callout designates "Match," the contractor will grade to the existing ground elevation. All costs for easement grading shall be included in lump sum bid item "Easement Grading."

Scale: 1" = 60'



EROSION CONTROL BERM DETAIL

Install two construction entrances onto existing paved roadway per detail, sheet 33.



Construct curb inlet protection per detail, sheet 32.

Contractor shall remove sediment build-up around end section as shown. Cost to be incidental to "Site Clearing & Rest."

Contractor shall flush pipe system and inlets/manholes to remove sediment buildup in pipe system (315 LF). Cost to be included in bid item, "Clearing & Rest."

Install drop inlet protection per detail, sheet 30.

Maintain drop inlet protection per detail, sheet 31.

Construct curb inlet protection per detail, sheet 32.

XX.X	Proposed Spot Grade
---	Existing Grade
---	Proposed Grade
X X X X	Silt Fence
~~~~~	Cut-Off Trench
U	Ditch Checks
H	Drop Inlet Protection
O	Curb Inlet Protection
[Cross-hatched]	Curlex Erosion Mat
[Diagonal lines]	Easements To Be Graded

<b>Baughman</b>		<b>AUBURN HILLS 16TH ADD. - PH. III EASEMENT GRADING &amp; EROSION CONTROL PLAN WATER DISTRIBUTION SYSTEM</b>	
Baughman Company, P.A. 315 Ellis St. Wichita, KS 67211 F 316-262-7771 F 316-262-0149 ENGINEERING   SURVEYING   PLANNING   LANDSCAPE ARCHITECTURE			
PROJECT NUMBER 472-84292	DESIGN AEG	DRAWN JRW	DATE 12-05-07
REVISIONS:	APPROVED AEG	SCALE NOTED	SHEET 30 OF 52
E:\AuburnHills16th\Phase 3\STR\STR-ECP.dwg		07-09-E928	