

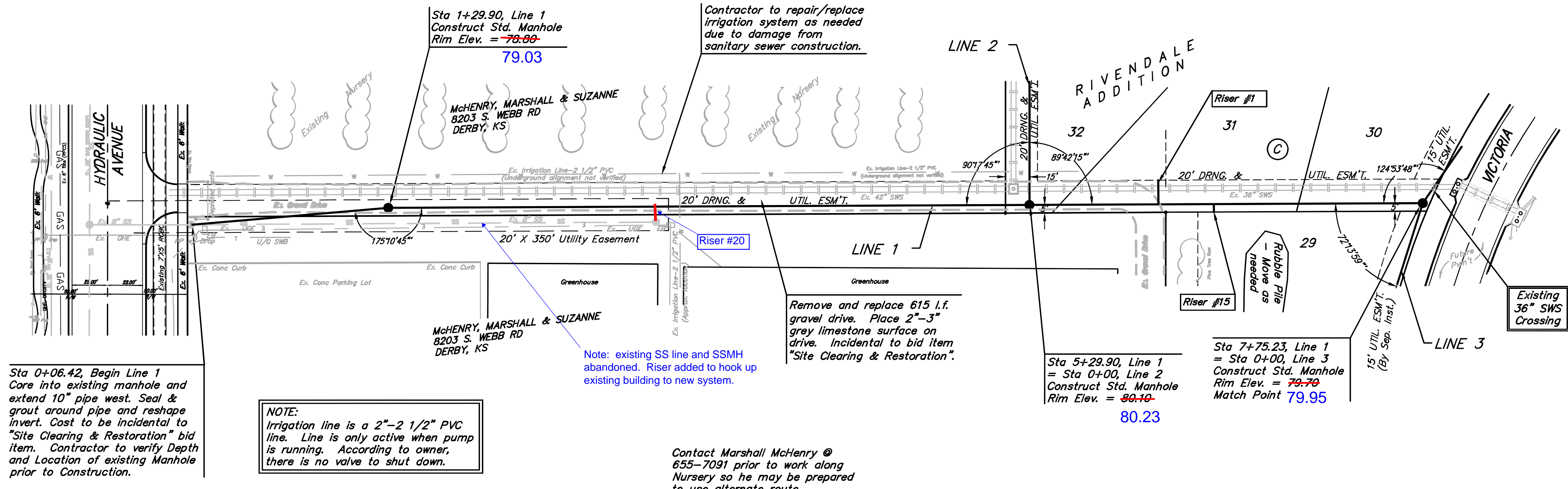
Benchmark:
 City of Wichita Benchmark Disc,
 Hydraulic and 55th Street South,
 42.00' North of Centerline, 40.70'
 West of Centerline, 3.70' North of
 centerline of Power Pole, 58.20'
 Northwest of Southeast Corner, Sec.
 21, Twp. 28-S, R-1-E.
 Elev. = 76.19 City Datum
 Elev. = 1263.59 (NGVD29)

SEWER SERVICE TABLE

NUMBER	TYPE	LOCATION			FOR INFORMATION ONLY		
		LOT NO.	BLOCK NO.	LINE NO.	STATION/DIRECTION	APPROXIMATE LENGTH 4" PIPE	
1	10" X 4" Tee Saddle	31	C	1	6+10/Lt.	14'	15'
15	10" X 4" Tee Saddle	29	C	1	6+45/Rt.	14'	5'
20	10" X 4" Tee Saddle	UP Tract		1	2+95/Rt.	14'	5'



Scale:
 1" = 40' Horizontal
 1" = 5' Vertical
 • = Iron

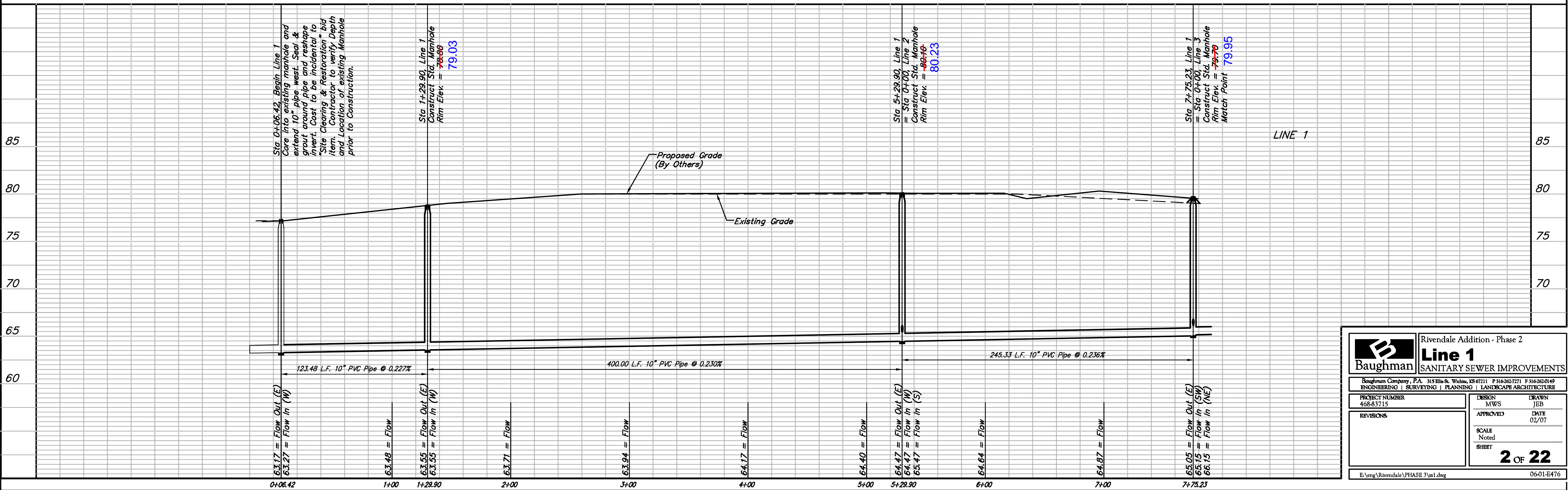


Sta 0+06.42, Begin Line 1
 Core into existing manhole and
 extend 10" pipe west. Seal &
 grout around pipe and reshape
 invert. Cost to be incidental to
 "Site Clearing & Restoration" bid
 item. Contractor to verify Depth
 and Location of existing Manhole
 prior to Construction.

NOTE:
 Irrigation line is a 2"-2 1/2" PVC
 line. Line is only active when pump
 is running. According to owner,
 there is no valve to shut down.

Contact Marshall McHenry @
 655-7091 prior to work along
 Nursery so he may be prepared
 to use alternate route.

Denotes Trees to be
 Trimmed or Removed by
 the Sanitary Sewer Contractor



Baughman Rivendale Addition - Phase 2
Line 1
 SANITARY SEWER IMPROVEMENTS

Baughman Company, P.A. 315 Ellis St. Wichita, KS 67211 P 316-262-7271 F 316-262-0149
 ENGINEERING | SURVEYING | PLANNING | LANDSCAPE ARCHITECTURE

PROJECT NUMBER 468-83715	DESIGN MWS	DRAWN JEB
REVISIONS	APPROVED	DATE 02/07
	SCALE Noted	SHEET

2 OF 22

E:\eng\Rivendale\PHASE 3\ss1.dwg 06-01-E476