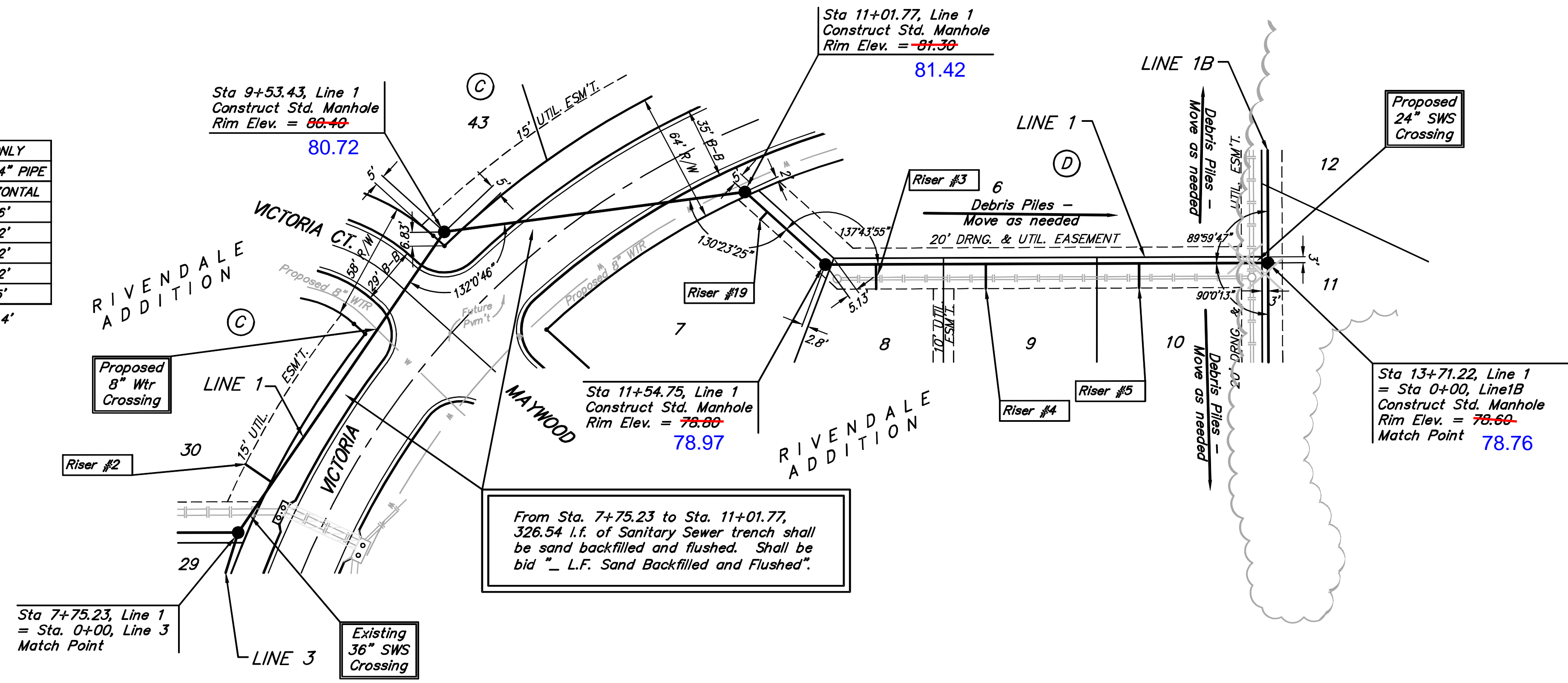


Benchmark:
 City of Wichita Benchmark Disc,
 Hydraulic and 55th Street South,
 42.00' North of Centerline, 40.70'
 West of Centerline, 3.70' North of
 centerline of Power Pole, 58.20'
 Northwest of Southeast Corner, Sec.
 21, Twp. 28-S, R-1-E.
 Elev. = 76.19 City Datum
 Elev. = 1263.59 (NGVD29)

SEWER SERVICE TABLE

NUMBER	TYPE	LOCATION			FOR INFORMATION ONLY	
		LOT NO.	BLOCK NO.	LINE NO.	STATION/DIRECTION	APPROXIMATE LENGTH 4" PIPE
2	10" X 4" Tee Saddle	30	C	1	8+05/Lt.	13' 16'
3	10" X 4" Tee Saddle	8	D	1	11+79/Rt.	12' 12'
4	10" X 4" Tee Saddle	9	D	1	12+33/Rt.	12' 12'
5	10" X 4" Tee Saddle	10	D	1	13+08/Rt.	12' 12'
19	10" X 4" Tee Saddle	7	D	1	11+16/Rt.	13' 5'

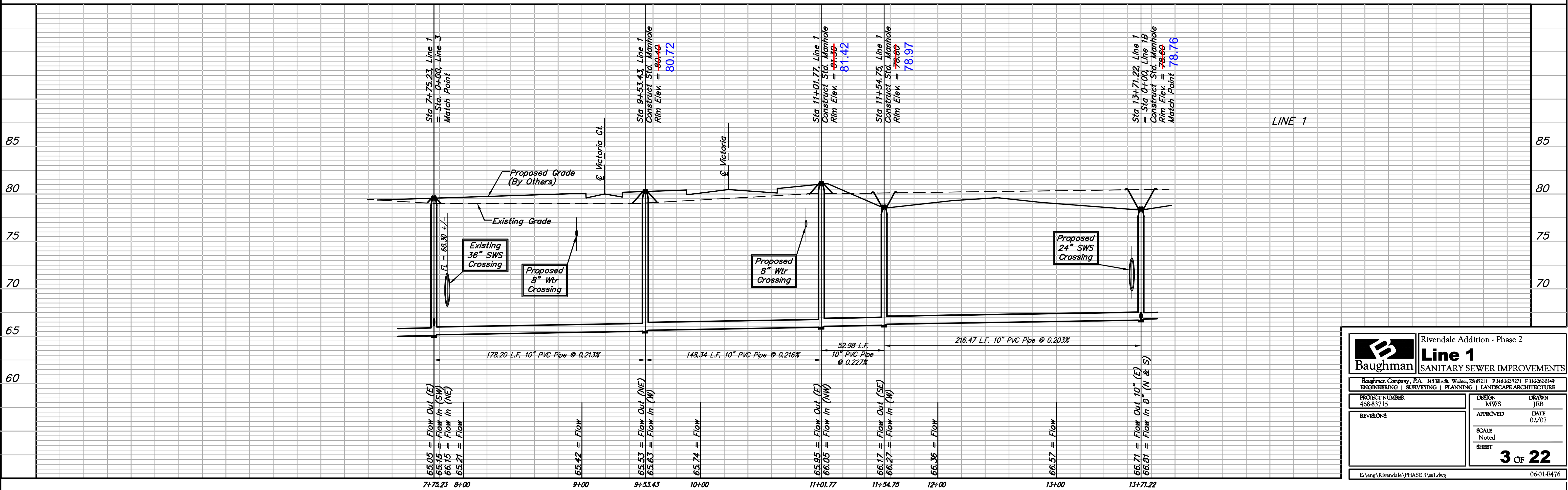
NOTE: Vertical Riser Pipe shall be extended to 2' minimum above ground water elevation and 4' maximum below proposed ground elevation.



From Sta. 7+75.23 to Sta. 11+01.77,
 326.54 l.f. of Sanitary Sewer trench shall
 be sand backfilled and flushed. Shall be
 bid "L.F. Sand Backfilled and Flushed".

Denotes Trees to be
 Trimmed or Removed by
 the Sanitary Sewer Contractor

Scale:
 1" = 40' Horizontal
 1" = 5' Vertical
 • = Iron



Baughman Rivendale Addition - Phase 2
Line 1
 SANITARY SEWER IMPROVEMENTS

Baughman Company, P.A. 315 Ellis St. Wichita, KS 67211 P 316-262-7271 F 316-262-0149
 ENGINEERING | SURVEYING | PLANNING | LANDSCAPE ARCHITECTURE

PROJECT NUMBER 468-83715	DESIGN MWS	DRAWN JEB
REVISIONS	APPROVED	DATE 02/07
	SCALE Noted	SHEET

3 OF 22

E:\eng\Rivendale\PHASE 3\ss1.dwg 06-01-E476