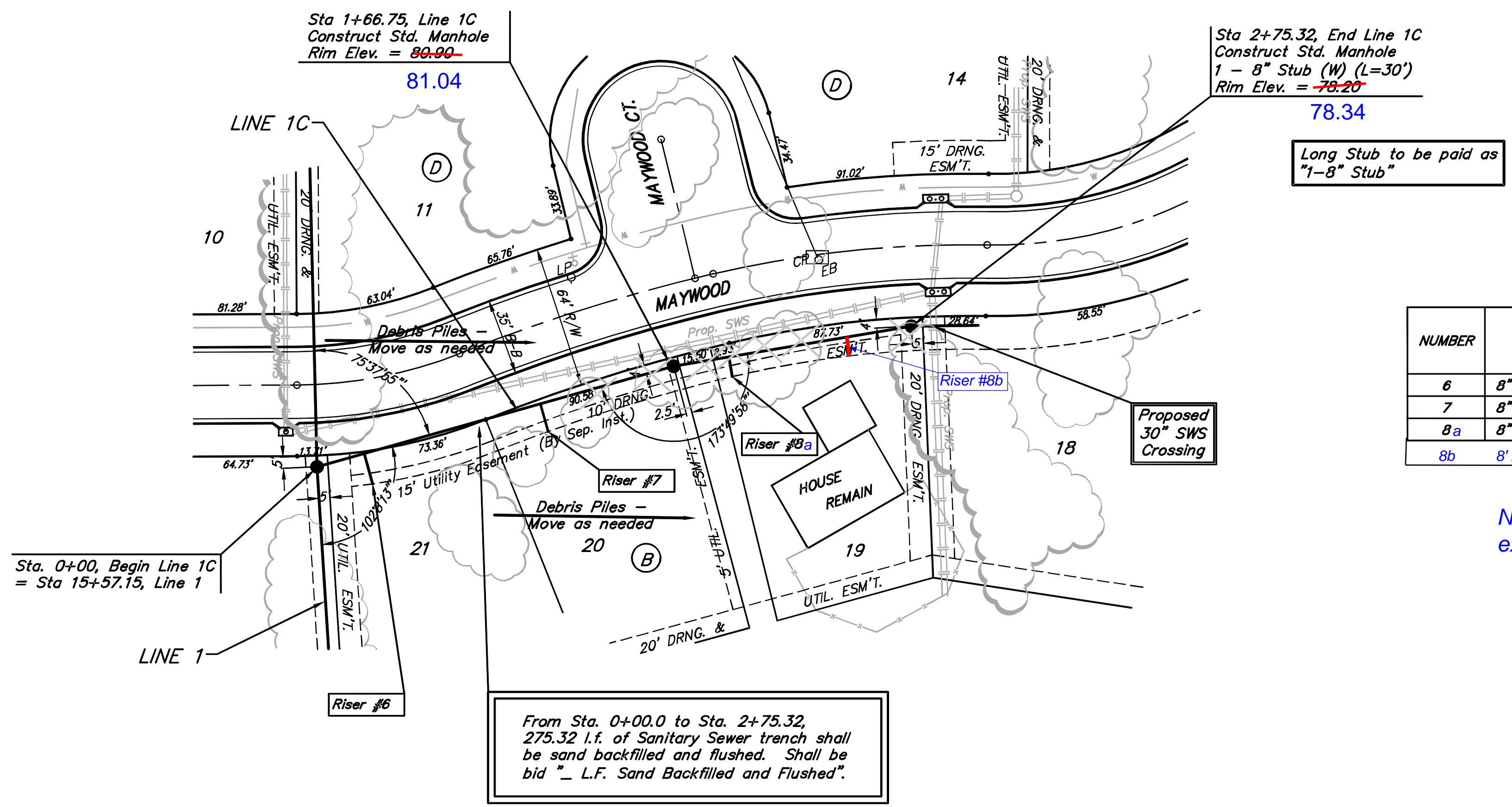


Benchmark:
 City of Wichita Benchmark Disc,
 Hydraulic and 55th Street South,
 42.00' North of Centerline, 40.70'
 West of Centerline, 3.70' North of
 centerline of Power Pole, 58.20'
 Northwest of Southeast Corner, Sec.
 21, Twp. 28-S, R-1-E.
 Elev. = 76.19 City Datum
 Elev. = 1263.59 (NGVD29)

Scale:
 1" = 40' Horizontal
 1" = 5' Vertical
 • = Iron



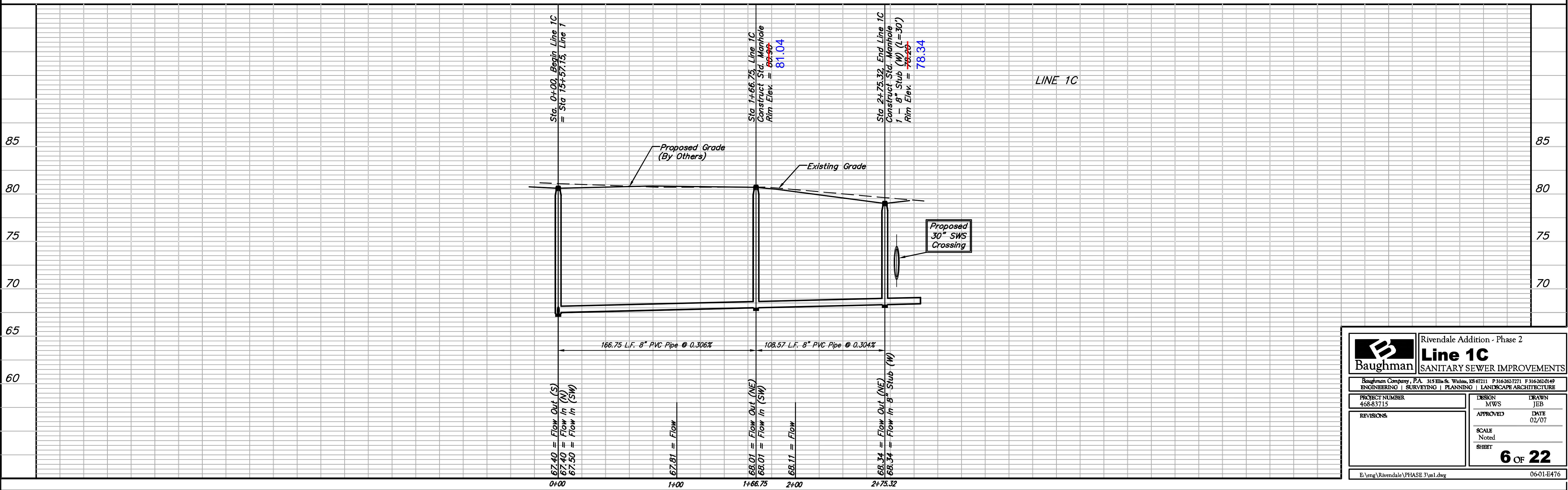
SEWER SERVICE TABLE

NUMBER	TYPE	LOCATION			FOR INFORMATION ONLY	
		LOT NO.	BLOCK NO.	LINE NO.	STATION/DIRECTION	APPROXIMATE LENGTH 4" PIPE
6	8" X 4" Tee Saddle	21	B	1C	0+22/Rt.	12' 14'
7	8" X 4" Tee Saddle	20	B	1C	1+04/Rt.	12' 13'
8a	8" X 4" Tee Saddle	19	B	1C	1+92/Rt.	10' 9'
8b	8" X 4" Tee Saddle	19	B	1C	2+45.32/Rt.	10' 5'

Note: Additional riser added to serve Lot 19 to accommodate existing sewer system at house.

From Sta. 0+00.0 to Sta. 2+75.32,
 275.32 l.f. of Sanitary Sewer trench shall
 be sand backfilled and flushed. Shall be
 bid "L.F. Sand Backfilled and Flushed".

⊗ Denotes Trees to be
 Trimmed or Removed by
 the Sanitary Sewer Contractor



	Rivendale Addition - Phase 2	
	Line 1C SANITARY SEWER IMPROVEMENTS	
<small>Baughman Company, P.A. 315 Ellis St. Wichita, KS 67211 P 316-262-7271 F 316-262-0149 ENGINEERING SURVEYING PLANNING LANDSCAPE ARCHITECTURE</small>		
PROJECT NUMBER 468-83715	DESIGN MWS	DRAWN JEB
REVISIONS	APPROVED	DATE 02/07
SCALE Noted		SHEET 6 OF 22
<small>E:\eng\Rivendale\PHASE 3\ss1.dwg</small>		<small>06-01-E476</small>