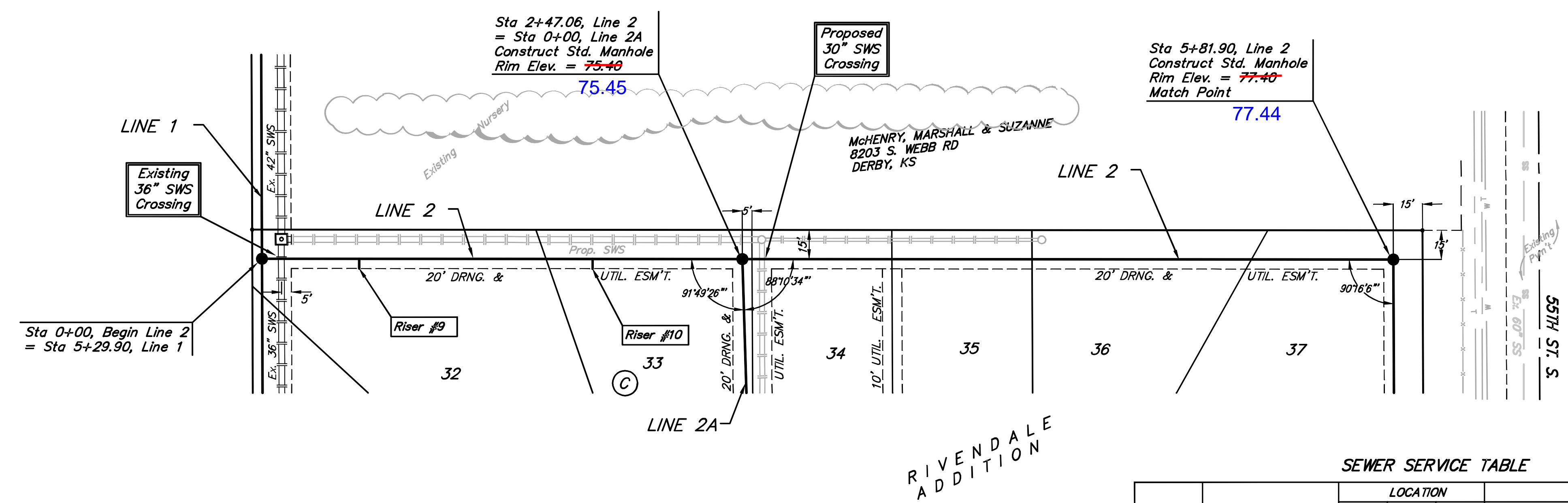


Benchmark:
 City of Wichita Benchmark Disc,
 Hydraulic and 55th Street South,
 42.00' North of Centerline, 40.70'
 West of Centerline, 3.70' North of
 centerline of Power Pole, 58.20'
 Northwest of Southeast Corner, Sec.
 21, Twp. 28-S, R-1-E.
 Elev. = 76.19 City Datum
 Elev. = 1263.59 (NGVD29)



Scale:
 1" = 40' Horizontal
 1" = 5' Vertical
 • = Iron

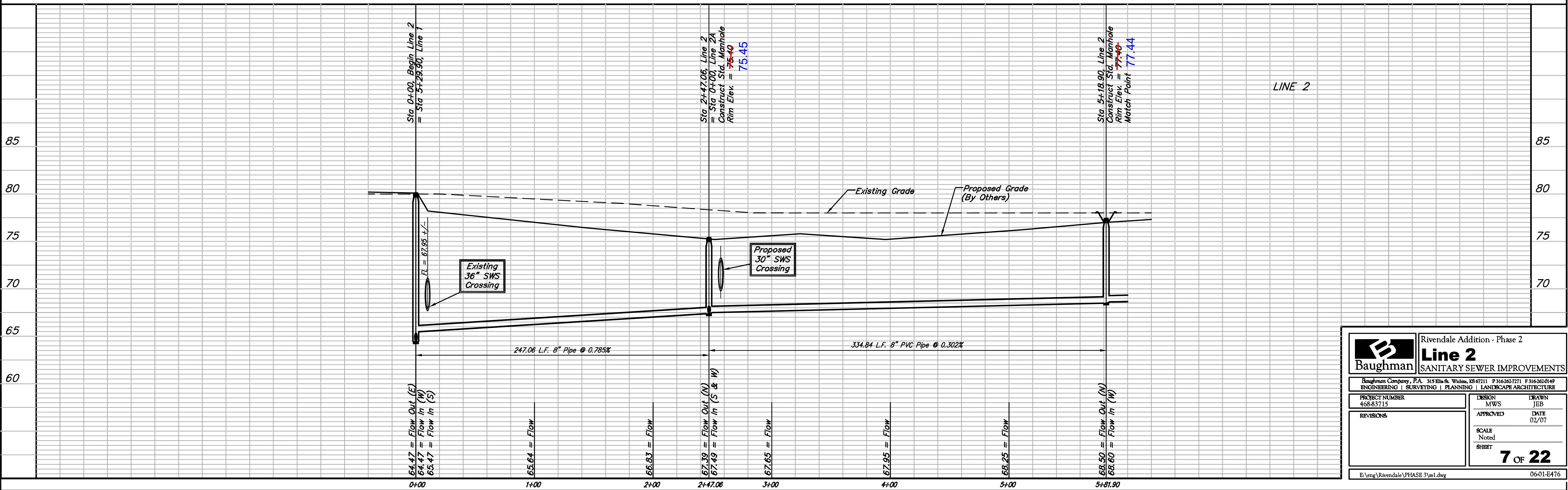


SEWER SERVICE TABLE

NUMBER	TYPE	LOCATION			FOR INFORMATION ONLY		
		LOT NO.	BLOCK NO.	LINE NO.	STATION/DIRECTION	APPROXIMATE LENGTH 4" PIPE	
					VERTICAL	HORIZONTAL	
9	8" X 4" Tee Saddle	32	C	2	0+50/Rt.	11'	5'
10	8" X 4" Tee Saddle	33	C	2	1+70/Rt.	9'	5'

NOTE: Vertical Riser Pipe shall be extended to 2' minimum above ground water elevation and 4' maximum below proposed ground elevation.

Denotes Trees to be Trimmed or Removed by the Sanitary Sewer Contractor



	Rivendale Addition - Phase 2	
	Line 2	
SANITARY SEWER IMPROVEMENTS		
<small>Baughman Company, P.A. 315 Ellis St. Wichita, KS 67211 P 316-262-7271 F 316-262-0149 ENGINEERING SURVEYING PLANNING LANDSCAPE ARCHITECTURE</small>		
PROJECT NUMBER 468-83715	DESIGN MWS	DRAWN JEB
REVISIONS	APPROVED	DATE 02/07
SCALE Noted		SHEET 7 OF 22
<small>E:\eng\Rivendale\PHASE 3\ss1.dwg</small>		<small>06-01-E476</small>