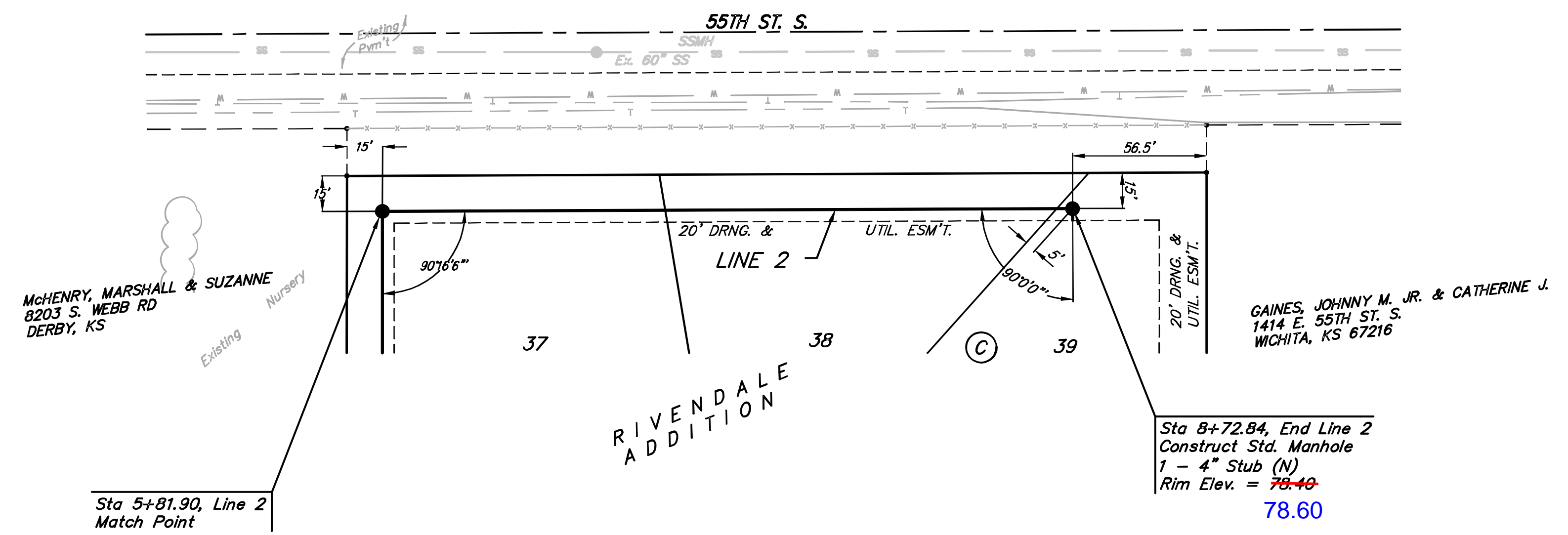
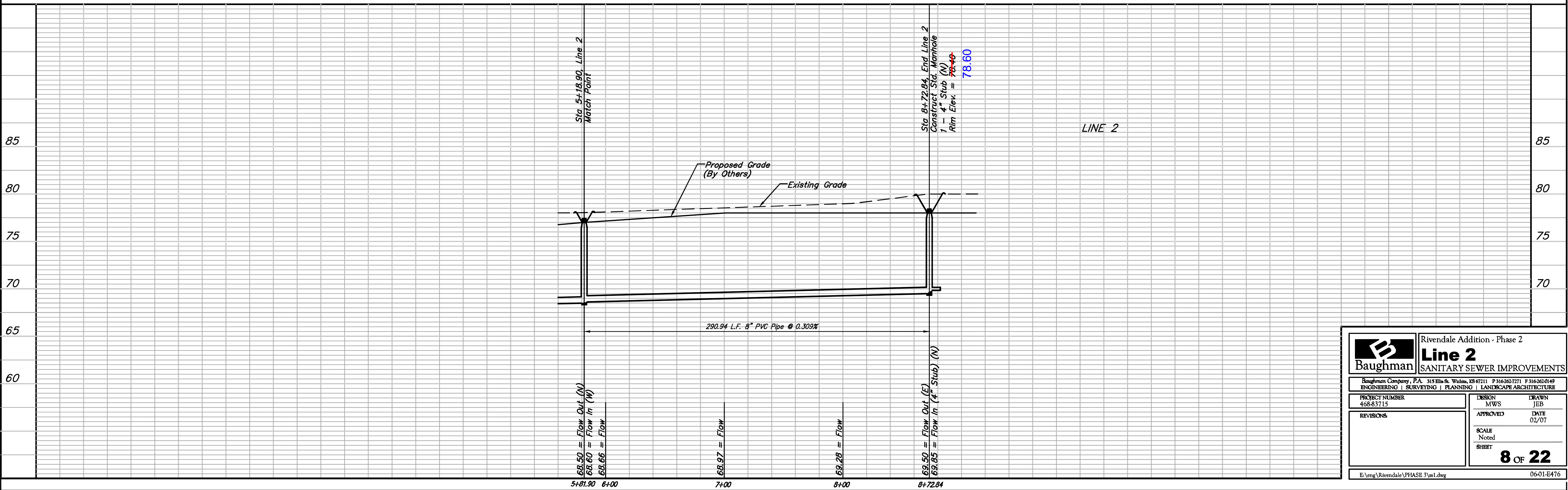


**Benchmark:**  
 City of Wichita Benchmark Disc,  
 Hydraulic and 55th Street South,  
 42.00' North of Centerline, 40.70'  
 West of Centerline, 3.70' North  
 of centerline of Power Pole, 58.20'  
 Northwest of Southeast Corner, Sec.  
 21, Twp. 28-S, R-1-E.  
 Elev. = 76.19 City Datum  
 Elev. = 1263.59 (NGVD29)

Scale:  
 1" = 40' Horizontal  
 1" = 5' Vertical  
 • = Iron



⊗ Denotes Trees to be  
 Trimmed or Removed by  
 the Sanitary Sewer Contractor



<b>Baughman</b>		Rivendale Addition - Phase 2	
		<b>Line 2</b>	
		SANITARY SEWER IMPROVEMENTS	
Baughman Company, P.A. 315 Ellis St. Wichita, KS 67211 P 316-262-7271 F 316-262-0149 ENGINEERING   SURVEYING   PLANNING   LANDSCAPE ARCHITECTURE			
PROJECT NUMBER 468-83715	DESIGN MWS	DRAWN JEB	
REVISIONS	APPROVED	DATE 02/07	
	SCALE Noted	SHEET	
			<b>8 OF 22</b>
E:\eng\Rivendale\PHASE 3\ss1.dwg			06-01-E476