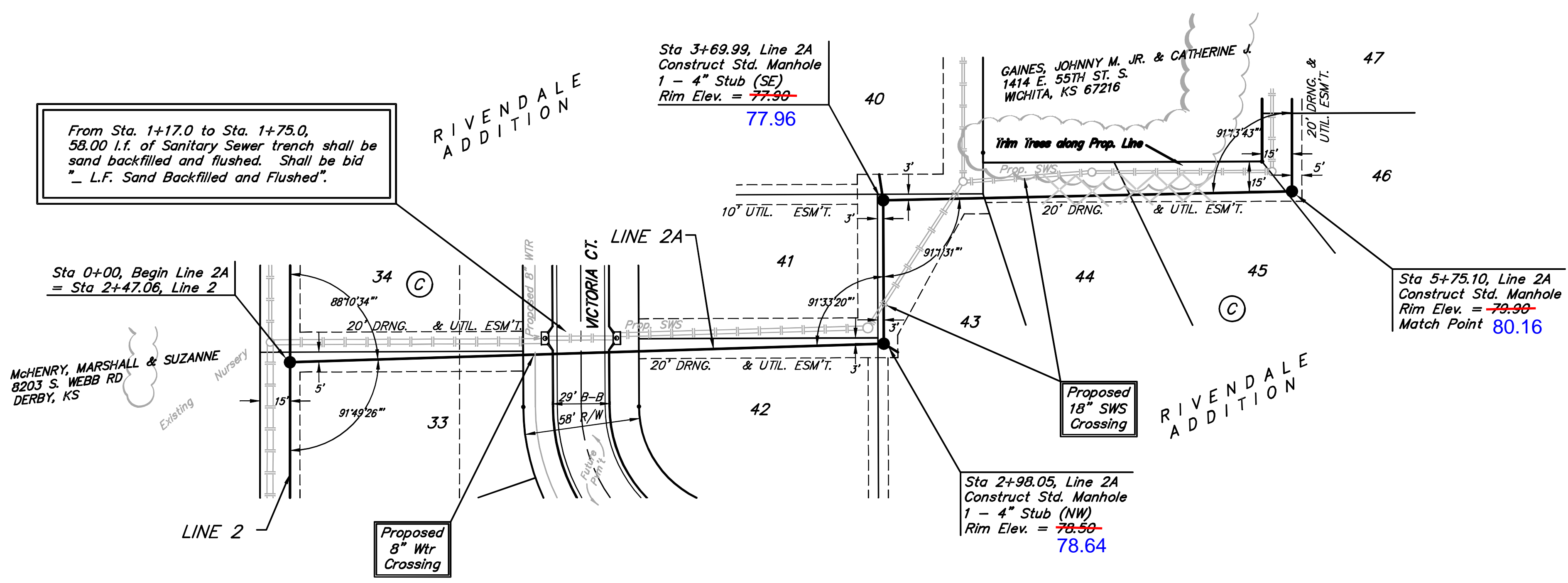
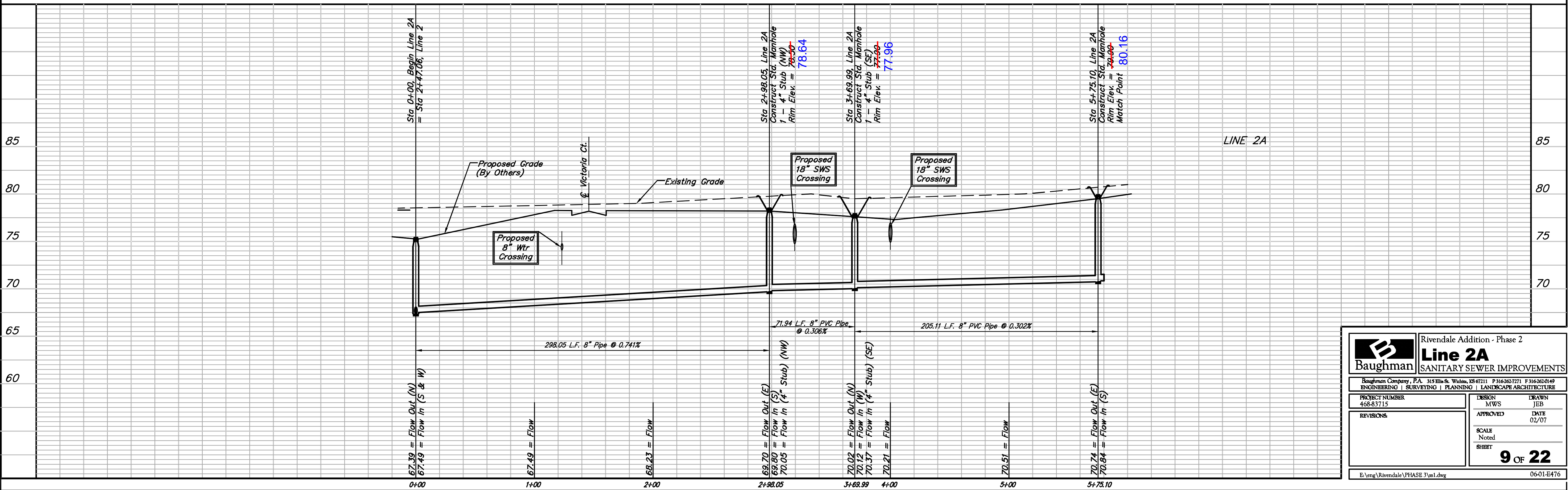


**Benchmark:**  
 City of Wichita Benchmark Disc,  
 Hydraulic and 55th Street South,  
 42.00' North of Centerline, 40.70'  
 West of Centerline, 3.70' North of  
 centerline of Power Pole, 58.20'  
 Northwest of Southeast Corner, Sec.  
 21, Twp. 28-S, R-1-E.  
 Elev. = 76.19 City Datum  
 Elev. = 1263.59 (NGVD29)



Scale:  
 1" = 40' Horizontal  
 1" = 5' Vertical  
 • = Iron

⊗ Denotes Trees to be  
 Trimmed or Removed by  
 the Sanitary Sewer Contractor



		Rivendale Addition - Phase 2 <b>Line 2A</b> SANITARY SEWER IMPROVEMENTS	
<small>Baughman Company, P.A. 315 Ellis St. Wichita, KS 67211 P 316-262-7271 F 316-262-0149          ENGINEERING   SURVEYING   PLANNING   LANDSCAPE ARCHITECTURE</small>			
PROJECT NUMBER 468-83715	DESIGN MWS	DRAWN JEB	SCALE Noted SHEET
REVISIONS	APPROVED	DATE 02/07	<b>9 OF 22</b>
<small>E:\eng\Rivendale\PHASE 3\ss1.dwg</small>			<small>06-01-E476</small>