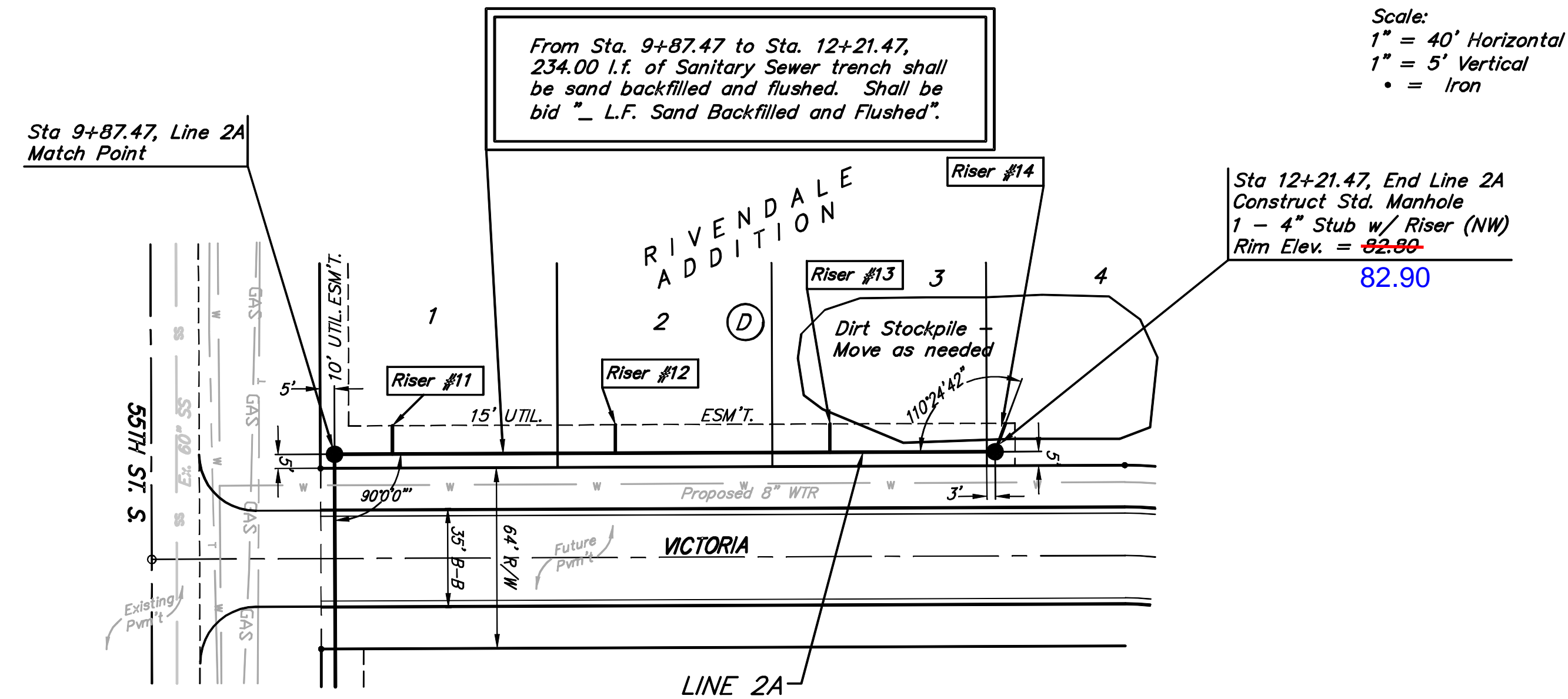
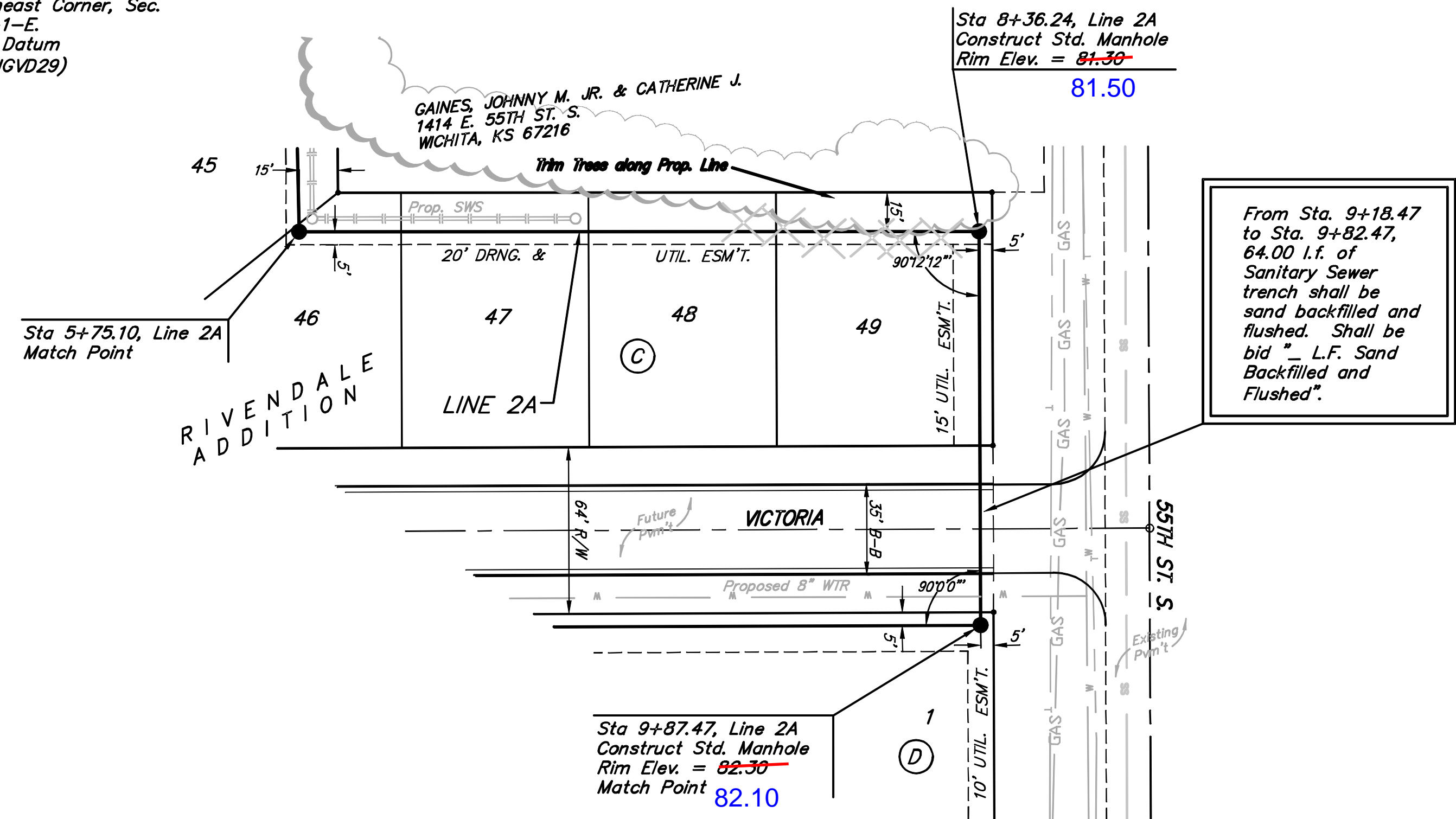


Benchmark:
 City of Wichita Benchmark Disc,
 Hydraulic and 55th Street South,
 42.00' North of Centerline, 40.70'
 West of Centerline, 3.70' North of
 centerline of Power Pole, 58.20'
 Northwest of Southeast Corner, Sec.
 21, Twp. 28-S, R-1-E.
 Elev. = 76.19 City Datum
 Elev. = 1263.59 (NGVD29)



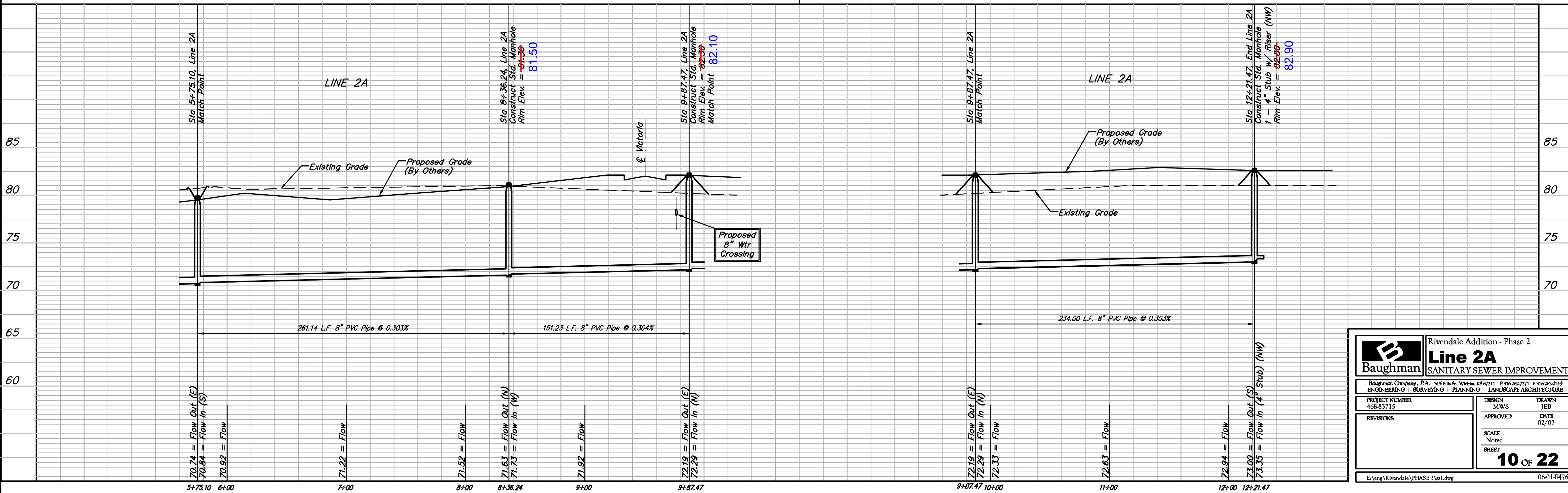
Scale:
 1" = 40' Horizontal
 1" = 5' Vertical
 • = Iron

SEWER SERVICE TABLE

NUMBER	TYPE	LOCATION			FOR INFORMATION ONLY	
		LOT NO.	BLOCK NO.	LINE NO. STATION/ DIRECTION	APPROXIMATE LENGTH 4" PIPE VERTICAL	HORIZONTAL
11	8" X 4" Tee Saddle	1	D	2A 10+08/Lt.	8'	10'
12	8" X 4" Tee Saddle	2	D	2A 10+87/Lt.	8'	10'
13	8" X 4" Tee Saddle	3	D	2A 11+63/Lt.	8'	10'
14	4" Stub w/Riser	4	D	2A 12+21.47/Lt.	7'	11'

NOTE: Vertical Riser Pipe shall be extended to 2' minimum above ground water elevation and 4' maximum below proposed grade elevation.

Denotes Trees to be Trimmed or Removed by the Sanitary Sewer Contractor



Rivendale Addition - Phase 2

Baughman **Line 2A**
 SANITARY SEWER IMPROVEMENTS

Baughman Company, P.A. 315 Ellis St. Wichita, KS 67211 P 316-262-7271 F 316-262-0149
 ENGINEERING | SURVEYING | PLANNING | LANDSCAPE ARCHITECTURE

PROJECT NUMBER 468-83715	DESIGN MWS	DRAWN JEB
REVISIONS	APPROVED	DATE 02/07
SCALE Noted		SHEET 10 OF 22

E:\eng\Rivendale\PHASE 3\ss1.dwg 06-01-E476