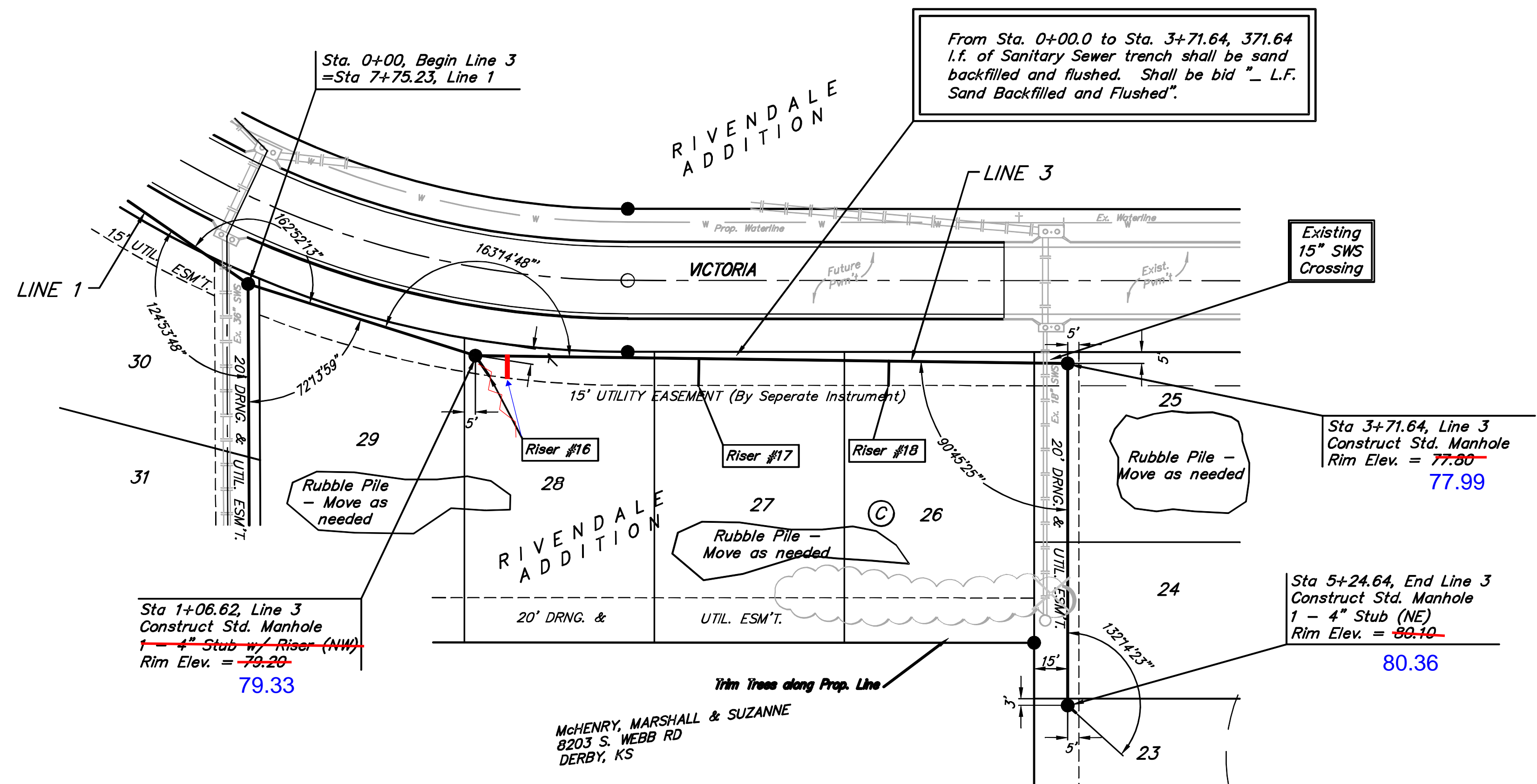


**Benchmark:**  
 City of Wichita Benchmark Disc,  
 Hydraulic and 55th Street South,  
 42.00' North of Centerline, 40.70'  
 West of Centerline, 3.70' North of  
 centerline of Power Pole, 58.20'  
 Northwest of Southeast Corner, Sec.  
 21, Twp. 28-S, R-1-E.  
 Elev. = 76.19 City Datum  
 Elev. = 1263.59 (NGVD29)



Scale:  
 1" = 40' Horizontal  
 1" = 5' Vertical  
 • = Iron

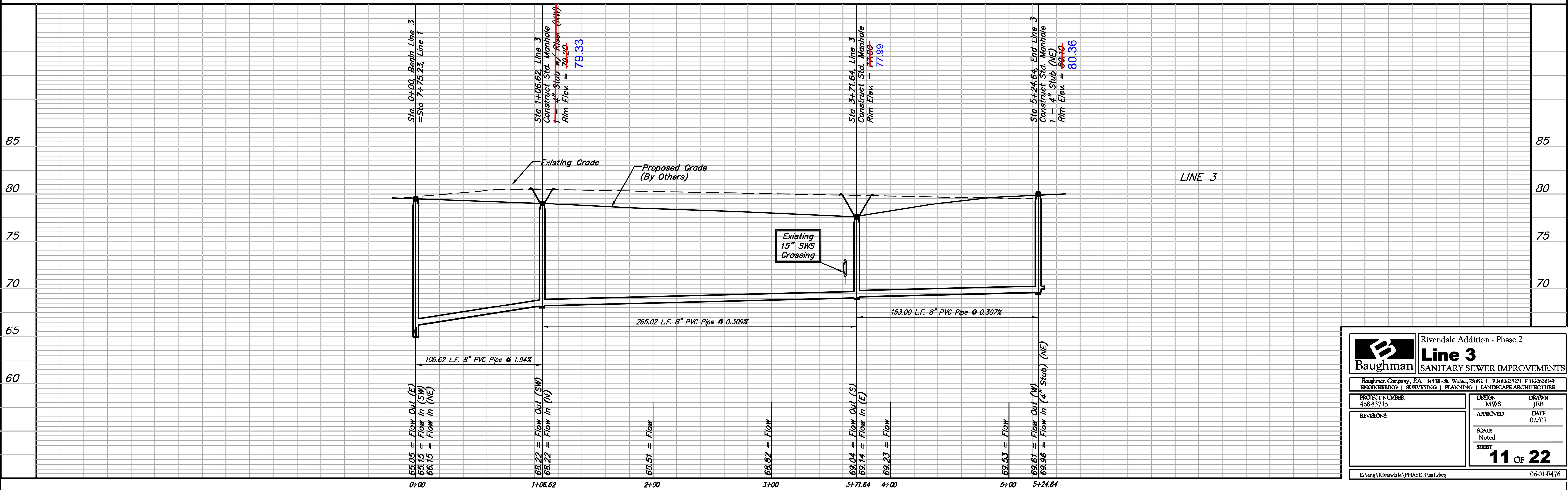
SEWER SERVICE TABLE

NUMBER	TYPE	LOCATION				FOR INFORMATION ONLY		
		LOT NO.	BLOCK NO.	LINE NO.	STATION/DIRECTION	APPROXIMATE LENGTH 4" PIPE		
16	8" X 4" Tee Saddle* <del>4" Stub w/ Riser</del>	28	C	3	1+06.62/Rt.	19	9'	11'
17	8" X 4" Tee Saddle	27	C	3	2+07/Rt.		9'	12.5'
18	8" X 4" Tee Saddle	26	C	3	2+92/Rt.		8'	11'

NOTE: Vertical Riser Pipe shall be extended to 2' minimum above ground water elevation and 4' maximum below proposed ground elevation.

\* Note: Service Riser installed along sewer line east of MH.

⊗ Denotes Trees to be Trimmed or Removed by the Sanitary Sewer Contractor



**Baughman** Rivendale Addition - Phase 2  
**Line 3**  
 SANITARY SEWER IMPROVEMENTS

Baughman Company, P.A. 315 Ellis St. Wichita, KS 67211 P 316-262-7271 F 316-262-0149  
 ENGINEERING | SURVEYING | PLANNING | LANDSCAPE ARCHITECTURE

PROJECT NUMBER 468-83715	DESIGN MWS	DRAWN JEB
REVISIONS	APPROVED	DATE 02/07
	SCALE Noted	SHEET 11 OF 22

E:\eng\Rivendale\PHASE 3\ss1.dwg 06-01-E476