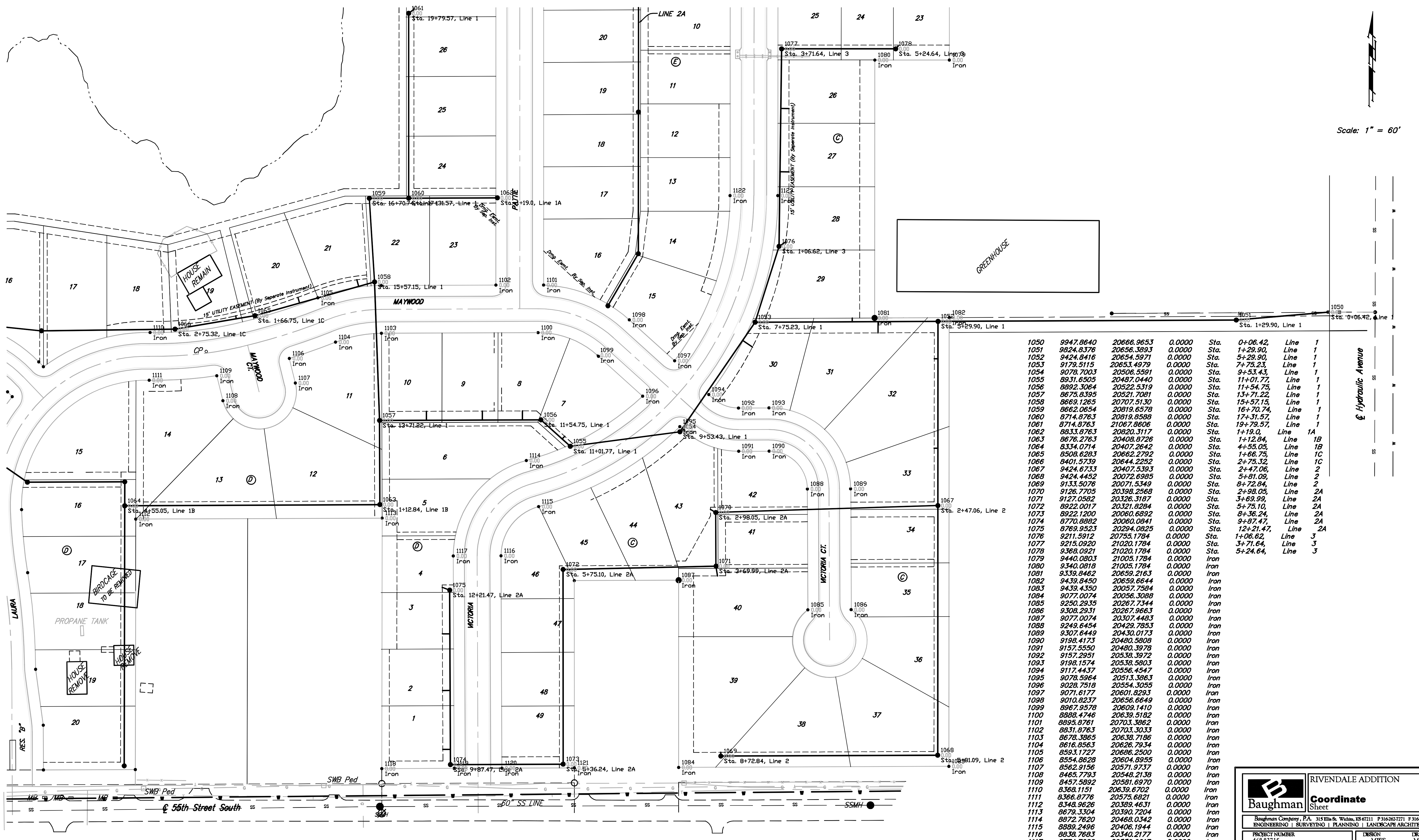



Scale: 1" = 60'



1050	9947.8640	20666.9653	0.0000	Sta. 0+06.42,	Line 1
1051	9824.8376	20656.3893	0.0000	Sta. 1+29.90,	Line 1
1052	9424.8416	20654.5971	0.0000	Sta. 5+29.90,	Line 1
1053	9179.5115	20653.4979	0.0000	Sta. 7+75.23,	Line 1
1054	9078.7003	20506.5591	0.0000	Sta. 9+53.43,	Line 1
1055	8931.6505	20487.0440	0.0000	Sta. 11+01.77,	Line 1
1056	8892.3064	20522.5319	0.0000	Sta. 11+54.75,	Line 1
1057	8675.8395	20521.7081	0.0000	Sta. 13+71.22,	Line 1
1058	8669.1265	20707.5130	0.0000	Sta. 15+57.15,	Line 1
1059	8662.0654	20819.6578	0.0000	Sta. 16+70.74,	Line 1
1060	8714.8763	20819.8588	0.0000	Sta. 17+31.57,	Line 1
1061	8714.8763	21067.8606	0.0000	Sta. 19+79.57,	Line 1
1062	8833.8763	20820.3117	0.0000	Sta. 1+19.0,	Line 1A
1063	8676.2763	20408.8726	0.0000	Sta. 1+12.84,	Line 1B
1064	8334.0714	20407.2642	0.0000	Sta. 4+55.05,	Line 1B
1065	8508.6283	20662.2792	0.0000	Sta. 1+66.75,	Line 1C
1066	8401.5739	20644.2252	0.0000	Sta. 2+75.32,	Line 1C
1067	9424.6733	20407.5393	0.0000	Sta. 2+47.06,	Line 2
1068	9424.4452	20072.6985	0.0000	Sta. 5+81.09,	Line 2
1069	9133.5076	20071.5349	0.0000	Sta. 8+72.84,	Line 2
1070	9126.7705	20398.2568	0.0000	Sta. 2+98.05,	Line 2A
1071	9127.0582	20326.3187	0.0000	Sta. 3+69.99,	Line 2A
1072	8922.0017	20321.6284	0.0000	Sta. 5+75.10,	Line 2A
1073	8922.1200	20060.6892	0.0000	Sta. 8+36.24,	Line 2A
1074	8770.8882	20060.0841	0.0000	Sta. 9+87.47,	Line 2A
1075	8769.9523	20294.0825	0.0000	Sta. 12+21.47,	Line 2A
1076	9215.5912	20755.1784	0.0000	Sta. 1+06.62,	Line 3
1077	9215.0920	21020.1784	0.0000	Sta. 3+71.64,	Line 3
1078	9368.0921	21020.1784	0.0000	Sta. 5+24.64,	Line 3
1079	9440.0803	21005.1784	0.0000	Iron	
1080	9340.0818	21005.1784	0.0000	Iron	
1081	9339.8462	20659.2163	0.0000	Iron	
1082	9439.8450	20659.6644	0.0000	Iron	
1083	9439.4350	20057.7584	0.0000	Iron	
1084	9077.0074	20056.3088	0.0000	Iron	
1085	9250.2935	20267.7344	0.0000	Iron	
1086	9308.2931	20267.9663	0.0000	Iron	
1087	9077.0074	20307.4483	0.0000	Iron	
1088	9249.6454	20429.7853	0.0000	Iron	
1089	9307.6449	20430.0173	0.0000	Iron	
1090	9198.4173	20480.5808	0.0000	Iron	
1091	9157.5550	20480.3978	0.0000	Iron	
1092	9157.2951	20538.3972	0.0000	Iron	
1093	9198.1574	20538.5803	0.0000	Iron	
1094	9117.4437	20556.4547	0.0000	Iron	
1095	9078.5964	20513.3863	0.0000	Iron	
1096	9028.7518	20554.3055	0.0000	Iron	
1097	9071.6177	20601.8293	0.0000	Iron	
1098	9010.8237	20656.6649	0.0000	Iron	
1099	8967.9578	20609.1410	0.0000	Iron	
1100	8888.4746	20639.5182	0.0000	Iron	
1101	8895.8761	20703.3862	0.0000	Iron	
1102	8831.8763	20703.3033	0.0000	Iron	
1103	8678.3865	20638.7186	0.0000	Iron	
1104	8616.8563	20626.7934	0.0000	Iron	
1105	8593.1727	20686.2500	0.0000	Iron	
1106	8554.8628	20604.8955	0.0000	Iron	
1107	8562.9156	20571.9737	0.0000	Iron	
1108	8465.7793	20548.2138	0.0000	Iron	
1109	8457.5892	20581.6970	0.0000	Iron	
1110	8368.1151	20639.6702	0.0000	Iron	
1111	8366.8776	20575.6821	0.0000	Iron	
1112	8348.9626	20389.4631	0.0000	Iron	
1113	8679.3304	20390.7204	0.0000	Iron	
1114	8872.7620	20468.0342	0.0000	Iron	
1115	8889.2496	20406.1944	0.0000	Iron	
1116	8838.7683	20340.2177	0.0000	Iron	
1117	8774.7688	20339.9617	0.0000	Iron	
1118	8678.8724	20054.7163	0.0000	Iron	
1119	8775.9082	20055.1044	0.0000	Iron	
1120	8839.9077	20055.3604	0.0000	Iron	
1121	8937.1222	20055.7493	0.0000	Iron	
1122	9145.9579	20823.3622	0.0000	Iron	
1123	9209.9579	20823.3186	0.0000	Iron	



Baughman
ENGINEERING | SURVEYING | PLANNING | LANDSCAPE ARCHITECTURE

RIVENDALE ADDITION
Coordinate Sheet

Baughman Company, P.A. 315 Ellis St. Wichita, KS 67211 P 316-262-7271 F 316-262-0149	
PROJECT NUMBER 468-83715	DESIGN MWS
REVISIONS:	DRAWN MWS
	APPROVED DATE 02/07
	SCALE Noted
	SHEET

21 OF 22

e:\eng\Rivendale\Phase 3\ss_stakingpoints.dwg