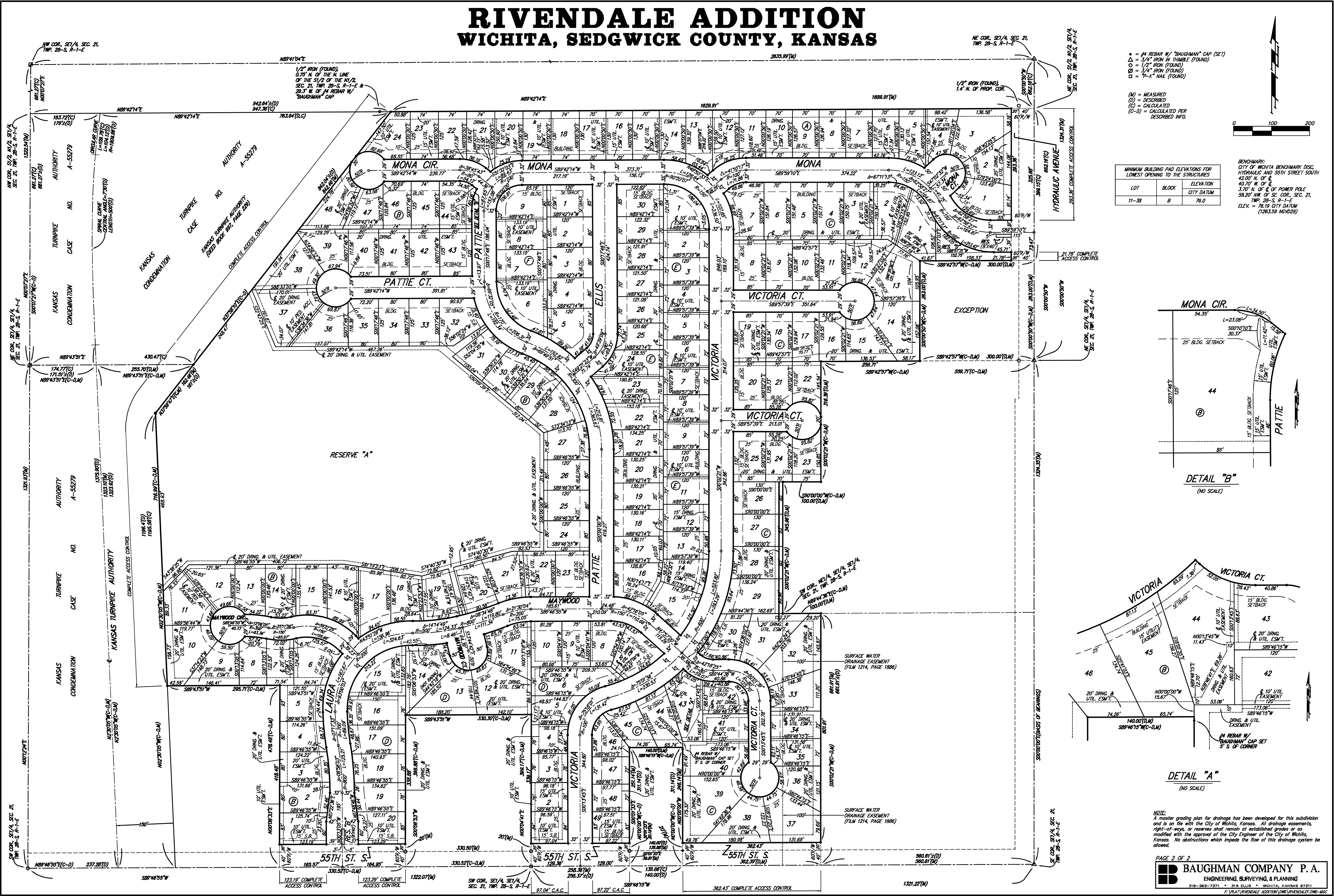
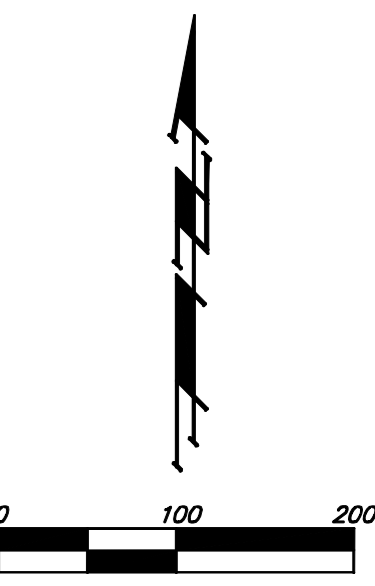


RIVENDALE ADDITION

WICHITA, SEDGWICK COUNTY, KANSAS

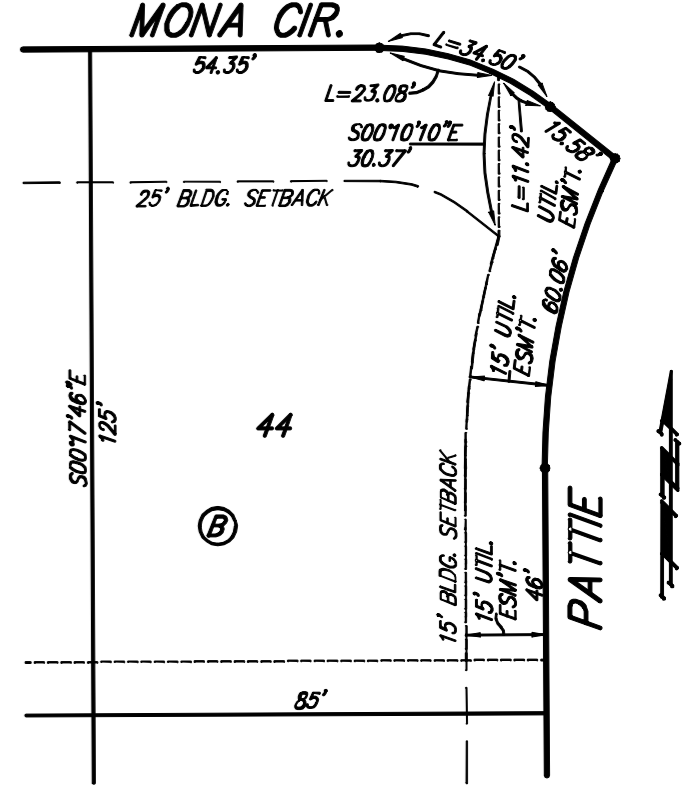


- = #4 REBAR W/ "BAUGHMAN" CAP (SET)
 - △ = 3/4" IRON IN THIMBLE (FOUND)
 - = 1/2" IRON (FOUND)
 - ⊙ = 3/4" IRON (FOUND)
 - ⊠ = 7"-x" NAIL (FOUND)
- (M) = MEASURED
 (D) = DESCRIBED
 (C) = CALCULATED
 (C-D) = CALCULATED PER DESCRIBED INFO.

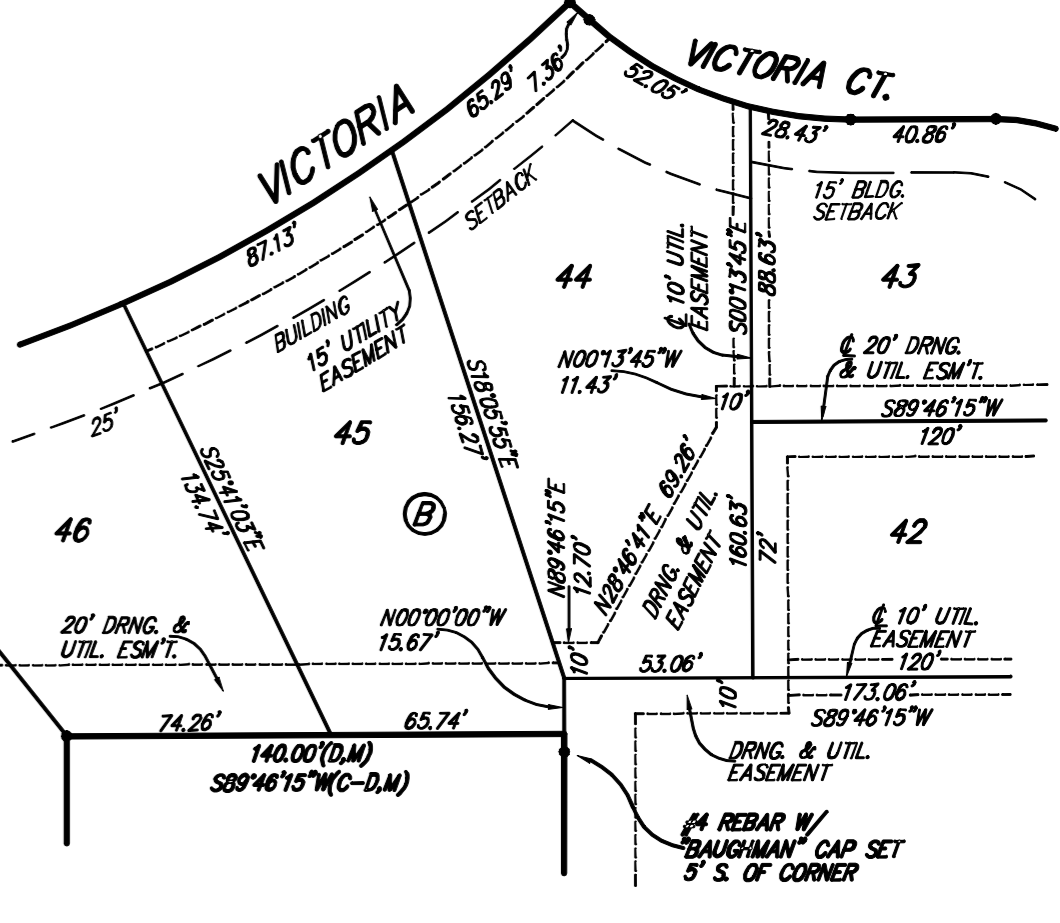


MINIMUM BUILDING PAD ELEVATIONS FOR LOWEST OPENING TO THE STRUCTURES		
LOT	BLOCK	ELEVATION CITY DATUM
11-38	B	76.0

BENCHMARK: CITY OF WICHITA BENCHMARK DISC HYDRAULIC AND 55TH STREET SOUTH 42.00' N. OF & 40.70' W. OF & 3.70' N. OF & OF POWER POLE CITY DATUM 58.20' NW. OF SE. COR. SEC. 21, TWP. 28-S, R-1-E ELEV. = 76.19 CITY DATUM (1283.59 NGVD29)



DETAIL "B"
(NO SCALE)



DETAIL "A"
(NO SCALE)

NOTES:
 A master grading plan for drainage has been developed for this subdivision and is on file with the City of Wichita, Kansas. All drainage easements, right-of-ways, or reserves shall remain at established grades or as modified with the approval of the City Engineer of the City of Wichita, Kansas. No obstructions which impede the flow of this drainage system be allowed.