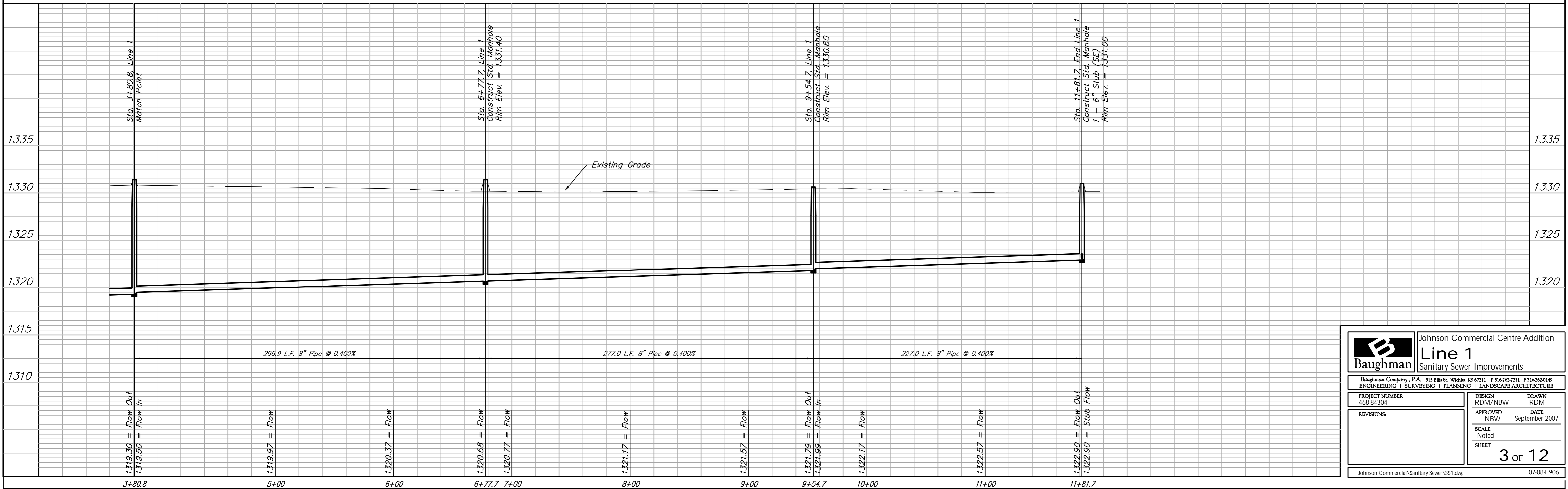
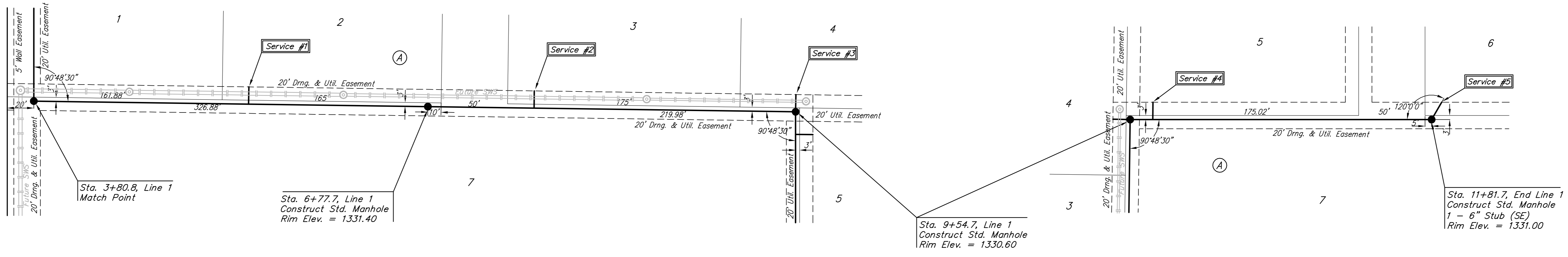


**BENCHMARK:**  
 COW Benchmark at the Intersection of  
 Meridian and 53rd St. N., NE Corner,  
 Top of Concrete Headwall  
 44' North of Centerline  
 37' East of Centerline  
 50.90' NE of Section Corner  
 9' NE of and Radial to Curb  
 26' East of Section Line  
 Elev. = 1331.37 NGVD29

NUMBER	CONNECTION TYPE	LOCATION				FOR INFORMATION ONLY	
		LOT NO.	BLOCK NO.	LINE NO.	STATION/DIRECTION	APPROXIMATE LENGTH 4" PIPE	
						VERTICAL	HORIZONTAL
1	8" x 6" Tee	2	A	1	5+42.7/Lt.	6	13
2	8" x 6" Tee	3	A	1	7+57.7/Lt.	5	13
3	6" Stub	4	A	1	9+45.7/Lt.	4	13
4	8" x 6" Tee	5	A	1	9+71.9/Lt.	4	13
5	6" Stub	6	A	1	11+81.7/Lt.	4	15

NOTE: Vertical Riser Pipe shall be extended to 2' minimum above ground water elevation and 4' maximum below proposed ground elevation. Use Method "B" for all riser assemblies as shown on Riser Installation Details, Sheet 6.

Scale: 1" = 40' Horizontal  
 1" = 5' Vertical  
 ● = Iron



	Johnson Commercial Centre Addition	
	Line 1 Sanitary Sewer Improvements	
<small>Baughman Company, P.A. 315 Ellis St. Wichita, KS 67211 P 316-262-7271 F 316-262-0149          ENGINEERING   SURVEYING   PLANNING   LANDSCAPE ARCHITECTURE</small>		
PROJECT NUMBER 468-84304	DESIGN RDM/NBW	DRAWN RDM
REVISIONS:	APPROVED NBW	DATE September 2007
SCALE Noted		SHEET 3 of 12
<small>Johnson Commercial\Sanitary Sewer\SS1.dwg</small>		<small>07-08-E906</small>