

Install 13 Sq. Yards Of Light Stone Rip-Rap To Flow Line Grade Shown w/Grouted Toe Wall On North, South & West Edges. Toe Wall Shall Extend A Minimum Of 2' Below Filter Course. Install Geotextile Fabric Under Rip-Rap. Geotextile Fabric Shall Be Contech C-80NW Or Approved Equal. See Detail.

Sta. 0+00.0, Begin Line 1. Install 18" Concrete End Section. Extend 18" RCP Southeast.

Sta. 0+73.1, Line 1. Construct 3'x5' Type "1" Curb Inlet. Top = 1332.60. Install Sediment Barrier.

Sta. 2+33.1, Line 1. Construct 3'x5' Type "1" Curb Inlet. Top = 1335.70. Install Sediment Barrier.

Sta. 3+59.1, Line 1. Construct 3'x5' Type "1" Curb Inlet. Top = 1335.90. Install Sediment Barrier. Match Point.

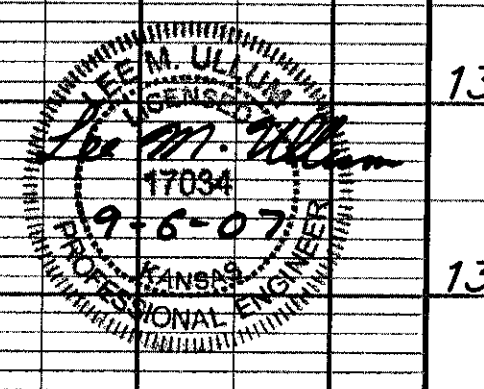
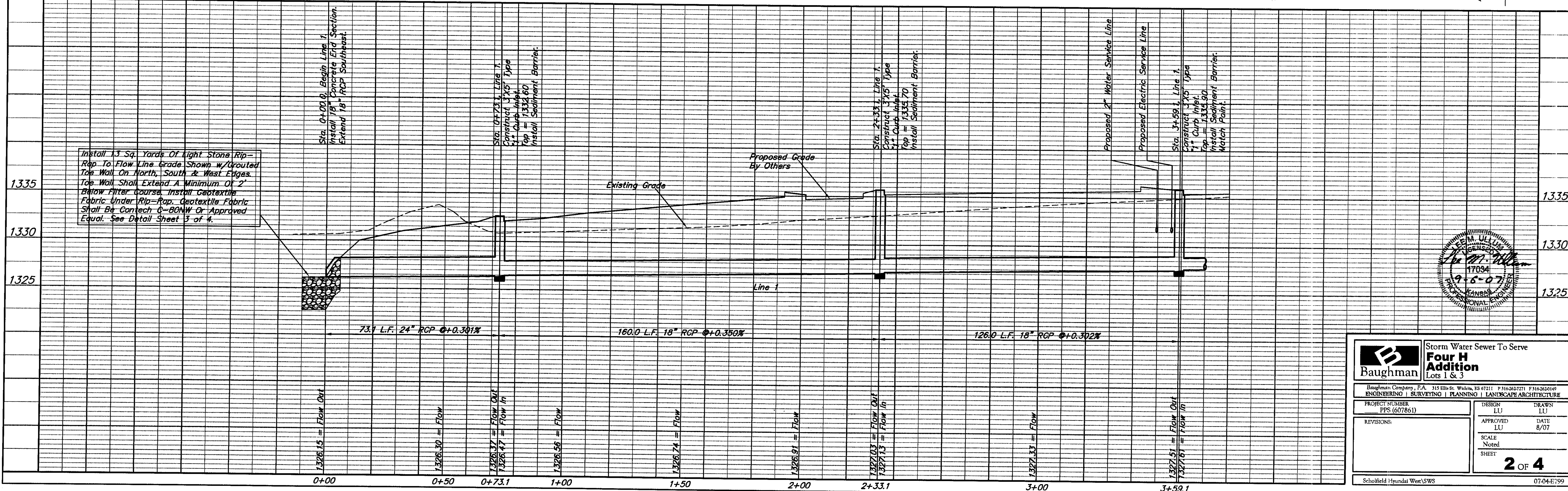
BENCHMARK

"□" Chiseled on top of inlet north of the north access drive. Elev. = 1333.66 NGVD29

Contractor Shall Follow All Applicable Best Management Practices (BMP) For Erosion Control.

Contractor To Use Extreme Caution When Excavating Near Utility Lines. Contractor To Hand Dig To Expose All Utility Lines Prior To Construction. Verify Depth To Determine Conflict If Any.

SCALE:
1" = 20' HORIZONTAL
1" = 5' VERTICAL



		Storm Water Sewer To Serve Four H Addition Lots 1 & 3	
<small>Baughman Company, P.A. 315 Ellis St. Wichita, KS 67211 P 316-2637271 F 316-2630149</small>			
<small>ENGINEERING SURVEYING PLANNING LANDSCAPE ARCHITECTURE</small>			
PROJECT NUMBER PPS (607861)	DESIGN LU	DRAWN LU	APPROVED LU
REVISIONS:	DATE 8/07	SCALE Noted	SHEET 2 OF 4
<small>Schoolfield Hyundai West/SWS</small>			<small>07-04-E799</small>