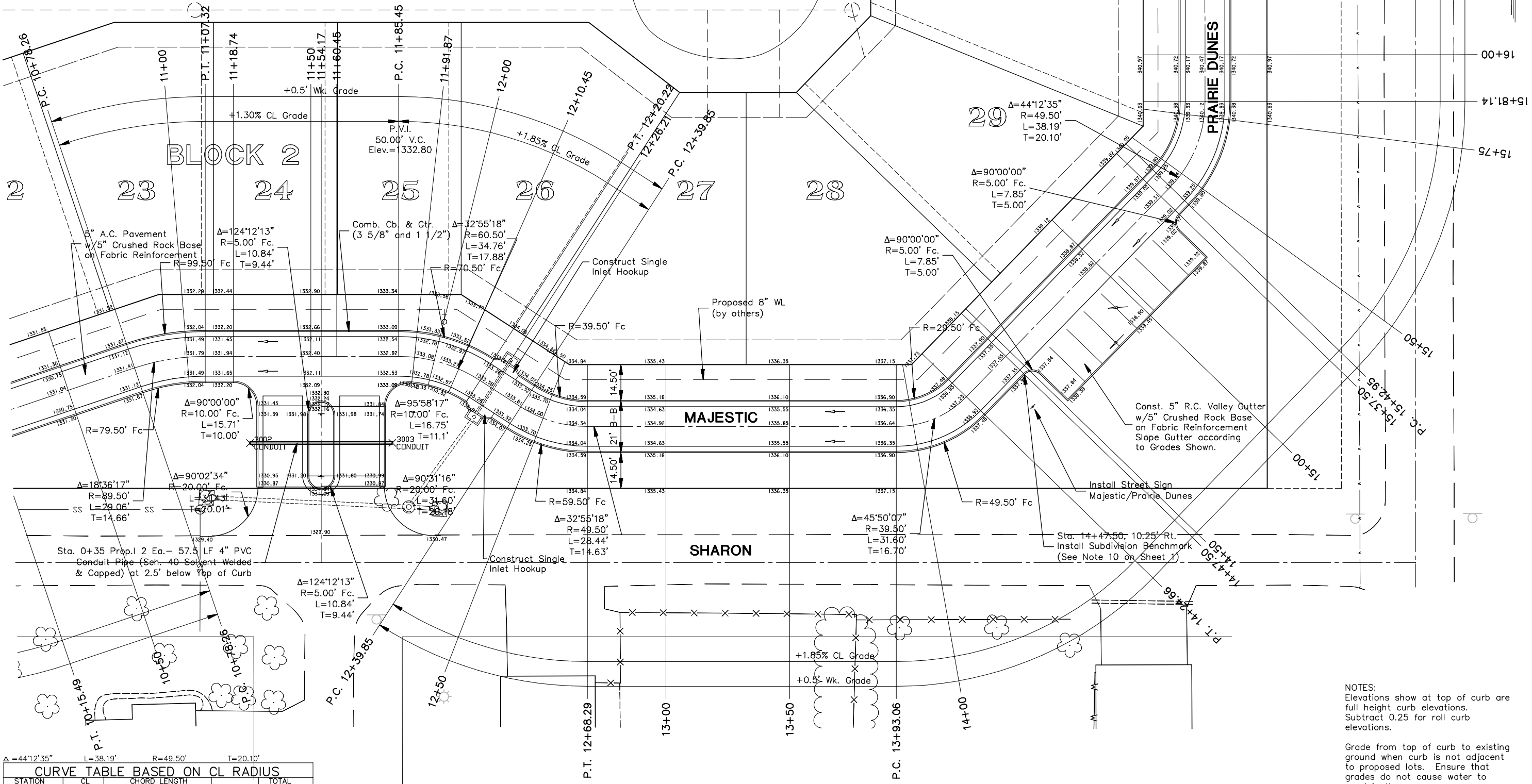
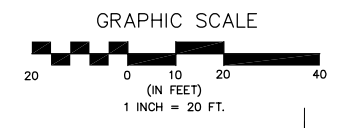


CURVE TABLE BASED ON CL RADIUS						CURVE TABLE BASED ON CL RADIUS					
STATION	CL ARC	CHORD LENGTH		B' RT.	TOTAL DEFLECTION	STATION	CL ARC	CHORD LENGTH		B' RT.	TOTAL DEFLECTION
10+78.26 P.C.	21.74'	26.17'	21.69'	17.20'	6°57'31"	11+85.45 P.C.	14.55'	18.95'	14.51'	10.08'	6°53'23"
11+00.00	7.32'	8.83'	7.32'	5.81'	2°20'37"	12+10.45	10.45'	13.63'	10.44'	7.25'	4°56'54"
11+07.32 P.T.	DEFLECTION/FOOT = 0.320088154 DEGREES					12+20.21 P.T.	DEFLECTION/FOOT = 0.473518839 DEGREES				
19.205289222 MINUTES						28.411130337 MINUTES					

RECORD DRAWING  
1/9/2008 MLT



CURVE TABLE BASED ON CL RADIUS					
STATION	CL ARC	CHORD LENGTH		B' RT.	TOTAL DEFLECTION
15+42.95 P.C.	7.05'	4.41'	7.04'	9.68'	4°4'49"
15+50.00	00.00'	00.00'	00.00'	00.00'	0°0'0"
15+75.00	25.00'	15.49'	24.74'	33.98'	14°28'7"
15+81.14 P.T.	6.14'	3.85'	6.14'	8.44'	3°33'22"
DEFLECTION/FOOT = 0.578745248 DEGREES					
34.724714856 MINUTES					

No.	Street and Station	From CL	Description	Elevation
3	Majestic, 14+47.50	10.25' (SE)	Top of Curb (SE), at End of Return	1337.65

NOTES:  
Elevations show at top of curb are full height curb elevations. Subtract 0.25 for roll curb elevations.  
Grade from top of curb to existing ground when curb is not adjacent to proposed lots. Ensure that grades do not cause water to pond in these areas.

**POE & ASSOCIATES, INC.**  
CONSULTING ENGINEERS  
5940 E. Central, Suite 200, Wichita, KS 67208-4242  
Phone: 316.685-1111 FAX: 316.685-4444

**TERRADYNE WEST ADDITION**  
STREET IMPROVEMENTS  
MAJESTIC/PRAIRIE DUNES  
CITY OF WICHITA, KANSAS  
JAMES L. ARMOUR, P.E. - CITY ENGINEER  
Private Project # 179PPP O.C.A. # 607879

**FINAL**

Designed By: J. Dickman  
Drawn By: M. Tucker  
Poe Job No.: 1809B  
Date: April 2007

Sheet 5 of 94