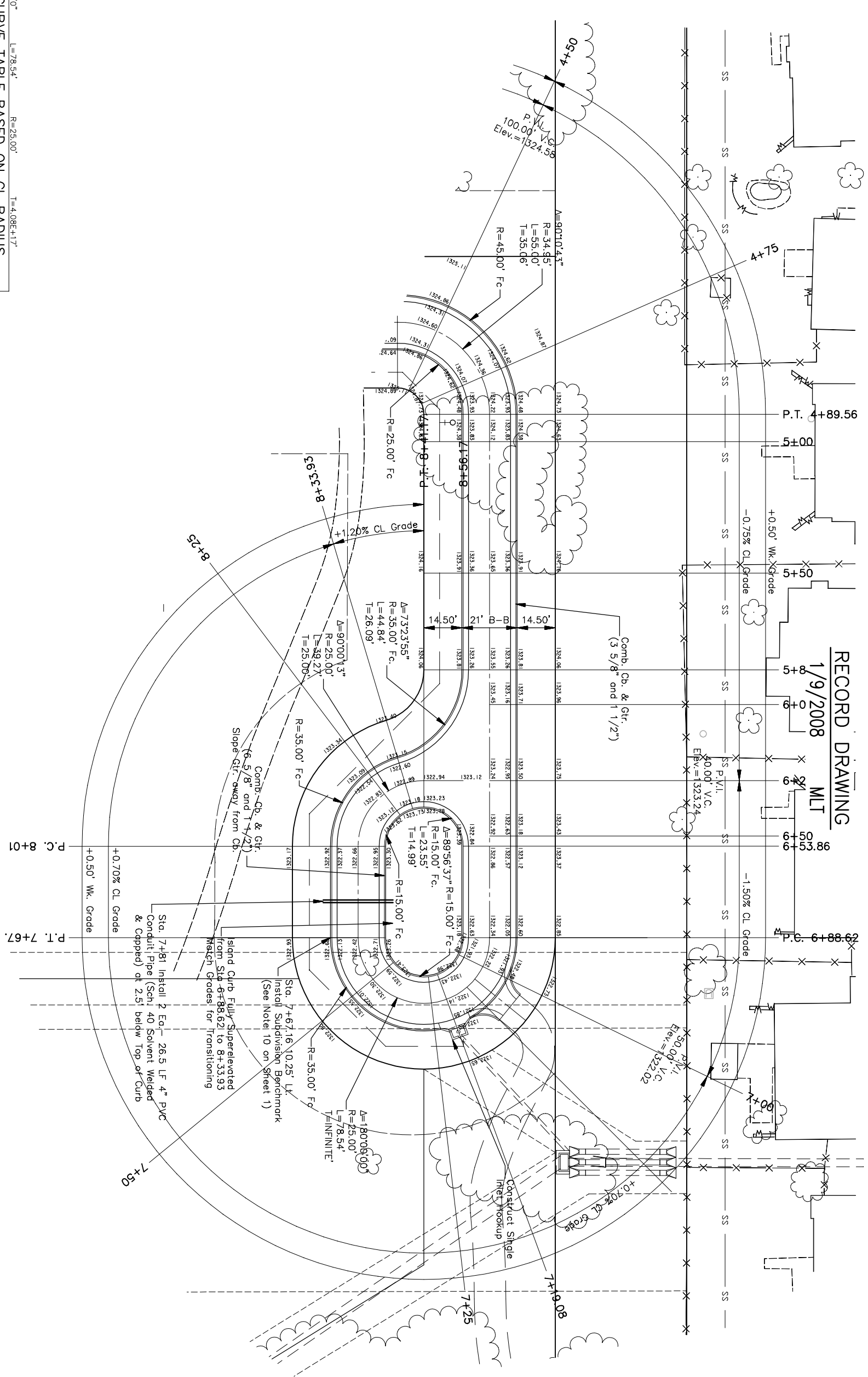




**RECORD DRAWING**  
1/9/2008  
MLT



$\Delta=180^{\circ}0'$   $L=78.54'$   $R=25.00'$   $T=4.08E+17'$

**CURVE TABLE BASED ON CL RADIUS**

STATION	CL	CHORD LENGTH	DEFLECTION	DEFLECTION	TOTAL
	ARC	B. LT.	CL	B. RT.	DEFLECTION
6+88.62 P.C.	11.38'	19.63'	11.28'	2.93'	1327.26"
7+00.00	00.00'	00.00'	00.00'	0.00'	1327.26"
7+19.08	19.08'	32.40'	18.62'	4.84'	3454.17"
7+25.00	5.92'	10.28'	5.91'	1.54'	6472.2"
7+25.00	00.00'	00.00'	00.00'	0.00'	4134.18"
7+50.00	25.00'	41.71'	23.97'	6.23'	7020.11"
7+67.16 P.T.	17.16'	29.28'	16.82'	4.37'	1939.49"
DEFLECTION/FOOT = 1.145915590 DEGREES					68.754935416 MINUTES

$\Delta=90^{\circ}10'43''$   $L=55.01'$   $R=34.95'$   $T=35.06'$

**CURVE TABLE BASED ON CL RADIUS**

STATION	CL	CHORD LENGTH	DEFLECTION	DEFLECTION	TOTAL
	ARC	B. LT.	CL	B. RT.	DEFLECTION
4+34.56 P.C.	15.44'	23.42'	15.31'	7.21'	1239.21"
4+50.00	00.00'	00.00'	00.00'	0.00'	1239.21"
4+75.00	25.00'	37.42'	24.47'	11.52'	2079.51"
4+89.57 P.T.	14.57'	22.12'	14.46'	6.81'	1156.29"
DEFLECTION/FOOT = 0.819682110 DEGREES					49.180928621 MINUTES

$\Delta=90^{\circ}10'43''$   $L=55.01'$   $R=34.95'$   $T=35.06'$

**CURVE TABLE BASED ON CL RADIUS**

STATION	CL	CHORD LENGTH	DEFLECTION	DEFLECTION	TOTAL
	ARC	B. LT.	CL	B. RT.	DEFLECTION
8+01.90 P.C.	23.10'	38.78'	22.29'	5.79'	2628.14"
8+25.00	8.93'	15.46'	8.88'	2.31'	1013.99"
8+33.93	7.24'	12.56'	7.22'	1.88'	817.53"
8+41.17 P.T.	7.24'	12.56'	7.22'	1.88'	817.53"
DEFLECTION/FOOT = 1.145915590 DEGREES					68.754935416 MINUTES

$\Delta=90^{\circ}10'43''$   $L=55.01'$   $R=34.95'$   $T=35.06'$

**CURVE TABLE BASED ON CL RADIUS**

STATION	CL	CHORD LENGTH	DEFLECTION	DEFLECTION	TOTAL
	ARC	B. LT.	CL	B. RT.	DEFLECTION
4+34.56 P.C.	15.44'	23.42'	15.31'	7.21'	1239.21"
4+50.00	00.00'	00.00'	00.00'	0.00'	1239.21"
4+75.00	25.00'	37.42'	24.47'	11.52'	2079.51"
4+89.57 P.T.	14.57'	22.12'	14.46'	6.81'	1156.29"
DEFLECTION/FOOT = 0.819682110 DEGREES					49.180928621 MINUTES

No.	Street and Station	From CL	To	Elevation
9	Belle Terra, 7+67.16	10.25' (E)	Top of Curb (E), at P.T. of Curve	1322.43

NOTES:  
 Elevations show at top of curb are full height curb elevations. Subtract 0.25' for roll curb elevations.  
 Grade from top of curb to existing ground when curb is not adjacent to proposed lots. Ensure that grades do not cause water to pond in these areas.

**FINAL**



**POE & ASSOCIATES, INC.**  
 CONSULTING ENGINEERS  
 5940 E. Central, Suite 200 ■ Wichita, KS 67208-4242  
 Phone 316/685-4114 ■ FAX 316/685-4444

TERRADYNE WEST ADDITION  
 STREET IMPROVEMENTS  
 MAJESTIC  
**CITY OF WICHITA, KANSAS**  
 JAMES L. ARMOUR, P.E. - CITY ENGINEER  
 Private Project # 179PPPP O.C.A. # 607879

No.	Date	By	Approved	Revision