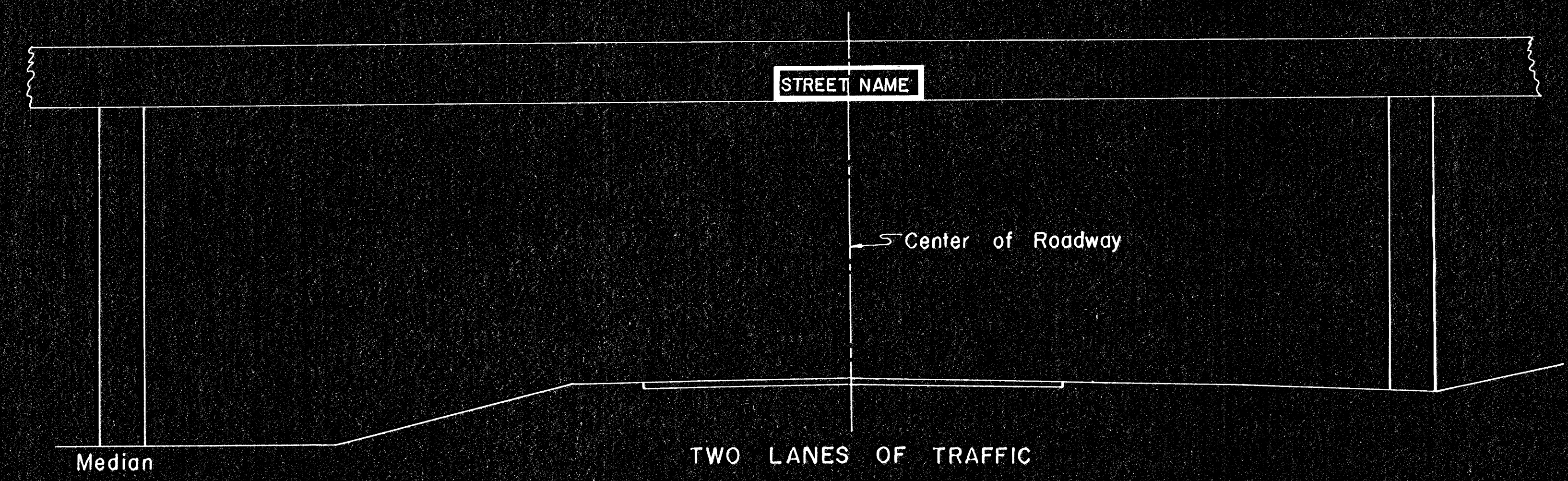
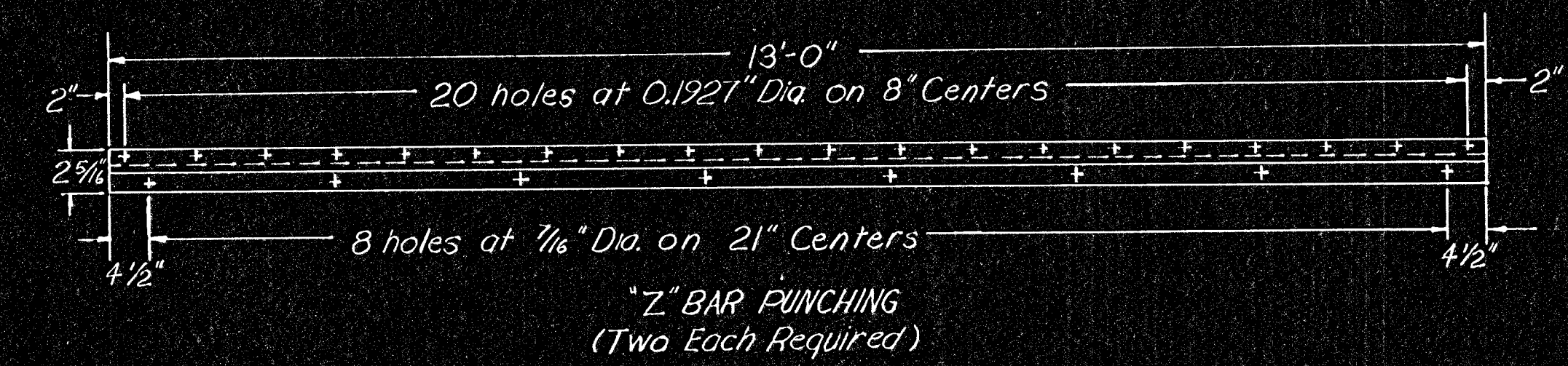
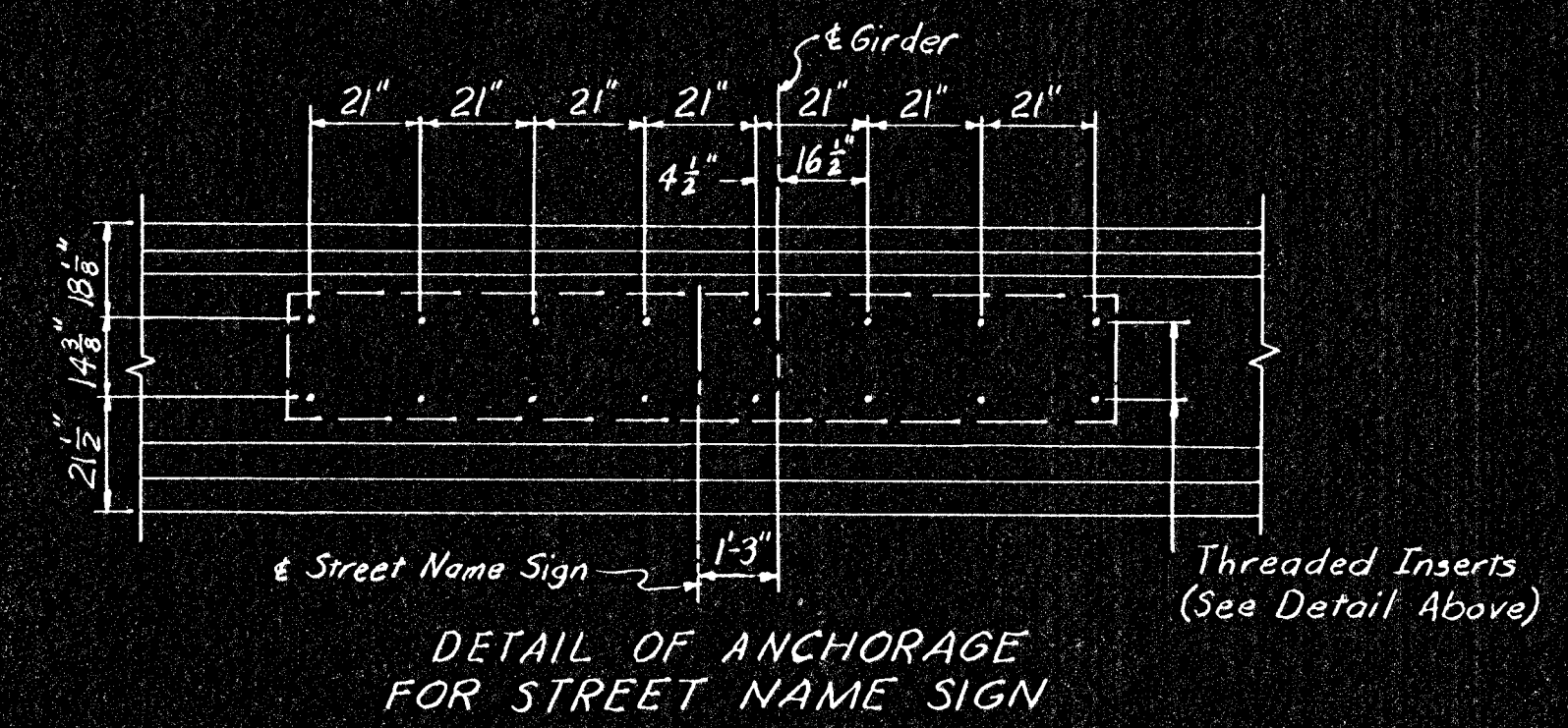
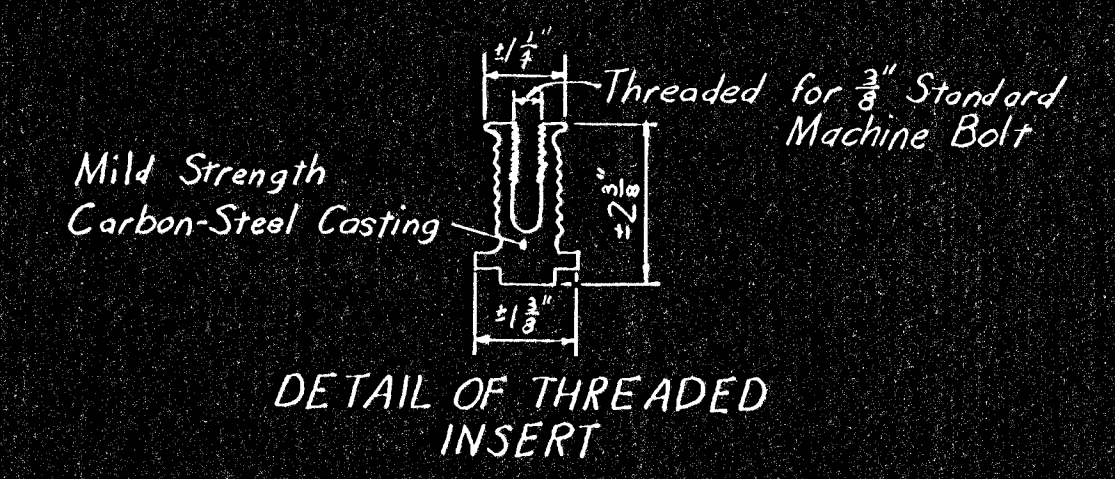
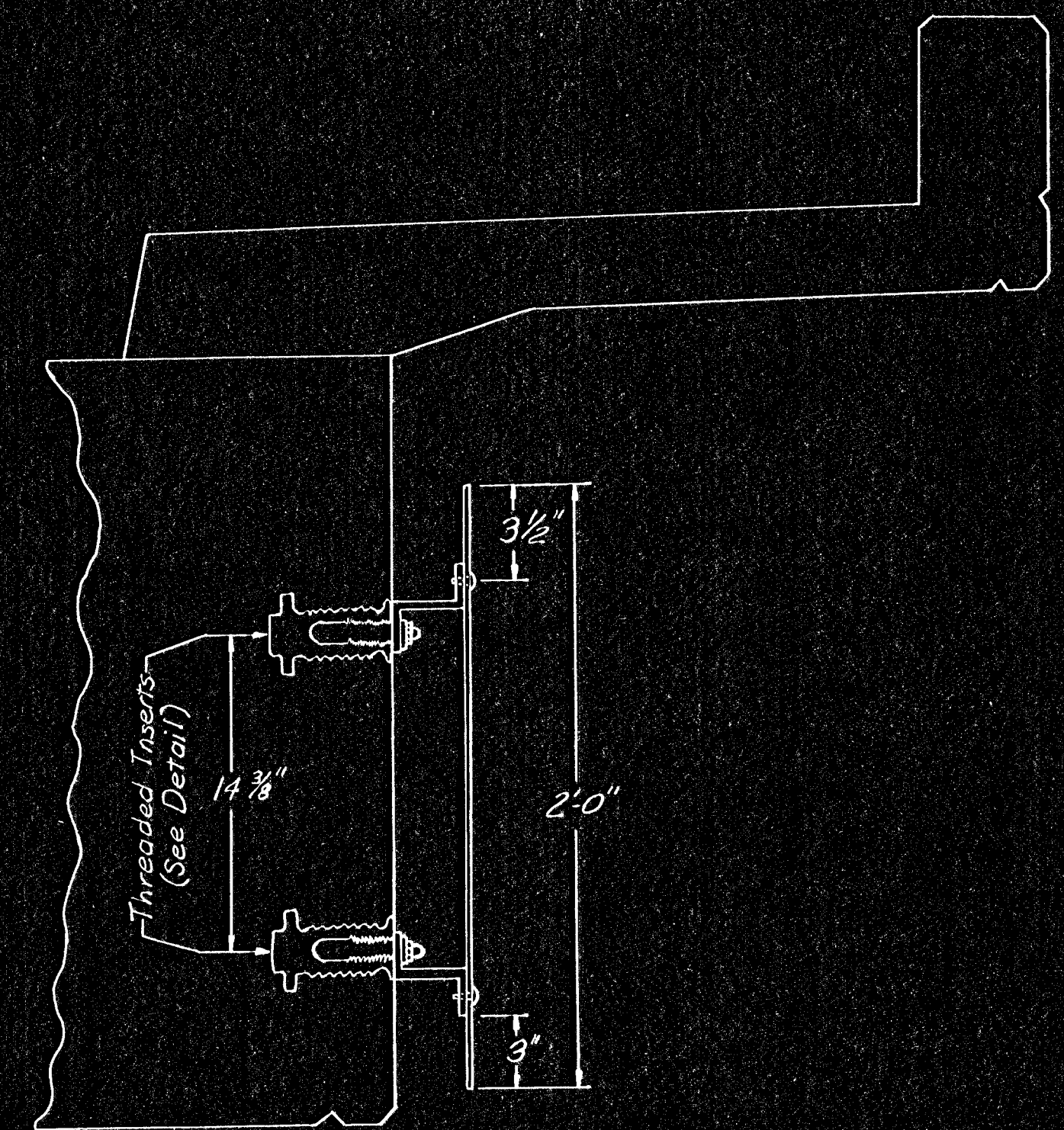


| FHWA REGION NO. | STATE | PROJECT NO. | YEAR | SHEET NO. | TOTAL SHEETS |
|-----------------|--------|-------------|------|-----------|--------------|
| 7 | KANSAS | | 1978 | 113 | 143 |

PROJ. NO. (BC) 96-87K-044-1(28) PARTS I & II



NOTE:
 The 2" x 2 3/4" x 3/16" aluminum "Z" bar shall be fastened to the face of the bridge girder with preset threaded inserts. The anchor bolt to be 3/8" diameter.
 D3 sign blanks to be 0.080" thick sheet aluminum of the width and height as shown and shall be fastened to the "Z" bar with 3/16" diameter aluminum front entry rivets.



| NO. | DATE | REVISIONS | BY | APP'D |
|-----|------|-----------|----|-------|
| 3 | | | | |
| 2 | | | | |
| 1 | | | | |

KANSAS DEPARTMENT OF TRANSPORTATION

MOUNTING DETAILS FOR D3 ON MERIDIAN AVE. BRIDGE

| | | | | |
|----------------------|------------|-----------|-----------|------------|
| SHEET NO. 113 OF 143 | SCALE | APP'D | DESIGNED | QUANTITIES |
| DESIGN CK. | DETAIL CK. | QUAN. CK. | TRACE CK. | TRACE CK. |