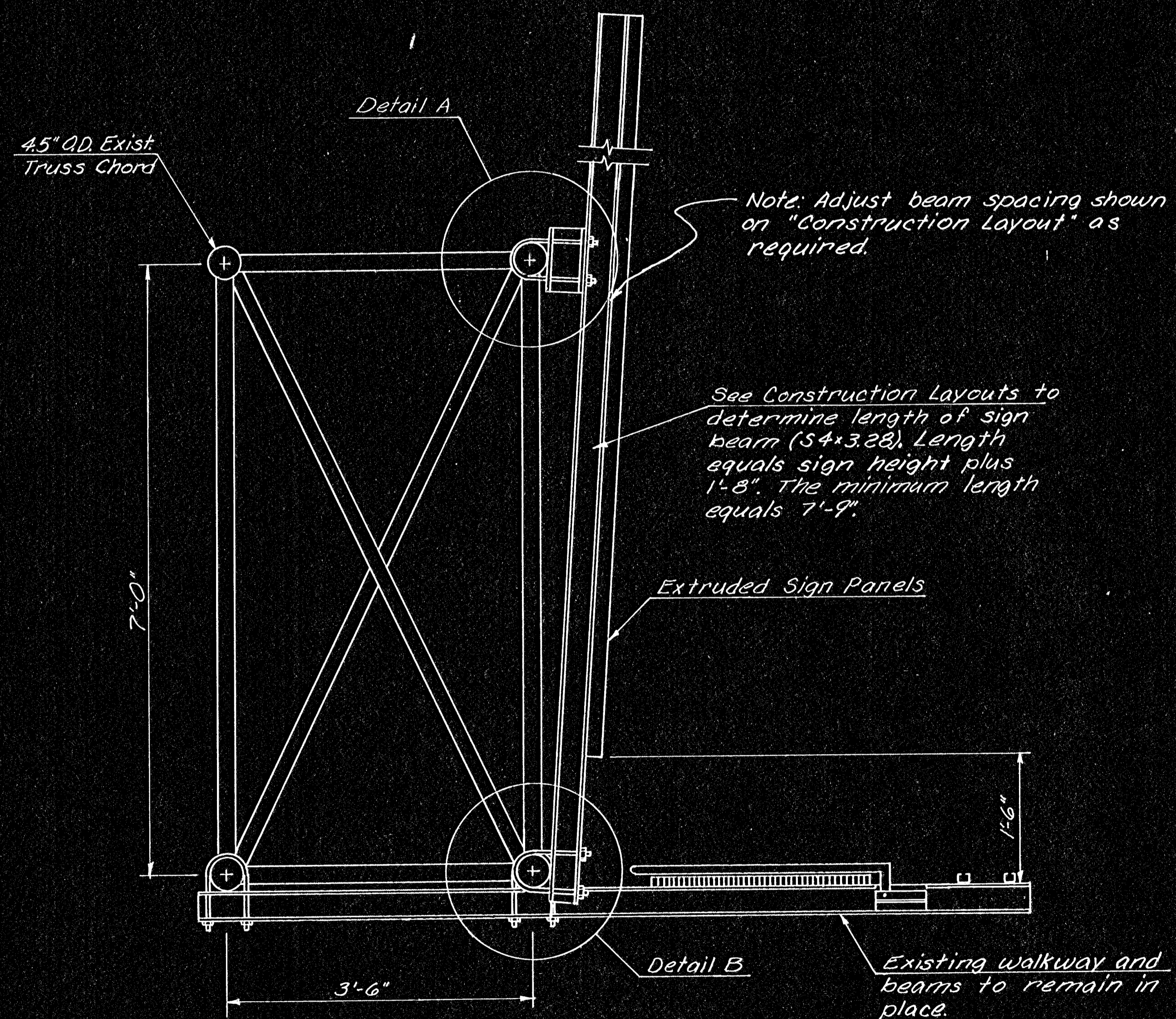
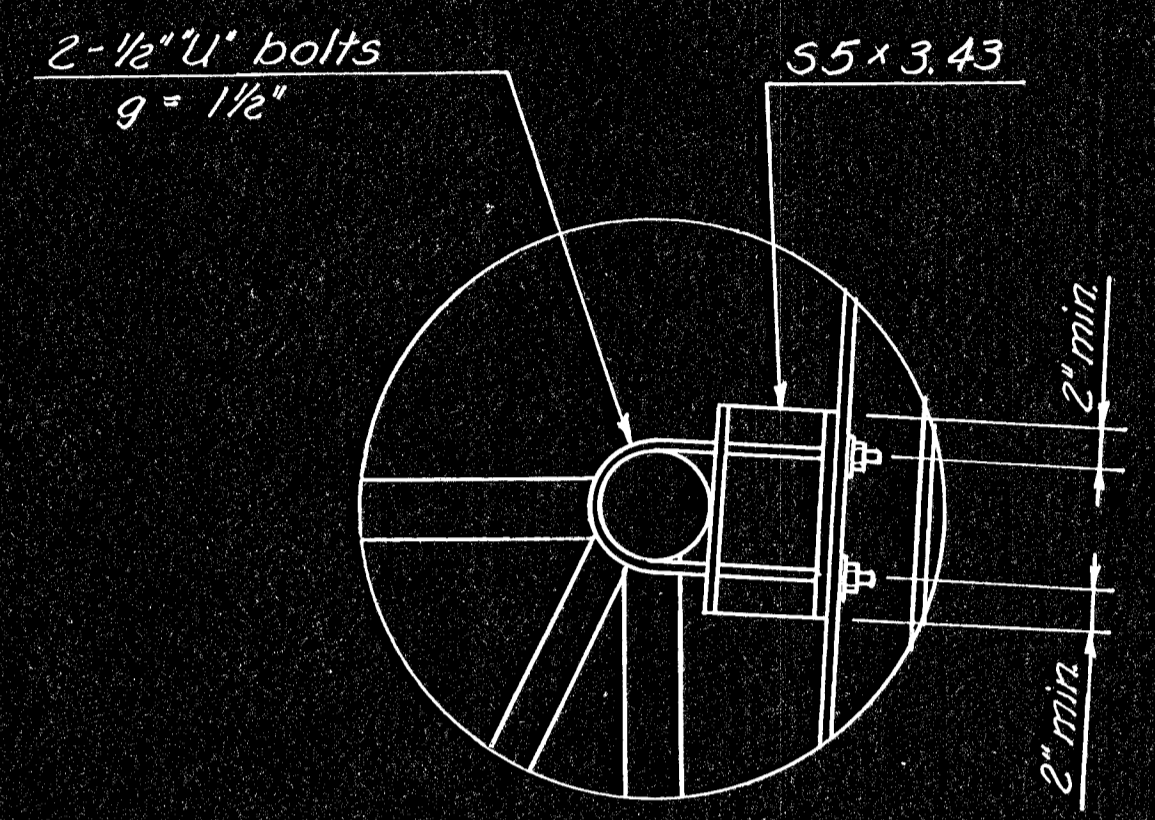


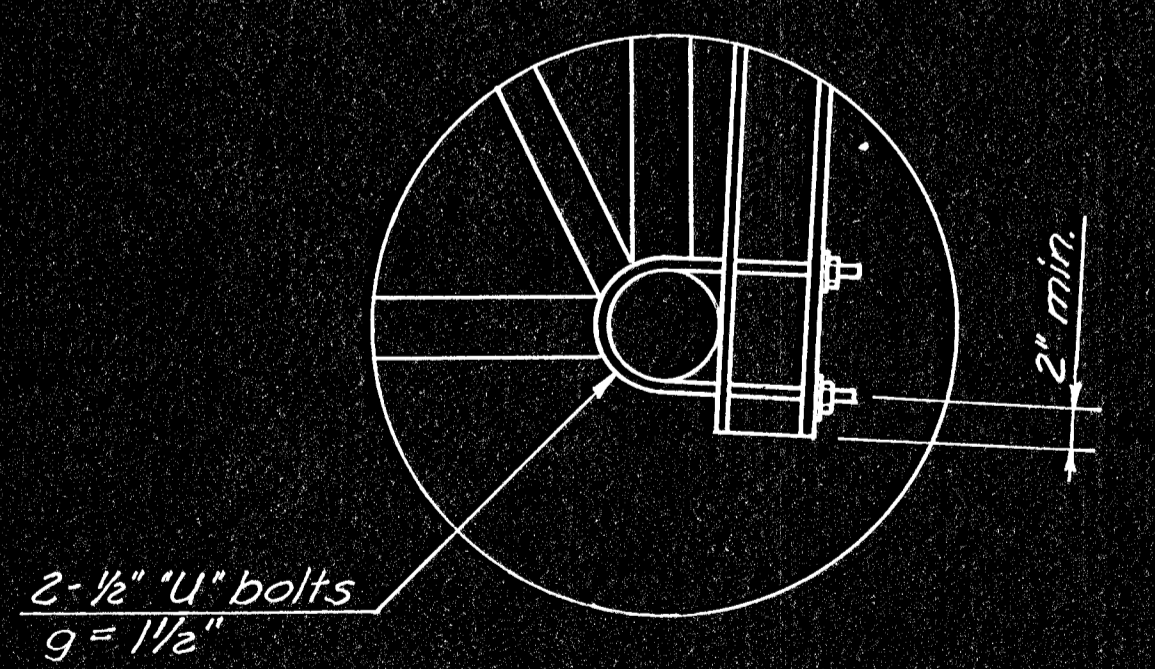
FHWA REGION NO.	STATE	PROJECT NO.	YEAR	SHEET NO.	TOTAL SHEETS
7	KANSAS	(BC)96-87-K044-1(28)	1978	114	143



ELEVATION OF EXISTING SIGN TRUSS



DETAIL A



DETAIL B

GENERAL NOTES

ALUMINUM SIGN BEAMS: Aluminum sign beams shall be A.S.T.M. B.308 alloy 6061-T6. The Contractor has the option to reuse any existing sign beams that are long enough for the new signs.

BOLTS: All miscellaneous steel fasteners shall conform to Kansas Highway Commission Standard Specifications and shall be coated.

3				
2				
1				
NO.	DATE	REVISIONS	BY	APP'D

DEPARTMENT OF TRANSPORTATION - KANSAS

SIGN MOUNTING DETAILS
FOR EXISTING SIGN TRUSSES

8-75

SHEET NO. 114 OF 143	SCALE	APP'D
DESIGNED LES	QUANTITIES	TRACED
DESIGN CK. DRE	DETAIL CK. DRE	QUAN. CK.