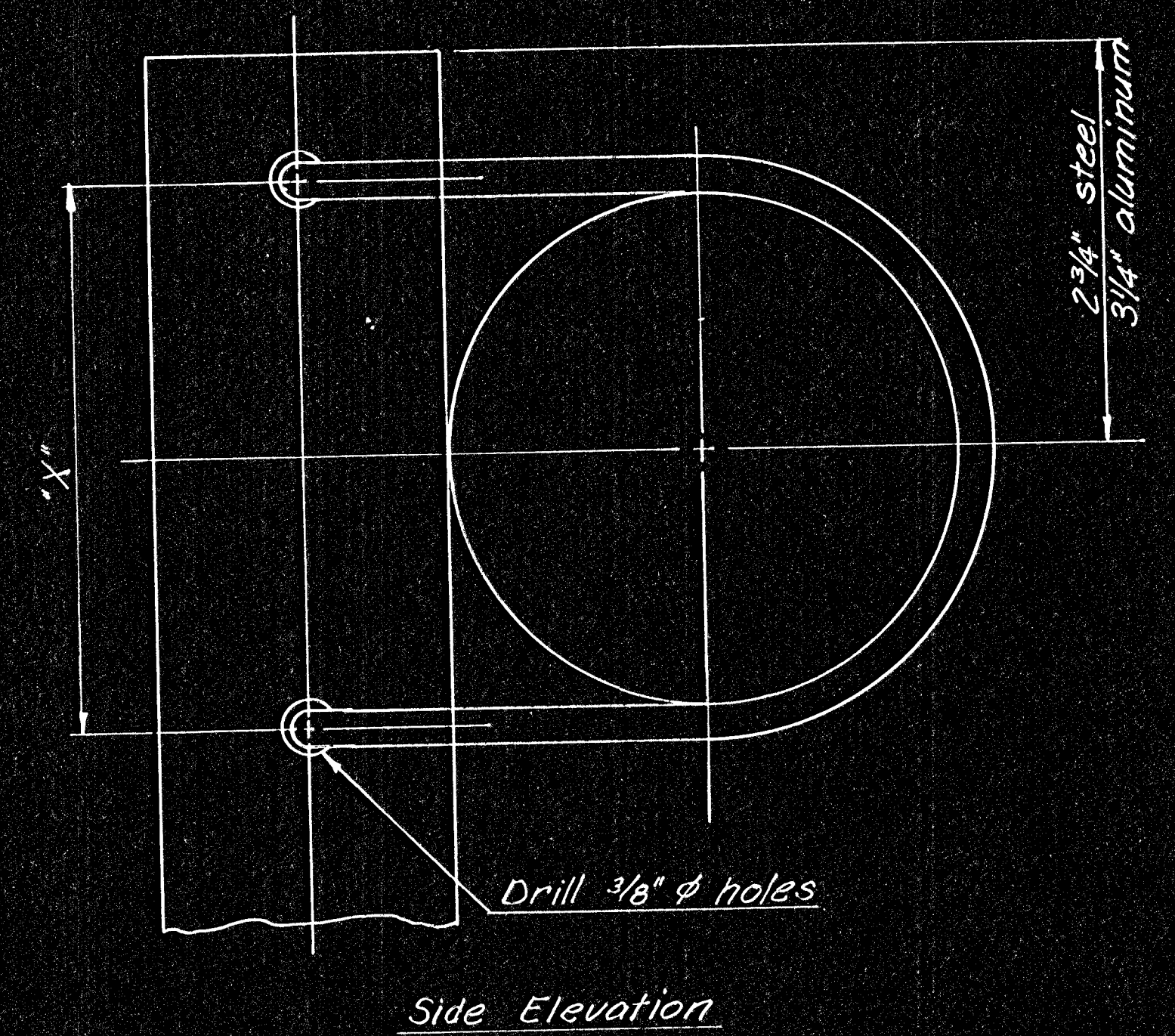
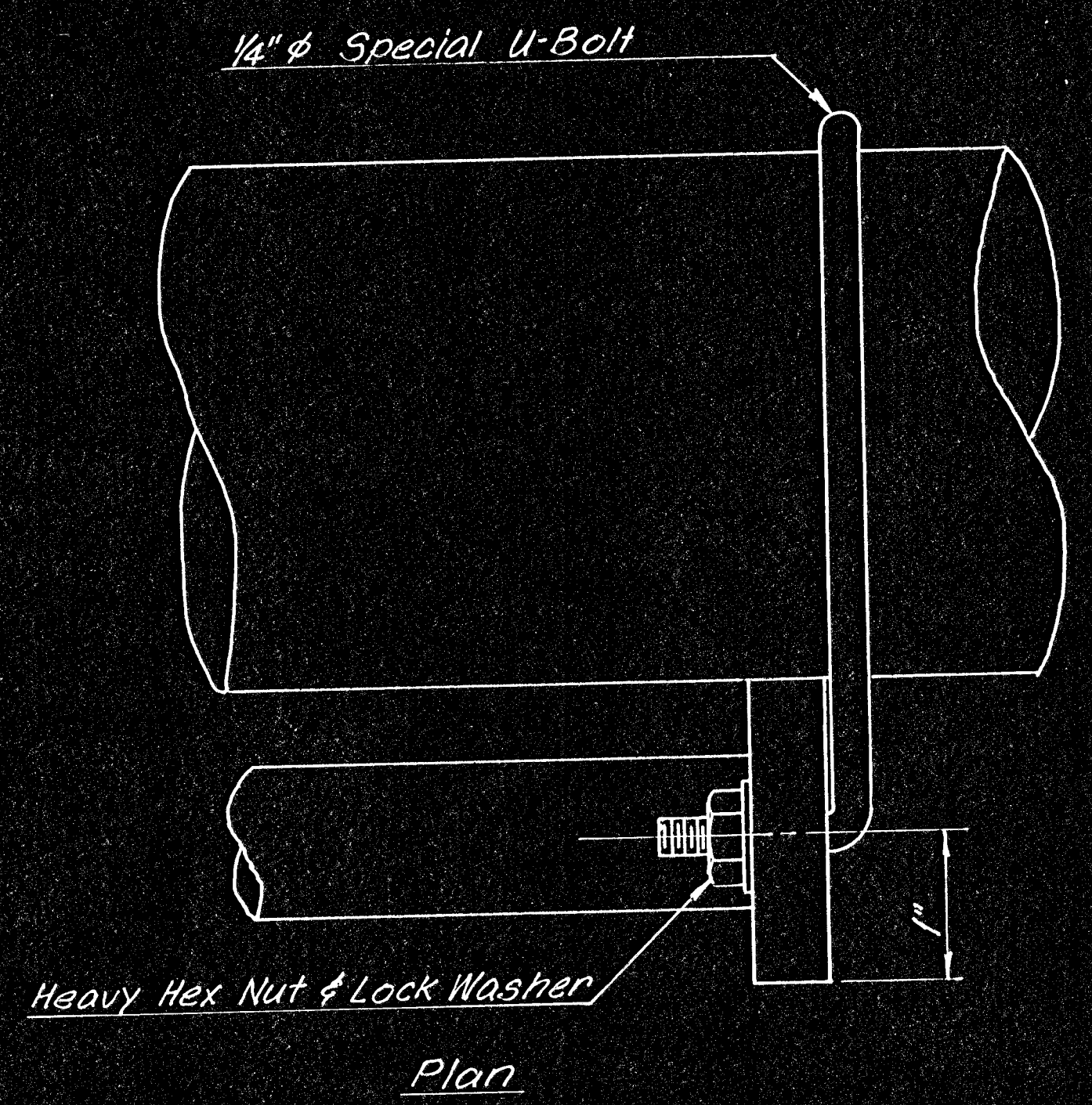


DIMENSION "X"		
Location	Horizontal Connection	Diagonal Connection
Steel	4"	6"
Aluminum	5"	7 1/2"



GENERAL NOTES

MATERIALS: This sheet covers both steel and aluminum alternates.

STEEL DESIGN: The ladder shall conform to ASTM A36 steel and shall have 1/2" x 2" support bars and 1" ϕ cross bars.

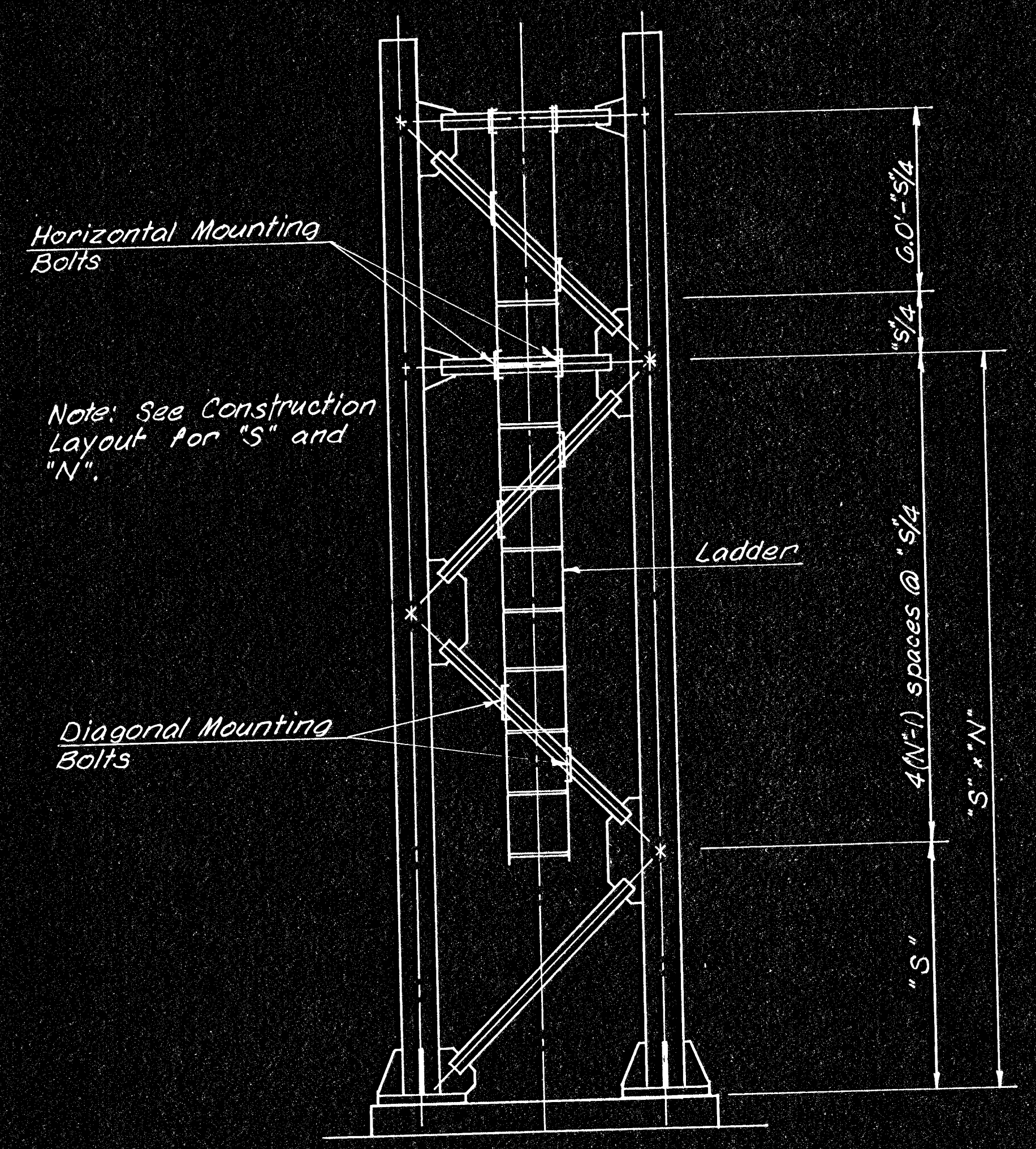
ALUMINUM DESIGN: The ladder shall conform to ASTM B211 alloy 6061-T6 or alloy 6063-T6 and shall have 1/2" x 2" support bars and 1" ϕ cross bars.

BOLTS: All miscellaneous steel fasteners shall conform to Kansas Highway Commission Standard Specifications and shall be coated.

GALVANIZING: All steel material shall be hot-dipped galvanized, according to ASTM A123, after fabrication. Any damage to the coating shall be repaired after erection.

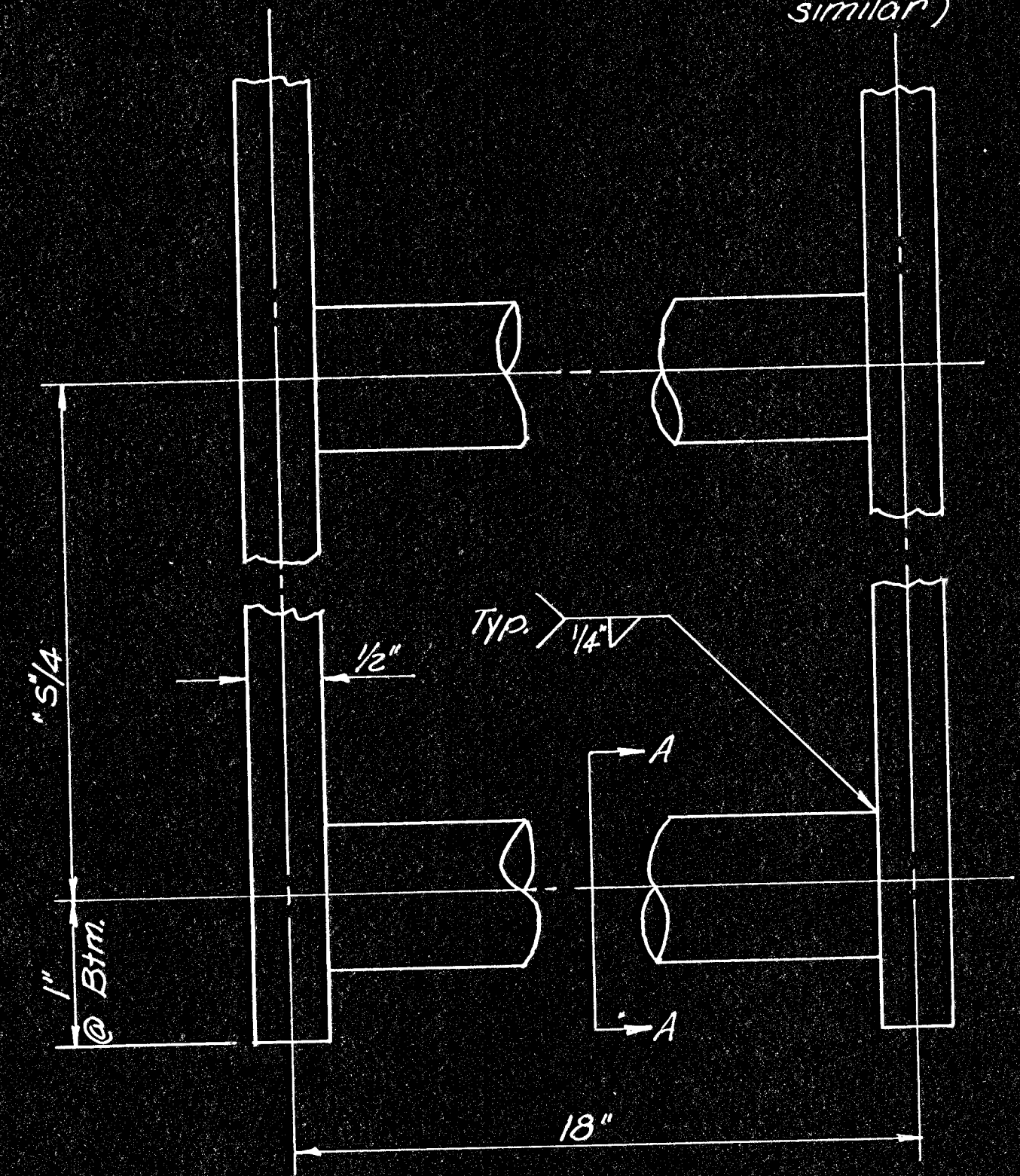
ALUMINUM WELDING AND FABRICATION: All welding and fabrication shall conform to AASHTO Standard Specifications for Highway Signs, Luminaires, and Traffic Signals 1975 Edition and subsequent revisions.

STEEL WELDING: All welding shall conform to K.S.H.C. Standard Specifications and the latest edition AWS Specifications.

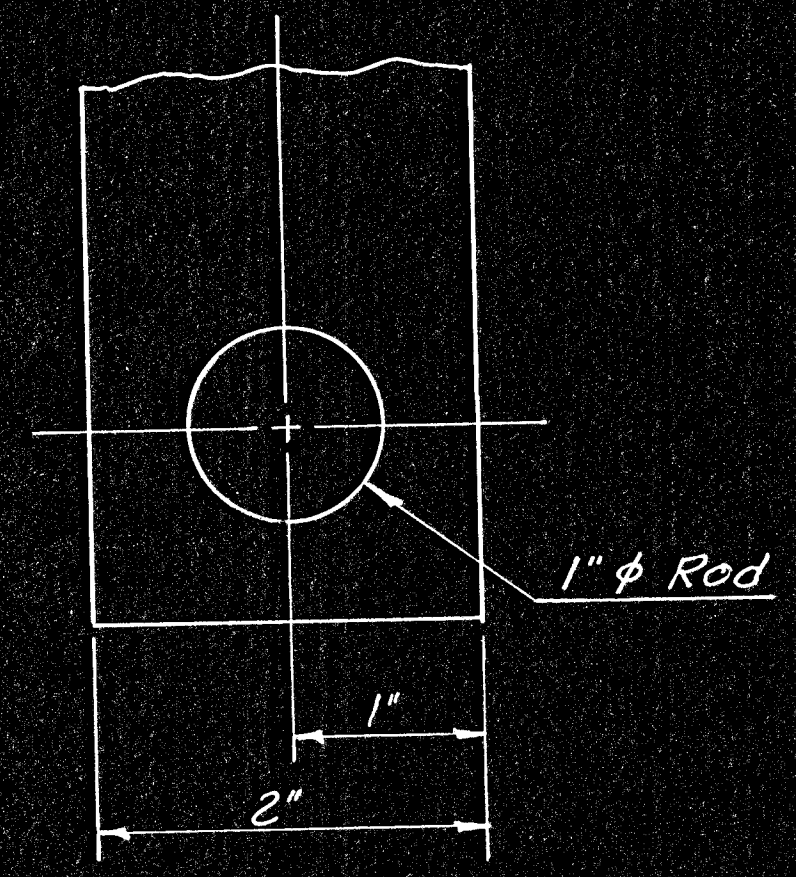


Note: Always mount ladder on outside of end support. See Construction Layout for end support(s) to be used.

MOUNTING DETAILS
(Top shown other connections similar)



LADDER DETAILS



REVISIONS		DATE	BY
1			
2			
3			
4			
5			
6			
7			
8			
9			
10			
11			
12			
13			
14			
15			
16			
17			
18			
19			
20			
21			
22			
23			
24			
25			
26			
27			
28			
29			
30			
31			
32			
33			
34			
35			
36			
37			
38			
39			
40			
41			
42			
43			
44			
45			
46			
47			
48			
49			
50			
51			
52			
53			
54			
55			
56			
57			
58			
59			
60			
61			
62			
63			
64			
65			
66			
67			
68			
69			
70			
71			
72			
73			
74			
75			
76			
77			
78			
79			
80			
81			
82			
83			
84			
85			
86			
87			
88			
89			
90			
91			
92			
93			
94			
95			
96			
97			
98			
99			
100			

DEPARTMENT OF TRANSPORTATION - KANSAS

STANDARD STRUCTURAL SIGN SUPPORTS
SPAN TYPE OVERHEAD
LADDER DETAILS

10-75

SCALE: SHEET NO. 121 OF 143

DESIGNED BY: LES
CHECKED BY: DRE

APPROVED BY: [Signature]

QUANTITIES: [Blank]

QUANTITY CHECKED BY: [Blank]

TRACED BY: [Blank]