

GENERAL NOTES

DESIGN: A.A.S.H.T.O Standard Specifications for Structural Supports for Highway Signs, Luminaires and Traffic Signals, 1975 Edition and subsequent revisions.

PIPE: Aluminum pipe for members ① & ② shall conform to ASTM B-241 or B429 Alloy 6061-T6.

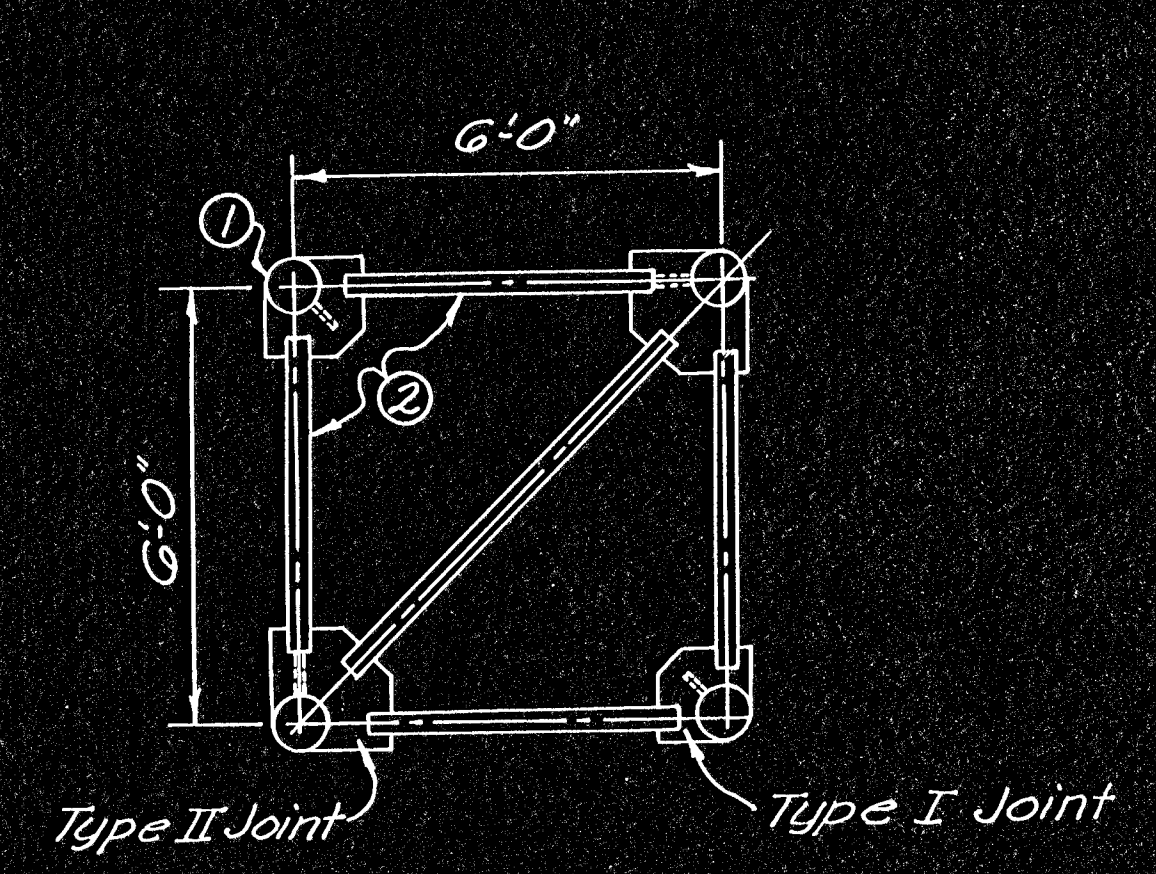
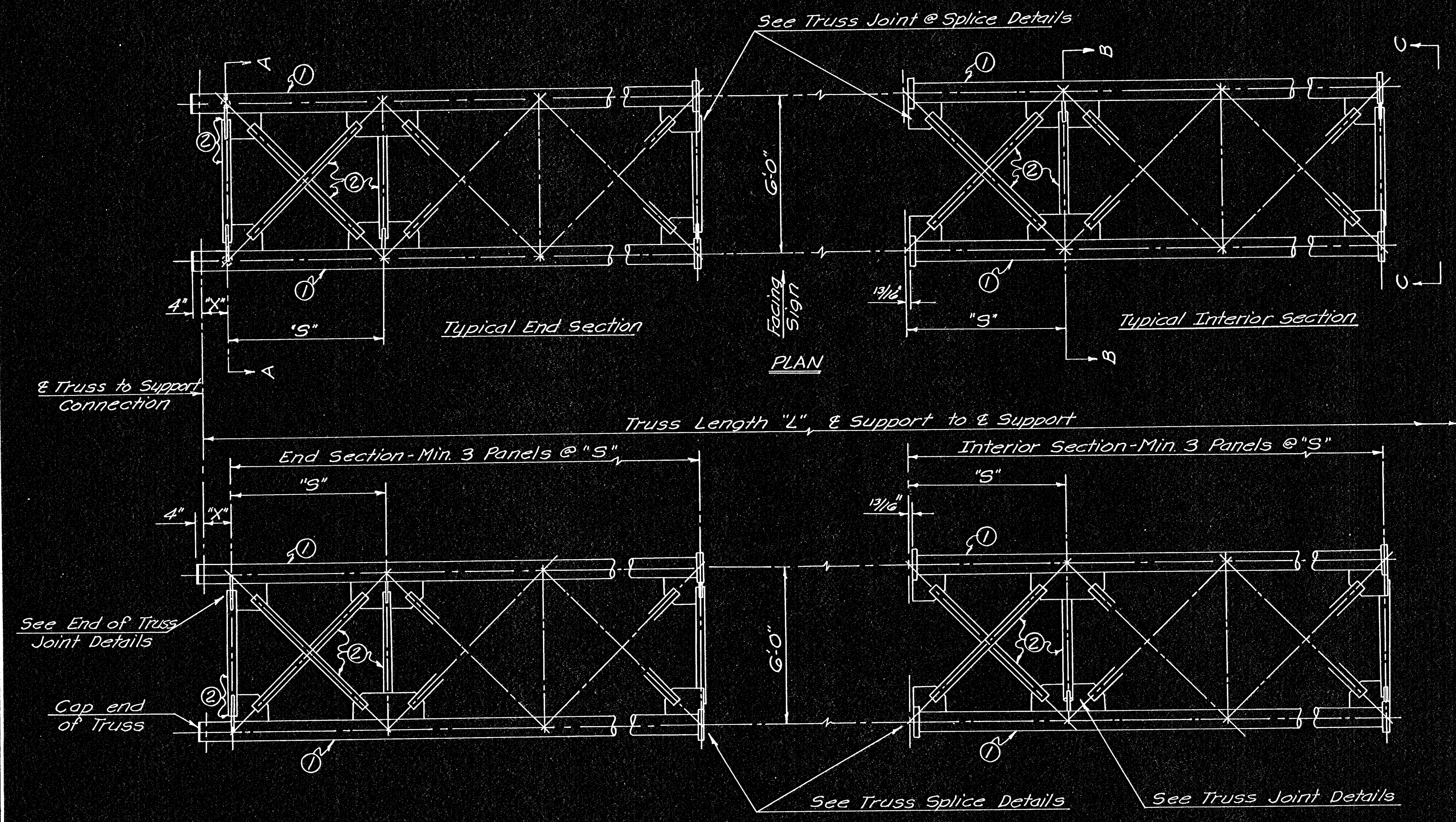
FLANGES: Slip-on Aluminum Welding Flanges, 300 lb A.S.A., ASTM B247 Alloy 6061-T6, Flat Faced.

PLATE: All aluminum plate shall conform to ASTM B209, Alloy 6061-T6, T62, or T651.

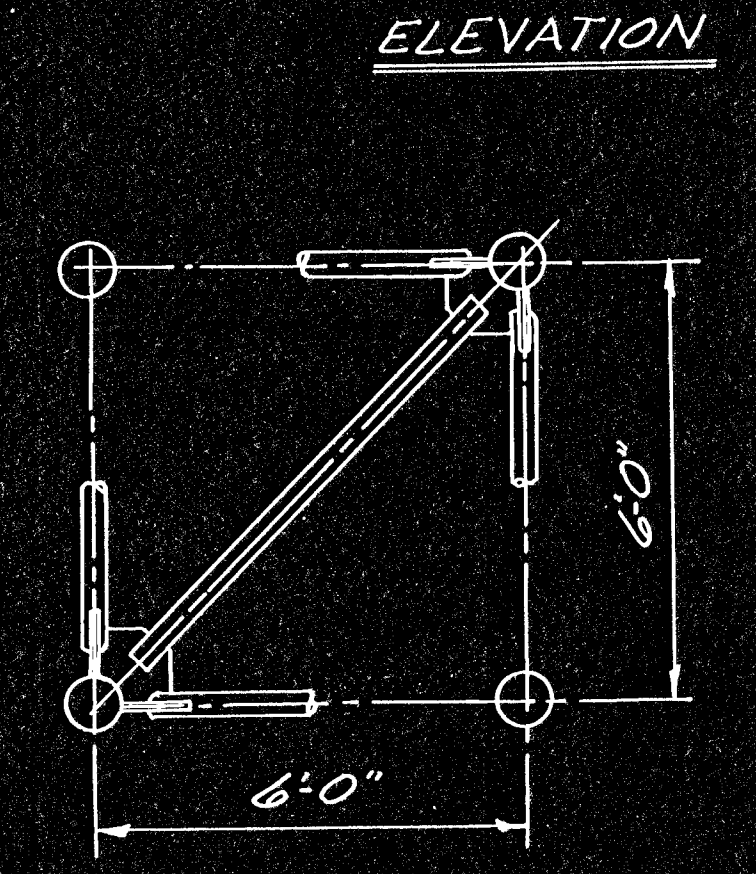
CAP: Caps shall be Gustin-Bacon No.70, or other approved flat cap caps shall be Hot-Dipped galvanized according to ASTM-A123, and shall be installed with set screws. Flat Aluminum caps may be used.

BOLTS: All High Strength bolts, nuts, and washers, shall conform to ASTM-A325 and shall be Hot-Dipped galvanized to meet the requirements of ASTM-A153, Class C.

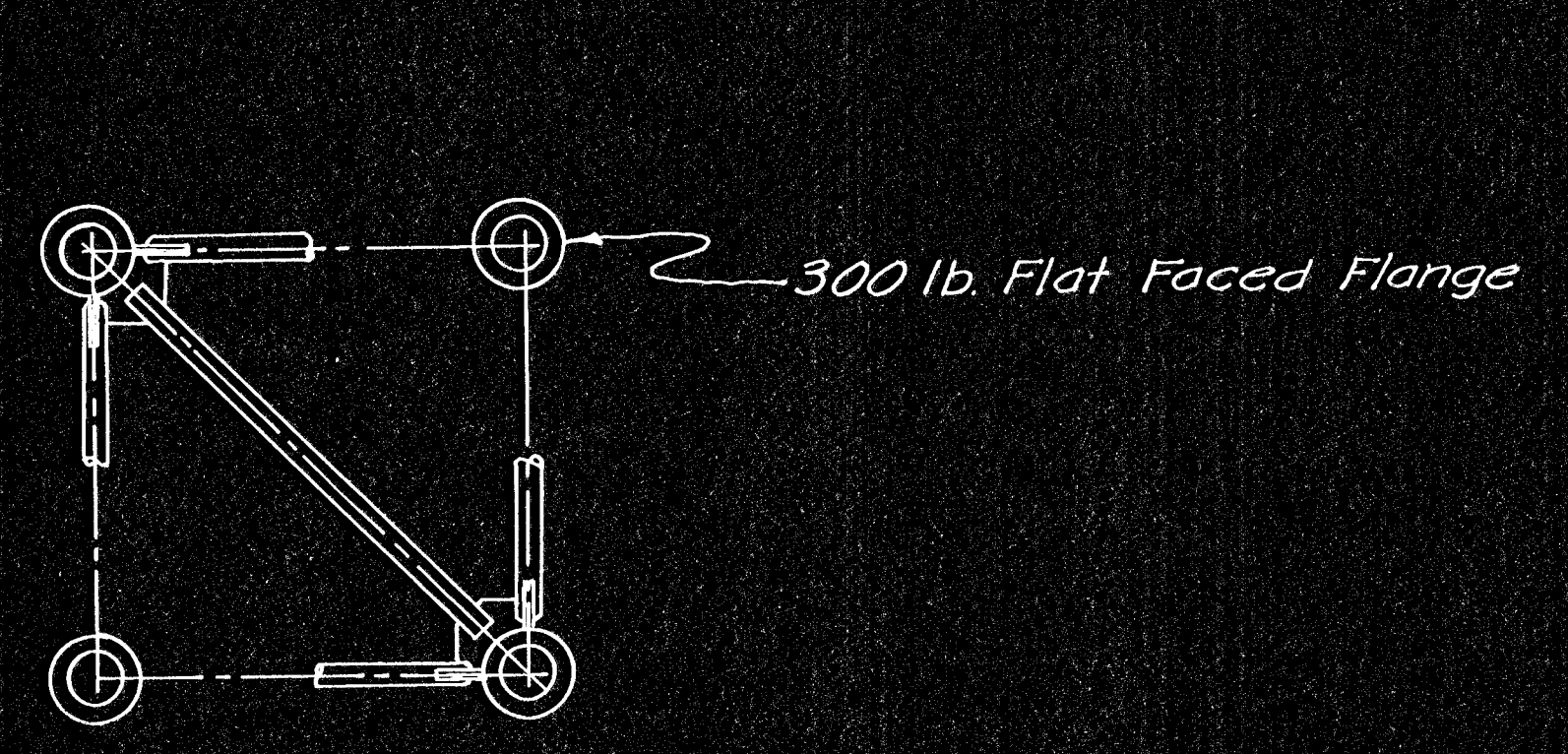
WELDING & FABRICATION: All welding and fabrication shall conform to A.A.S.H.T.O. Standard Specifications for Structural Supports for Highway Signs, Luminaires and Traffic Signals, 1975 Edition and subsequent revisions. Only electrode filler metal 555G shall be used. Before any fabrication is begun under the contract, the Contractor or fabricator shall submit to the Engineer for approval, prints of complete shop drawings. These prints shall be submitted in triplicate for checking and seven copies shall be submitted for final approval and distribution unless more copies are requested. The Contractor shall be responsible for the correctness of his drawings, and for shop fits and field connections, although the drawings may have been approved by the Engineer.



SECTION A-A
See Truss End Joint Details



SECTION B-B
See Truss Joint Details



VIEW C-C
See Truss Splice Details

Note: Member ① is 3.625" O.D. Pipe
Member ② is 4.000" O.D. Pipe
See Construction Layout for wall thickness, "N", "S", "L" and "X".

3					
2					
1					
NO.	DATE	REVISIONS	BY	APP'D	
DEPARTMENT OF TRANSPORTATION-KANSAS STANDARD STRUCTURAL SIGN SUPPORT SPAN TYPE OVERHEAD ALUMINUM TRUSS FRAMING PLAN AND DETAILS					
11-76					
SHEET NO. 124 OF 143	SCALE	APP'D	QUANTITIES	TRACED	
DESIGNED BEM		DDP			RBA
DESIGN CK. RDH	DETAIL CK. RDH	QUAN. CK.			TRACED CK. BEM