

B.M. # 99 Iron Bar 147 Lf
Sta. 291.92 El. 1263.11

NO. ROAD DIV. NO.	STATE	PROJECT NO.	FISCAL YEAR	SHEET NO.	TOTAL SHEETS
5	KANSAS	33W-37-1-35W-1 (23) 42	1958	8	31

REVISED 12/14/58

- * Exc. 128,203 Cu. Yds. (C-20%)
- * Emb. 106,836 Cu. Yds.
- * Incl. 8,750 Cu. Yds. Exc. From 47th Street Interch. Sta. 23150
- * Incl. 11,452 Cu. Yds. Exc. From Sites Furnished by the Contractor and approved as to location, materials, and depth of cut by the Engineer.
- * Incl. 70,310 Cu. Yds. Emb. For 47th Street Interch. Sta. 23150
- * Incl. 3,778 Cu. Yds. Emb. For 47th Bridge Berms
- * Incl. 2,395 Cu. Yds. Emb. For 47th Street Interchange Parapets
- * Note - 15,216 Cu. Yds. Emb. Non-Participation - See Sheet No. 7

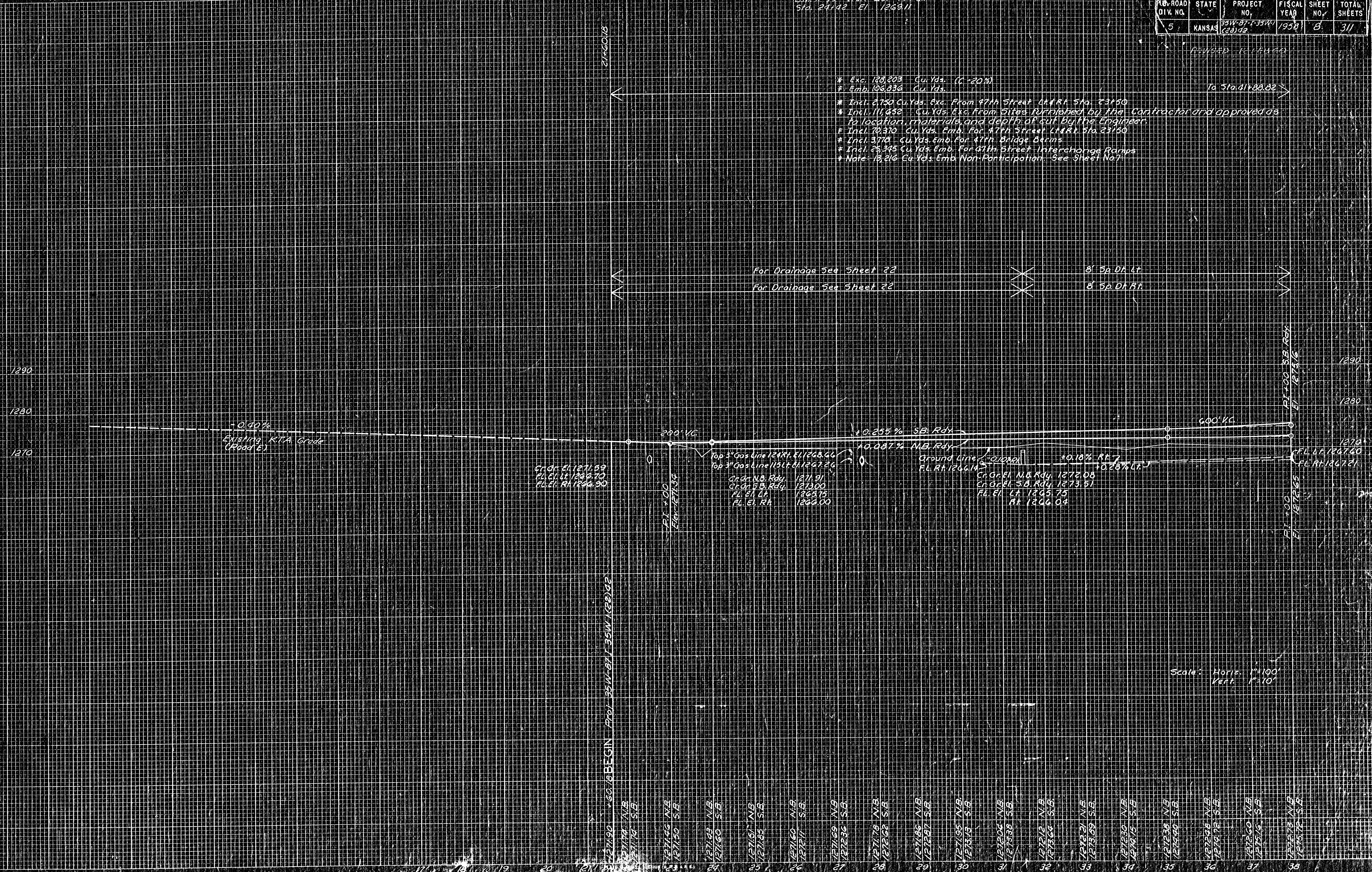
To Sta. 411+88.82

DATE	BY
12-16-58	H. C. ZIEGLER

FINAL SURVEY NOTE BOOK NO.

DATE	BY
12-16-58	H. C. ZIEGLER

ORIGINAL SURVEY NOTE BOOK NO.



Gr. El. 1271.89
Fl. El. LT 1266.70
Fl. El. RT 1266.90

Top 3" Gas Line 1241.81 El. 1265.66
Top 3" Gas Line 1314.81 El. 1267.66
Gr. El. N.B. Rdy. 1271.91
Gr. El. S.B. Rdy. 1273.00
Fl. El. LT 1268.75
Fl. El. RT 1269.00

Ground Line
FL. RT 1266.14
Gr. El. N.B. Rdy. 1272.08
Gr. El. S.B. Rdy. 1273.51
Fl. El. LT 1265.75
Fl. El. RT 1266.04

Scale: Horiz. 1"=100'
Vert. 1"=10'

271+00 BEGIN PVI 135 N-871-35 W 120 1/2

- 271+00 N/B S/B
- 271+05 N/B S/B
- 271+10 N/B S/B
- 271+15 N/B S/B
- 271+20 N/B S/B
- 271+25 N/B S/B
- 271+30 N/B S/B
- 271+35 N/B S/B
- 271+40 N/B S/B
- 271+45 N/B S/B
- 271+50 N/B S/B
- 271+55 N/B S/B
- 271+60 N/B S/B
- 271+65 N/B S/B
- 271+70 N/B S/B
- 271+75 N/B S/B
- 271+80 N/B S/B