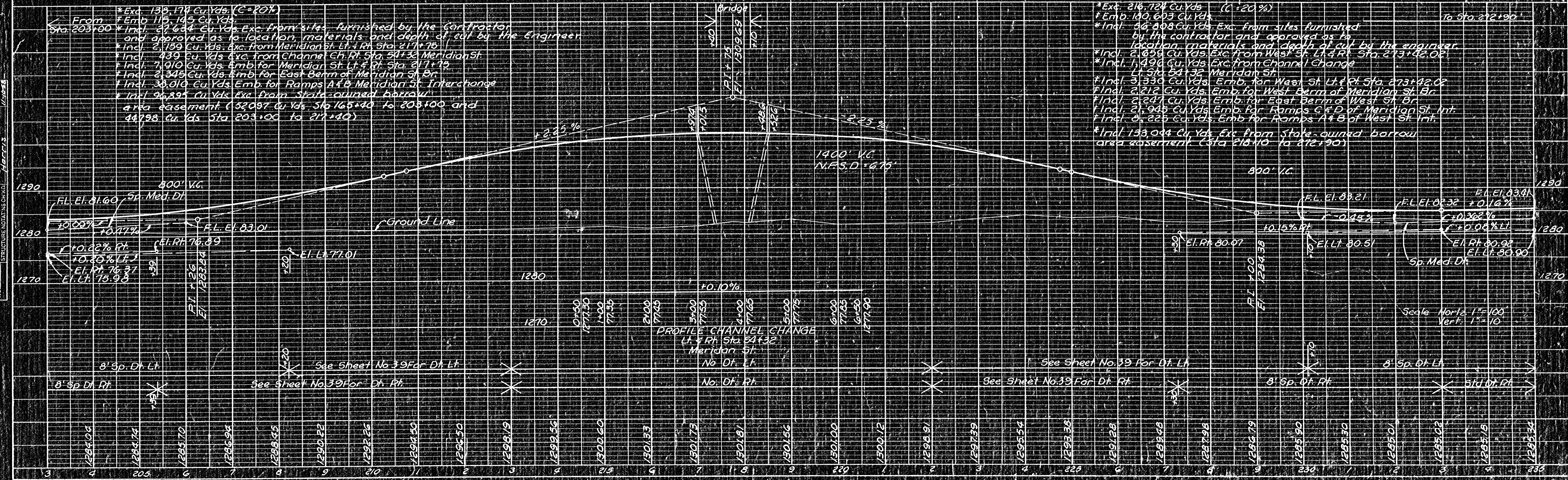
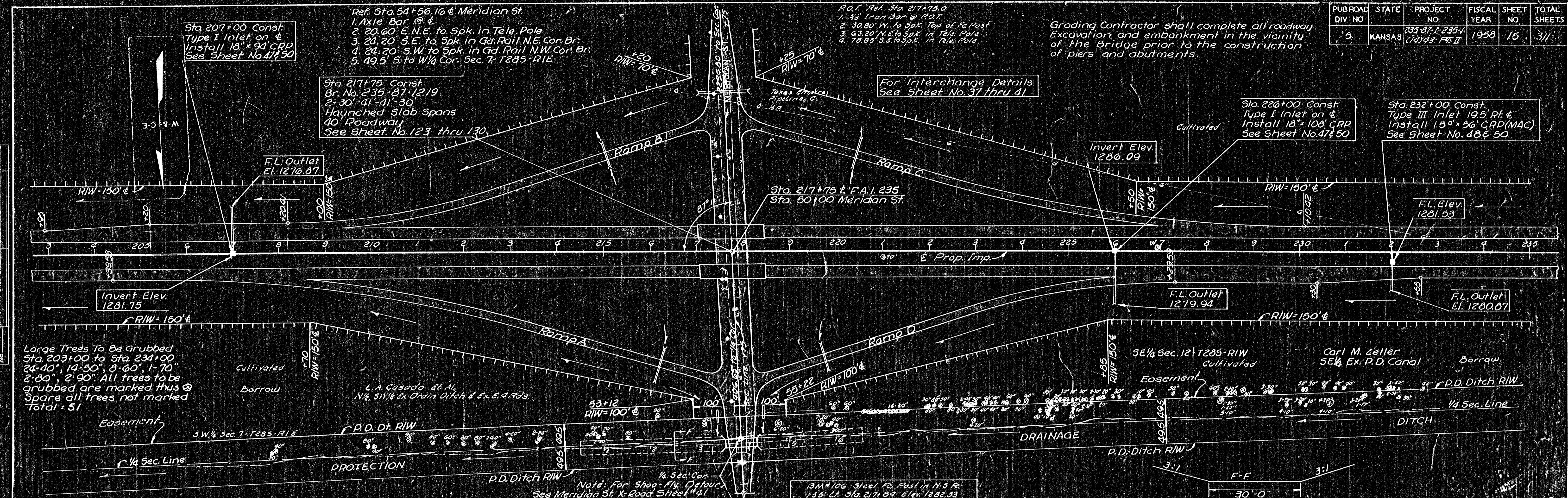


PUB. ROAD DIV. NO.	STATE	PROJECT NO.	FISCAL YEAR	SHEET NO.	TOTAL SHEETS
5	KANSAS	235-87-1-235-1 (14)43 P.C. II	1958	15	311



PLAN
 SUBMITTED: []
 PLOTTED: []
 CHECKED: []
 DATE: []

PROFILE
 SUBMITTED: []
 PLOTTED: []
 CHECKED: []
 DATE: []

Large Trees To Be Grubbed
 Sta. 203+00 to Sta. 234+00
 24'-0", 14'-50", 8'-60", 1'-70",
 2'-80", 2'-90". All trees to be
 grubbed are marked thus @
 Spare all trees not marked
 Total: 51

L.A. Casado et al.
 N 1/4 Sec. 12 T28S-R1W
 5E 1/4 Ex. P.D. Canal

Note: For Shop-File Details
 See Meridian St. Road Sheet #41

Grading Contractor shall complete all roadway
 Excavation and embankment in the vicinity
 of the Bridge prior to the construction
 of the piers and abutments.

For Interchange Details
 See Sheet No. 37 thru 41

Sta. 226+00 Const.
 Type I Inlet on E
 Install 18" x 94" CRP
 See Sheet No. 47 & 50

Sta. 232+00 Const.
 Type III Inlet 19.5 Ft. E
 Install 15" x 56" CRP (MAC)
 See Sheet No. 48 & 50