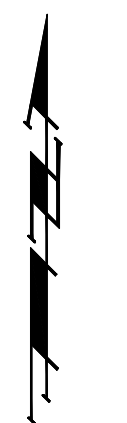


Scale: 1" = 60'



Maintain 9" berm behind inlet to ensure drainage from temporary ditch enters inlet. Incidental to "Site Clearing & Restoration".

Maintain 549 L.F. cut-off trench per detail, sheet 17.

Maintain temporary ditch to ensure positive drainage of sump areas. See detail, sheet 17.

Maintain hay bale barrier per detail, sheet 19.

Maintain 579 L.F. cut-off trench per detail, sheet 14.
PROPOSED POND C (Static WS = 1325.5)
GROUNDWATER
RES. "H" Maintain 5,446 S.Y. erosion control mat.

EROSION CONTROL PLAN LEGEND
(Installation Details Found in the SMP2 Plan)

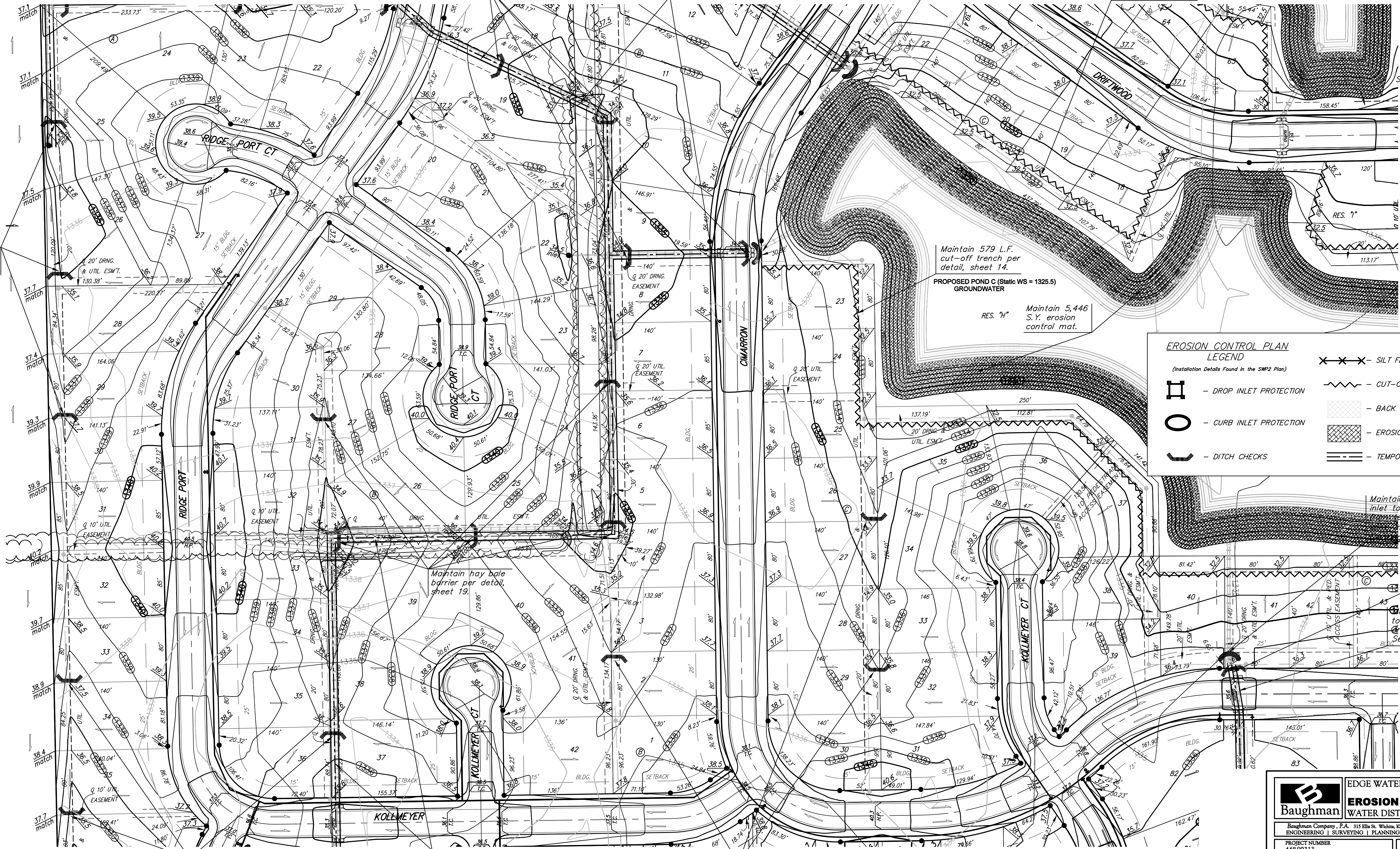
	- DROP INLET PROTECTION		- CUT-OFF TRENCH
	- CURB INLET PROTECTION		- BACK OF CURB PROTECTION
	- DITCH CHECKS		- EROSION CONTROL MAT
	- HAY BALE BARRIER		- TEMPORARY DITCH
	- SILTING FENCING		

NO SCALE

Maintain 9" berm behind inlet to ensure drainage from temporary ditch enters inlet. Incidental to "Site Clearing & Restoration".

Maintain hay bale barrier per detail, sheet 19.

Maintain temporary ditch to ensure positive drainage of sump areas. See detail, sheet 17.



Maintain hay bale barrier per detail, sheet 19.

Maintain hay bale barrier per detail, sheet 19.

Maintain temporary ditch to ensure positive drainage of sump areas. See detail, sheet 17.

Maintain hay bale barrier per detail, sheet 19.

--- 185 --- Existing Grade
--- (185) --- Proposed Grade

Baughman ENGINEERING | SURVEYING | PLANNING | LANDSCAPE ARCHITECTURE

EDGE WATER ADD. - PH. I
EROSION CONTROL PLAN
WATER DISTRIBUTION SYSTEM

Baughman Company, P.A. 315 Ellis St. Wichita, KS 67211 F316-262-7271 F316-262-0149
ENGINEERING | SURVEYING | PLANNING | LANDSCAPE ARCHITECTURE

PROJECT NUMBER 448-90313	DESIGN ATD	DRAWN TMS
REVISIONS:	APPROVED	DATE 11/07
	SCALE Noted	
	SHEET	

15 OF 24

EdgeWater\WuECPlan2 07-05-E837