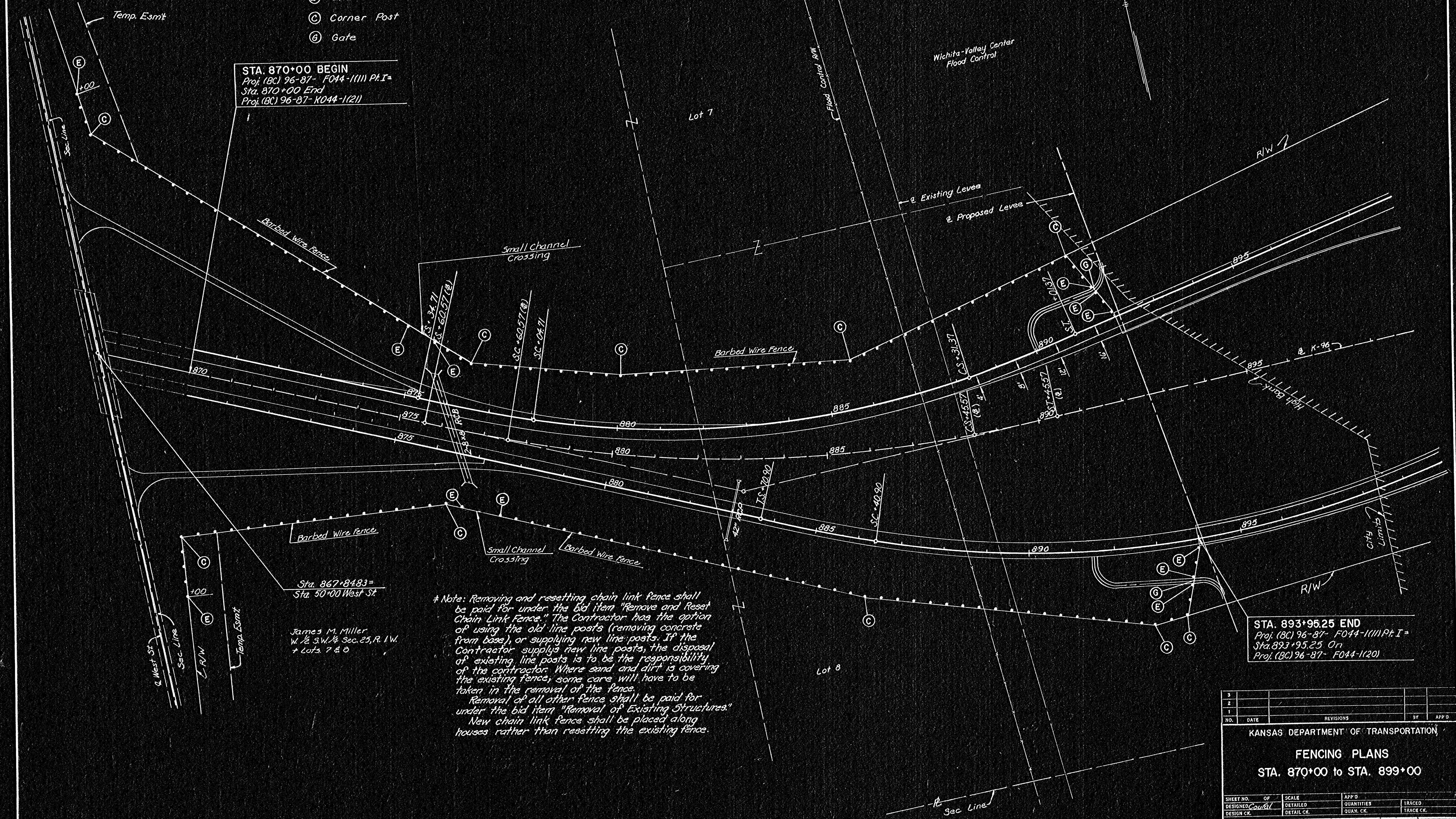


FHWA REGION NO.	STATE	PROJECT NO.	YEAR	SHEET NO.	TOTAL SHEETS
7	KANSAS	96-87-044-1(11)	1976	227	557

Scale 1"=100'

LEGEND

- (E) End Post
- (C) Corner Post
- (G) Gate



STA. 870+00 BEGIN
 Proj. (BC) 96-87- F044-1(11) Pt. I =
 Sta. 870+00 End
 Proj. (BC) 96-87- K044-1(21)

Sta. 867+84.83 =
 Sta. 50+00 West St.

James M. Miller
 W 1/2 S.W. 1/4 Sec. 23, R. 1 W.
 + Lots 7 & 8

* Note: Removing and resetting chain link fence shall be paid for under the bid item "Remove and Reset Chain Link Fence." The Contractor has the option of using the old line posts (removing concrete from base), or supplying new line posts. If the Contractor supplies new line posts, the disposal of existing line posts is to be the responsibility of the contractor. Where sand and dirt is covering the existing fence, some care will have to be taken in the removal of the fence. Removal of all other fence shall be paid for under the bid item "Removal of Existing Structures." New chain link fence shall be placed along houses rather than resetting the existing fence.

STA. 893+95.25 END
 Proj. (BC) 96-87- F044-1(11) Pt. I =
 Sta. 893+95.25 On
 Proj. (BC) 96-87- F044-1(20)

3				
2				
1				
NO.	DATE	REVISIONS	BY	APP'D

KANSAS DEPARTMENT OF TRANSPORTATION
FENCING PLANS
 STA. 870+00 to STA. 899+00

SHEET NO.	OF	SCALE	APP'D
DESIGNED	CAWAL	DETAILED	QUANTITIES
DESIGN CK.	DETAIL CK.	QUAN. CK.	TRACE CK.