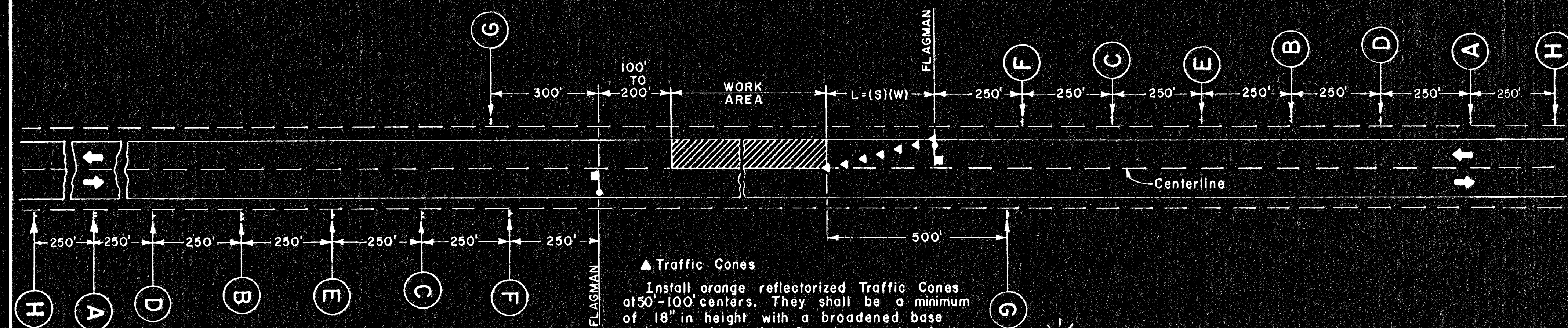


TRAFFIC CONTROL SIGNING FOR ONE-LANE TRAFFIC MOVEMENT THROUGH WORK AREA

FHWA REG. NO.	STATE	PROJECT	FISCAL YEAR	SHEET	TOTAL
7	KANSAS	96-01-044-1136	197	231	557

ONE-LANE TRAFFIC SIGNING (Resurfacing)



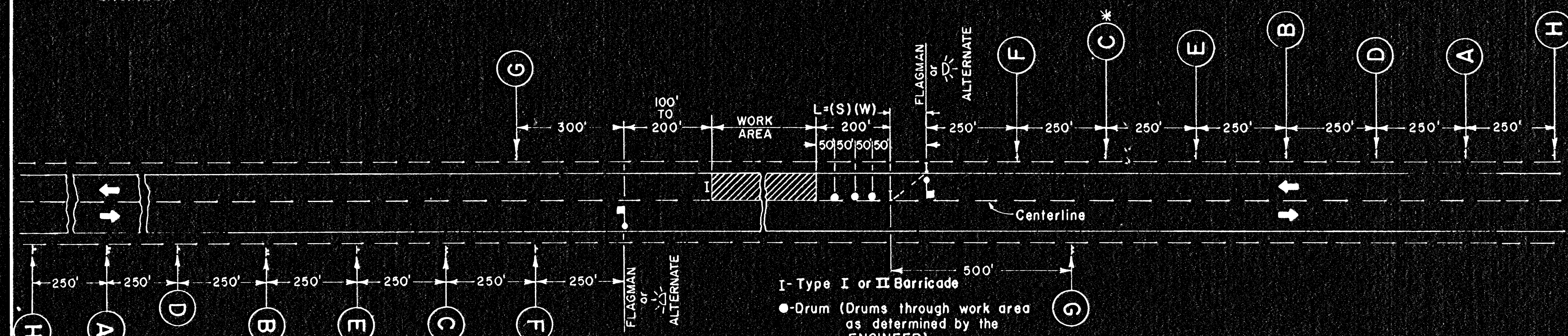
The alternate three color traffic control signals shall comply with Part IV of the 1970 Manual on Uniform Traffic Control Devices for Streets and Highways. Two (2) three color traffic signal units shall be erected facing each direction of traffic. Post mounted signals shall be erected 8' to 15' above pavement centerline grade. Signals suspended over the roadway shall be erected 15' to 19' above pavement centerline grade.

Flagman and sign (W20-7) shall be used if a malfunction of the traffic signal occurs. Timing of traffic signals shall be determined by the ENGINEER.

▲ Traffic Cones
Install orange reflectorized Traffic Cones at 50'-100' centers. They shall be a minimum of 18" in height with a broadened base and may be made of various materials to withstand impact without damage to themselves or to vehicles.

L=Minimum Length of Taper
S=Speed Limit or 85 percentile Speed
W=Width of offset

ONE-LANE TRAFFIC SIGNING (Repair and Surface Overlay)



NOTE:
All traffic control devices shall comply to (I) Section 107 of the 1973 Edition of the Standard Specification and to any Supplemental Specification to this section and (2) the Manual on Uniform Traffic Control Devices For Streets and Highways dated November 13, 1970.

Install Type I or II reflectorized barricades at 50'-100' centers and at right angles to the center of the roadway. Each barricade shall have one yellow steady burning warning light on top.

The first barricade on the approach is to be placed on the shoulder with the end of the barricade in line with the edge of roadway. The last barricade on the approach is to be placed in the closed lane with the end of the barricade out 24" from the centerline of the roadway. The ends of the intermediate barricades are to be placed on a transition line between the above designated points as shown.

The yellow flashing lights placed on advance warning signs shall be Type B High Intensity. Yellow lights placed on Type I or II barricades and drums shall be Type C Steady Burn with two lens. The lens for all lighting devices shall be 7" minimum diameter. The flashing lights are to be regulated to flash 55 to 75 times per minute. The flash duration shall not be less than 8% of time.

Yellow lights mounted on barricades and drums are to be placed on the side nearest the roadway centerline.

I-Type I or II Barricade
● Drum (Drums through work area as determined by the ENGINEER)

Temporary traffic control signs when not in use shall be either covered with an opaque weatherproof material or removed from the recovery area as approved by the ENGINEER. Due to existing conditions the ENGINEER may require a decrease in the spacing between barricades, drums and or signs.

Signs and Markers may be erected on portable supports as a temporary measure. All such installations should be so constructed to yield upon impact.

The hand signaling device used by flagmen shall be a STOP/SLOW sign paddle with a minimum size of 16".

All signs, barricades and drums used to control traffic shall be reflectorized. All signs, barricades, drums and lights shall be securely erected and maintained in good condition at all times.

When no work is in progress all equipment shall be removed from the recovery area and placed or parked at the extreme limits of the right of way or at sites approved by the ENGINEER.

All existing permanent speed limit signs are to be covered with an opaque water-proof material or removed as directed by the ENGINEER.

Existing inappropriate pavement markings leaving the roadway in a confusing condition to motorists, which creates the potential for misdirection, shall be removed. Approved removal procedures include: sandblasting using air or water, high pressure water, steam or superheated water, mechanical grinding or solvents and chemicals. Other methods of removal may be used upon approval of the ENGINEER.

- (A) **W20-1** ROAD CONSTRUCTION 1500 FT. 48"x48"
Type B High Intensity Yellow flashing warning light
- (B) **W20-4** ONE LANE ROAD 1000 FT. 48"x48"
Type B High Intensity Yellow flashing warning light
- (C) **W20-7** FLAGMAN 500 FT. 48"x48"
Type B High Intensity Yellow flashing warning light
- (D) **W3-3** SIGNAL AHEAD 36"x36" 24"x18"
Type B High Intensity Yellow flashing warning light
- (E) **R2-5c** SPEED ZONE AHEAD 24"x30"
- (F) **R4-1** DO NOT PASS 24"x30"
- (G) **R2-1** SPEED LIMIT 24"x30"
- (H) **G20-2** END CONSTRUCTION 60"x24"
- (I) **G20-1** ROAD CONSTRUCTION NEXT * MILES

W20-1 shall have a reflectorized orange background with the legend and inset border opaque black ink. The legend shall be 7" high series 'C' alphabet. The sign is to be erected 1500 FT. in advance of the Flagman's station.

W20-4 shall have a reflectorized orange background with the legend and inset border opaque black ink. The legend shall be 7" high series 'C' alphabet. The sign is to be erected 1000 FT. in advance of the Flagman's station.

W20-7 shall have a reflectorized orange background with the legend and inset border opaque black ink. The legend shall be 7" high series 'C' alphabet. The sign is to be erected 500 FT. in advance of the Flagman's station.

R2-5c shall have a reflectorized silver background with the legend and inset border opaque black ink. The legend shall be 6" high series 'C' alphabet. The sign is to be erected 1250 FT. in advance of the Flagman's station.

R4-1 shall have a reflectorized silver background with the legend and inset border opaque black ink. The legend shall be 6" high series 'D' alphabet. The signs are to be erected as shown on this sheet.

R2-1 shall have a reflectorized silver background with the legend and inset border opaque black ink. The legend shall be series 'E' with SPEED LIMIT 4" high and numerals 10". The signs are to be erected as shown on this sheet. Additional signs are to be erected along the Work Area as directed by the ENGINEER.

* Posted speed limit to be determined by the ENGINEER.

G20-2 shall have a reflectorized orange background with the legend and inset border opaque black ink. The legend shall be 6" high series 'C' alphabet. The sign is to be erected 500 FT. beyond the end of construction.

G20-1 shall have a reflectorized orange background with the legend and inset border opaque black ink. The legend shall be 6" high series 'C' alphabet. The sign is to be erected 250 FT. before the beginning of construction when the construction zone exceeds two (2) miles in length. The * (mileage) shall be shown to the nearest whole mile.

NO.	DATE	REVISIONS	BY	APP.
3	6/21/76	NOTE - Print Marking Removal	J.H.	AFT
4	3/20/76	Rev. Red Flags, Chg. Paddle Size	J.H.	AFT
5	7-7-76	G20-1 Sign & Barricade Colors	JTB	AFT
6	6/20/73	1973 Std. Spec. Note	AFT	AFT
7	2/16-73	G20-1, R2-1 Signs, Taper to 1/2 mile, 1/2 mile	J.H.	AFT

KANSAS DEPARTMENT OF TRANSPORTATION
CONSTRUCTION TRAFFIC CONTROL DEVICES
AND LOCATIONS FOR
TWO-LANE HIGHWAY
ONE-LANE CLOSED

1-17-72

STD. 743.1

SHEET NO. 1	OF 1	SCALE	APP. D. <i>John J. Logan</i>
DESIGNED GM	DETAIL GM	QUANTITIES GM	TRACER GM
DESIGN CR. AFT	DETAIL CR. AFT	QUAN. CR.	TRACER CR. AFT