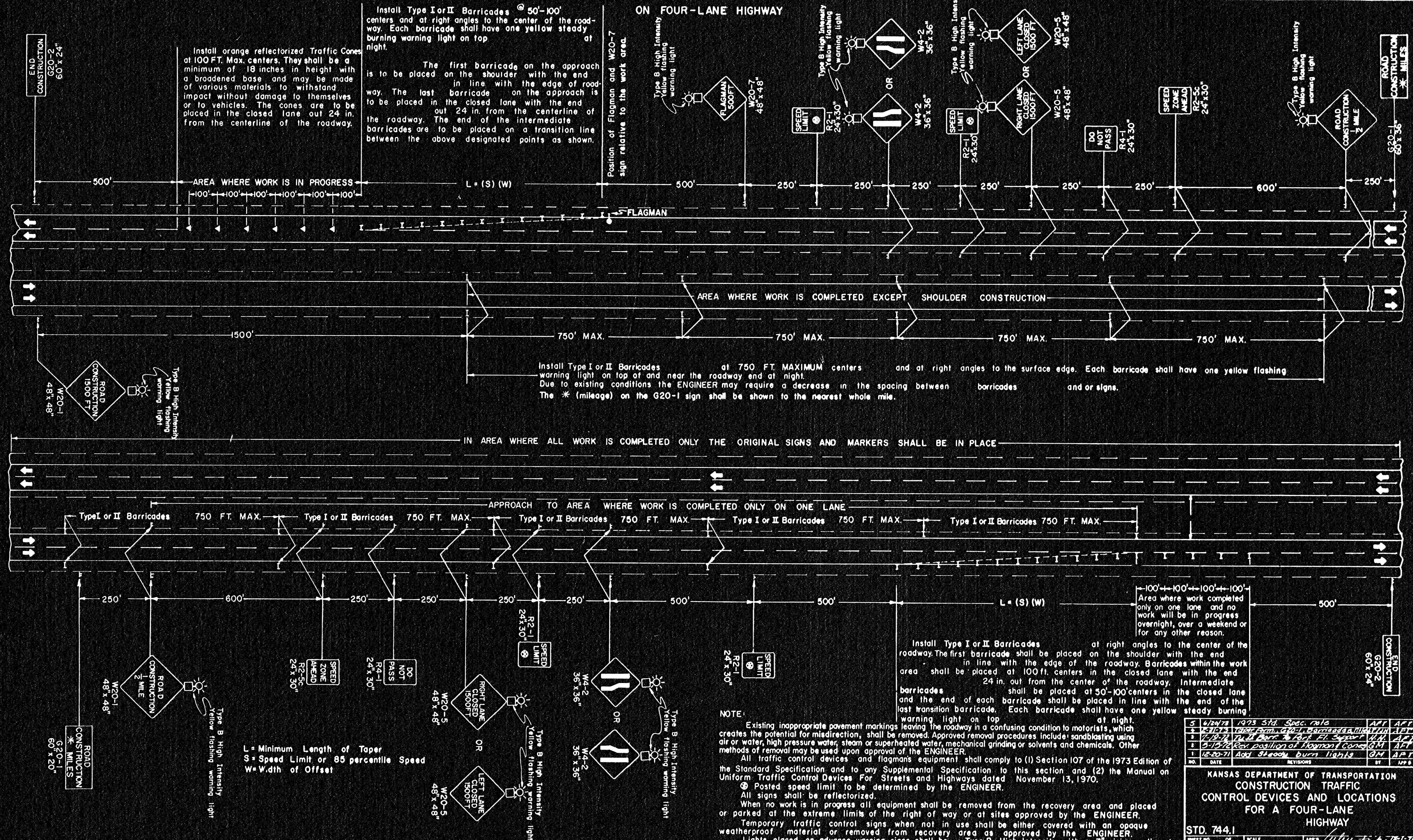


# TRAFFIC CONTROL SIGNING FOR TRAFFIC MOVEMENT THROUGH CONSTRUCTION ON FOUR-LANE HIGHWAY

FHWA DIST. NO.	STATE	PROJECT NO.	YEAR	SHEET NO.	TOTAL SHEETS
7	KANSAS	96-87-044-(111) & (113)	1976	252	557



Install orange reflectorized Traffic Cones at 100 FT. Max. centers. They shall be a minimum of 18 inches in height with a broadened base and may be made of various materials to withstand impact without damage to themselves or to vehicles. The cones are to be placed in the closed lane out 24 in. from the centerline of the roadway.

Install Type I or II Barricades @ 50'-100' centers and at right angles to the center of the roadway. Each barricade shall have one yellow steady burning warning light on top at night.

The first barricade on the approach is to be placed on the shoulder with the end in line with the edge of roadway. The last barricade on the approach is to be placed in the closed lane with the end out 24 in. from the centerline of the roadway. The end of the intermediate barricades are to be placed on a transition line between the above designated points as shown.

Install Type I or II Barricades at 750 FT. MAXIMUM centers and at right angles to the surface edge. Each barricade shall have one yellow flashing warning light on top of and near the roadway end at night.

Due to existing conditions the ENGINEER may require a decrease in the spacing between barricades and or signs.

The \* (mileage) on the G20-1 sign shall be shown to the nearest whole mile.

Area where work completed only on one lane and no work will be in progress overnight, over a weekend or for any other reason.

Install Type I or II Barricades at right angles to the center of the roadway. The first barricade shall be placed on the shoulder with the end in line with the edge of the roadway. Barricades within the work area shall be placed at 100 ft. centers in the closed lane with the end 24 in. out from the center of the roadway. Intermediate barricades shall be placed at 50'-100' centers in the closed lane and the end of each barricade shall be placed in line with the end of the last transition barricade. Each barricade shall have one yellow steady burning warning light on top at night.

L = Minimum Length of Taper  
S = Speed Limit or 85 percentile Speed  
W = W.dth of Offset

NOTE:  
Existing inappropriate pavement markings leaving the roadway in a confusing condition to motorists, which creates the potential for misdirection, shall be removed. Approved removal procedures include: sandblasting using air or water, high pressure water, steam or superheated water, mechanical grinding or solvents and chemicals. Other methods of removal may be used upon approval of the ENGINEER.

All traffic control devices and flagman's equipment shall comply to (1) Section 107 of the 1973 Edition of the Standard Specification and to any Supplemental Specification to this section and (2) the Manual on Uniform Traffic Control Devices For Streets and Highways dated November 13, 1970.

Posted speed limit to be determined by the ENGINEER.

All signs shall be reflectorized.

When no work is in progress all equipment shall be removed from the recovery area and placed or parked at the extreme limits of the right of way or at sites approved by the ENGINEER.

Temporary traffic control signs when not in use shall be either covered with an opaque weatherproof material or removed from recovery area as approved by the ENGINEER.

Lights placed on advance warning signs shall be Type B High Intensity with a 7" minimum diameter lens, regulated to flash 55 to 75 times per minute. The flash duration shall not be less than 8% of time.

NO.	DATE	REVISIONS	BY	APP'D.
5	4/24/78	1973 Std. Spec. Calc	AM	APF
4	2/15/78	Change from 1970 to 1973 Standard Spec. 11/11/77	AM	APF
3	1/10/77	Change from 1970 to 1973 Standard Spec. 11/11/77	AM	APF
2	3-15-76	Rev. position of No. 1111 cones	AM	APF
1	12-20-71	Add shock burn lights	AM	APF

**KANSAS DEPARTMENT OF TRANSPORTATION  
CONSTRUCTION TRAFFIC  
CONTROL DEVICES AND LOCATIONS  
FOR A FOUR-LANE  
HIGHWAY**

**STD. 744.1**

SHEET NO. OF	SCALE	APP'D.
DESIGNED BY	DETAILED BY	QUANTITIES
DESIGNED BY	DETAILED BY	QUAN. CHECKED

DATE: 11/11/77