

BENCHMARK:
 BM # 1 - City of Wichita Disc in the Northwest Corner of 37th Street North and Womer Elev. = 1324.06 MSL
 BM # 2 - "X" Cut on the Top of Curb in the NE Corner of the Parking Lot for The Word of Life Church at 37th Street North & Meridian. Elev. = 1323.11 MSL
 BM # 3 - RR Spike in the East Face of Light Pole at the Southwest Corner of 34th Street North & Meridian. Elev. = 1320.32 MSL

Trim or Remove Trees Only as Necessary for Construction and with Approval of the Engineer. Cost to be Included in Bid Item "Site Clearing & Restoration"

Sta. 0+00, Begin Line 1
 Verify Depth and Location of Existing 10" Pipe Prior to Construction.
 Const. Standard Manhole Over Existing 10" Pipe.
 Top Elev. = 1319.30

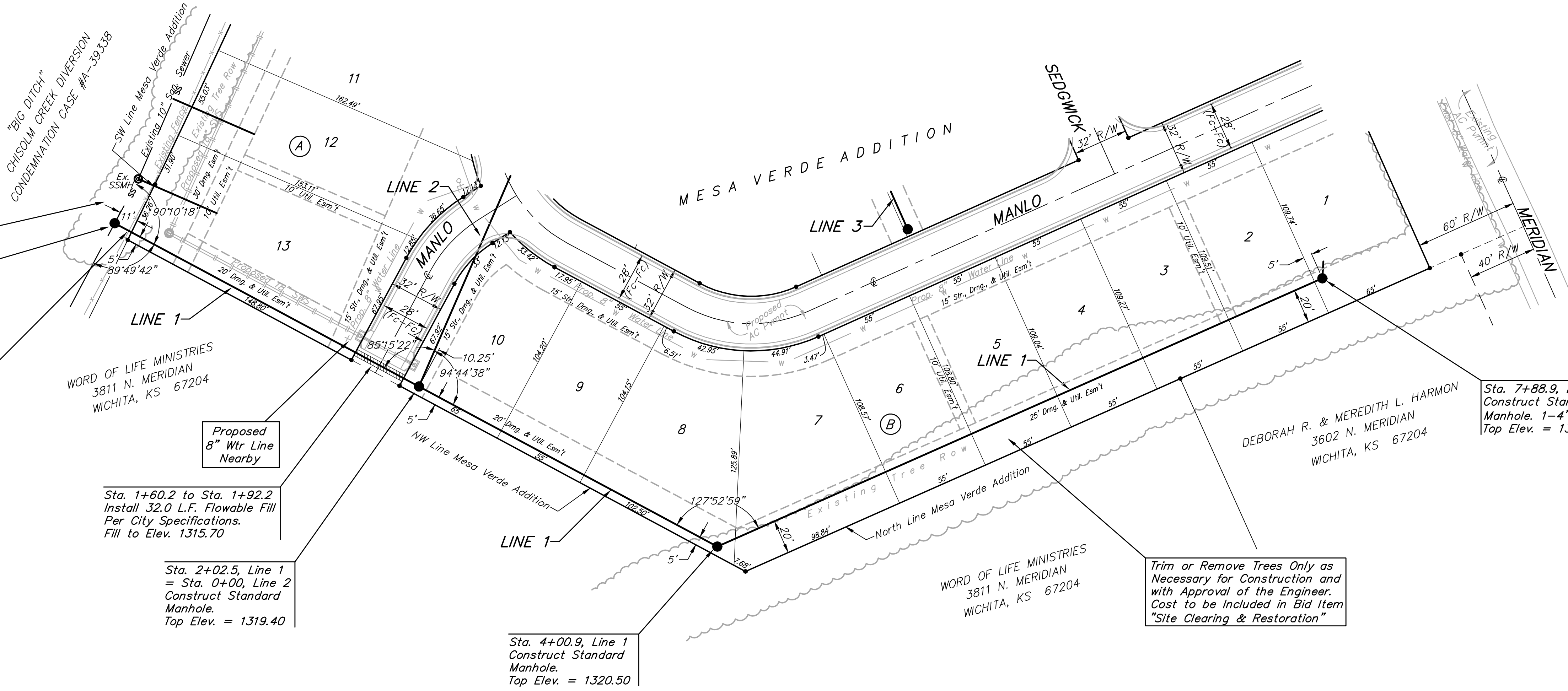
Remove & Replace Existing Fence Only as Necessary for Construction. Cost to be Included in Bid Item "Site Clearing & Restoration"

Sta. 1+60.2 to Sta. 1+92.2
 Install 32.0 L.F. Flowable Fill Per City Specifications.
 Fill to Elev. 1315.70

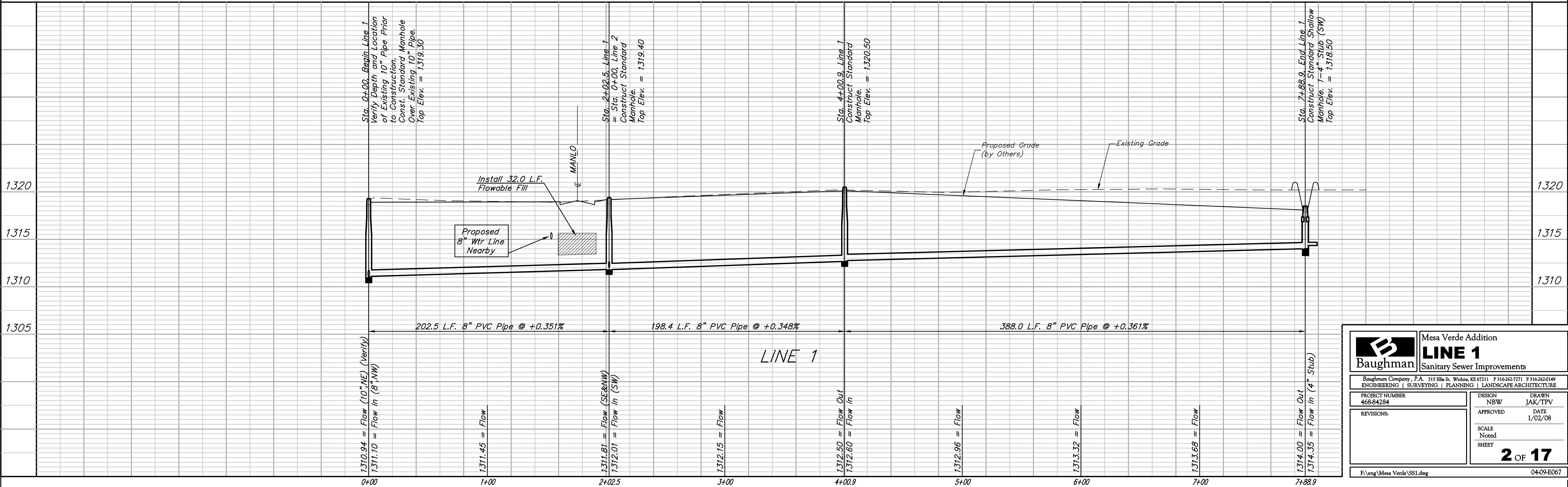
Sta. 2+02.5, Line 1 = Sta. 0+00, Line 2
 Construct Standard Manhole.
 Top Elev. = 1319.40

Sta. 4+00.9, Line 1
 Construct Standard Manhole.
 Top Elev. = 1320.50

Sta. 7+88.9, End Line 1
 Construct Standard Shallow Manhole. 1-4" Stub (SW)
 Top Elev. = 1318.50



SCALE:
 1" = 40' HORIZONTAL
 1" = 5' VERTICAL



		Mesa Verde Addition	
		LINE 1	
Sanitary Sewer Improvements			
<small>Baughman Company, P.A. 315 Ellis St. Wichita, KS 67211 P 316-262-7271 F 316-262-0149 ENGINEERING SURVEYING PLANNING LANDSCAPE ARCHITECTURE</small>			
PROJECT NUMBER 468-84284	DESIGN NBW	DRAWN JAK/TPV	
REVISIONS:	APPROVED	DATE 1/02/08	
	SCALE Noted		
	SHEET		
		2 OF 17	
F:\eng\Mesa Verde\SS1.dwg		04-09-ED07	