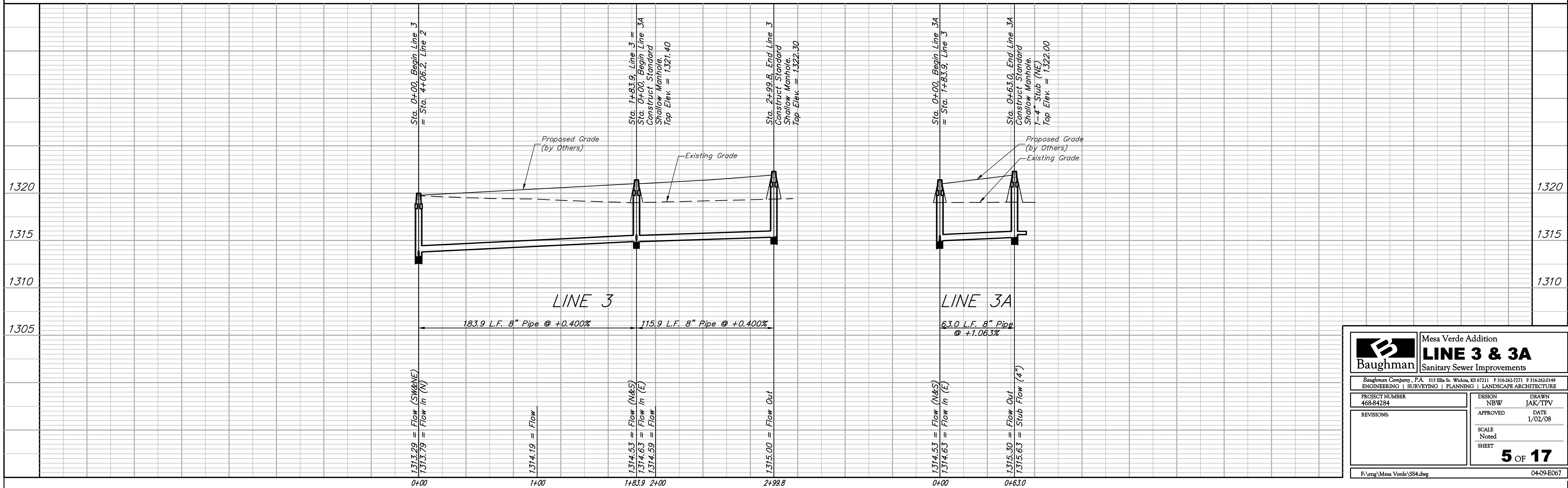
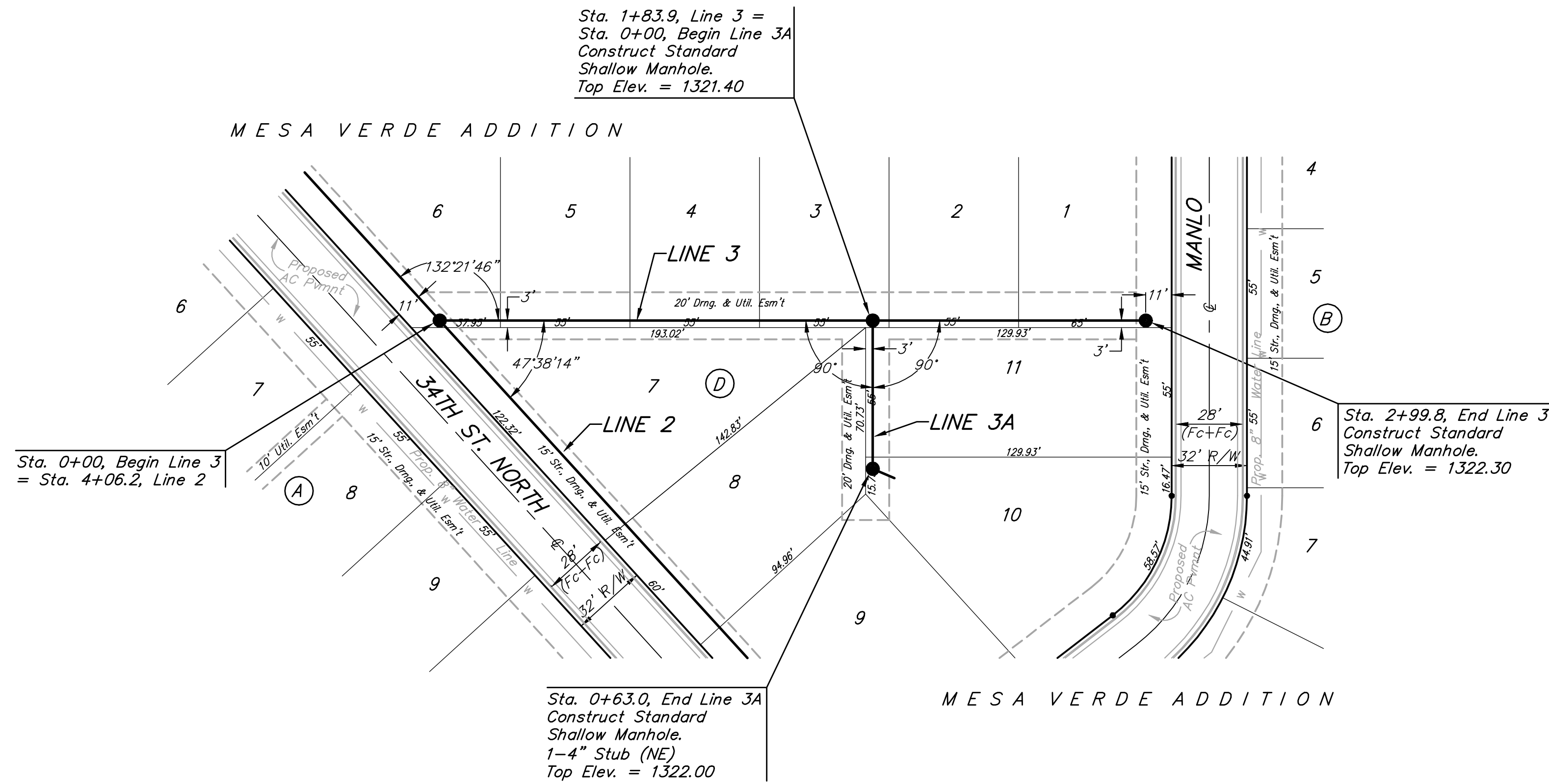


BENCHMARK:
 BM # 1 - City of Wichita Disc in the Northwest Corner of 37th Street North and Womer Elev. = 1324.06 MSL
 BM # 2 - 1" Cut on the Top of Curb in the NE Corner of the Parking Lot for The Word of Life Church at 37th Street North & Meridian. Elev. = 1323.11 MSL
 BM # 3 - RR Spike in the East Face of Light Pole at the Southwest Corner of 34th Street North & Meridian. Elev. = 1320.32 MSL

SCALE:
 1" = 40' HORIZONTAL
 1" = 5' VERTICAL



Baughman		Mesa Verde Addition	
		LINE 3 & 3A	
		Sanitary Sewer Improvements	
Baughman Company, P.A. 315 Ellis St. Wichita, KS 67211 P 316-262-7271 F 316-262-0149			
ENGINEERING SURVEYING PLANNING LANDSCAPE ARCHITECTURE			
PROJECT NUMBER 468-84284	DESIGN NBW	DRAWN JAK/TPV	
REVISIONS:	APPROVED	DATE 1/02/08	
	SCALE Noted		
	SHEET		
			5 OF 17
F:\eng\Mesa Verde\SS4.dwg			04-09-ED07