

GENERAL NOTES

- UNLESS SHOWN OR STATED OTHERWISE ON THESE DRAWINGS, MATERIALS AND CONSTRUCTION SHALL BE IN ACCORDANCE WITH CITY OF WICHITA CONCRETE PAVEMENT AND ASPHALTIC CONCRETE PAVEMENT SPECIFICATIONS.
- CONTRACTOR WILL BE REQUIRED TO PROVIDE A MINIMUM ADVANCE NOTICE OF SEVENTY-TWO (72) HOURS TO UTILITY COMPANIES PRIOR TO STARTING ANY EXCAVATION AS FOLLOWS:
KANSAS ONE-CALL
1-800-344-7233
OR 687-2470 (LOCAL WICHITA)
THE CONTRACTOR MUST NOTIFY THE FOLLOWING IN CASE OF AN EMERGENCY:

SBC (TELEPHONE) 800-870-8390
COX COMMUNICATIONS (CABLE) 262-0661
WESTAR (ELECTRIC) 383-8600
KANSAS GAS SERVICE (GAS) 832-3101
CITY OF WICHITA WATER & SEWER MAINT. 262-6000
AQUILA (GAS) 800-303-0357
- THE CONTRACTOR SHALL BE RESPONSIBLE FOR PRESERVING PROPERTY IRONS. THE CONTRACTOR WILL BE REQUIRED TO RE-ESTABLISH ANY PROPERTY IRONS WHICH ARE DAMAGED OR DESTROYED BY HIS CONSTRUCTION OPERATIONS. SUCH IRONS SHALL BE RE-ESTABLISHED BY A LICENSED LAND SURVEYOR IN ACCORDANCE WITH STATE LAWS.
- EXISTING UTILITIES AND THEIR LOCATIONS, AS SHOWN ON THE PLANS REPRESENT THE BEST INFORMATION OBTAINABLE FOR DESIGN. LOCATION INFORMATION HAS BEEN OBTAINED FROM THE VARIOUS UTILITY COMPANIES AND IS EITHER FROM COMPANY RECORD DRAWINGS OR COMPANY PROVIDED FIELD LOCATIONS. THE PLAN LOCATIONS SHOWN ARE NOT GUARANTEED. ADDITIONAL EXISTING UTILITIES MAY ALSO BE ENCOUNTERED.
- RUBBLE FROM THE REMOVAL OF MISCELLANEOUS STRUCTURES AND EXCESS EXCAVATION WHICH IS TO BE WASTED SHALL BE DISPOSED OF ON SITES TO BE PROVIDED BY THE CONTRACTOR. THESE SITES SHALL BE APPROVED BY THE ENGINEER AS TO SUITABILITY, APPEARANCE AND SITE LOCATION. LOCATIONS THAT, IN THE OPINION OF THE ENGINEER, WILL LEAVE AN UNSIGHTLY APPEARANCE WILL NOT BE APPROVED. ALL DISPOSAL SITES MUST BE APPROVED BY THE KANSAS DEPARTMENT OF HEALTH AND ENVIRONMENT. MATERIAL EITHER STOCKPILED OR DISPOSED OF IN A FLOOD PLAIN WOULD REQUIRE A KANSAS STATE BOARD OF AGRICULTURE PERMIT. ANY MATERIAL DUMPED IN WATERS OF THE UNITED STATES OR WETLANDS IS SUBJECT TO U.S. CORPS OF ENGINEERS PERMITTING REGULATIONS. ANY MATERIAL BURIED OR STOCKPILED BEYOND APPROVED CONSTRUCTION LIMITS WOULD REQUIRE ADDITIONAL ARCHAEOLOGICAL INVESTIGATIONS UNLESS BURIED IN A PREVIOUSLY APPROVED BORROW LOCATION.
- THIS PROJECT INCLUDES A CERTAIN AMOUNT OF ROLL TYPE CURB CONSTRUCTION. ROLL CURBS SHALL BE DEPRESSED THROUGH ALL DRIVEWAY OPENINGS WHEN SUCH DRIVES ARE CONSTRUCTED AS A PART OF THE PROJECT. NO MORE THAN 2 DRIVES 20 FEET IN WIDTH OR EQUIVALENT COMBINATIONS THEREOF ARE TO BE CONSTRUCTED WITH THIS PROJECT.
- TRANSITION CURB FROM FULL HEIGHT COMBINATION CURB AND GUTTER TO ROLL TYPE COMBINATION CURB AND GUTTER IS TO BE PAID AS BID FOR LINEAL FEET COMBINED CURB AND GUTTER (3 5/8" ROLL).
- A SAW CUT OF AT LEAST ONE-HALF THE DEPTH OF THE EXISTING SURFACE COURSES OR ONE-FOURTH THE DEPTH OF THE EXISTING TOTAL PAVEMENT THICKNESS SHALL BE PROVIDED AT LOCATIONS WHERE PROPOSED CONSTRUCTION ABUTS AN EXISTING SURFACE OR PAVEMENT FOR WHICH PARTIAL REMOVAL OF THAT SURFACE OR PAVEMENT IS REQUIRED. SAW JOINT TO FACILITATE REMOVAL WITHIN THREE (3) FEET OF EXISTING JOINTS WILL NOT BE PERMITTED AND FOR SUCH INSTANCES THE LIMITS OF REMOVAL SHALL EXTEND TO THE EXISTING JOINT. SUCH SAW CUTS WILL NOT BE PAID FOR DIRECTLY AND THIS COST SHALL BE CONSIDERED AS SUBSIDIARY TO THE REMOVAL OF SURFACE OR PAVEMENT.
- ALL AREAS DISTURBED WITH THE EXCEPTION OF PROPOSED STREETS SHALL BE SEEDED AND FERTILIZED AS FOLLOWS:
K31 FESCUE @ 200 LBS/ACRE
10-20-10 @ 350 LBS/ACRE
- ALL SEEDING AREAS SHALL BE IMMEDIATELY MULCHED W/ PRAIRIE HAY AT 2 TONS/ACRE. ANCHOR MULCH BY CRIMPING INTO TOPSOIL WITH SUITABLE MECHANICAL EQUIPMENT.
- SEEDING AREAS SHALL BE PREPARED FOR PLANTING WITH COMMON AGRICULTURAL TECHNIQUES. ALL RESERVE AREAS SHALL BE FINE GRADED USING SMALL EQUIPMENT. REMOVE EXISTING GRASS, VEGETATION AND TURF. DO NOT MIX INTO SURFACE SOIL. LOOSEN SOIL TO A DEPTH OF AT LEAST 6 INCHES. GRADE AREAS TO A SMOOTH UNIFORM SURFACE PLANE. ROLL, RAKE, AND REMOVE RIDGES AND FILL DEPRESSIONS. THE SURFACE SHALL BE FREE FROM STICKS, SMALL STONES, AND OTHER EXTRANEOUS MATERIALS. APPROVE WITH OWNER'S REPRESENTATIVE BEFORE PLANTING.
- ALL SEED SHALL BE DISTRIBUTED WITH AN ACCEPTABLE DRILL INTENDED FOR SUCH OPERATIONS, OR OTHER EQUIPMENT APPROVED BY THE OWNER'S REPRESENTATIVE. SEEDING DEPTH SHALL BE 1/2".
- OTHER PUBLIC OR PRIVATE IMPROVEMENT PROJECTS MAY BE UNDERWAY SIMULTANEOUSLY. THE CONTRACTOR SHALL COORDINATE WITH ANY CONTRACTORS CONSTRUCTING OTHER PORTIONS OF THE SURROUNDING PROJECTS.

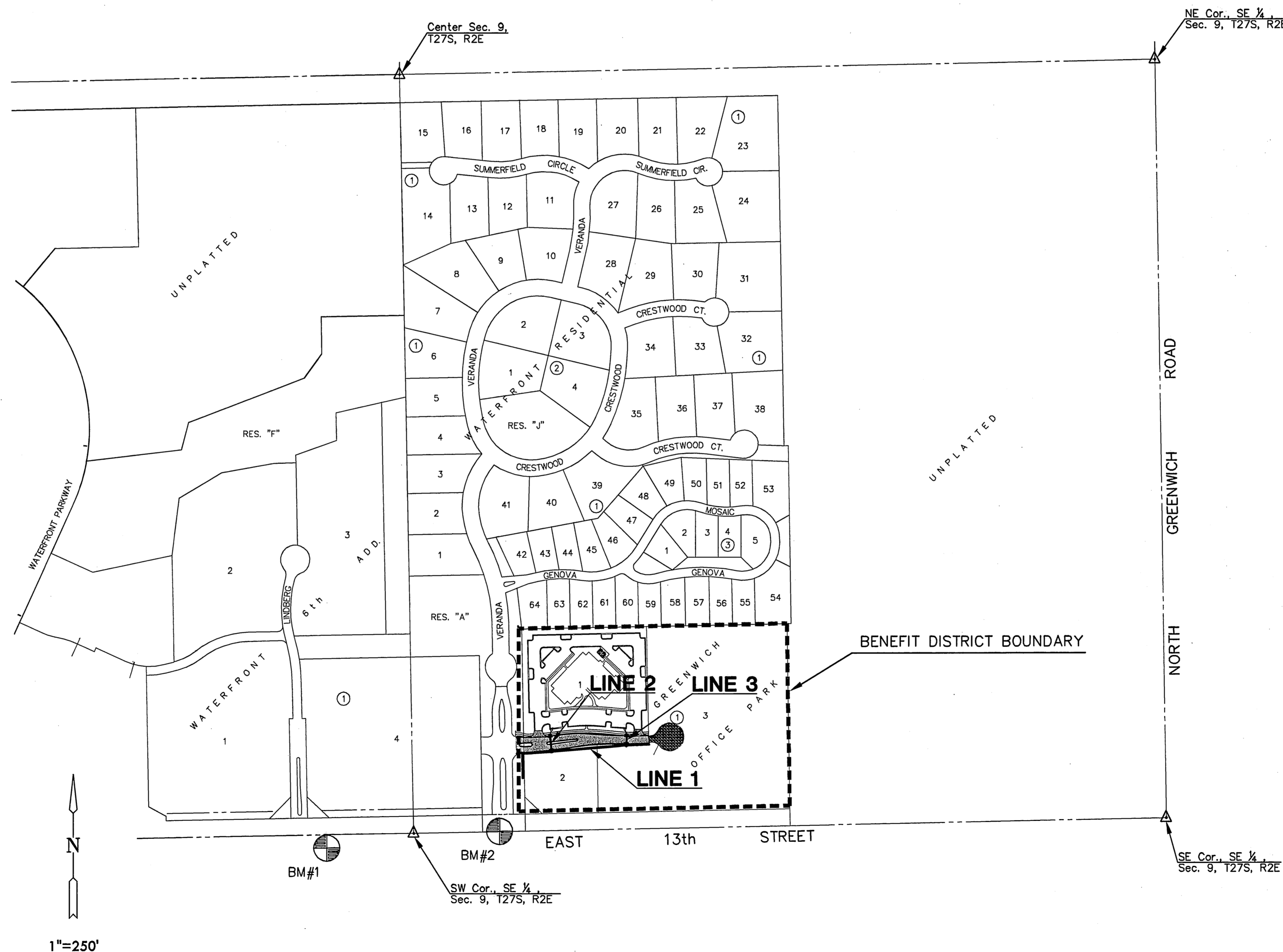
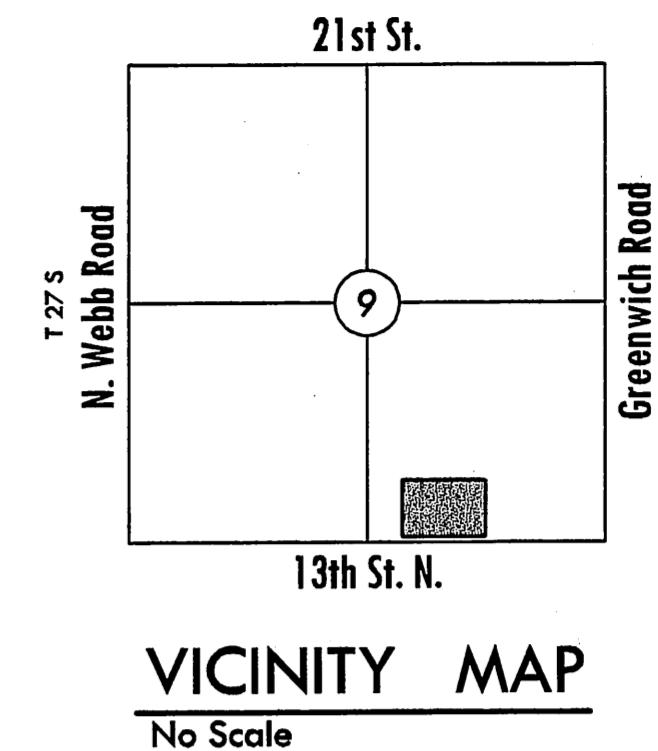
PAVING AND INCIDENTAL DRAINAGE PLANS
GREENWICH OFFICE PARK ADDITION
PHASE 1 - PART A

BERKELEY SQUARE PARKWAY: FROM THE WEST LINE OF LOT 1, BLK. 1, TO THE EAST LINE OF LOT 3, BLK. 1

PROJECT NO. 472-84644

THE CITY OF WICHITA, KANSAS
JAMES L. ARMOUR, P.E. - CITY ENGINEER

OCA NO. 766189



INDEX TO DRAWINGS

SHEET NO.	DESCRIPTION
1	TITLE SHEET
2-7	DETAILS
8	PAVING PLAN
9	CURVE TABLES
10-11	SWS DETAILS
12	SWS LINE 1
13	SWS LINES 2 & 3
14	BUBBLE MAP
15-19	BMP DETAILS
20-21	CROSS SECTIONS
22	PLATS

BENCHMARKS

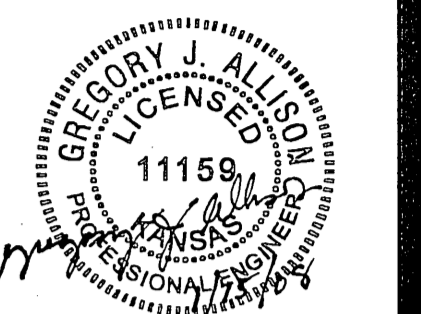
- BM#1 "□" WW @ West end S. Headwall S. side 13th St. 310' W. & 41' S of S 1/4 Cor. 9-27S-2E Elev.=1377.32
- BM#2 "□" Front center inlet on N. side 13th St. 300' E. of S 1/4 Cor. 9-27S-2E Elev.=1382.78

PROJECT LENGTH	
Berkeley Sq. Pkwy.	467 L.F.
EARTHWORK SUMMARY	
EXCAVATION	200 C.Y.
COMP. FILL (95%)	1,000 C.Y.
CONTRACTOR FURN.	950 C.Y.

CONTRACTOR FURNISHED MATERIAL TO BE BORROWED FROM DRAINAGE PHASE 1 C.O.W. PROJ. #468-84409

MKEC
ENGINEERING
CONSULTANTS, INC.

411 N. WEBB ROAD
WICHITA, KS. 67206
316-684-9600



PAVING & INCIDENTAL DRAINAGE
GREENWICH OFFICE PARK ADD.
PHASE 1 - PART A

TITLE SHEET

SHEET TITLE
472-84644
PROJECT NUMBER

DFL / DMU / GJA
DESIGNED DRAWN CHECKED

ISSUED
January 2008

REVISED

SHEET NO.