

BENCHMARK:
 BM #1: HOOVER AND 45TH ST. NORTH
 - COW BENCHMARK AT NE CORNER OF
 INTERSECTION, 10.20' SSE OF PP,
 58.80' ESE OF PP ON NW CORNER,
 85.50' NE OF GAS LINE MARKER,
 59.00' NORTH OF GAS LINE MARKER,
 28.50' EAST OF CENTERLINE, 14.50'
 NORTH OF CENTERLINE.
 ELEV. = 1335.29 (NGVD 29)

BM #2: Small RR spike in 3rd PP west
 of Hoover St. on the north side of
 45th St. N.
 Elev. = 1337.68

BM #3: Small RR spike in 2nd PP east
 of NW Corner of SEC. 27, TWP. 26-S,
 R-1-W. (North side of 45th St. N.,
 west of Hoover St.)
 Elev. = 1339.57

BM #4: 60d nail in PP at the SE
 corner of exception on west side of
 Hoover St., south of 45th St. N.
 Elev. = 1335.26

CAUTION!
 Ex. 14" Southern Star gas
 line crossing. Contact
 Belinda Bell at 529-6601 at
 least 48 hours prior to
 construction.

CAUTION!
 Ex. 16" Wichita Gas
 Producers gas line crossing.
 Contact Jason Smith at
 773-1575 at least 48
 hours prior to construction.

Sta 0+60.00, Begin
 construction of 5" A.C.
 pvm. w/5" reinf. rock
 base and 4' sidewalk.

Install 100 L.F. 18" RCP W/
 end sections. Install 15.0
 S.Y. light stone rip-rap as
 indicated (each side).

Construct 5" A.C. mat
 pavement w/ 5" reinf.
 rock base.

Curve #1
 Curve Data Based on Centerline
 Rad. = 314.88' Delta = 36°01'51" Tangent = 102.40'
 Arc = 198.01' L.C. = 194.77' Def/Ft. = 5.45894 Min.

Station	Arc	FACE CHORD LENGTHS		Defl.	T. Defl.
		8' Lt.	8' Rt.		
0+60.00	-	-	-	0'00"00"	0'00"00"
0+75.00	15.00'	16.90'	13.24'	1'21"53"	1'21"53"
1+00.00	25.00'	28.17'	22.06'	2'16"28"	3'38"21"
1+25.00	25.00'	28.17'	22.06'	2'16"28"	5'54"50"
1+50.00	25.00'	28.17'	22.06'	2'16"28"	8'11"18"
1+75.00	25.00'	28.17'	22.06'	2'16"28"	10'27"46"
2+00.00	25.00'	28.17'	22.06'	2'16"28"	12'44"15"
2+25.00	25.00'	28.17'	22.06'	2'16"28"	15'00"43"
2+50.00	25.00'	28.17'	22.06'	2'16"28"	17'17"12"
2+58.01	8.01'	9.03'	7.07'	0'43"43"	18'00"55"

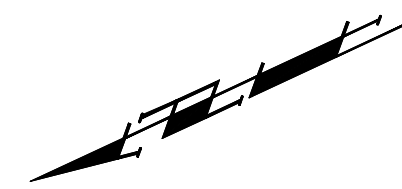
Regrade ditch to ensure
 positive drainage in 150',
 both sides. Cost of
 regrading to be incidental
 to "Site Clearing &
 Restoration"

P.V.I.
 Elev. = 1335.50
 179.62' V.C.

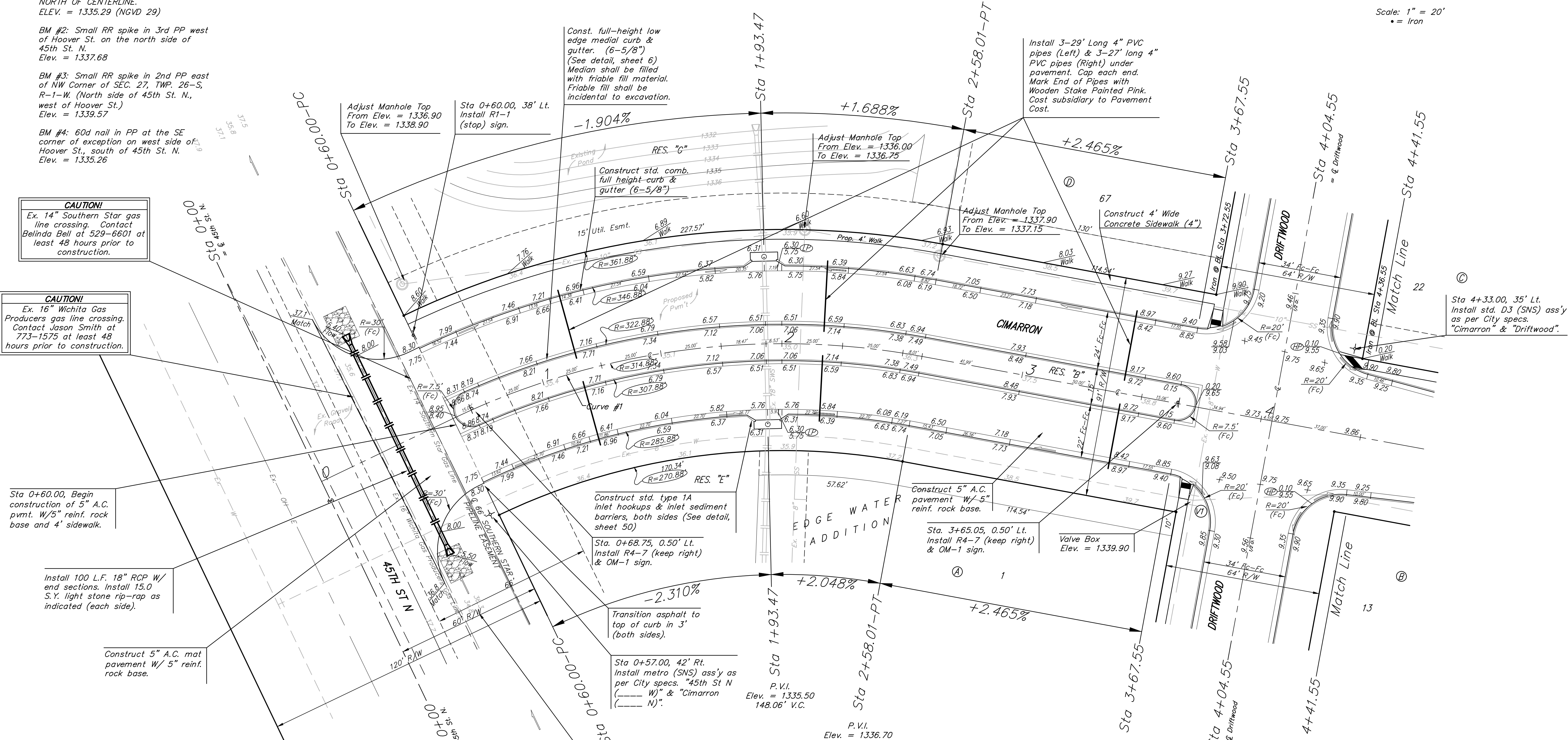
P.V.I.
 Elev. = 1336.70
 No V.C.

P.V.I.
 Elev. = 1335.50
 148.06' V.C.

P.V.I.
 Elev. = 1336.70
 No V.C.



Scale: 1" = 20'
 • = Iron



EDGE WATER ADDITION - PH. I
CIMARRON
 STA 0+00 TO STA 4+55

Baughman
 ENGINEERING | SURVEYING | PLANNING | LANDSCAPE ARCHITECTURE

Baughman Company, P.A. 315 Ellis St. Wichita, KS 67211 P 316-262-7271 F 316-262-0149

PROJECT NUMBER
 412-84582

DESIGN
 ATD

DRAWN
 TMS

APPROVED
 DATE
 01/08

REVISIONS:

SCALE
 Noted

SHEET
7 OF 72

EdgeWater\Phase1\Sheet 07-05-E838