

BENCHMARK:
 BM #1: HOOVER AND 45TH ST. NORTH
 - COW BENCHMARK AT NE CORNER OF
 INTERSECTION, 10.20' SSE OF PP,
 58.80' ESE OF PP ON NW CORNER,
 85.50' NE OF GAS LINE MARKER,
 59.00' NORTH OF GAS LINE MARKER,
 28.50' EAST OF CENTERLINE, 14.50'
 NORTH OF CENTERLINE.
 ELEV. = 1335.29 (NGVD 29)

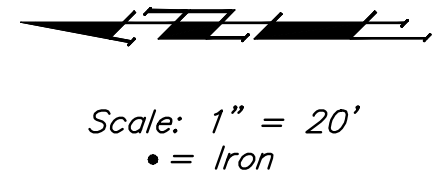
BM #2: Small RR spike in 3rd PP west
 of Hoover St. on the north side of
 45th St. N.
 Elev. = 1337.68

BM #3: Small RR spike in 2nd PP east
 of NW Corner of SEC. 27, TWP. 26-S,
 R-1-W. (North side of 45th St. N.,
 west of Hoover St.)
 Elev. = 1339.57

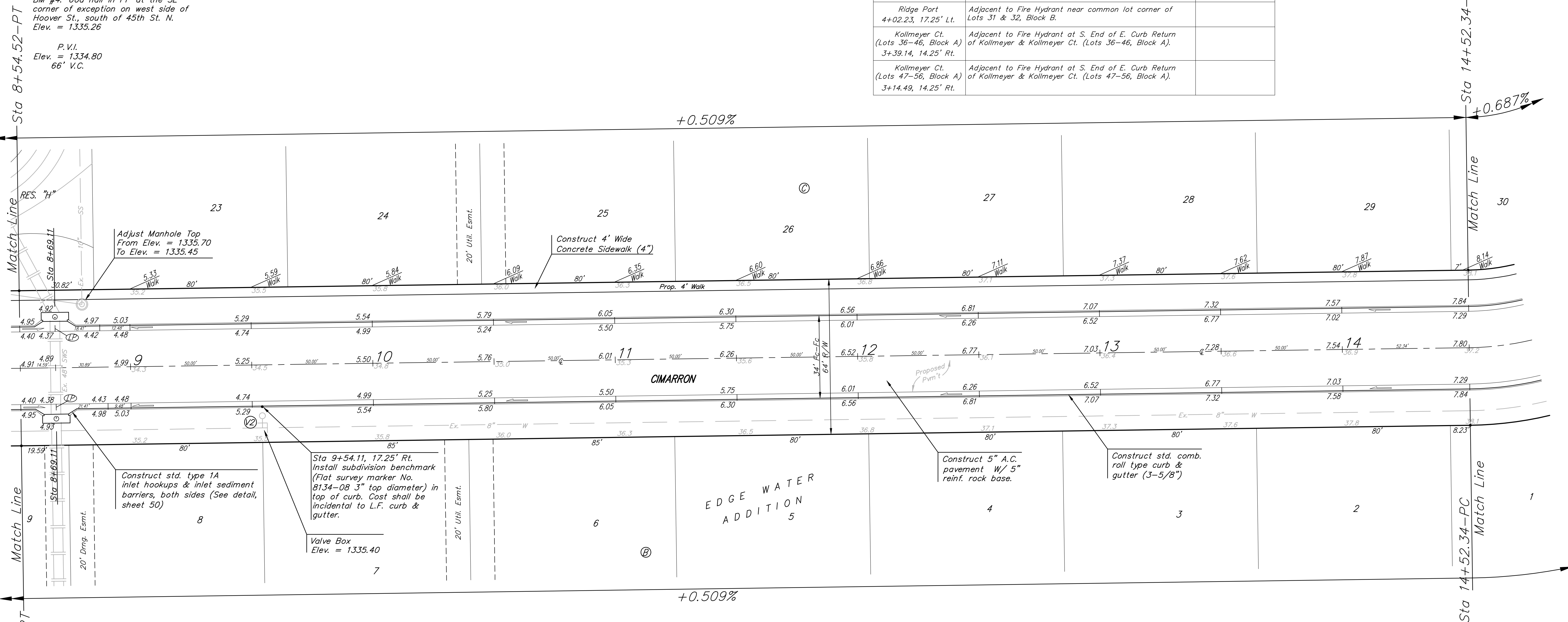
BM #4: 60d nail in PP at the SE
 corner of exception on west side of
 Hoover St., south of 45th St. N.
 Elev. = 1335.26

P.V.I.
 Elev. = 1334.80
 66' V.C.

Street & Station	Location Description	Elevation
Cimarron 9+54.11, 17.25' Rt.	Adjacent to Fire Hydrant near common lot corner of Lots 7 & 8, Block B.	
Kollmeyer 15+55.85, 17.25' Rt.	Adjacent to Fire Hydrant at S.E. End of S. Curb Return of Kollmeyer & Cimarron.	
Kollmeyer 19+50.15, 17.25' Rt.	Adjacent to Fire Hydrant at NE. End of east Curb Return of Kollmeyer & Kollmeyer Ct. (Lots 62-84, Block A).	
Kollmeyer Ct. (Lots 62-84, Block A) 3+29.00, 14.25' Rt.	Adjacent to Fire Hydrant near common lot corner of Lots 75 & 76, Block A.	
Driftwood 2+98.61, 17.25' Lt.	Adjacent to Fire Hydrant at SE End of SE Curb Return of Driftwood & Cimarron.	
Driftwood 10+87.71, 17.25' Lt.	Adjacent to Fire Hydrant at W End of W Curb Return of Driftwood & Driftwood Ct.	
Ridge Port 4+02.23, 17.25' Lt.	Adjacent to Fire Hydrant near common lot corner of Lots 31 & 32, Block B.	
Kollmeyer Ct. (Lots 36-46, Block A) 3+39.14, 14.25' Rt.	Adjacent to Fire Hydrant at S. End of E. Curb Return of Kollmeyer & Kollmeyer Ct. (Lots 36-46, Block A).	
Kollmeyer Ct. (Lots 47-56, Block A) 3+14.49, 14.25' Rt.	Adjacent to Fire Hydrant at S. End of E. Curb Return of Kollmeyer & Kollmeyer Ct. (Lots 47-56, Block A).	



P.V.I.
 Elev. = 1337.84
 No V.C.



P.V.I.
 Elev. = 1334.80
 72' V.C.

Sta 14+52.34-PC
 Match Line

NOTE: ROLL TYPE CURB & GUTTER TO BE CONSTRUCTED ON THE PAVEMENT SHOWN ON THIS SHEET. TOP OF CURB ELEVATIONS ARE GIVEN FOR FULL HEIGHT CURB.

	EDGE WATER ADDITION - PH. I	
	CIMARRON STA 8+54.52 TO STA 14+52.34	
<small>Baughman Company, P.A. 315 Ellis St. Wichita, KS 67211 P 316-262-7271 F 316-262-0149 ENGINEERING SURVEYING PLANNING LANDSCAPE ARCHITECTURE</small>		
PROJECT NUMBER 412-84582	DESIGN ATD	DRAWN TMS
REVISIONS:	APPROVED	DATE 01/08
SCALE Noted		SHEET 9 OF 72
<small>EdgeWater\Phase1\Str3</small>		<small>07-05-E838</small>