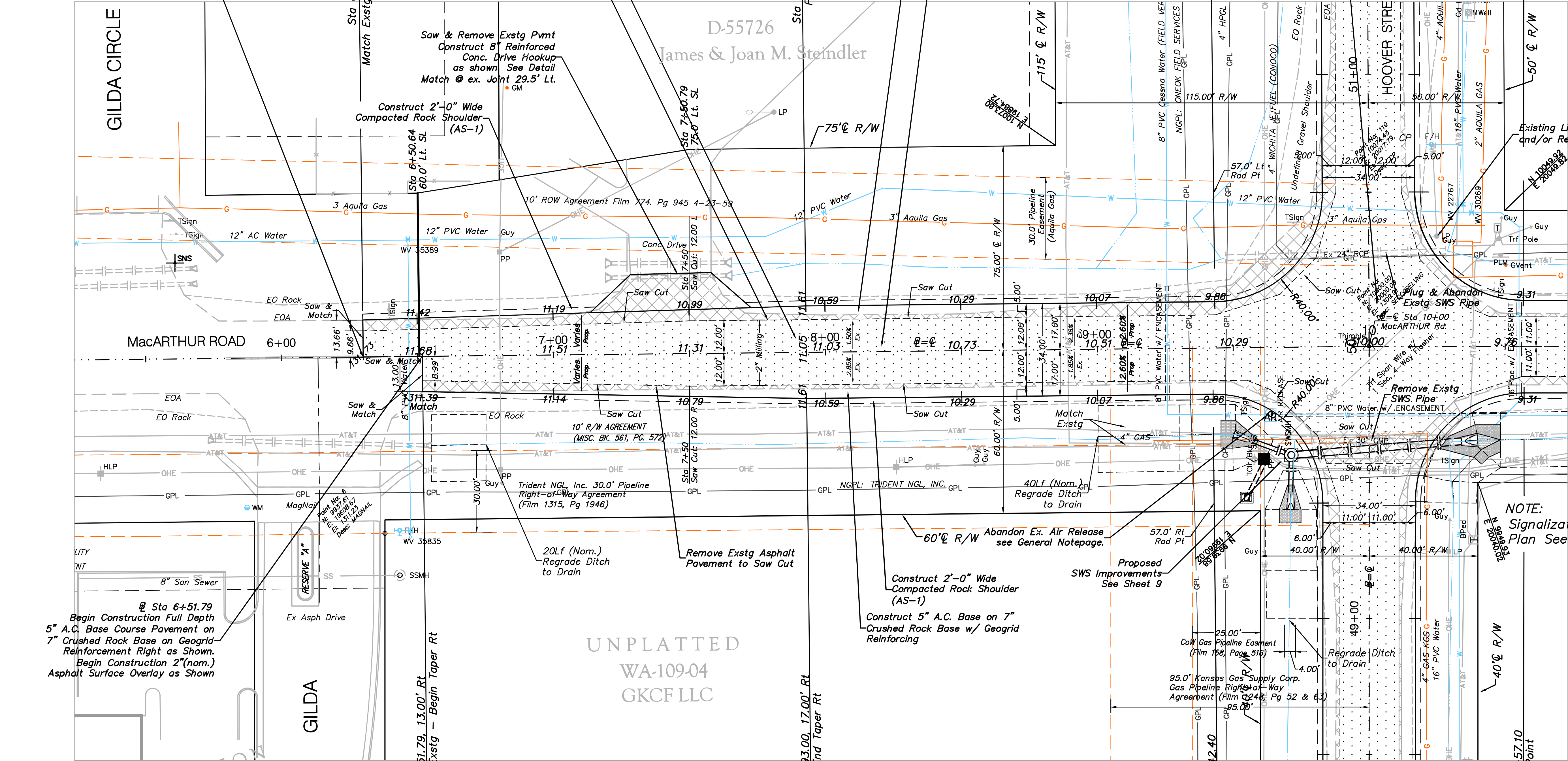


At Sta 6+30.00  
Begin Construction Full Depth  
5" A.C. Base Course Pavement  
on 7" Crushed Rock Base on  
Geogrid Reinforcement Left as Shown.  
Begin Construction 2"(nom.)  
Asphalt Surface Overlay Left as Shown

2" (Nom.) Surface Milling  
Saw Cut to Saw Cut  
Remove Exstg Asphalt  
Pavement to Saw Cut

Construct 5" A.C. Base on 7"  
Crushed Rock Base w/ Geogrid  
Reinforcing  
Construct 2" (min.)  
A.C. Surface  
Full Width

2" (Nom.) Surface Milling  
of Exstg Intersection  
Construct 2" (min.) A.C.  
Surface Full Width



Existing Light Pole to be Removed  
and/or Relocated by "Others"

NOTE:  
Signalization and Marking  
Plan See Sheet 27-28

At Sta 6+51.79  
Begin Construction Full Depth  
5" A.C. Base Course Pavement on  
7" Crushed Rock Base on Geogrid  
Reinforcement Right as Shown.  
Begin Construction 2"(nom.)  
Asphalt Surface Overlay as Shown

Construct 2'-0" Wide  
Compacted Rock Shoulder  
(AS-1)  
Construct 5" A.C. Base on 7"  
Crushed Rock Base w/ Geogrid  
Reinforcing

Proposed  
SWS Improvements  
See Sheet 9

AL ADDITION