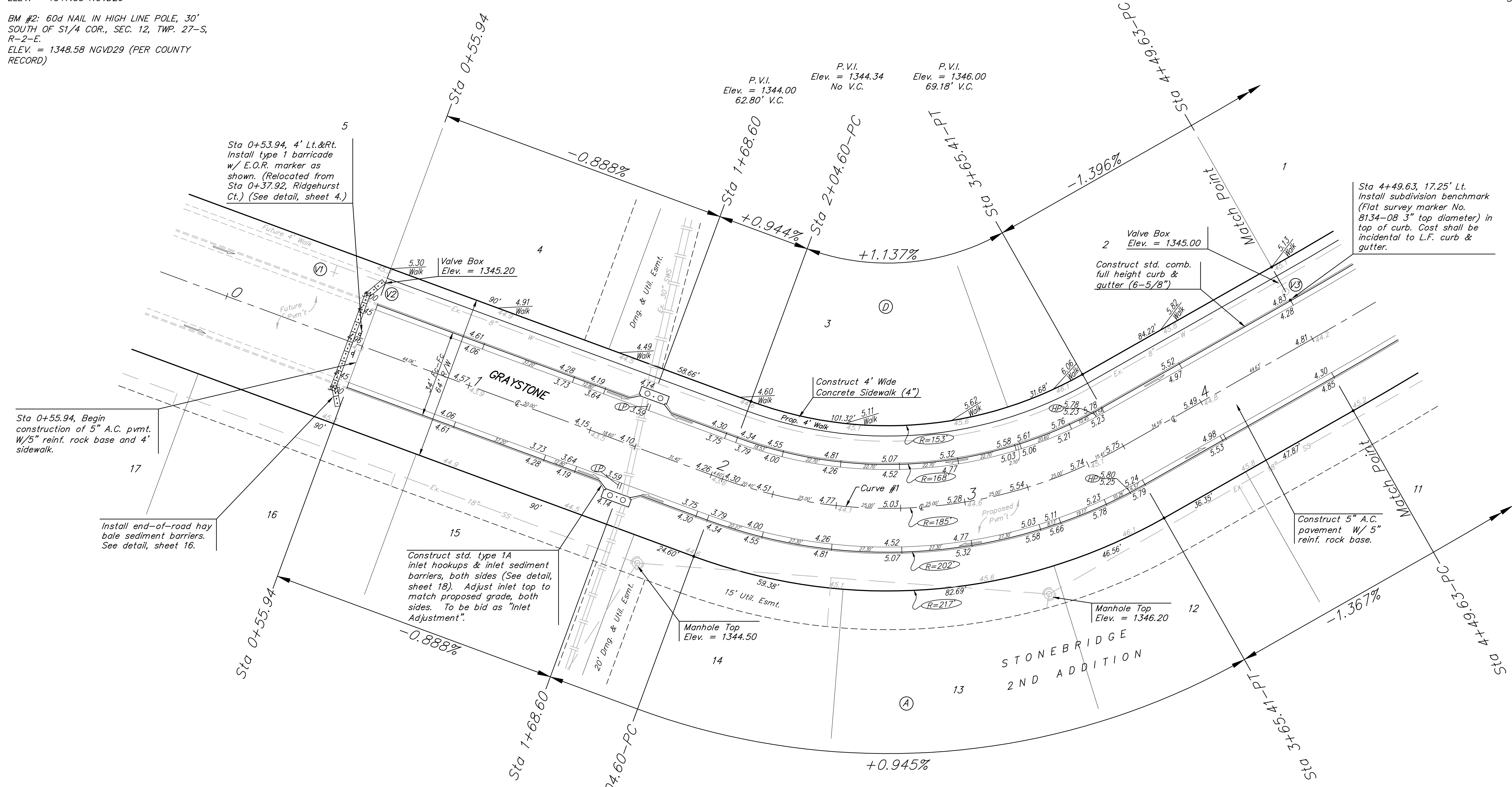


BENCHMARK:
 BM #1: 4" CUT, TOP OF CURB, S. SIDE OF SUNDANCE AS DEDICATED IN SAVANNA AT CASTLE ROCK RANCH 7TH ADDITION, 25'± W. OF THE WEST LINE OF THE SE1/4 OF SEC. 12, TWP. 27-S, R-2-E. ELEV. = 1347.33 NGVD29

BM #2: 60d NAIL IN HIGH LINE POLE, 30' SOUTH OF S1/4 COR., SEC. 12, TWP. 27-S, R-2-E. ELEV. = 1348.58 NGVD29 (PER COUNTY RECORD)

Scale: 1" = 20'
 • = Iron



Curve #1
 Curve Data Based on Centerline
 Rad. = 185' Delta = 49° 48' 18" Tangent = 85.88'
 Arc = 160.81' L.C. = 155.80' Def/Fl. = 9.29140 Min.

Station	Arc	FACE CHORD LENGTHS		Defl.	T. Defl.
		8' Lt.	8' Rt.		
2+04.60	-	-	-	0'00"00"	0'00"00"
2+25.00	20.40'	17.63'	23.15'	3'09'32"	3'09'32"
2+50.00	25.00'	21.61'	28.36'	3'52'17"	7'01'50"
2+75.00	25.00'	21.61'	28.36'	3'52'17"	10'54'07"
3+00.00	25.00'	21.61'	28.36'	3'52'17"	14'46'24"
3+25.00	25.00'	21.61'	28.36'	3'52'17"	18'38'41"
3+50.00	25.00'	21.61'	28.36'	3'52'17"	22'30'58"
3+65.41	15.41'	13.32'	17.49'	2'23'11"	24'54'09"

STONEBRIDGE 2ND ADD. - PH. I
GRAYSTONE
 STA 0+55.94 TO STA 4+49.63

Baughman Company, P.A. 315 Ellis St. Wichita, KS 67211 F3162627271 F3162620149
 ENGINEERING | SURVEYING | PLANNING | LANDSCAPE ARCHITECTURE

PROJECT NUMBER 472-84591	DESIGN ATD	DRAWN TMS
REVISIONS:	APPROVED	DATE 01/08
SCALE Noted		8 OF 27
SHEET		

Stonebridge|Str I 0607-E601