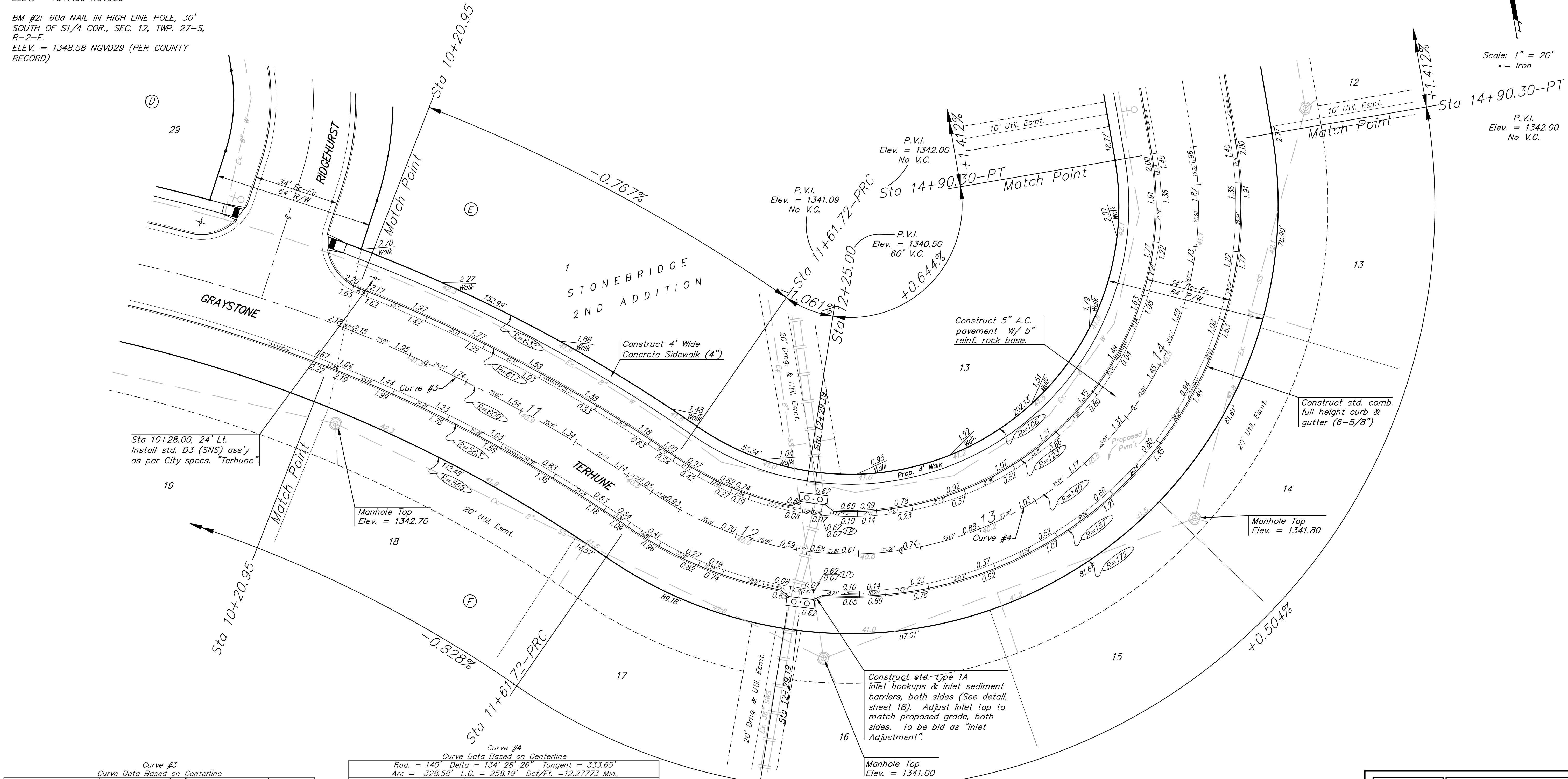


BENCHMARK:
 BM #1: 6" CUT, TOP OF CURB, S. SIDE OF SUNDANCE AS DEDICATED IN SAVANNA AT CASTLE ROCK RANCH 7TH ADDITION, 25'± W. OF THE WEST LINE OF THE SE1/4 OF SEC. 12, TWP. 27-S, R-2-E. ELEV. = 1347.33 NGVD29

BM #2: 60d NAIL IN HIGH LINE POLE, 30' SOUTH OF S1/4 COR., SEC. 12, TWP. 27-S, R-2-E. ELEV. = 1348.58 NGVD29 (PER COUNTY RECORD)

Scale: 1" = 20'
 • = Iron

P.V.I.
 Elev. = 1342.00
 No V.C.



Sta 10+28.00, 24' Lt. Install std. D3 (SNS) ass'y as per City specs. "Terhune"

Manhole Top Elev. = 1342.70

Manhole Top Elev. = 1341.80

Construct std. Type 1A Inlet hookups & inlet sediment barriers, both sides (See detail, sheet 18). Adjust inlet top to match proposed grade, both sides. To be bid as "Inlet Adjustment".

Manhole Top Elev. = 1341.00

Curve #3
 Curve Data Based on Centerline
 Rad. = 600' Delta = 25° 33' 17" Tangent = 136.07'
 Arc = 267.61' L.C. = 265.40' Def/Ft. = 2.86477 Min.

Station	Arc	8' Lt.	8' Rt.	Defl.	T. Defl.
8+94.11	-	-	-	0'00'00"	0'00'00"
9+00.00	5.89'	6.14'	5.64'	0'16'52"	0'16'52"
9+25.00	25.00'	26.04'	23.96'	1'11'37"	1'28'29"
9+51.21	26.21'	27.30'	25.12'	1'15'05"	2'43'35"
9+86.08	34.87'	36.32'	33.41'	1'39'53"	4'23'28"
10+20.95	34.87'	36.32'	33.41'	1'39'53"	6'03'22"
10+25.00	4.05'	4.22'	3.88'	0'11'36"	6'14'58"
10+50.00	25.00'	26.04'	23.96'	1'11'37"	7'26'35"
10+75.00	25.00'	26.04'	23.96'	1'11'37"	8'38'12"
11+00.00	25.00'	26.04'	23.96'	1'11'37"	9'49'49"
11+25.00	25.00'	26.04'	23.96'	1'11'37"	11'01'27"
11+50.00	25.00'	26.04'	23.96'	1'11'37"	12'13'04"
11+61.72	11.72'	12.21'	11.23'	0'33'34"	12'46'38"

Curve #4
 Curve Data Based on Centerline
 Rad. = 140' Delta = 134° 28' 26" Tangent = 333.65'
 Arc = 328.58' L.C. = 258.19' Def/Ft. = 12.27773 Min.

Station	Arc	8' Lt.	8' Rt.	Defl.	T. Defl.
11+61.72	-	-	-	0'00'00"	0'00'00"
11+75.00	13.28'	10.90'	15.65'	2'43'03"	2'43'03"
12+00.00	25.00'	20.51'	29.43'	5'06'56"	7'49'59"
12+25.00	25.00'	20.51'	29.43'	5'06'56"	12'56'56"
12+50.00	25.00'	20.51'	29.43'	5'06'56"	18'03'53"
12+75.00	25.00'	20.51'	29.43'	5'06'56"	23'10'49"
13+00.00	25.00'	20.51'	29.43'	5'06'56"	28'17'46"
13+25.00	25.00'	20.51'	29.43'	5'06'56"	33'24'42"
13+50.00	25.00'	20.51'	29.43'	5'06'56"	38'31'39"
13+75.00	25.00'	20.51'	29.43'	5'06'56"	43'38'35"
14+00.00	25.00'	20.51'	29.43'	5'06'56"	48'45'32"
14+25.00	25.00'	20.51'	29.43'	5'06'56"	53'52'29"
14+50.00	25.00'	20.51'	29.43'	5'06'56"	58'59'25"
14+75.00	25.00'	20.51'	29.43'	5'06'56"	64'06'22"
14+90.30	15.30'	12.56'	18.02'	3'07'51"	67'14'13"

Baughman STONEBRIDGE 2ND ADD. - PH. I
TERHUNE
 STA 10+20.95 TO STA 14+90.30

Baughman Company, P.A. 315 Ellis St. Wichita, KS 67211 P316262-7271 F3162620149
 ENGINEERING | SURVEYING | PLANNING | LANDSCAPE ARCHITECTURE

PROJECT NUMBER: 412-84591
 REVISIONS:
 DESIGN: ATD
 APPROVED: [Signature]
 SCALE: Noted
 SHEET: 10 OF 27

DATE: 01/08
 DRAWN: TMS
 DATE: 01/08

Stonebridge/Str3 0607-E601