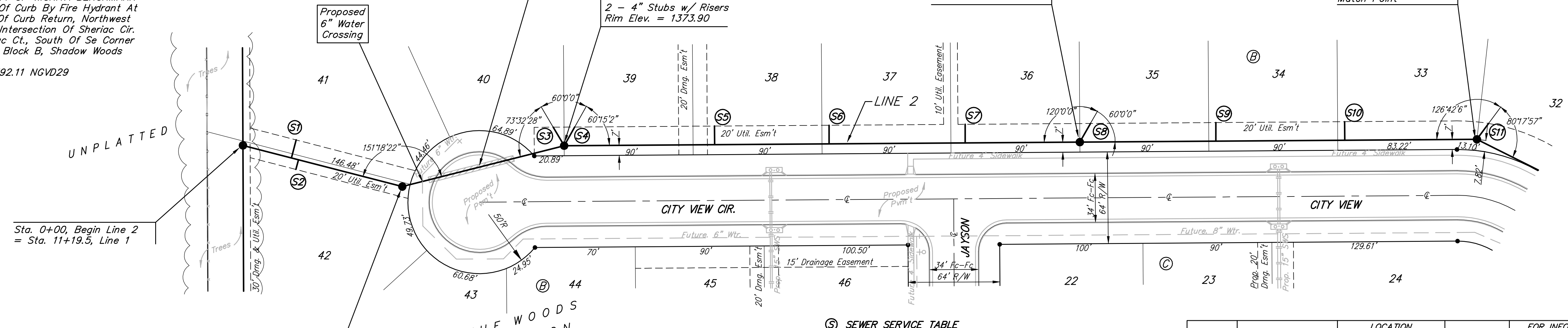
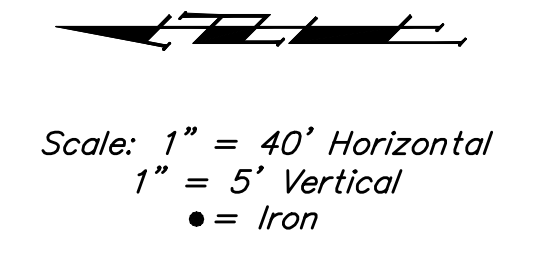


BENCHMARK:

BM #1: CITY OF WICHITA BENCHMARK DISC, TOP OF CURB AT WEST END OF CURB RETURN, NORTHWEST CORNER OF INTERSECTION OF CITY VIEW AND SHERIAC CIR. IN SHADOW WOODS ADDITION.
ELEV. = 1386.66 NGVD29

BM #2: CITY OF WICHITA BENCHMARK Disc, Top Of Curb By Fire Hydrant At West End Of Curb Return, Northwest Corner Of Intersection Of Sheriac Cir. And Sheriac Ct., South Of Se Corner Of Lot 13, Block B, Shadow Woods Addition.
Elev. = 1392.11 NGVD29

From Station 2+31.4 to Station 8+68.6, Line 2, the trenches shall be Backfilled with Sand, Jetted, and Vibrated. (637.2 L.F. Sand Backfill)

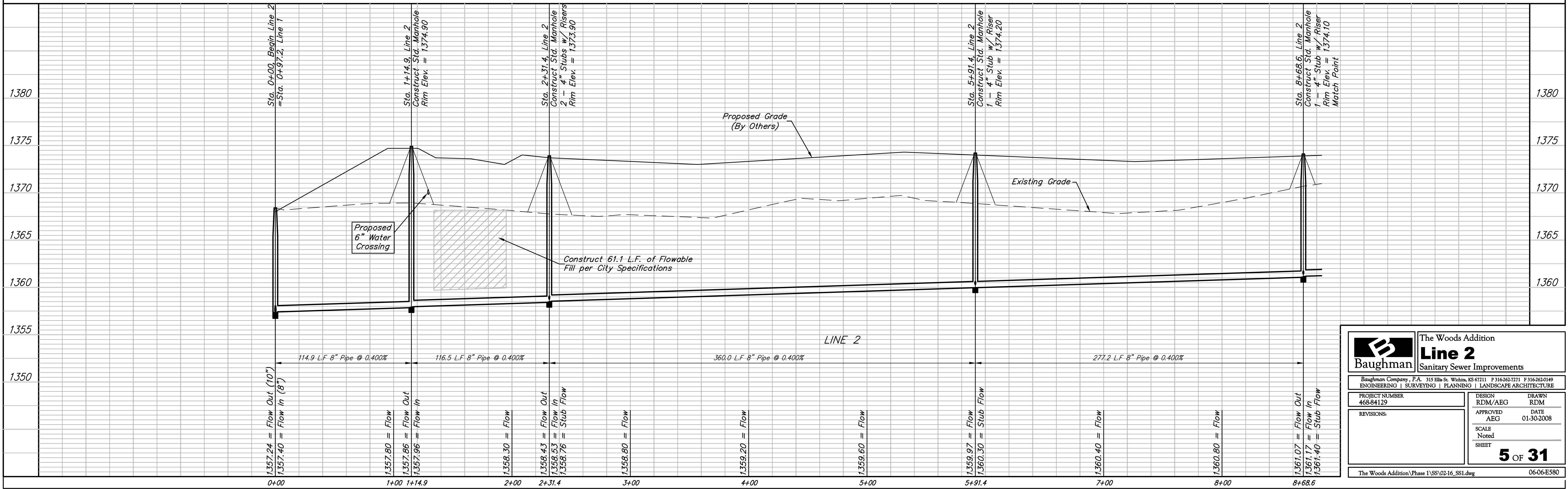


SEWER SERVICE TABLE

NUMBER	TYPE	LOCATION			FOR INFORMATION ONLY	
		LOT NO.	BLOCK NO.	LINE NO.	STATION/DIRECTION	APPROXIMATE LENGTH 4" PIPE VERTICAL HORIZONTAL
S1	8" x 4" Tee	41	B	2	0+35/Lt.	9' 13'
S2	8" x 4" Tee	42	B	2	0+40/Rt.	9' 7'
S3	4" Stub	40	B	2	2+31.4/Lt.	11' 15'
S4	4" Stub	39	B	2	2+31.4/Lt.	11' 15'
S5	8" x 4" Tee	38	B	2	3+36.4/Lt.	10' 13'

NUMBER	TYPE	LOCATION			FOR INFORMATION ONLY	
		LOT NO.	BLOCK NO.	LINE NO.	STATION/DIRECTION	APPROXIMATE LENGTH 4" PIPE VERTICAL HORIZONTAL
S6	8" x 4" Tee	37	B	2	4+16.4/Lt.	10' 13'
S7	8" x 4" Tee	36	B	2	5+11.4/Lt.	11' 13'
S8	4" Stub	35	B	2	5+91.4/Lt.	10' 15'
S9	8" x 4" Tee	34	B	2	6+86.4/Lt.	9' 13'
S10	8" x 4" Tee	33	B	2	7+76.4/Lt.	9' 13'
S11	4" Stub	32	B	2	8+68.6/Lt.	9' 15'

Trees and shrubs in public right-of-way which are in direct conflict with proposed new construction shall be removed by the Contractor ONLY with the Developer or Baughman Company approval. Trees and shrubs which are not in direct conflict with proposed new construction shall be saved and protected from damage.



Baughman The Woods Addition
Line 2
Sanitary Sewer Improvements

Baughman Company, P.A. 315 Ellis St. Wichita, KS 67211 P 316-262-7271 F 316-262-0149
ENGINEERING | SURVEYING | PLANNING | LANDSCAPE ARCHITECTURE

PROJECT NUMBER 468-84129	DESIGN RDM/AEG	DRAWN RDM
APPROVED AEG	DATE 01-30-2008	
REVISIONS:	SCALE Noted	SHEET 5 OF 31

The Woods Addition\Phase 1\SSV02-16-SS1.dwg 06-06-E580