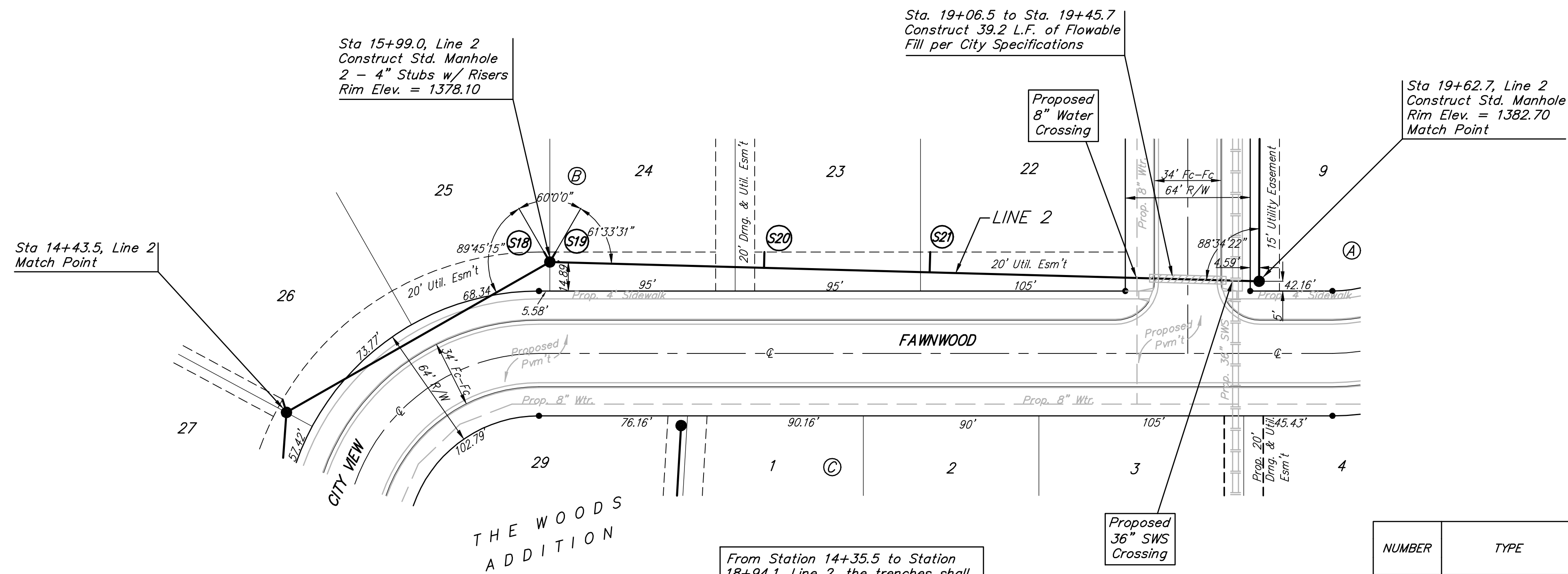
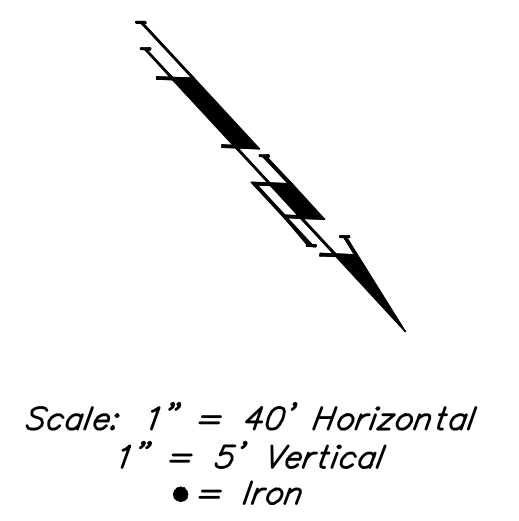


BENCHMARK:

BM #1: CITY OF WICHITA BENCHMARK
DISC, TOP OF CURB AT WEST END OF
CURB RETURN, NORTHWEST CORNER OF
INTERSECTION OF CITY VIEW AND
SHERIAC CIR. IN SHADOW WOODS
ADDITION.
ELEV. = 1386.66 NGVD29

BM #2: CITY OF WICHITA BENCHMARK
Disc, Top Of Curb By Fire Hydrant At
West End Of Curb Return, Northwest
Corner Of Intersection Of Sheriac Cir.
And Sheriac Ct., South Of Se Corner
Of Lot 13, Block B, Shadow Woods
Addition.
Elev. = 1392.11 NGVD29

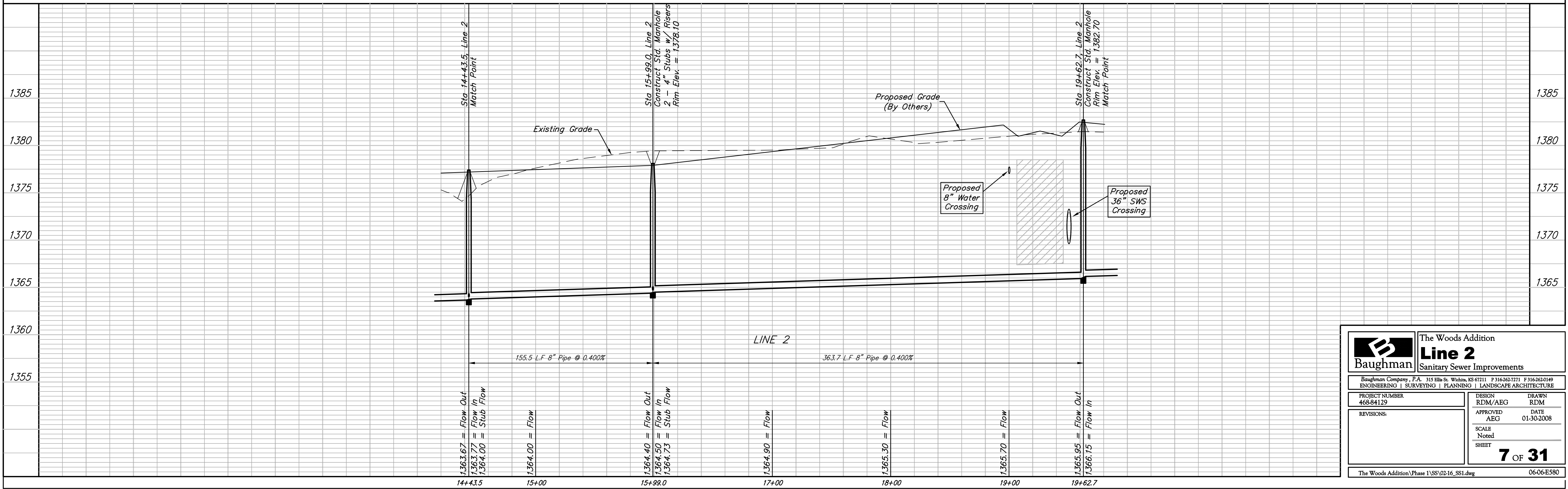


Trees and shrubs in public right-of-way which are in direct conflict with proposed new construction shall be removed by the Contractor ONLY with the Developer or Baughman Company approval. Trees and shrubs which are not in direct conflict with proposed new construction shall be saved and protected from damage.

From Station 14+35.5 to Station 18+94.1, Line 2, the trenches shall be Backfilled with Sand, Jetted, and Vibrated, except for locations where flowable fill is installed. (458.6 L.F. Sand Backfill)

SEWER SERVICE TABLE

NUMBER	TYPE	LOCATION			STATION/ DIRECTION	FOR INFORMATION ONLY	
		LOT NO.	BLOCK NO.	LINE NO.		APPROXIMATE LENGTH 4" PIPE	
S18	4" Stub	25	B	2	15+99.0/Lt.	9'	6'
S19	4" Stub	24	B	2	15+99.0/Lt.	9'	6'
S20	8" x 4" Tee	23	B	2	17+08.8/Lt.	10'	8'
S21	8" x 4" Tee	22	B	2	17+93.8/Lt.	11'	10'



Baughman

Baughman Company, P.A. 315 Ellis St. Wichita, KS 67211 P 316-262-7271 F 316-262-0149
ENGINEERING | SURVEYING | PLANNING | LANDSCAPE ARCHITECTURE

The Woods Addition
Line 2
Sanitary Sewer Improvements

PROJECT NUMBER: 468-84129
DESIGN: RDM/AEG
DRAWN: RDM
APPROVED: AEG
DATE: 01-30-2008
SCALE: Noted
SHEET: 7 OF 31

The Woods Addition\Phase 1\SSV02-16_SS1.dwg 06-06-E580