

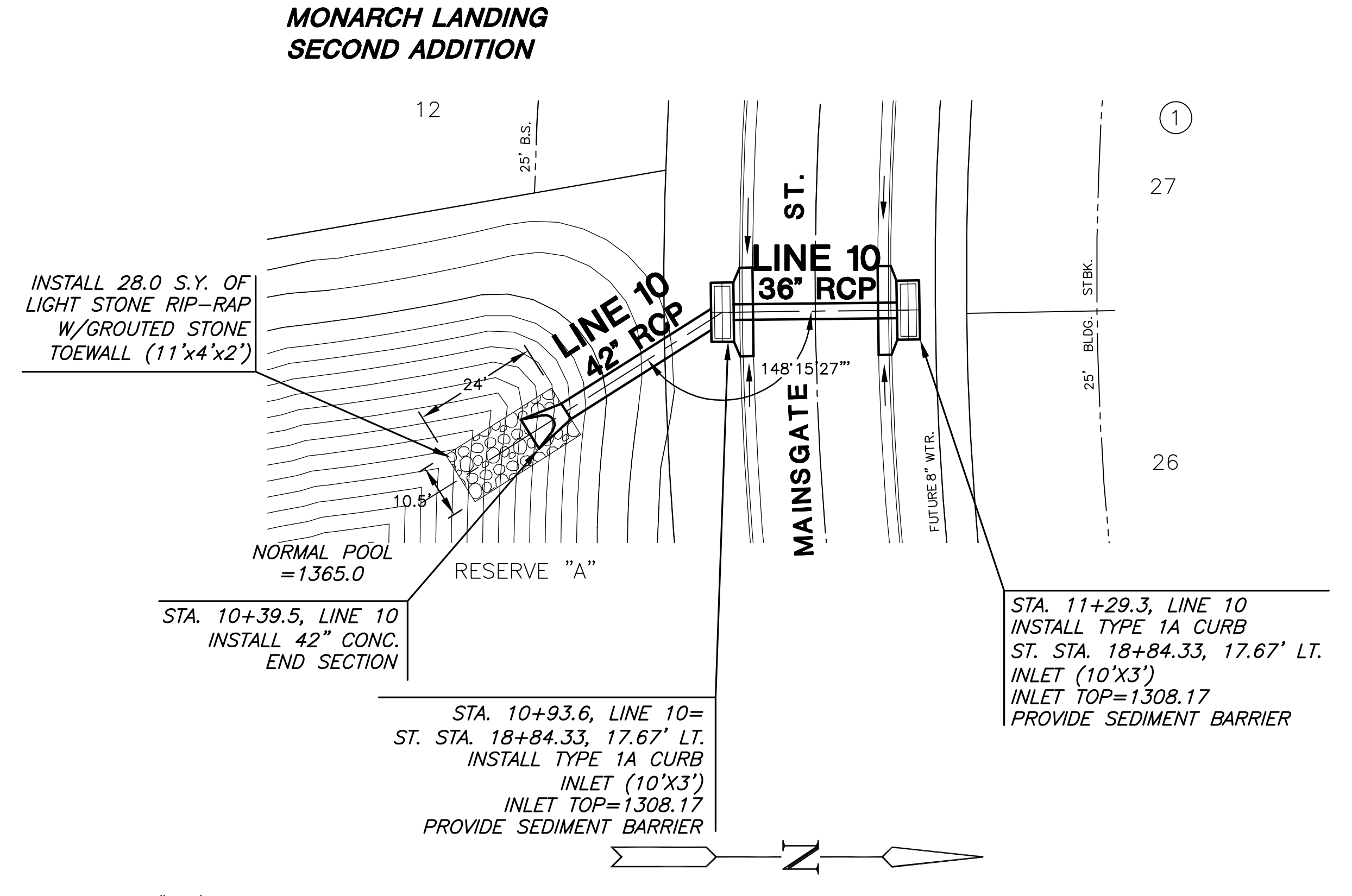
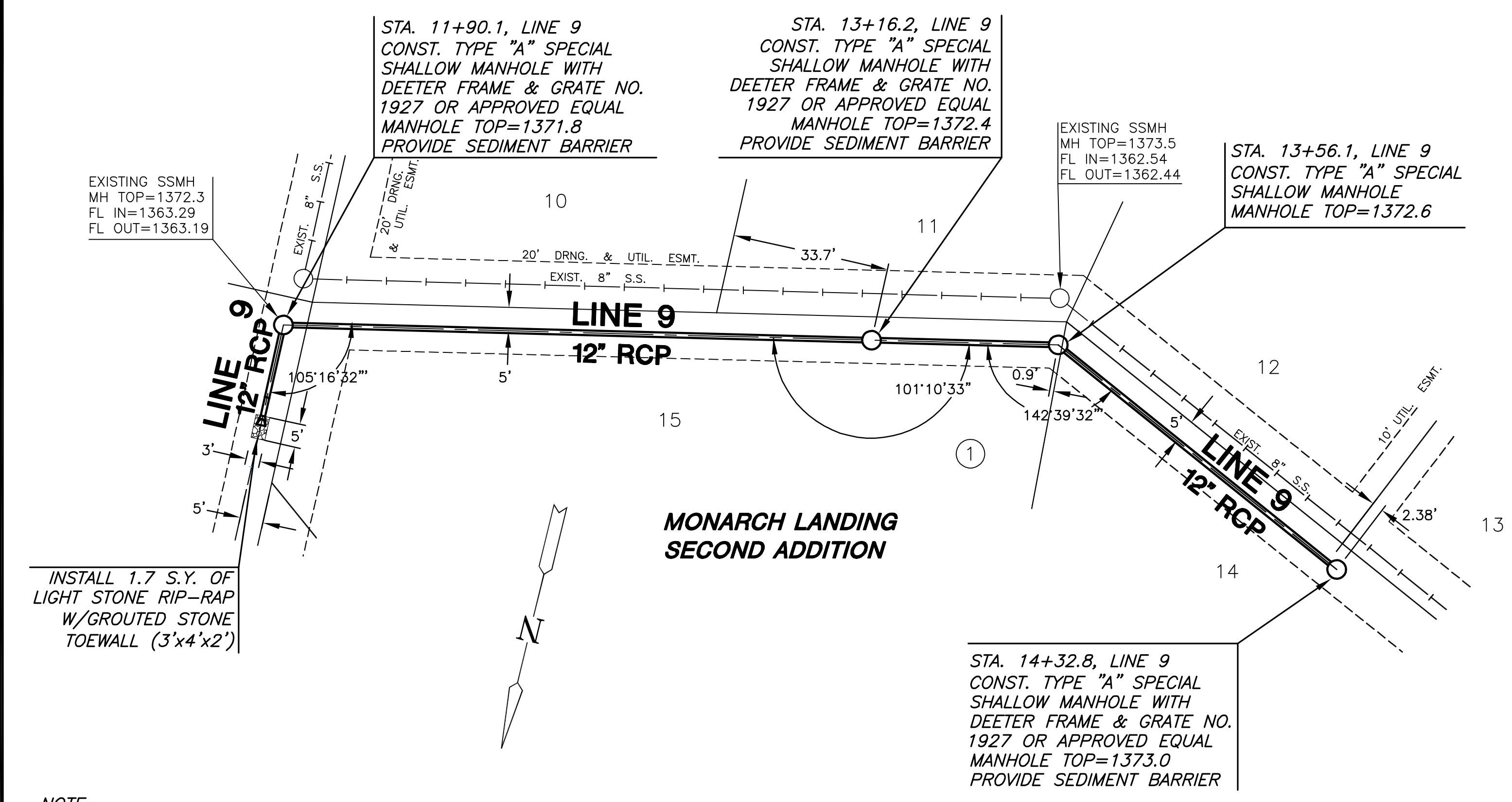
STORM WATER DRAIN PLANS
MONARCH LANDING SECOND ADDITION
PHASE 1

LINES 9 & 10
SHEET TITLE
468-84434
PROJECT NUMBER

DESIGN BY: **DFL**
DRAWN BY: **KKL**
CHECKED BY: **GJA**

ISSUED: **February 2008**
REVISED:

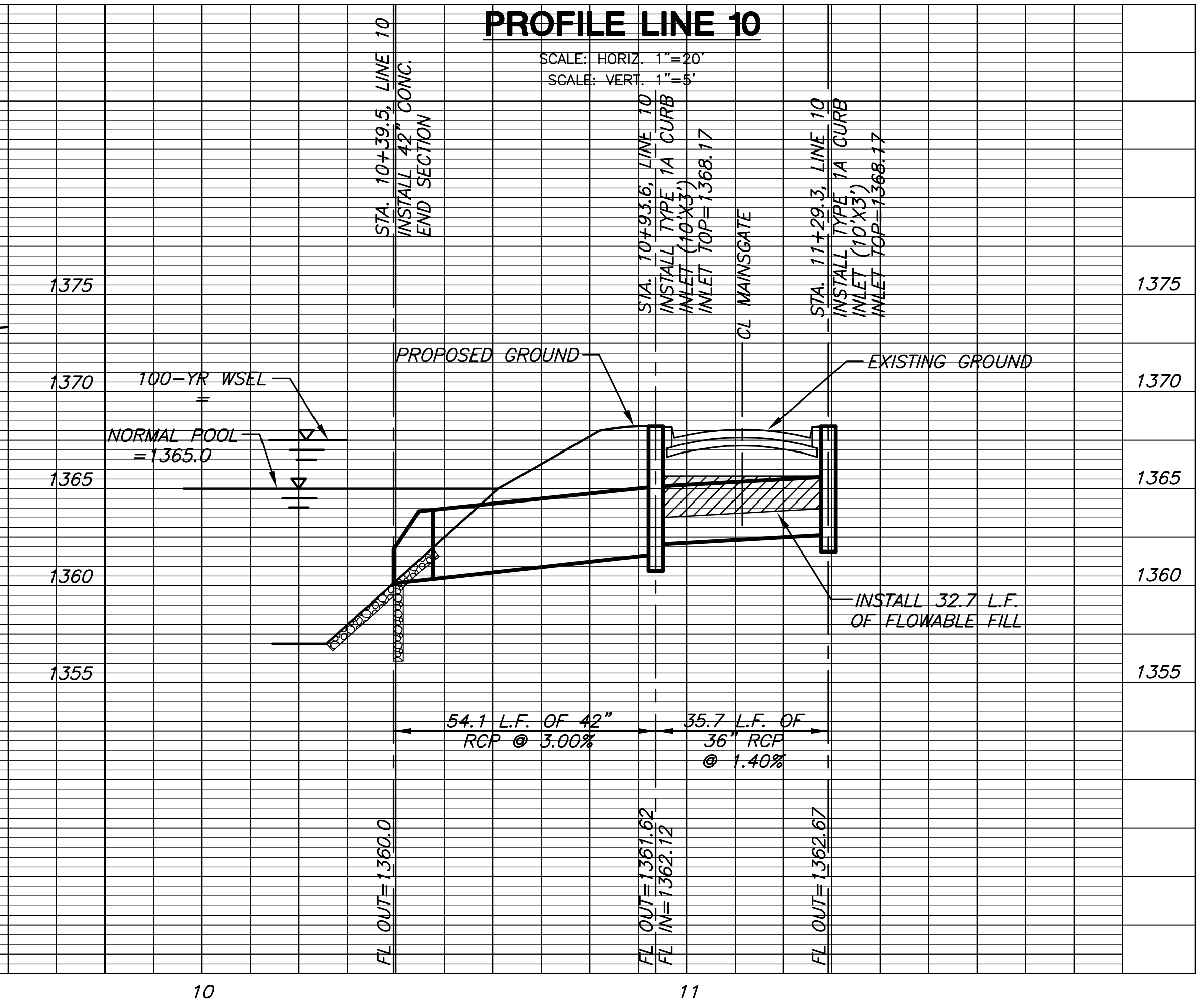
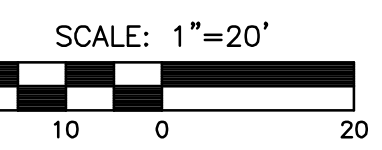
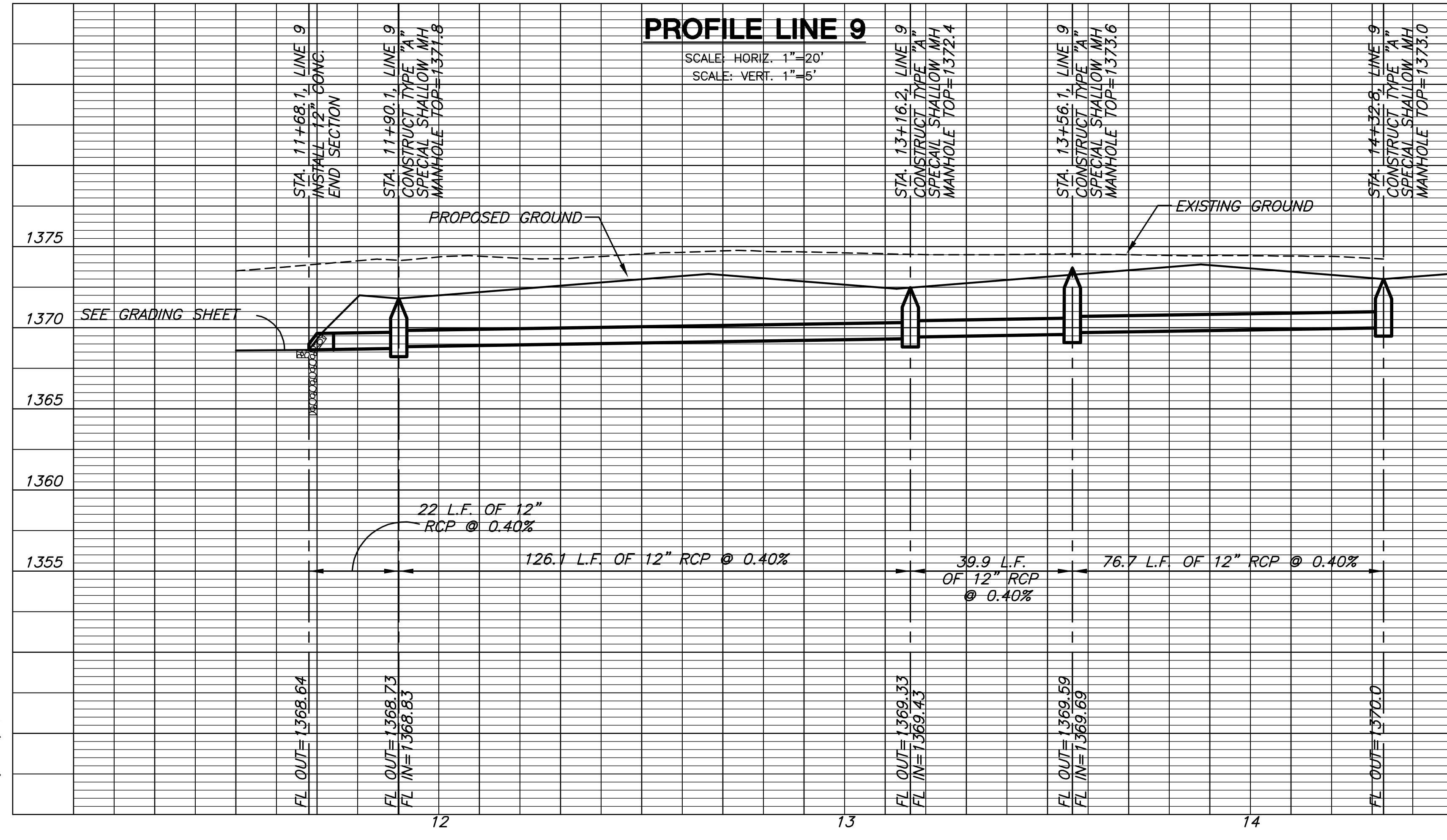
SHEET NO.
14 of 27



NOTE
RIPRAP SHALL BE INSTALLED ACCORDING TO STD SPEC WITH TOE WALLS ON ALL UNPROTECTED EDGES. THE TOE WALL SHOWN ON THE PLANS SHALL BE IN ADDITION TO THE STD SPEC.

PLAN LINE 9

PLAN LINE 10



PLOTTED: Wednesday, February 06, 2008 @ 09:58AM

J:\CIVIL\06201\07165\SWS\PHASE 1\07165D9.DWG