

**STORM WATER DRAIN PLANS**  
**MONARCH LANDING SECOND ADDITION**  
**PHASE 1**

**BUBBLE MAP**  
SHEET TITLE  
468-84434  
PROJECT NUMBER

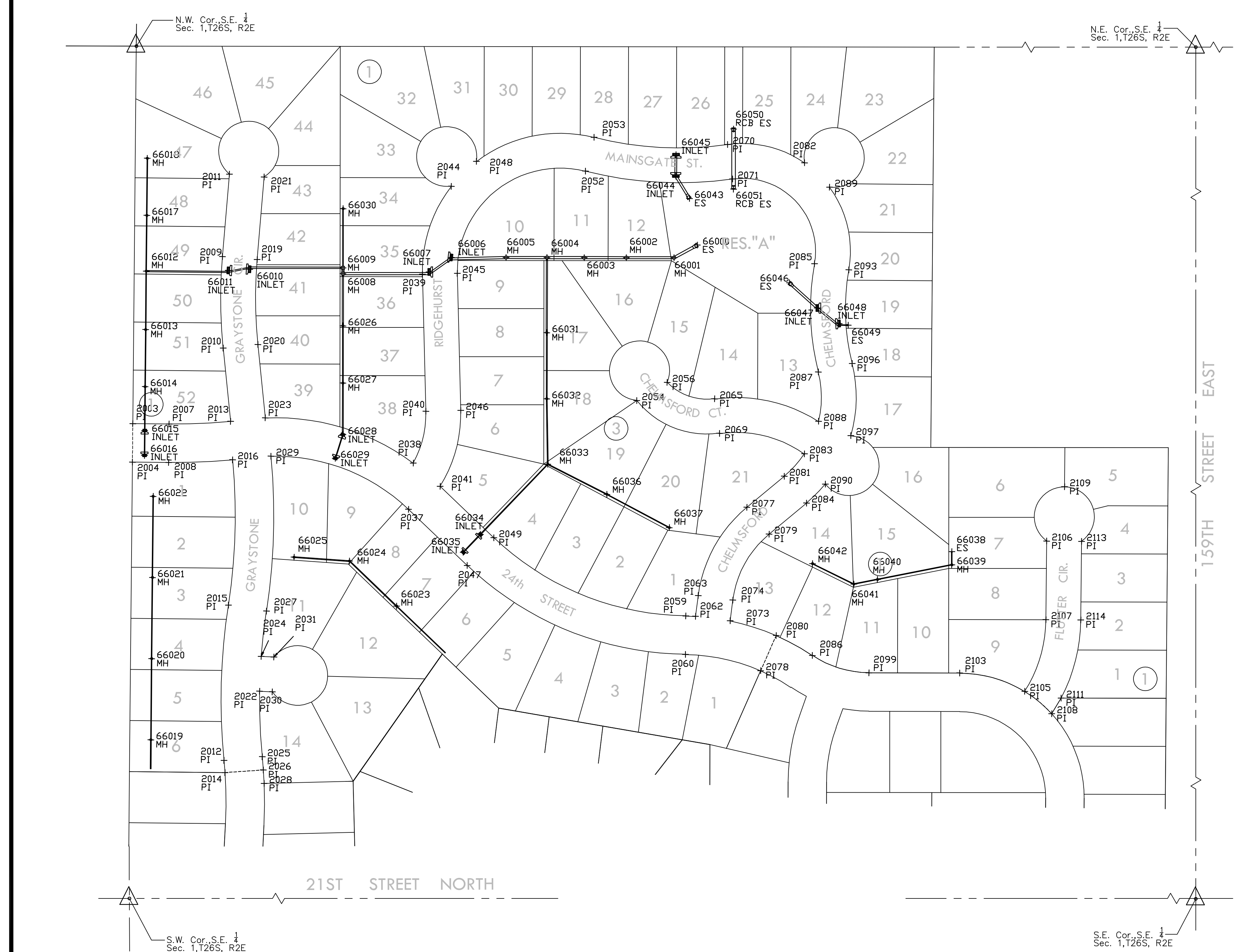
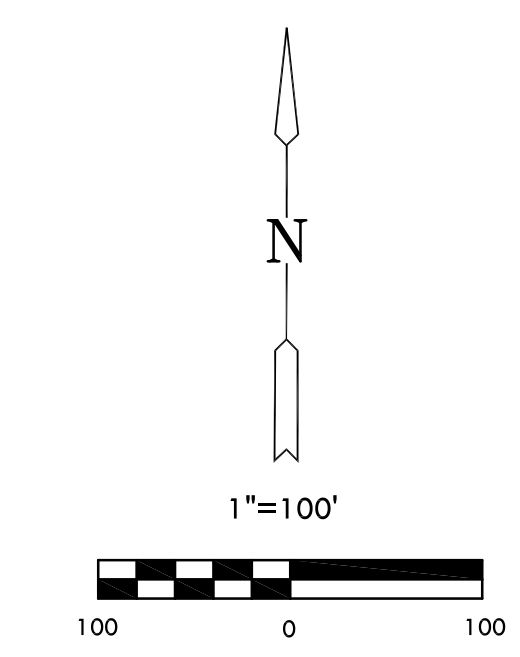
DESIGN BY: **DFL**  
DRAWN BY: **KKL**  
CHECKED BY: **GJA**

ISSUED: **February 2008**  
REVISED:

SHEET NO.  
**21 of 27**

PLAT IRONS			
Point #	Northing	Easting	Desc.
2002	1702697.82	1699442.28	PI
2003	1702069.84	1699448.17	PI
2004	1702005.84	1699448.77	PI
2005	1701490.86	1699453.60	PI
2007	1702070.40	1699508.43	PI
2008	1702006.40	1699509.03	PI
2009	1702350.55	1699592.03	PI
2010	1702198.44	1699598.13	PI
2011	1702487.84	1699600.95	PI
2012	1701512.54	1699610.28	PI
2013	1702078.78	1699610.68	PI
2014	1701492.33	1699612.34	PI
2015	1701770.97	1699612.82	PI
2016	1702012.89	1699615.26	PI
2017	1702574.81	1699619.26	PI
2019	1702348.78	1699649.90	PI
2020	1702205.32	1699653.72	PI
2021	1702484.07	1699658.83	PI
2022	1701628.76	1699667.38	PI
2023	1702083.56	1699668.26	PI
2024	1701686.74	1699668.94	PI
2025	1701519.93	1699673.85	PI
2026	1701497.94	1699678.09	PI
2027	1701762.34	1699678.23	PI
2028	1701475.48	1699677.73	PI
2029	1702020.06	1699678.86	PI
2030	1701628.19	1699688.48	PI
2031	1701681.17	1699690.04	PI
2035	1701655.71	1699779.98	PI
2036	1701481.97	1699825.65	PI
2037	1701936.03	1699909.29	PI
2038	1702013.02	1699915.91	PI
2039	1702327.45	1699925.10	PI
2040	1702099.63	1699935.13	PI
2041	1701975.20	1699981.21	PI
2043	1701698.28	1699989.94	PI
2044	1702474.50	1699970.36	PI
2045	1702330.00	1699983.04	PI
2046	1702102.18	1699993.07	PI
2047	1701844.33	1700008.61	PI
2048	1702516.79	1700011.37	PI
2049	1701891.35	1700052.02	PI
2050	1701808.09	1700065.45	PI
2052	1702503.99	1700192.98	PI
2053	1702560.44	1700206.25	PI
2054	1702123.90	1700285.47	PI
2056	1702155.11	1700335.38	PI
2059	1701767.20	1700373.68	PI
2060	1701703.21	1700374.25	PI
2062	1701767.00	1700389.94	PI
2063	1701801.50	1700393.73	PI
2065	1702129.24	1700414.79	PI
2066	1701554.12	1700417.77	PI
2069	1702072.00	1700424.14	PI
2070	1702552.72	1700428.45	PI
2071	1702495.47	1700437.75	PI
2072	1701548.29	1700445.35	PI
2073	1701760.66	1700447.59	PI
2074	1701795.16	1700451.38	PI
2077	1701949.89	1700471.83	PI
2078	1701678.55	1700498.88	PI
2079	1701905.96	1700509.70	PI
2080	1701737.59	1700524.60	PI
2081	1702002.70	1700533.09	PI
2082	1702524.62	1700556.99	PI
2083	1702040.69	1700565.88	PI
2084	1701958.77	1700570.96	PI
2085	1702357.07	1700576.67	PI
2086	1701705.43	1700585.38	PI
2087	1702177.13	1700588.43	PI
2088	1702095.19	1700588.37	PI
2089	1702484.90	1700599.26	PI
2090	1701990.92	1700601.64	PI
2093	1702347.98	1700633.95	PI
2096	1702192.37	1700642.39	PI
2097	1702072.39	1700642.48	PI
2099	1701678.29	1700679.99	PI
2101	1702721.11	1700768.89	PI
2102	1702055.06	1700775.86	PI
2103	1701680.98	1700830.90	PI
2105	1701652.41	1700939.58	PI
2106	1701903.02	1700971.31	PI
2107	1701772.33	1700972.61	PI
2108	1701816.01	1700985.21	PI
2109	1701994.04	1700999.40	PI
2111	1701642.30	1701000.28	PI
2113	1701903.60	1701029.30	PI
2114	1701772.91	1701030.61	PI
2115	1702062.11	1701174.89	PI
2116	1701645.42	1701174.89	PI

SWS POINTS			
Point #	Northing	Easting	Desc.
66000	1702388.55	1700381.32	ES
66001	1702362.69	1700342.91	MH
66002	1702361.29	1700263.64	MH
66003	1702360.06	1700193.65	MH
66004	1702359.97	1700131.59	MH
66005	1702357.78	1700063.67	MH
66006	1702356.19	1699972.60	INLET
66007	1702331.34	1699936.16	INLET
66008	1702326.00	1699793.01	MH
66009	1702335.57	1699792.84	MH
66010	1702330.35	1699667.67	INLET
66011	1702327.71	1699602.21	INLET
66012	1702321.93	1699465.79	MH
66013	1702226.74	1699466.70	MH
66014	1702313.74	1699461.59	INLET
66015	1702059.67	1699468.28	INLET
66016	1702017.39	1699468.66	INLET
66017	1702416.73	1699464.92	MH
66018	1702511.72	1699464.03	MH
66019	1701544.54	1699461.13	MH
66020	1701679.53	1699466.87	MH
66021	1701814.53	1699468.68	MH
66022	1701949.52	1699464.33	MH
66023	1701724.58	1699462.52	MH
66024	1701849.11	1699462.88	MH
66025	1701852.78	1699462.48	MH
66026	1702238.93	1699464.54	MH
66027	1702143.95	1699466.21	INLET
66028	1702068.13	1699471.71	INLET
66029	1702018.46	1699476.10	INLET
66030	1702433.90	1699479.12	MH
66031	1702233.99	1700133.76	MH
66032	1702124.01	1700135.71	MH
66033	1702015.26	1700139.36	MH
66034	1701896.52	1700029.72	INLET
66035	1701866.15	1700001.69	INLET
66036	1701967.00	1700238.62	MH
66037	1701911.64	1700343.52	MH
66038	1701882.60	1700613.94	ES
66039	1701860.60	1700814.34	MH
66040	1701833.96	1700691.10	MH
66041	1701826.52	1700652.05	MH
66042	1701858.09	1700662.64	MH
66043	1702461.69	1700368.69	ES
66044	1702499.53	1700343.33	INLET
66045	1702534.18	1700342.92	INLET
66046	1702323.41	1700355.60	ES
66047	1702283.51	1700662.64	INLET
66048	1702258.29	1700619.52	INLET
66049	1702256.00	1700634.73	ES
66050	1702579.61	1700437.94	RCB ES
66051	1702478.63	1700439.70	RCB ES



PLOTTED: Wednesday, February 06, 2008 @ 10:58AM

J:\CIVIL\06201\07165\SWS\PHASE 1\BUBBLE.DWG